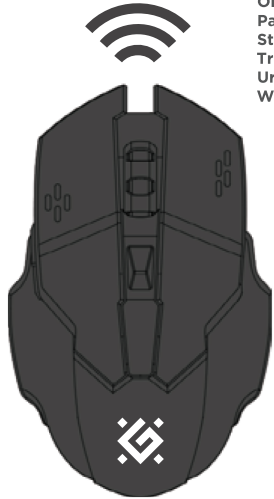
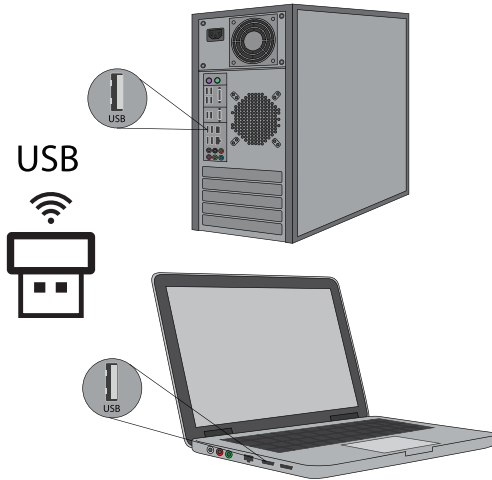
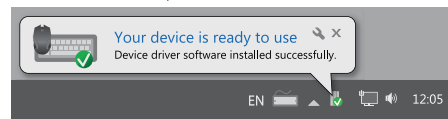
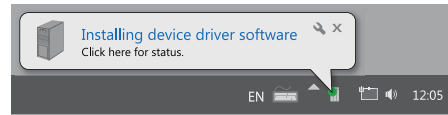
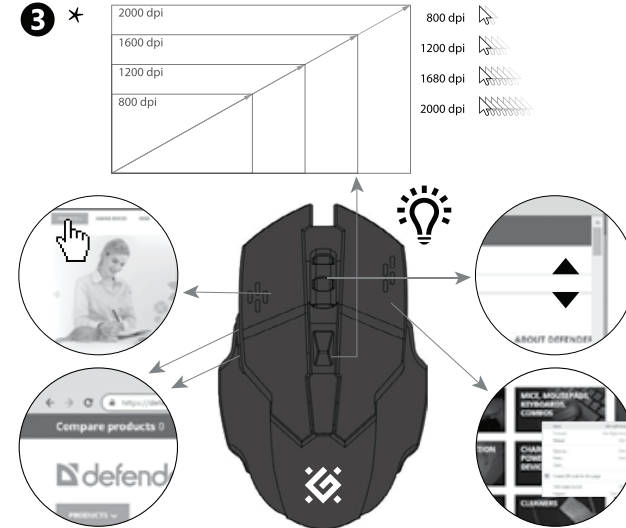


Operation manual

Wireless gaming mouse

Astro Elite GM-056
 Beta GM-707L
 Breakdown GM-905
 Demon GM-534
 Dila MM-282
 Glory GM-514
 Horrodine GM-237
 Ibox GM-895
 Katana GM-511
 Knight GM-885
 Oneshot GM-067
 Pandora GM-502
 Stix GM-009
 Trigger GM-934
 Uran GM-503
 Warlock GM-709L


1

2

3 *


*

ARM	AZE	BEL	CZ	DE
Կախված սկզբնական մոդելից	Siçan modelindən asılı olaraq	У залежності від моделі миші	V závislosti na modelu myši	Abhängig vom Mausmodell
EN	ES	EST	FI	GEO
Depending on the mouse model	Dependiendo del modelo de ratón	Sõltuvalt hiire mudelist	Hiiren mallista riippuen	მავლის მოდელიზეა ამოკიდებული
GRE	HR / CNR	HUN	KAZ	PL
Ανάλογα με το μοντέλο του ποντικιού	Ovisno o modelu miša	Az egér modell-jétől függően	Тінтуір моделіне байланысты	W zależności od modelu myszy
RO	RU	SLV	SVK	SWE
În funcție de modelul mouse-ului	Зависит от модели мыши	Odvisno od modela miške	Podľa modelu myši	Beroende på musmodellen
UKR	UZB			
Залежно від моделі миші	Sichqoncha modeliga qarab			



EN

Wireless gaming mouse OPERATION MANUAL

Declaration of Conformity
 Operation of device (devices) may be affected by strong static, electrical or high-frequency fields (radio installations, mobile telephones, microwaves, electrostatic discharges)/ If occurs, Try increasing the distance from the devices causing the interference.

Disposal of batteries, electrical and electronic equipment
 This sign on the product, its batteries or package indicates that the product cannot be disposed together with domestic waste. It should be delivered to an appropriate batteries, electrical and electronic equipment collecting and recycling company.

- Terms and conditions of safe and efficient use of the product
- Usage precautions:
1. Use the product for its intended purpose only.
 2. Do not disassemble. This product does not contain parts that are entitled to self-sufficient repair. On the question of maintenance and replacement of a failed item apply to a dealer or Defender authorized service center. While receiving the product make sure that it is unbroken and there are no freely moving objects inside the product.
 3. Keep away from children under the age of 3. May contain small parts.
 4. Keep away from humidity. Never immerse the product in liquids.
 5. Keep away from vibrations and mechanical stresses, which can cause mechanical damaging of the product. In case of mechanical damage no warranties are provided.
 6. Do not use in the presence of visual damage. Do not use when the product is obviously defective.
 7. Do not use the product at temperatures below and above recommended temperatures (see the operation manual), under the conditions of humidity evaporation, as well as in hostile environment.
 8. Do not put into the mouth.
 9. Do not use the product for industrial, medical or manufacturing purposes.
 10. In case when shipment of the product was conducted in subzero temperatures, then before operating, the product should be kept in a warm placement (+16-25°C or 60-77°F) within 3 hours.
 11. Turn off the device each time, when it is not planned to use it for extended period of time.
 12. Do not use the device while driving the vehicle, if it is diverted attention, and in other cases when the law obliges you to turn off the device.

Product specifications and features can be found on the packaging and on defender-global.com
 IMPORTER: Defender Technology OÜ, Betooni str 11, 11415, Tallinn, Estonia.
 Manufacturer: Zodic Technology Co., Ltd. Address: B209, Block A and B, Chuangjinyihao, District 28, Dalang Community, Xin'an Street, Bao'an District, Shenzhen, China.

Unlimited shelf life. Service life is 2 years. Date of manufacture: see on the package
 Manufacturer keeps the right to change package contents and specifications indicated in this manual. The latest and detailed operation manual is available at www.defender-global.com
 Made in China.

- Warranty service is not effected in the following situations:
1. Expiration of the warranty period (warranty period is settled from the date of sale to the end user).
 2. Incorrect filling in of the warranty card.
 3. Incorrect plug in to power grid.
 4. Breach to safety of guarantee seals, fixing joint assemblies of the case; presence of elements of opening on outside and inside parts of the product.
 5. If the product designed for household use was used for professional purposes.
 6. Damage due to penetration of foreign objects, substances, liquids or insects inside the product.
 7. Damage due to breach to normal work of supply network – 220V +/- 10%. (except of automatic voltage regulators)
 8. If the product was opened and repaired by a person unauthorized for that by the dealer.
 9. Incorrect operation or careless handling.
 10. Damage to the product due to natural disasters.
 11. Presence of elements indicating mechanical damage (fall, hit).
 12. Disability of connected devices of other producers.

