



# CARPETS 2024



## CONTENT / SADRŽAJ

---

### TUFTED CARPETS / TAFTOVANI TEPISONI

|           |    |
|-----------|----|
| PRIME     | 7  |
| DIVA      | 9  |
| MODENA    | 11 |
| SENSATION | 13 |
| DRAGON    | 15 |
| CAPRI     | 17 |
| LAGO      | 19 |
| MIX       | 21 |
| STONE     | 23 |
| FROZEN    | 25 |
| PORT      | 27 |
| INDIGO    | 29 |
| PANORAMA  | 31 |

### NEEDLEPUNCHED CARPETS /

|            |    |
|------------|----|
| COMB URB   | 35 |
| FAVORIT    | 37 |
| LIDER URB  | 39 |
| ENERGY URB | 41 |
| WAY URB    | 43 |
| REKORD URB | 45 |

|                    |    |
|--------------------|----|
| SINTELON STAZE URB | 47 |
| ARENA NEW          | 49 |
| ENTER URB          | 51 |
| MERIDIAN URB       | 53 |
| GLOBAL URB         | 55 |
| EKVATOR URB        | 57 |
| EKONOMIK PLUS      | 59 |

### RESIDENTIAL GRASS / REZIDENCIJALNA TRAVA

|            |    |
|------------|----|
| GLADE      | 63 |
| FIELD      | 65 |
| PRADO      | 67 |
| CAMPO      | 69 |
| GREENFIELD | 71 |
| GREENLAND  | 73 |

|                             |    |
|-----------------------------|----|
| INSTALLATION / POSTAVLJANJE | 75 |
| MAINTENANCE / ODRŽAVANJE    | 87 |

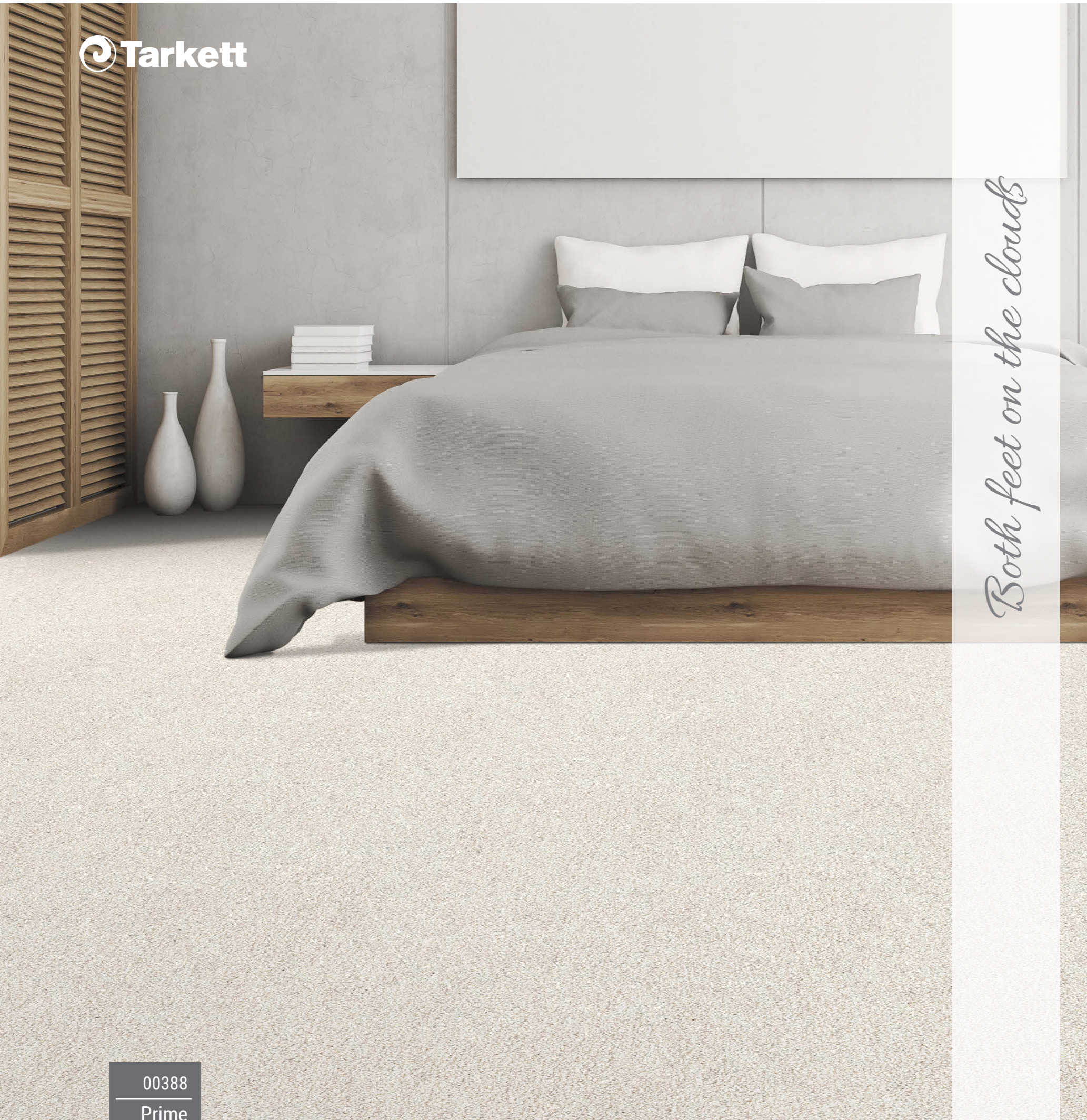
\*The colors of products might be different from the original. Tarkett reserves the right to change technical specifications of products in accordance with standard EN 1307.

\*Boje proizvoda mogu odudarati od originalnih. Tarkett zadržava pravo da izmeni tehničke karakteristike proizvoda u skladu sa standardom EN 1307.



**TUFTED** CARPETS

---



*Both feet on the clouds*

# PRIME

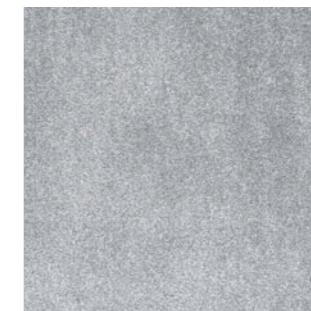
collection



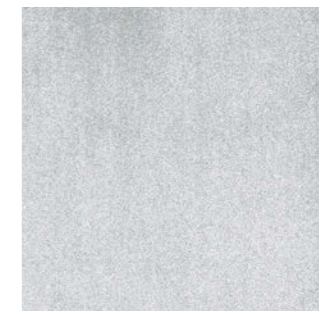
00388



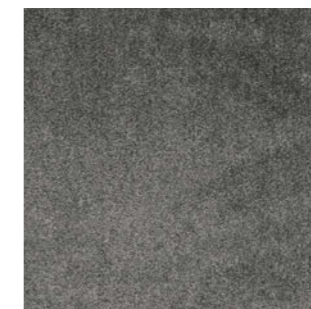
10588



33788




33188



36888



80588

|                                    |   |
|------------------------------------|---|
| Pile material / Sastav flora:      | 100% PP   |
| Backing / Poledinska dorada:       |  |
| Total thickness / Ukupna debljina: | 12 mm   |
| Total weight / Ukupna težina:      | 1900 g/m <sup>2</sup>   |
| Width / Širina:                    | 2/4 m   |



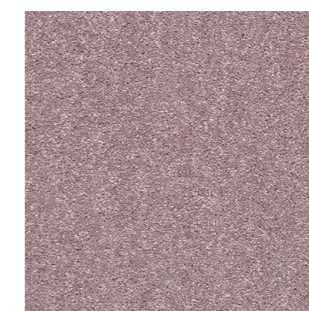
00388  
Prime

# DIVA

collection



80981



77081




44681



34381



77081  
Diva

|                                    |   |
|------------------------------------|---|
| Pile material / Sastav flora:      | 100% PP   |
| Backing / Poledinska dorada:       |  |
| Total thickness / Ukupna debljina: | 15 mm   |
| Total weight / Ukupna težina:      | 2150 g/m <sup>2</sup>   |
| Width / Širina:                    | 4 m   |



# MODENA

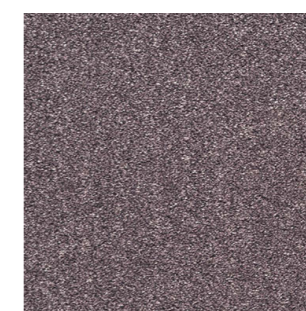
collection



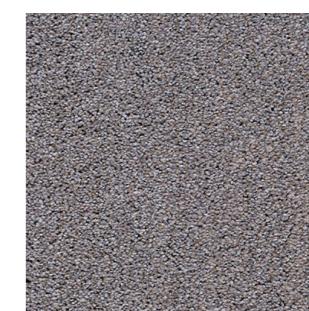
00067



33267



47667



38367




80467



83067



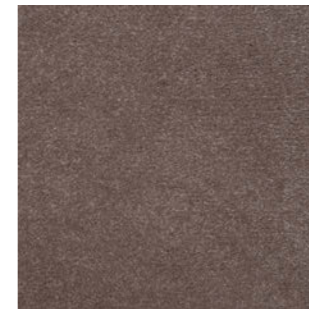
Pile material / Sastav flora: 100% PP  
 Backing / Poledinska dorada:   
 Total thickness / Ukupna debljina: 15 mm  
 Total weight / Ukupna težina: 2150 g/m<sup>2</sup>  
 Width / Širina: 4 m



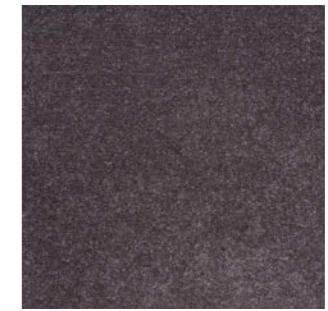
00067  
 Modena

# SENSATION

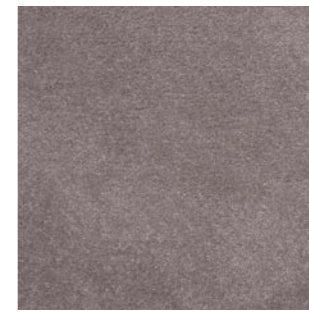
collection



11285



16585



83385




89085



89585



|                                    |   |
|------------------------------------|---|
| Pile material / Sastav flora:      | 100% PP   |
| Backing / Poledinska dorada:       |  |
| Total thickness / Ukupna debljina: | 12 mm   |
| Total weight / Ukupna težina:      | 2000 g/m <sup>2</sup>   |
| Width / Širina:                    | 4 m   |



# DRAGON

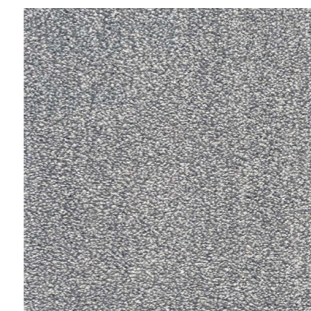
collection



10231



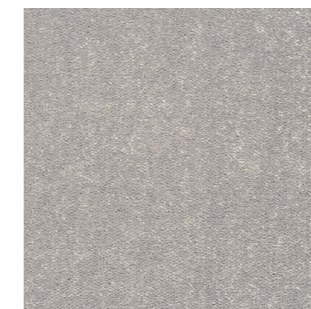
10431



33631



31431



30331



|                                    |                       |
|------------------------------------|-----------------------|
| Pile material / Sastav flora:      | 100% PP               |
| Backing / Poledinska dorada:       | termo                 |
| Total thickness / Ukupna debljina: | 10,5 mm               |
| Total weight / Ukupna težina:      | 1650 g/m <sup>2</sup> |
| Width / Širina:                    | 3 m / 4 m             |



10231  
Dragon





# CAPRI

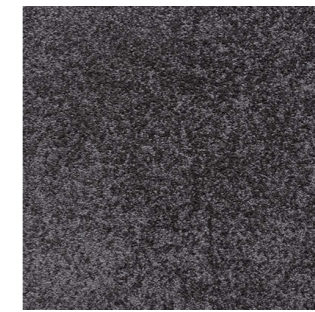
collection



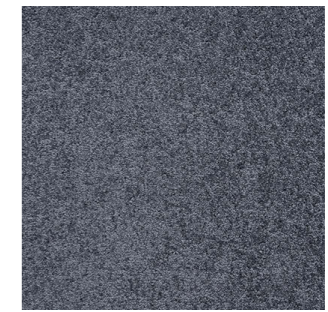
27583



34183



34883



43583



87183



89083

|                                    |                       |
|------------------------------------|-----------------------|
| Pile material / Sastav flora:      | 100% PP               |
| Backing / Poledinska dorada:       | termo                 |
| Total thickness / Ukupna debljina: | 9 mm                  |
| Total weight / Ukupna težina:      | 1550 g/m <sup>2</sup> |
| Width / Širina:                    | 4 m                   |

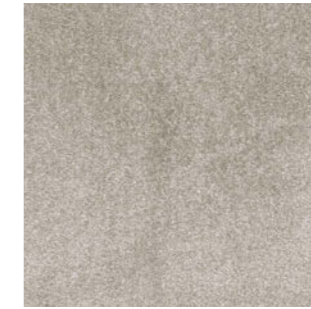


89083  
Capri

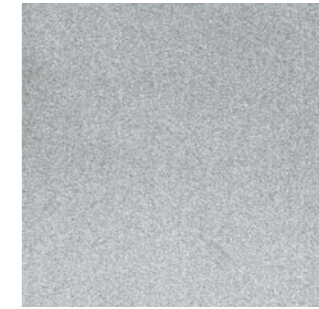


# LAGO

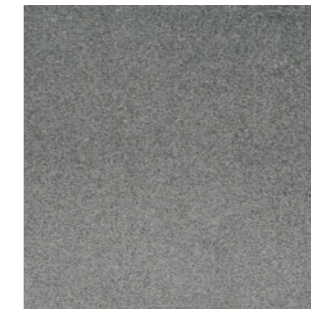
collection



10589



33789



36889



80589

*Pleasure and comfort in your space*

|                                    |                       |
|------------------------------------|-----------------------|
| Pile material / Sastav flora:      | 100% PP               |
| Backing / Poledinska dorada:       |                       |
| Total thickness / Ukupna debljina: | 8 mm                  |
| Total weight / Ukupna težina:      | 1400 g/m <sup>2</sup> |
| Width / Širina:                    | 4 m                   |



10589  
Lago

# MIX

collection




33069



93369



|                                    |   |
|------------------------------------|---|
| Pile material / Sastav flora:      | 100% PP   |
| Backing / Poledinska dorada:       |  |
| Total thickness / Ukupna debljina: | 9 mm  |
| Total weight / Ukupna težina:      | 1450 g/m <sup>2</sup>   |
| Width / Širina:                    | 4 m   |



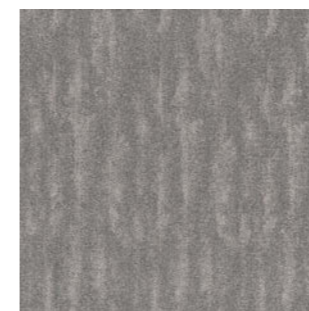
93369  
Mix



Modern design for true makeover

# STONE

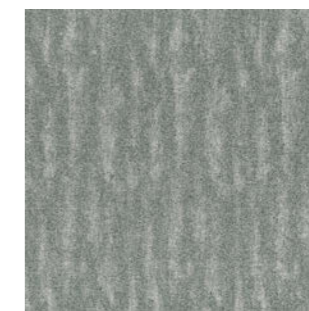
collection



13590



19590



38790



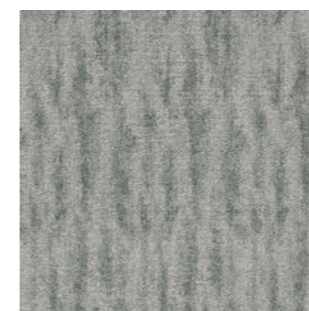
80490



83090




83290



83390



98590

Pile material / Sastav flora: 100% PP  
 Backing / Poledinska dorada:   
 Total thickness / Ukupna debljina: 7,5 mm  
 Total weight / Ukupna težina: 1200 g/m<sup>2</sup>  
 Width / Širina: 3 m / 4 m



80490  
Stone



*Good acoustic and thermal insulation*

# FROZEN

collection



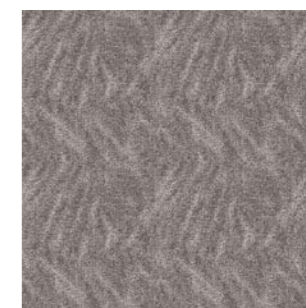
13591




83291



38791



83391

|                                    |   |
|------------------------------------|---|
| Pile material / Sastav flora:      | 100% PP   |
| Backing / Poledinska dorada:       |  |
| Total thickness / Ukupna debljina: | 7,5 mm  |
| Total weight / Ukupna težina:      | 1200 g/m <sup>2</sup>   |
| Width / Širina:                    | 3 m / 4 m   |



13591  
Frozen



# PORT

collection



11344



21844



36744



38544



39144




53444



81344



93244

|                                    |   |
|------------------------------------|---|
| Pile material / Sastav flora:      | 100% PP   |
| Backing / Poledinska dorada:       |  |
| Total thickness / Ukupna debljina: | 8 mm  |
| Total weight / Ukupna težina:      | 1510 g/m <sup>2</sup>   |
| Width / Širina:                    | 3 m / 4 m   |



93244  
Port



# INDIGO

collection




11484



34684



31284

|                                    |   |
|------------------------------------|---|
| Pile material / Sastav flora:      | 100% PP   |
| Backing / Poledinska dorada:       |  |
| Total thickness / Ukupna debljina: | 8 mm  |
| Total weight / Ukupna težina:      | 1510 g/m <sup>2</sup>   |
| Width / Širina:                    | 4 m   |



EN 14041  
EN 13501-1

34684  
Indigo



# PANORAMA

collection



17446



22046



31746

|                                    |                       |
|------------------------------------|-----------------------|
| Pile material / Sastav flora:      | 100% PP               |
| Backing / Poledinska dorada:       | termo                 |
| Total thickness / Ukupna debljina: | 7 mm                  |
| Total weight / Ukupna težina:      | 1510 g/m <sup>2</sup> |
| Width / Širina:                    | 4 m                   |



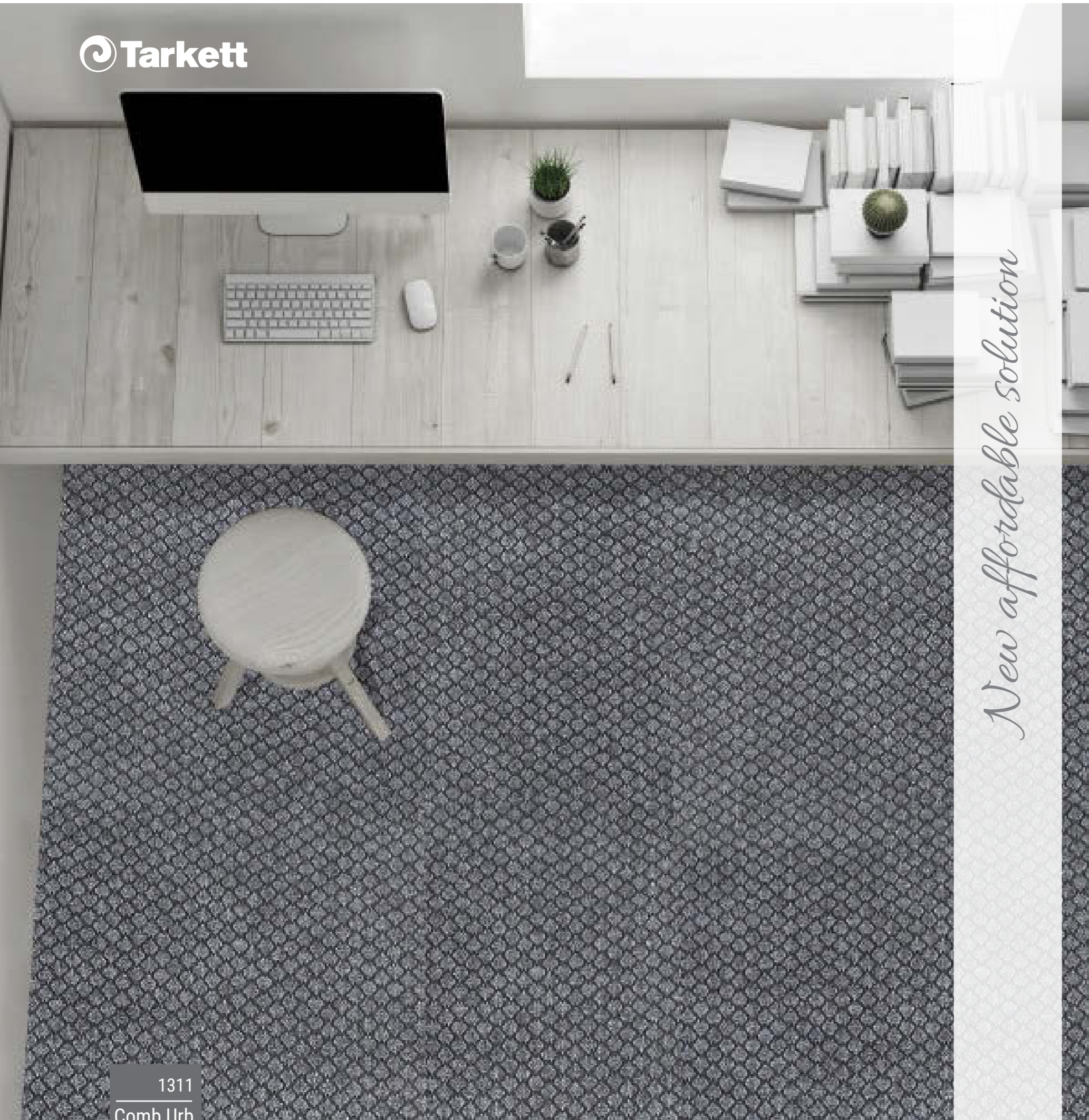
31746  
Panorama





**NEEDLEPUNCHED**  
CARPETS

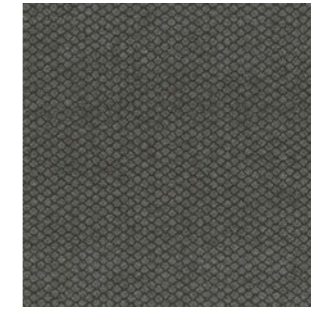
---



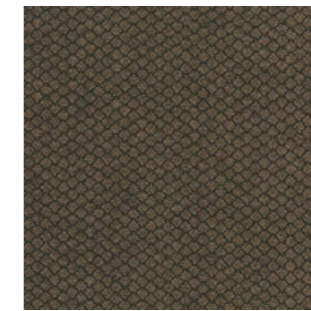
*New affordable solution*

# COMB URB

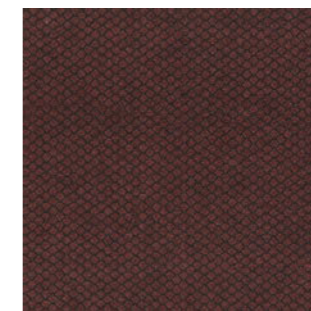
collection




1302



1311



1312

|                                    |   |
|------------------------------------|---|
| Pile material / Sastav flora:      | 100% PP   |
| Backing / Poledinska dorada:       |  |
| Total thickness / Ukupna debljina: | 7,5 mm  |
| Total weight / Ukupna težina:      | 1550 g/m <sup>2</sup>   |
| Width / Širina:                    | 2 m / 4 m   |



1311  
Comb Urb

synsintelon

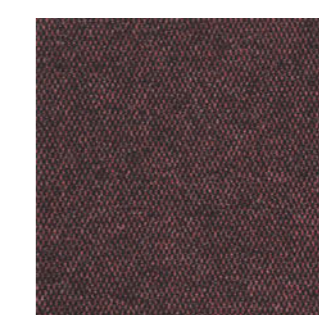


# FAVORIT/ FAVORIT URB

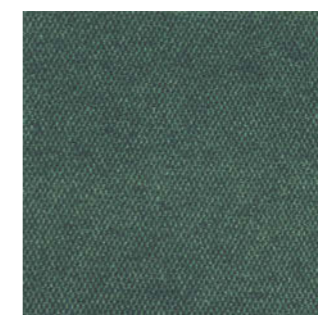
collection



1211



1212



1204



1213



1202

|                                    |                              |
|------------------------------------|------------------------------|
| Pile material / Sastav flora:      | 100% PP                      |
| Backing / Poledinska dorada:       | LATEX COMPOUND / URB         |
| Total thickness / Ukupna debljina: | 7,5 / 8,5 mm                 |
| Total weight / Ukupna težina:      | 1450 / 1750 g/m <sup>2</sup> |
| Width / Širina:                    | 4 m                          |



1211  
Favorit

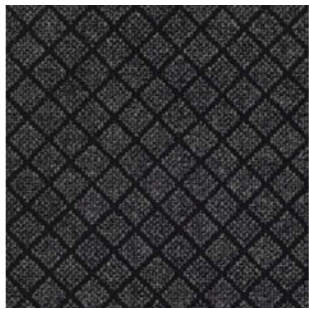


# LIDER URB

collection



1411



1402

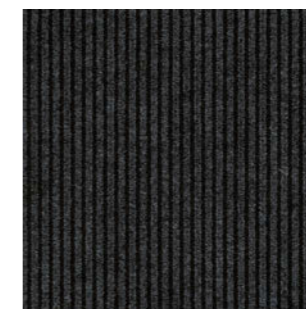
|                                    |                       |
|------------------------------------|-----------------------|
| Pile material / Sastav flora:      | 100% PP               |
| Backing / Poledinska dorada:       | URB                   |
| Total thickness / Ukupna debljina: | 8,5 mm                |
| Total weight / Ukupna težina:      | 1750 g/m <sup>2</sup> |
| Width / Širina:                    | 4 m                   |



1402  
Lider URB

# ENERGY URB

collection



902



919



966

|                                    |                       |
|------------------------------------|-----------------------|
| Pile material / Sastav flora:      | 100% PP               |
| Backing / Poledinska dorada:       | URB                   |
| Total thickness / Ukupna debljina: | 7,5 mm                |
| Total weight / Ukupna težina:      | 1550 g/m <sup>2</sup> |
| Width / Širina:                    | 1 m / 2 m             |



902  
Energy  
URB



*With excellent touch*

# WAY URB

collection



402



411



412

|                                    |                       |
|------------------------------------|-----------------------|
| Pile material / Sastav flora:      | 100% PP               |
| Backing / Poledinska dorada:       | termo                 |
| Total thickness / Ukupna debljina: | 7,5 mm                |
| Total weight / Ukupna težina:      | 1550 g/m <sup>2</sup> |
| Width / Širina:                    | 0.8 m / 1 m / 1,20 m  |

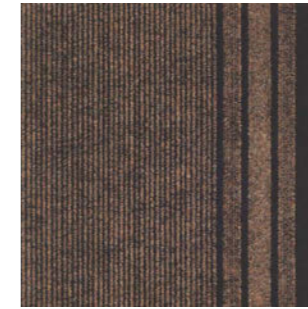


412  
Way Urb

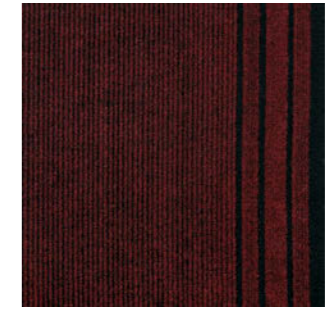


# REKORD URB

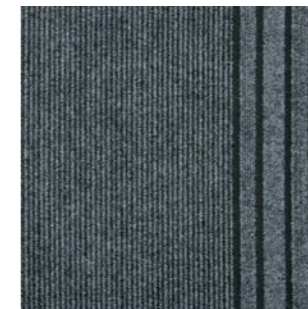
collection



811



877



802



866

|                                    |                       |
|------------------------------------|-----------------------|
| Pile material / Sastav flora:      | 100% PP               |
| Backing / Poleđinska dorada:       | URB                   |
| Total thickness / Ukupna debljina: | 8,5 mm                |
| Total weight / Ukupna težina:      | 1750 g/m <sup>2</sup> |
| Width / Širina:                    | 0,8 m / 1 m / 2 m     |



811  
Rekord  
Urb

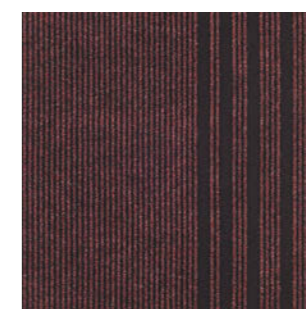


# SINTELON STAZE URB

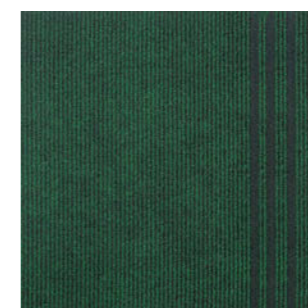
collection



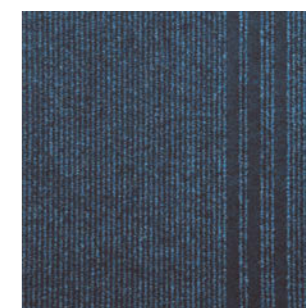
711



712



759



713



702



713

|                                    |                       |
|------------------------------------|-----------------------|
| Pile material / Sastav flora:      | 100% PP               |
| Backing / Poledinska dorada:       | URB                   |
| Total thickness / Ukupna debljina: | 8,5 mm                |
| Total weight / Ukupna težina:      | 1750 g/m <sup>2</sup> |
| Width / Širina:                    | 0,8 m / 1 m / 2 m     |







# ARENA NEW

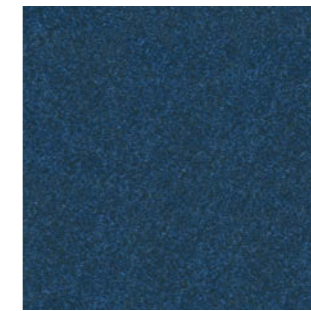
collection



18550



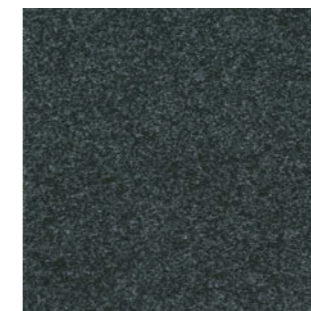
33450



46750



55650



66850



76750

|                                    |                       |
|------------------------------------|-----------------------|
| Pile material / Sastav flora:      | 100% PP UV            |
| Backing / Poledinska dorada:       | LATEX COMPOUND        |
| Total thickness / Ukupna debljina: | 9,5 mm                |
| Total weight / Ukupna težina:      | 1250 g/m <sup>2</sup> |
| Width / Širina:                    | 4 m                   |



33450  
Arena  
NEW



# ENTER URB

collection



33410



66810



52510

|                                    |                       |
|------------------------------------|-----------------------|
| Pile material / Sastav flora:      | 100% PP               |
| Backing / Poledinska dorada:       | URB                   |
| Total thickness / Ukupna debljina: | 6 mm                  |
| Total weight / Ukupna težina:      | 1200 g/m <sup>2</sup> |
| Width / Širina:                    | 4 m                   |



33410  
Enter  
URB

# MERIDIAN URB

collection



1115



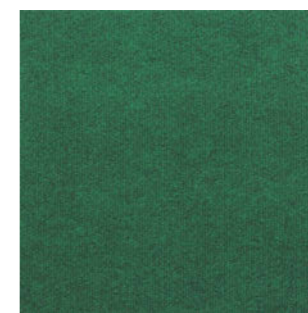
1127



1135



1144



1166



1175



1197

|                                    |                       |
|------------------------------------|-----------------------|
| Pile material / Sastav flora:      | 100% PP               |
| Backing / Poledinska dorada:       | URB                   |
| Total thickness / Ukupna debljina: | 5 mm                  |
| Total weight / Ukupna težina:      | 1310 g/m <sup>2</sup> |
| Width / Širina:                    | 3 m / 4 m             |





# GLOBAL URB

collection



33411



44811



66811

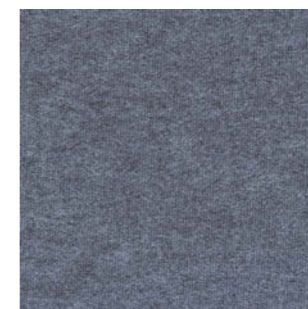
|                                    |                       |
|------------------------------------|-----------------------|
| Pile material / Sastav flora:      | 100% PP               |
| Backing / Poledinska dorada:       | URB                   |
| Total thickness / Ukupna debljina: | 5 mm                  |
| Total weight / Ukupna težina:      | 1200 g/m <sup>2</sup> |
| Width / Širina:                    | 3 m / 4 m             |



44811  
Global  
URB

# EKVATOR URB

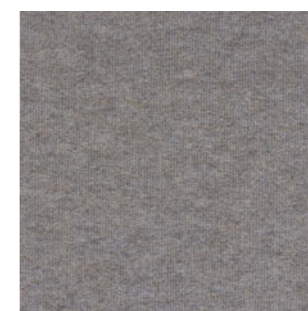
collection



33753



63753



89453



|                                    |                       |
|------------------------------------|-----------------------|
| Pile material / Sastav flora:      | 100% PP               |
| Backing / Poledinska dorada:       | URB                   |
| Total thickness / Ukupna debljina: | 4,5 mm                |
| Total weight / Ukupna težina:      | 1090 g/m <sup>2</sup> |
| Width / Širina:                    | 3 m / 4 m             |



33753  
Ekvator  
URB



# EKONOMIK PLUS

collection



176EP



445EP



776EP



2162

|                                    |                      |
|------------------------------------|----------------------|
| Pile material / Sastav flora:      | 100% PP              |
| Backing / Poledinska dorada:       | LATEX COMPUND        |
| Total thickness / Ukupna debljina: | 3,5 mm               |
| Total weight / Ukupna težina:      | 860 g/m <sup>2</sup> |
| Width / Širina:                    | 4 m                  |





**Grass**

*...inspired by nature*



*Touch of nature*

# GLADE

outdoor collection



Glade



|                               |                       |
|-------------------------------|-----------------------|
| Pile material /Sastav flora:  | 50% PE 50%PP          |
| Backing / Poledinska dorada:  | LATEX COMPAUND        |
| Pile height / Visina flora:   | 35 mm                 |
| Total weight / Ukupna težina: | 1650 g/m <sup>2</sup> |
| Width / Širina:               | 4 m                   |
| UV Stabilnost / UV Stability: | >5000 h UV-A          |





*Unique by its appearance & touch*

# FIELD

outdoor collection



Field



|                               |                |
|-------------------------------|----------------|
| Pile material / Sastav flora: | 50% PE 50%PP   |
| Backing / Poledinska dorada:  | LATEX COMPAUND |
| Pile height / Visina flora:   | 17 mm          |
| Total weight / Ukupna težina: | 1200 g/m2      |
| Width / Širina:               | 2 m / 4 m      |
| UV Stabilnost / UV Stability: | >5000 h UV-A   |





# PRADO

outdoor collection



Prado



|                               |                |
|-------------------------------|----------------|
| Pile material / Sastav flora: | 55%PE 45%PP    |
| Backing / Poledinska dorada:  | LATEX COMPAUND |
| Pile height / Visina flora:   | 17 mm          |
| Total weight / Ukupna težina: | 1350 g/m2      |
| Width / Širina:               | 2m / 4 m       |
| UV Stabilnost / UV Stability: | >5000 h UV-A   |





*Unique by its appearance & touch*

# CAMPO

outdoor collection



Campo

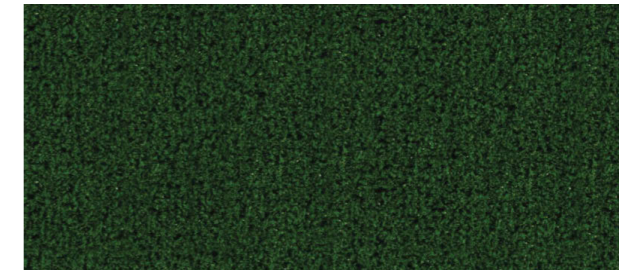


|                               |                |
|-------------------------------|----------------|
| Pile material / Sastav flora: | 50% PE 50% PP  |
| Backing / Poledinska dorada:  | LATEX COMPAUND |
| Pile height / Visina flora:   | 17 mm          |
| Total weight / Ukupna težina: | 1050 g/m2      |
| Width / Širina:               | 4 m            |
| UV Stabilnost / UV Stability: | >5000 h UV-A   |



# GREENFIELD

outdoor collection

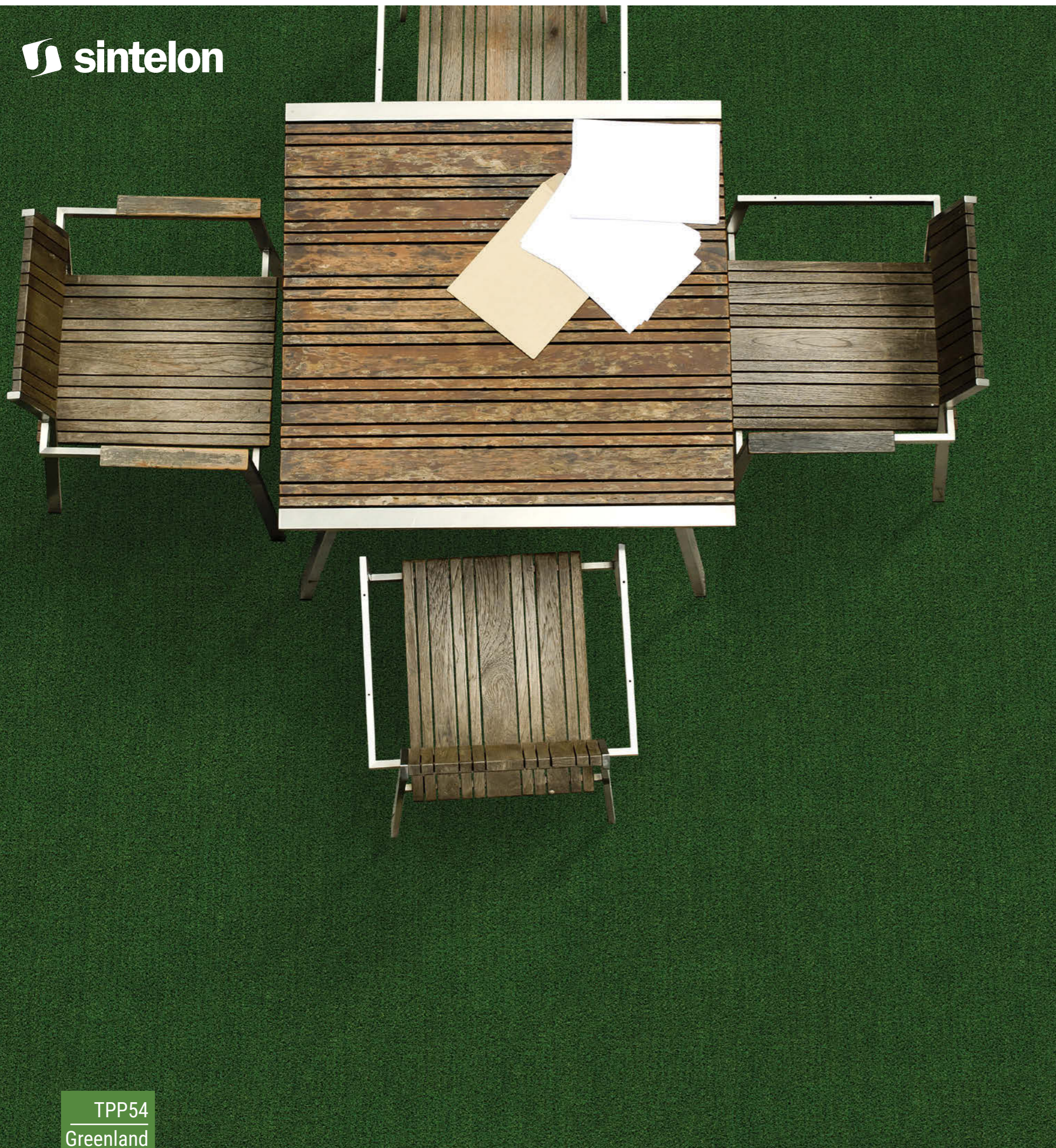


TPP53



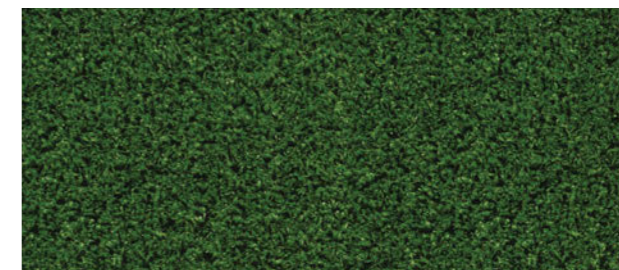
|                               |                      |
|-------------------------------|----------------------|
| Pile material / Sastav flora: | 100%PP UV            |
| Backing / Poledinska dorada:  | LATEX COMPAUND       |
| Pile height / Visina flora:   | 6 mm                 |
| Total weight / Ukupna težina: | 920 g/m <sup>2</sup> |
| Width / Širina:               | 2 m / 4 m            |





# GREENLAND

outdoor collection



TPP54



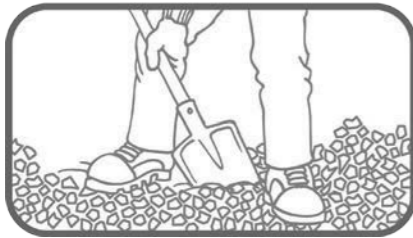
|                               |                      |
|-------------------------------|----------------------|
| Pile material / Sastav flora: | 100% PP UV           |
| Backing / Poledninska dorada: | LATEX COMPAUND       |
| Pile height / Visina flora:   | 5 mm                 |
| Total weight / Ukupna težina: | 750 g/m <sup>2</sup> |
| Width / Širina:               | 2 m / 4 m            |



TPP54  
Greenland

# INSTALLATION

# POSTAVLJANJE



## Removing the lawn Uklanjanje travnjaka

EN

Remove the existing material (any vegetation, tree roots, fertiliser and large stones) before flattening the base. The electrical wiring and sprinkling lines must be placed just beneath the surface intended for the artificial turf. Before the beginning of the process, check whether sprinkling lines and electrical wiring work.

SR

Pre poravnavanja baze potrebno je ukloniti sav postojeći materijal (svu vegetaciju, korenje, đubrivo, veliko kamenje). Električne instalacije i prskalice moraju biti postavljene malo ispod površine planiranog mesta za veštačku travu. Pre početka radova proveriti da li prskalice i električne instalacije rade.



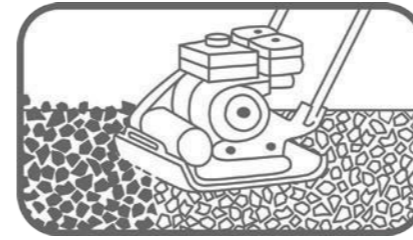
## Laying the base Postavljanje baze

EN

Laying the base correctly is crucial for the turf stability. 7.50/20.50cm layer of crushed stone must cover the whole area uniformly, with the usage of 1m<sup>3</sup> of gravel for 30.52m<sup>2</sup> of the artificial turf (providing that between 7.50 and 10cm of vegetation is removed).

SR

Ključno za stabilnost veštačke trave je pravilno postavljanje podloge. Od 7.50 do 20.50 cm zdrobljenog kamena mora jednako pokriti celo područje, pri čemu je pravilo da se 1m<sup>3</sup> šljunka koristi za 30.52m<sup>2</sup> veštačke trave (ukoliko je između 7.50 i 10cm biljnog tla pomeren).



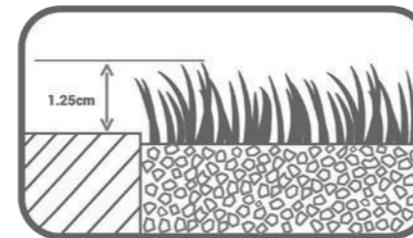
## Flattening the base Ravnanje baze

EN

Slightly dampen the base and flatten the base material using a roller or a plate compactor. Do this until reaching compaction of minimum 90%. After it dries out, the base must be hard and smooth.

SR

Nakvasiti podlogu i pomoću valjka ili vibro ploče izravnati materijal za bazu, sve dok se ne postigne kompaktnost od minimum 90%. Nakon što se osuši, podloga mora biti tvrda i bez brazdi.



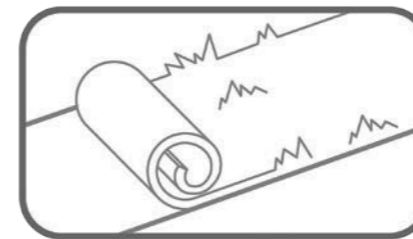
## Finished base Postavljena baza

EN

It is important that the upper part of the artificial turf is 1.25cm above hard surface. It is not mandatory that the project area is completely flat – it can have slight slopes. It is advisable to previously use geotextile weed killer for the base. If it is needed, place decking or treated wood along the sides of an area planned for the artificial turf.

SR

Važno je da gornji deo veštačke trave bude 1.25cm iznad tvrde površine. Planirano područje može imati i nagibe, ne mora biti potpuno ravno. Savetuje se da se baza prethodno ispraska sredstvom protiv pesticida. Ukoliko je potrebno, na obode prostora predviđenog za veštačku travu staviti brodski pod ili obrađeno drvo.



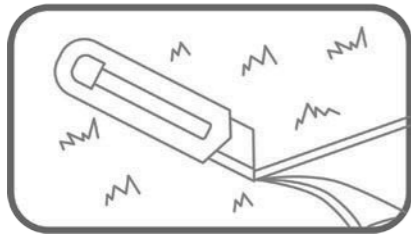
## Laying the artificial turf Postavljanje veštačke trave

EN

Unroll the artificial turf and make sure that each roll is in the same direction. If there are slopes on it, just spread them on a flat surface facing the sun. It is recommended to leave the artificial turf spread on the base between 24 and 48 hours.

SR

Odmotati veštačku travu tako da svaka rolna bude okrenuta u istom pravcu. Ukoliko ima brazdi, neophodno je da rolne budu raširene na ravnoj površini i na suncu. Preporučljivo je da veštačka trava bude raširena na podlogu od 24 do 48 sati.



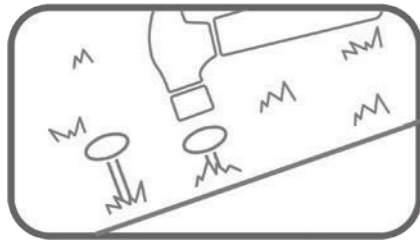
## Cutting the turf to adapt it to the project area Sečenje i uklapanje veštačke trave

EN

Cut the artificial turf on the underside so that its dimensions fit in the area where it will be placed. Prior to fastening and gluing, the whole artificial turf must be cut.

SR

Veštačku travu secite sa poledinske strane tako da dimenzije odgovaraju prostoru na koji će se postaviti. Pre pričvrćivanja i lepljenja, veštačka trava se mora cela iseći.



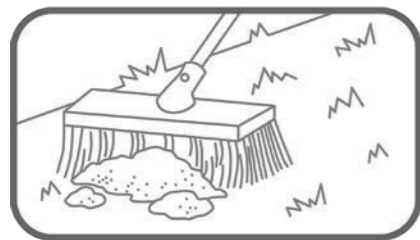
## Attaching the artificial turf to the edges Pričvršćivanje krajeva veštačke trave

EN

Using weather resistant glue join two sections of the artificial turf so that it looks like a single piece of the artificial turf. Fasten the artificial turf at the seams with 15 or 17cm earth staples. Leave the artificial turf for 48 hours in order to see whether any shrinkage of the material occurs before nailing the artificial turf. Place the stakes at every 30cm of the artificial turf and leave an additional safety margin of 3cm of the material on every edge. Turn on the sprinkling system and electrical wiring in order to check whether they function.

SR

Lepkom za sve vremenske uslove spojiti dve rolne veštačke trave da izgledaju kao celina. Pričvrstiti travu po ivicama koristeći eksere za zemlju dužine od 15 do 17cm. Pre zakucavanja ostaviti travu da leži do 48h zbog mogućeg skupljanja materijala. Postaviti kočice na svakih 30cm i na krajevima ostaviti 3cm materijala više nego što je potrebno. Uključiti prskalice i proveriti da li rade i one i električne instalacije.



## Filling the artificial turf with sand and rubber Punjenje veštačke trave peskom i gumom

EN

The silica sand materials used for filling serve as protection and maintenance of the artificial turf structure. In order to spread the material uniformly, it is important not to place large quantities of the material at once. Don't place the filling material before the artificial turf dries out.

SR

Materijali od silikonskog peska koji se koriste za punjenje, služe za zaštitu i održavanje strukture veštačke trave. Da bi se materijal koji se koristi za punjenje ravnomerno rasporedio, važno je da se na travu ne stavljaju odjednom velike količine materijala. Ne stavljati materijal za punjenje dok je veštačka trava vlažna.



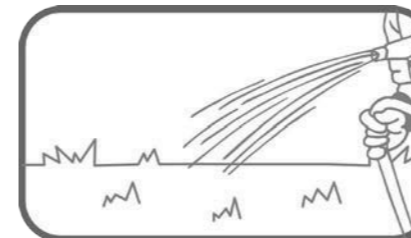
## Spreading the filler Raspoređivanje punjenja

EN

Place the filling material in the spreader (such as the one used to sow grass seeds, spread fertiliser and lime) and set the dispensing gauge to 5 or Medium. Always use sand first. Between each filling material layer brush the synthetic turf pile vertically using hard industrial bristle or power broom. Continue brushing it until the height of the artificial turf reaches 2cm and its tops 1.25cm.

SR

Staviti materijal za punjenje na rasipač (poput onih za sejanje semena trave) i podesiti merač doziranja na 5 ili srednje. Uvek prvo koristiti pesak. Između svakog sloja materijala vertikalno očetkati sintetičku travu koristeći tvrdi industrijsku četku ili električnu metlu. Četkati sve dok visina trave ne bude 2cm, a visina njegovih vrhova 1.25cm.



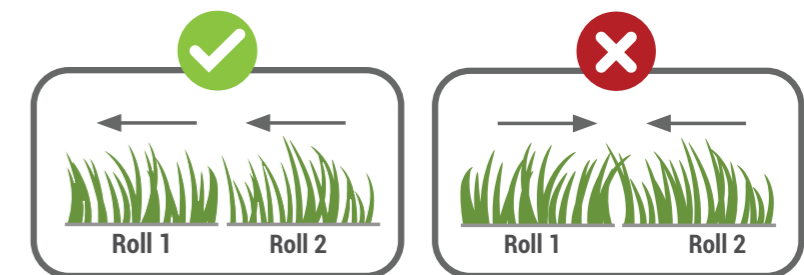
EN

Water the whole area using a hose so that the material settles. Since the cleaning process is important, remove any equipment or material that you don't need anymore.

SR

Isprskati celu površinu koristeći crevo kako bi se materijal pravilno nataložio. Budući da je čišćenje važno, pomeriti svu opremu i sav materijal koji vam više nije potreban

## Proper roll stacking Pravilno slaganje rolni



# INSTALLATION





## INSTALLATION

In order to meet customer expectations and show all carpet benefits, it is necessary to install the carpet in the proper way. This involves carpet installation with full surface gluing, and installation in type of rooms prescribed by technical characteristics of the product in the category „area of use“. This is an ideal method of installation, and in some cases the only possible one – such as in areas with sloping surfaces, bends and high trac. The carpet installed in this way is very well fixed to the floor, carpet matches are not visible, and edges are not worn out. The same method for carpet installation applies to the tufted and needlepunched carpets. In case of claims regarding use properties (strength, waves, fractures of structures, peeling, loss of thickness, etc.) only carpets installed in the mentioned way, may be subject to review.

Due to the specific manufacturing process, there may be deviations in colors within the type of product between two different production series. Therefore, it is necessary to use rolls from the same production series for installation in one space.

## POSTAVLJANJE

Kako bi tepison izašao u susret očekivanjima potrošača i ispoljio sve svoje kvalitete, potrebno je da se adekvatno postavi. Ovo podrazumeva isključivo postavljanje tepisona lepljenjem pune površine i postavljanje u tip prostorije propisan tehničkim karakteristikama datog proizvoda u kategoriji „klasa upotrebe“. Postavljanje tepisona punim površinskim lepljenjem je idealan način postavljanja, a u nekim slučajevima i jedini mogući – u prostorijama gde postoje nagibi, pregibi, gde je velika frekvencija prolaza. Tepison koji je na ovaj način instaliran je veoma dobro fiksiran za pod, spojevi tepisona se ne primećuju a ivice ne habaju. Isti princip postavljanja važi i za tafting tepisone i za iglane podove.

U slučaju reklamacija na upotrebna svojstva (izdržljivost, talasi, prelomi strukture, piling, gubitak debljine itd.) samo tepisoni postavljeni na gore pomenut način mogu biti predmet razmatranja.

Zbog specifičnosti postupka proizvodnje, postoji mogućnost odstupanja nijanse u okviru tipa proizvoda između dve različite serije proizvodnje. Iz tog razloga je u istoj prostoriji neophodno koristiti rolne iz iste serije proizvodnje.



## INSTALLATION

Several activities should be done before carpet installation:

### •REMOVING THE FURNITURE

It is necessary to remove all furniture and previously installed carpet.

### •LEVELING THE SUB FLOOR

All observed cracks and bumps on the floor need to be leveled.

### •CLEANING THE SURFACE

Surface on which the carpet will be installed needs to be clean.

### •SURFACE AND WALLS HUMIDITY TEST

Surfaces need to be completely dry.

### •TEMPERATURE NEEDED FOR INSTALLATION

Optimal temperature of the room is around 15°C, and relative air humidity not more than 70%.

Carpet, as well as the glue to be used for installation must be acclimated in the room, where it will be laid. Carpet needs to be unrolled to adapt to the room temperature at least 24h before installation.

**Note:** Tarkett recommends installation to be made by professional, certified installers. If you notice any defect on the product, it is necessary to stop the installation and contact nearest Tarkett representative. Tarkett will not be responsible for the costs related to repair or replacement of installed floor coverings, which has been identified to have an obvious defect before installation.

## POSTAVLJANJE

Pre nego što se pristupi ugradnji tepisona, potrebno je obaviti nekoliko pripremnih radnji:

### •UKLANJANJE NAMEŠTAJA

Potrebno je ukloniti sav nameštaj, ukoliko postoji, ranije postavljentepison.

### •PORAVNAVANJE PODLOGE

Sve primećene pukotine i neravnine napodu je potrebno izravnati.

### •ČIŠĆENJE POVRŠINE

Podloga na koju će tepison biti postavljen treba da je čista.

### •PROVERA VLAŽNOSTI PODLOGE IZIDOVA

Potrebno je da podloga bude u potpunosti suva.

### •TEMPERATURA POTREBNA ZA UGRADNJU

Optimalna temperatura prostorije za postavljanje tepisona treba da bude oko 15°C, a relativna vlažnost vazduha ne više od 70%.

Tepison, kao i lepak koji će se koristiti za ugradnju, moraju se prethodno aklimatizovati u prostoriji u koju će se postaviti. Tepison je potrebno raširiti i ostaviti da se aklimatizuje najmanje 24h pre početka postavljanja.

**Napomena:** Tarkett preporučuje da postavljanje realizuju kvalifikovani, sertifikovani podopolagači. Ukoliko se primeti bilo kakav nedostatak na proizvodu, neophodno je prekinuti instalaciju i obratiti se najbližem Tarkett predstavniku. Tarkett neće snositi odgovornost za troškove nastale u vezi popravke ili zamene ugrađene podne obloge, za koju je utvrđeno da je posedovala očigledan nedostatak pre same ugradnje.



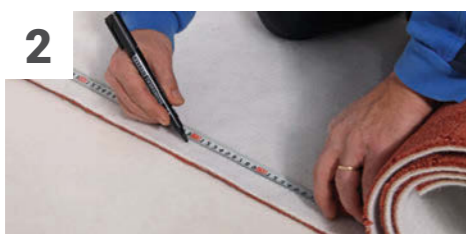
## INSTALLATION

## POSTAVLJANJE



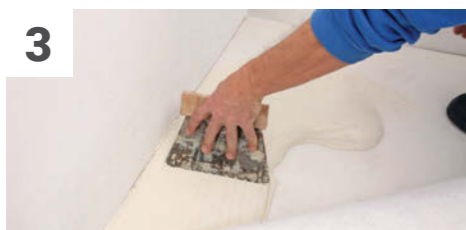
1 It is necessary to measure dimensions of the floor, where carpet will be installed. Make scheme of the floor with marked places for doors, stairs, bulges. Based on the scheme, it is necessary to add 5-10 cm more on calculated width and length, that is needed for fine cutting and carpet fitting.

Potrebno je izmeriti dimenzije poda prostorije u koju se postavlja tepison i potom napraviti skicu poda sa ucrtanim vratima, stepenicama, nišama i izbocinama. Na dobijenu skicu je potrebno dodati po 5-10 cm na izracunatu dužinu i širinu, jer se fino osecanje i uklapanje vrši prilikom samog postavljanja.



2 According to the installation scheme, measures are placing on a carpet's back side. With a help of the flat ruler, carpet is cut according to the drawn dimensions, by a scalpel.

Shodno skici postavljanja, ucrtane mere se prenose na poledinu tepisona. Uz pomoć ravnog lenjira, vrši se isecanje tepisona po ucrtanim dimenzijama, pomoću skalpela.



3 Adhesive needs to be applied on the base floor. It is desirable that the adhesive is evenly spread on the base. Use of water-based adhesives is recommended.

Na pod se nanosi lepak i što ravnomernije razmazuje po podlozi; preko lepka se postavlja tepison. Preporučuje se korišćenje lepila na vodenoj bazi.



4 Carpet surpluses need to be cut with scalpel for better fitting.

Viškovi tepisona se isecaju pomoću skalpela, radi njegovog boljeg uklapanja u prostoriju.

## INSTALLATION

## POSTAVLJANJE



6 Metal iron, flat and solid object is using for passing over the carpet in order to spread it as evenly on the floor as possible.

Pomoću metalne pegle, odnosno ravnog i čvrstog predmeta se prelazi preko tepisona, kako bi se isti što ravnomernije raširio po podu.



7 In case of carpet installation which is consisted of several parts, so called carpet strips, it is necessary to pay attention to pattern fitting and pile direction. Because of this, it is needed to prepare carpet strips that are 5-10cm longer than the ones calculated in the plan. When installing next strips, leftovers (carpet surpluses) are cut for better pattern fitting.

U slučaju da se postavlja tepison iz više delova, odnosno traka tepisona, potrebno je obratiti pažnju na uklapanje šare i smer flora. Zbog ovog razloga se pripremaju trake tepisona od 5-10 cm duže nego po ucrtanom planu. Prilikom postavljanja narednih traka tepisona, vrši se isecanje viškova na način da se šara što bolje uklapi.



8 The laid carpet should be cleaned and it is ready for using. The movement on it is allowed immediately after installation, but it is recommended to use room normally 72 h after installation.

Tepison je potrebno očistiti i spreman je za upotrebu. Kretanje po njemu je dozvoljeno odmah nakon lepljenja, ali preporuka je da se prostorija uobičajeno koristiti 72h nakon završetka postavljanja.

# MAINTENANCE



## MAINTENANCE

Every type of floor or floor coverings requires regular maintenance, cleaning and treatment in accordance with the prescribed measures. Carpet is very easy to maintenance. All that is needed for carpet maintenance is a good vacuum cleaner or a brush. Regular vacuum cleaning, at least once a week, is the best way for carpet maintenance.

Beside regular maintenance, it is recommended to use doormats, as the best prevention in carpet maintenance. The best way to reduce the amount of dirt in the room is to control the source where it comes from. By putting the doormats at the front door, getting dirt in the room will be minimized.

## ODRŽAVANJE

Svaka vrsta poda ili podne obloge zahteva redovno održavanje, čišćenje i tretiranje u skladu sa predviđenim merama. Tepison se održava vrlo jednostavno. Sve što je potrebno za održavanje tepisona je dobar usisivač ili četka. Redovno usisavanje, barem jednom nedeljno, je najbolji način održavanja.

Pored redovnog usisavanja, preporučuje se i upotreba otirača, kao najbolje prevencije u održavanju tepisona. Najbolji način da se smanji količina prašine u prostoriji je kontrola izvora njenog nastanka. Postavljanjem otirača ispred domova se minimizira dospevanje nečistoće u prostorije.

## STAIN REMOVAL

As soon as stain is noticed, it is important to act fast in order to remove it. On this way a great number of stains can be removed eectively only with slightly warm water.

Advices:

1. at first place paper towel on the stain in order to gather as much as liquid is possible,
2. always clean stain from the outside of the stain to the center – this way prevents stain spreading,
3. for removing solid material/stain, use a spoon or similar object.

Note: In case you failed to remove stain following mentioned advices, we recommend you to hire a professional agency specialized for this type of job, as for the cleaning job as well.

## OTKLANJANJE MRLJA

Čim se na tepisonu primeti mrlja, veoma je važno da se odmah reaguje u pravcu njenog otklanjanja. Na ovaj način se veliki broj mrlja može efektno otkloniti uz pomoć mlake vode.

Saveti:

1. najpre je potrebno pokupiti što više tečnosti postavljanjem papirne salvete na samu mrlju,
2. mrlju uvek čistiti od spoljašnjih granica mrlje ka centru - na ovaj način se sprečava širenje mrlje,

3. za otklanjanje cvrstog materijala/mrlje, potrebno je koristiti kašiku ili slican predmet. Napomena: U slučaju neuspelog samostalnog otklanjanja mrlje na navedeni način, preporučujemo da se angažuje profesionalna agencija, specijalizovana za ovu vrstu posla, kao i za poslove čišćenja tepisona.



## Carpets suitable for disinfection at home

Textile floor coverings with a Home disinfection mark consist of materials that facilitate regular disinfection with alcohol-based household products, securing no carpet damage, if following the instructions given below.

Disinfection is possible with the usage of standard household cleaning products in several ways. Use of ethyl alcohol (75%) or Asepsol (5% benzalkonium chloride) is recommended.

### INSTRUCTIONS FOR EFFICIENT AND SAFE DISINFECTION

1. While applying disinfection product on a carpet, please wear a protective mask and gloves, as well as protective glasses if needed. During and after the disinfection, it is necessary to ventilate the room.

2. The maximum recommended amount of disinfection product is 500ml per square meter of carpet.

3. Applying the disinfectant is proposed with a spray bottle or soaked sponge. When using a spray bottle, apply the disinfectant at a 20-30cm distance from the carpet. When disinfecting with a sponge, mop the carpet surface and leave it to dry completely before using the carpet again.

4. When using Asepsol, it is recommended to use a 5% solution. After the disinfection let the carpet dry completely before you use it again.

5. In the disinfection process it is necessary to comply with safety measures and application instructions provided by the disinfectant manufacturers.

## Tepioni pogodni za dezinfekciju u kućnim uslovima

Tekstilne podne obloge sa oznakom Home disinfection napravljene su od materijala koji omogućavaju redovnu dezinfekciju sredstvima na bazi alkohola u kućnim uslovima bez oštećenja tepisona, uz pridržavanje dole navedenih uputstava.

Dezinfekcija se može izvršiti korišćenjem standardnih sredstava za čišćenje u domaćinstvu i na nekoliko načina. Preporučena je upotreba Etil alkohola (75%) ili Asepsola (5% benzalkonijum hlorid).

### UPUTSTVO ZA EFIKASNU I BEZBEDNU DEZINFEKCIJU

1. Prilikom nanošenja dezinfekcionog sredstva na tepison, neophodno je koristiti zaštitnu masku i rukavice, a po potrebi i zaštitne naočare. Završeno i nakon dezinfekcije obavezno je provetravanje prostorija.

2. Maksimalna preporučena količina dezinfekcionog sredstva je do 500ml podne obloge.

3. Preporučeno je nanošenje dezinfekcionog sredstva sprej bocom ili natopljenim sunđerom. Sprej bocom sredstvo nanosi sa 20-30cm rastojanja, dok je za dezinfekciju sunđerom potrebno prebrisati površinu tepisona i ostaviti da se tepison potpuno osuši pre korišćenja.

4. U slučaju korišćenja Asepsola, preporučljivo je koristiti rastvor od 5% i dozvoliti da se tepison nakon dezinfekcije potpuno osuši pre korišćenja.

5. U procesu dezinfekcije neophodno je pridržavati se propisanih mera bezbednosti i pravila upotrebe naznačenih od strane proizvođača dezinficijensa.



