

Prestigio



# MultiPhone 5508 DUO

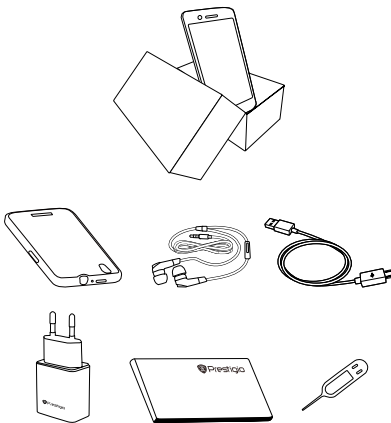
Prestigio MultiPhone 5508 DUO has a two-year warranty. You may find detailed warranty information at: [www.prestigio.com/support/warranty-terms](http://www.prestigio.com/support/warranty-terms).

© Copyright 2014 Prestigio. All rights reserved.



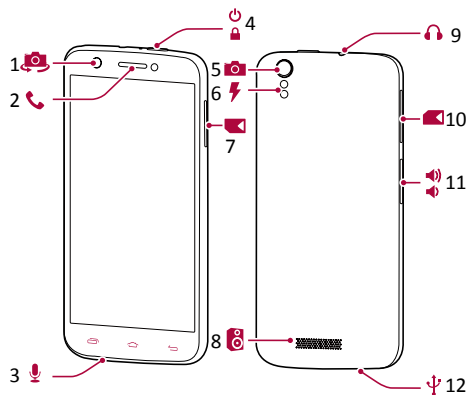
**Inside your package**  
**Your phone at a glance**  
**Buttons**

## Inside your package



- Prestigio MultiPhone
- Carrying case
- Earphones
- USB cable
- Adapter
- SIM eject tool
- Quick start guide
- Legal & safety notices
- Warranty card

## Your phone at a glance







- |                 |                            |
|-----------------|----------------------------|
| 1. Front camera | 7. Micro SIM card slot     |
| 2. Earpiece     | 8. Speaker                 |
| 3. Microphone   | 9. Earphone jack           |
| 4. Power button | 10. Standard SIM card slot |
| 5. Rear camera  | 11. Volume button          |
| 6. Flash        | 12. Micro USB port         |



**Inside your package**  
**Your phone at a glance**  
**Buttons**

## Buttons

The back, start and search keys help you navigate your phone.

- Tap  to open a list of options available on the current screen. To open the list of recent apps, tap and hold .
- Tap  to return to the home screen.
- Tap  to return to the previous screen.



Do not cover the antenna area with your hands or other objects. This may cause connectivity problems or drain the battery.



Please read the "Legal and safety notices" in your package before use.



# Getting started



## Installation

Power on your phone

Home screens

List menu

Congratulations on your purchase and welcome to Prestigio. To get the most from your product and enjoy all that Prestigio has to offer, please visit:

[www.prestigio.com/catalogue/MultiPhones](http://www.prestigio.com/catalogue/MultiPhones)

For more details about your product, please visit:

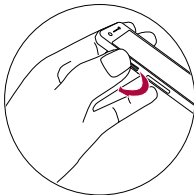
[www.prestigio.com/support](http://www.prestigio.com/support)

## Installation

Follow the steps below to prepare your phone for using. Remember to turn off your mobile phone before removing the rear panel.

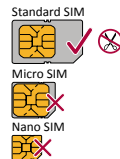
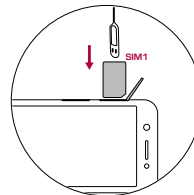
1

Open the cover of the SIM card slot.



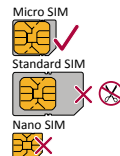
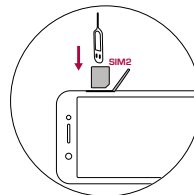
2

Insert the standard SIM card.



3

Insert the micro SIM card.





## Installation

Power on your phone

Home screens

List menu



- The use of incompatible SIM cards, manually cut SIM cards, or SIM card adapters may damage the cards or the device, and it may corrupt the data stored on the cards.
- Scratching or bending of the SIM cards may result in the loss of contacts and information, so be careful when handling, inserting, or removing the cards.



Frequent writing and erasing of data shortens the lifespan of memory cards.

### Dual SIM standby



The device supports two SIM cards for voice calls and data connection. During a voice call or data transfer via one SIM card, the other SIM card becomes inactive (not registered with your mobile network operator). This means that you cannot receive incoming calls or use data connection via the inactive SIM card. When the call or data transfer ends, both SIM cards will become active and show on the list of registered networks.



Installation

**Power on your phone**

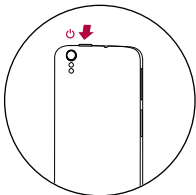
Home screens

List menu

## Power on your phone

4

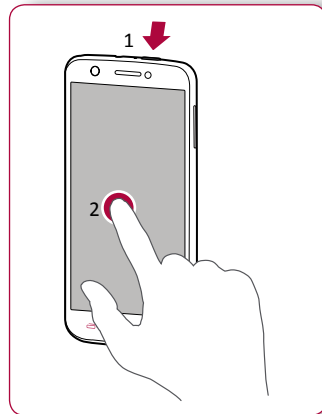
Press and hold the power button for a few seconds.



When turning on the device for the first time, follow the on-screen instructions to set up your device.



To turn off your phone, press and hold the power key, and then tap **Power off** on the pop-up screen.





## Installation


Power on your phone

Home screens

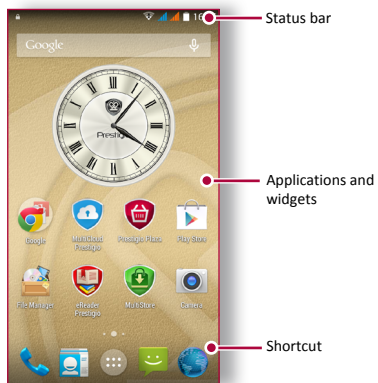
List menu

## Home screens

Your home screen is the starting point to access all of your phone's features. The home screen can have multiple panels. To view other panels, swipe left or right.


Tap  to return to the home screen.

Your phone's home screen consists of the following:




## Personalise your wallpaper

Pick your favourite photo as your Home wallpaper. Choose from the available wallpapers, or use any photo you have taken with the camera.

1. On the home screen, tap  > **Wallpaper**.
2. Select an image and tap **Set wallpaper**.

## Add an app icon to home screen

1. On the home screen, tap  to open the list menu.
2. Tap and hold an application icon.
3. Drag it into a panel preview.

## Remove an item on home screen

1. Tap and hold an item to remove.
2. Drag the item to the **Remove** option.
3. When the **Remove** option turns red, release the item.



Installation

Power on your phone



Home screens

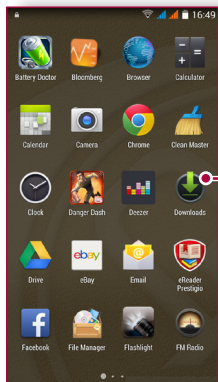
List menu

## List menu

All your apps' icons can be found on the list menu.

On the home screen, tap  to open the list menu.

Tap  or  to return to the home screen. Your phone's list menu consists of the following:



Applications





## Finger tips

Charge the battery

Connect to your PC

Rotate the screen

Lock and unlock the screen

Use the notifications panel

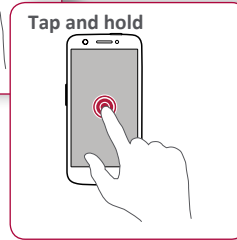
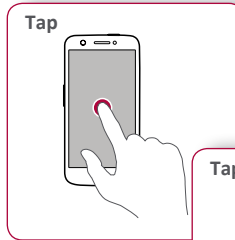
Enter text

System update

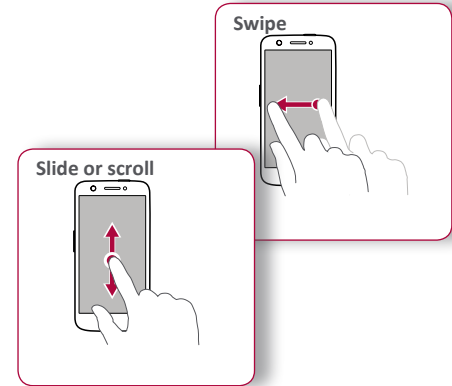
Status icons

## Finger tips

Only use your fingers to use the touch screen.



- To open an application, to select a menu item, to press an on-screen button, or to enter a character using the on-screen keyboard, tap it with a finger.
- Tap and hold an item for more than 2 seconds to access available options.



- Quickly swipe your finger vertically or horizontally across the screen to go to other home pages, scroll through documents, and more.
- Slide your finger vertically across the screen to open drop-down menu. Drag up or down to scroll.



### Finger tips

Charge the battery

Connect to your PC

Rotate the screen

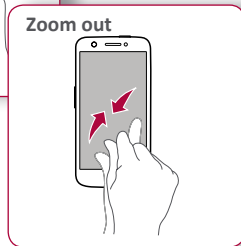
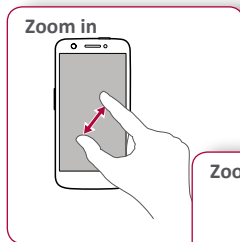
Lock and unlock the screen

Use the notifications panel

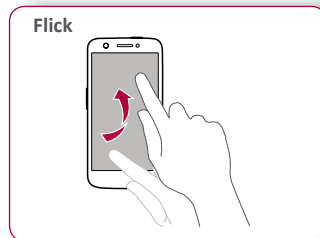
Enter text

System update

Status icons



- Spread two fingers apart on a web page, map, or image to zoom in a part.
- Spread two fingers together on a web page, map, or image to zoom out a part.



- Flick left or right on the home screen or the applications screen to see another panel. Flick up or down to scroll through a web page or a list, such as contacts.



### Finger tips

### Charge the battery

Connect to your PC

Rotate the screen

Lock and unlock the screen

Use the notifications panel

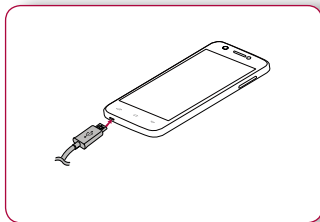
Enter text

System update

Status icons

## Charge the battery

A new battery is partially charged. The battery icon at the upper-right corner shows the level of charging status.



1. Plug the small end of the charger into the micro USB port of the device, and plug the large end of the charger into an electric socket.
2. After being fully charged, disconnect the device from the charger. First unplug the charger from the device, and then unplug it from the electric socket.



Always use authentic accessories to optimise your battery performance. Non-authentic accessories (eg. chargers) can damage your battery and even your phone.

### Optimise your battery performance

Here are some tips to help you optimise your battery performance.

- Always ensure that your phone profile is appropriately set to meet your actual usage.
- If you are not using Bluetooth, Wi-Fi, GPS or other applications, turn them off.
- Adjust the intensity of your display screen's backlight to low or medium level and for the shortest duration.
- Avoid using or placing your phone near magnetic objects (eg. a radio or television) or on metal surfaces, which will impact the network connection and ultimately drain power from your battery.



### Finger tips

Charge the battery

Connect to your PC

Rotate the screen

Lock and unlock the screen

Use the notifications panel

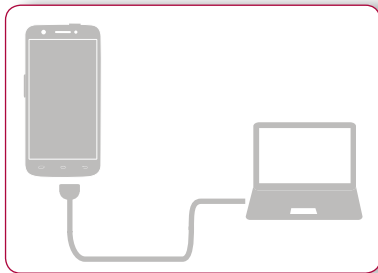
Enter text

System update

Status icons

## Connect to your PC

You may need to connect your phone to a PC in order to complete activation. Your phone's micro USB port allows you to exchange media and other files with a PC.



## Load files from your PC

1. Connect your phone to the PC with the included USB cable.
2. Open the notifications panel, and then tap **Connected as a media device > Media device (MTP)**.
3. Transfer files between your phone and the PC.

## Rotate the screen

For many screens, you can automatically change the screen orientation from portrait to landscape by turning your phone sideways. When entering text, you can turn your phone sideways to bring up a bigger keyboard.



To prevent the display from rotating automatically, open the notifications panel and deselect **Auto rotation**.



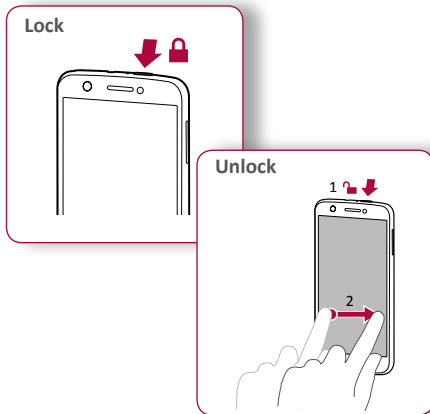
- Some applications do not allow screen rotation.
- Some applications display a different screen depending on the orientation.



**Finger tips**  
**Charge the battery**  
**Connect to your PC**  
**Rotate the screen**  
**Lock and unlock the screen**  
**Use the notifications panel**  
**Enter text**  
**System update**  
**Status icons**


## Lock and unlock the screen

When not in use, lock your phone to prevent unwanted operations and save the battery power.



## Auto lock

You can set a time span for the screen to be locked automatically.

1. On the list menu, tap  **Settings >Display > Sleep**.
2. Select your desired time span.

## Set screen lock pattern

Protect your personal information and prevent others from using your phone without your permission by setting a screen lock pattern, PIN, or password.

- On the list menu, tap  **Settings >Security > Screen lock**.



When your phone is locked, Your phone can still:

- Receive calls, text messages, and other updates
- Play music
- Adjust the volume



### Finger tips

**Charge the battery**

**Connect to your PC**

**Rotate the screen**

**Lock and unlock the screen**

**Use the notifications panel**

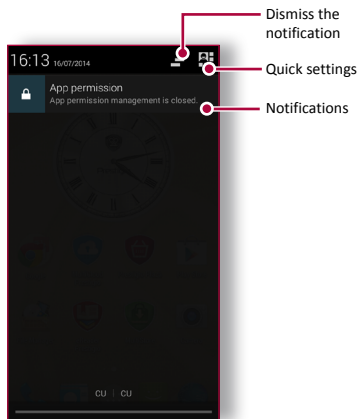
**Enter text**

**System update**

**Status icons**

## Use the notifications panel

Slide down from the top of the screen to open the notifications panel. When you get a new notification, you can open it to see what event or new info you have received. You can also quickly access settings from it. It allows you to easily turn airplane mode, Wi-Fi, and Bluetooth on and off. It also provides a shortcut to set the brightness and orientation of your screen.



## Enter text

Use the on-screen keyboard to enter text, such as contact information, mail, and web addresses.

## Use the keyboard



1. Character keys
2. Shift key
3. Numbers and symbols key
4. Enter text by voice
5. Space key
6. Enter key
7. Backspace key



## Finger tips

Charge the battery

Connect to your PC

Rotate the screen

Lock and unlock the screen

Use the notifications panel

Enter text

System update

Status icons


### Enter text by voice

You also can enter the text by activating the voice input feature and then speak into the microphone.


Your phone displays what you speak.

Voice typing: tap  on the screen.

### Copy and paste text

- Tap a word, drag the circles before and after the word to highlight the section you want to copy, and tap .
- To paste the text, tap and hold at the point where you want to paste the text. Tap **Paste**.

## System update


















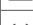

Your phone can check and notify you if there is a new upgrade available. You can also manually check if there is an available update. You can set this option in  **Settings > About phone > updates**.



Do not press any keys while the device is upgrading.

## Status icons

The icons in the status bar at the top of the screen give information about your phone:

	Silent mode activated		3G network connected
	Vibration mode activated		Wi-Fi connected
	Airplane mode activated		Roaming (outside of normal service area)
	Battery power level		Bluetooth is activated
	Calls in progress		Connected to PC
	Missed call		Wired earphone + microphone connected
	New SMS or MMS		Wired earphone connected
	GPRS network connected		No SIM card detected
	EDGE network connected		Alarm is set
	HSPA network connected		







**Calls**  
**Contacts**  
**Contact groups**



Learn to use calling functions, such as making and answering calls, using options available during a call or customising and using call-related features.

## Calls

### Make and end a call

1. On the home screen or list menu, tap  **Phone**.
2. Tap  to open the dial pad.
3. Enter the phone number, and then tap .
4. Tap  to end a call.

### Answer a call



When you receive a phone call from a contact, the incoming call screen appears. To pick up the phone, Slide  to .

### Silence an incoming call

When a call comes in, press the power button or volume button to mute the ringing sound without rejecting the call

### Set up a conference call

If network is available, you can make the first call or accept a call. Then simply dial each subsequent call to add it to the conference.

1. During a call, tap  to make a call to another person.
2. The second number is dialled, and the first call is put on hold at this time.
3. Tap  to add the contact to a conference call.



Make sure your SIM card is enabled with conference calling service. Contact your mobile operator for details.








## Calls

### Contacts

### Contact groups

### Make an emergency call

In some regions, you can make emergency calls even if you do not have a SIM card installed or your SIM card has been blocked.

1. On the home screen, tap  **Phone**.
2. Tap  to open the dial pad.
3. Dial the emergency number for your location, and then tap .




If you are out of base station coverage, you will not be able to make an emergency call.




In Europe, the standard emergency number is 112; in the UK, it is 999.

### Contacts

Contacts are stored in one of the two available phone books: SIM phone book (located on your SIM card) or the Smart phone book (located on your phone).




- To view your contacts, tap  **People** on the home screen or list menu.

### Search for a contact



1. Scroll up or down the contact list.
2. Tap  and enter the first few letters of the name in the search bar.
3. Select the contact from the option list.

### Add a new contact

#### Method one:

1. On the home screen or list menu, tap  **Phone**.
2. Tap  to open the dial pad.
3. Enter a number, tap  **Add to contacts**.
4. Add details as desired.
5. Tap **Done** to finish and save.



#### Method two:

1. Go to  **People** to view the contact list.
2. Tap  to add a new contact.





**Calls**  
**Contacts**  
**Contact groups**

### Import/Export contacts

1. Go to  **People** to view the contact list.
2. Tap  > **Import/export**.
3. Select the contacts storage.
4. Follow the prompts to finish.




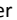
### Delete contacts

1. Go to  **People** to view the contact list.
2. Tap  > **Delete contact**.
3. Choose the contacts you wish to remove.
4. Tap **OK** to delete the contacts.

### Contact groups

You can group your contacts as different groups. For different groups, you can use different identifications, and send messages to a group.

### Add contacts to a group

1. Go to  **People** to view the contact list.
2. Tap  to view contact groups.
3. Tap  to add contacts to a group.
4. Enter your group's name, and tap  to add contacts.



# Messages



**Send a message**

**Check your message**



**Reply to a message**

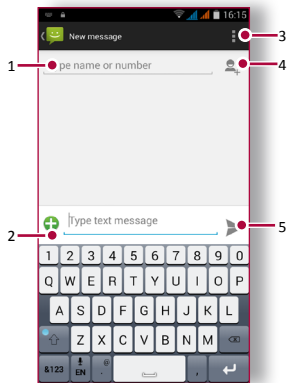
**Forward or delete a message**

**Delete a conversation**

Messages let you exchange text messages with other SMS and MMS devices via your cellular connection. Your sent and received messages are neatly grouped into conversations, by contact name or phone number.

## Send a message

On the home screen or list menu, tap  **Messaging**. And then tap  to start composing a new message.



1. Enter a phone number
2. Add picture/video/audio/slideshow
3. More options
4. Add a recipient from your contacts list
5. Send the message



There is a limit on the number of characters for a single text message (displayed above the send button). If you exceed the limit, your text message will be delivered as one but will be billed as more than one message.



Send a message

Check your message


Reply to a message

Forward or delete a message


Delete a conversation

### Check your message

Depending on your notification settings, your phone plays a sound, vibrates, or displays the message briefly in the status bar when you receive a new message.

- On the home screen or list menu, tap  **Messaging**. To check a message, tap a conversation.



### Reply to a message

1. On the messages screen, tap the conversation containing the message.
2. In the text box, enter your message.
3. Tap  to send the message.

### Forward or delete a message

1. On the messages screen, tap the conversation containing the message.
2. Tap and hold a message.
3. In the pop-up window, select **Forward** or **Delete**.

### Delete a conversation

1. On the home screen or list menu, tap  **Messaging** to display the messages screen.
2. Tap and hold a contact or phone number.
3. Tap  at the bottom of the screen.



**Set up an email account**

**Send a mail**



**View your mails**

**Reply to a mail**

**Delete mails**

Use this application to send or view email messages. Learn to send or view email messages via your personal or company email account.



## Set up an email account

1. On the home screen or list menu, tap  **Email** and do one of the following:
  - If this is your first time adding an email account in Mail, move to the next step.
  - If you have already added an email account, then tap  > **Settings** > **add account**.
2. Enter the email address and password for your email account.





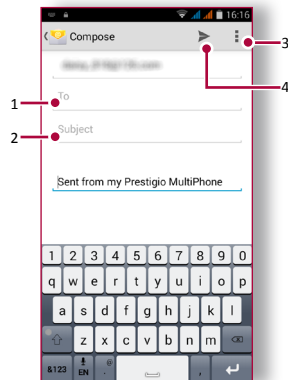
When you finish setting up the email account, the email messages will download to your device.

## Delete an email account

1. Go to  **Settings** > **Accounts**.
2. Tap the email account you want to delete.
3. Tap  > **Remove account**.

## Send a mail

On the home screen or list menu, tap  **Email**. And then tap  to start composing a new mail.



1. Enter a recipient
2. Enter the mail subject
3. More options
4. Send the mail



**Set up an email account**


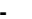

**Send a mail**

**View your mails**


**Reply to a mail**

**Delete mails**



### **View your mails**

1. On the email inbox, tap  to check whether there is a new mail.
2. Tap the desired mail to read it.
  - Use  or  to view the previous or next mail.


### **Search for a mail**

1. Tap  to display the search bar.
2. Choose a search option in the drop-down list.
3. Enter the first few letters of the mail sender or subject in the search bar.
4. Select the mail from the list.

### **Reply to a mail**

1. On the email inbox, tap the email message.
2. Tap , and then compose your mail.
3. Tap  to send the mail.

### **Delete mails**

- Tap the mail you wish to delete, and then tap .




## Your camera at a glance

Take a photo

Record a video

Photo and video settings

With your phone, you can take both photos and videos as desired. In addition to a rear camera, there is a camera on the front for video calls and self-portraits.


- To use the camera, on the home screen or list menu, tap  **Camera**.

## Your camera at a glance





1. Capture mode
2. Image preview
3. Capture photo
4. Video recording
5. Phone / video settings
6. Flash settings
7. Switch between front/rear camera

## Take a photo



1. Turn on the camera.
2. Change the camera setting if necessary.
3. Point the camera at what you want to capture.
4. Tap  to capture the photo.

## Take a photo of yourself

1. Turn on the camera.
2. On the screen, tap .
3. Tap  to capture the photo.

## Take a panoramic photo



You can capture anything wide or tall objects in a single photo with your phone.

1. Turn on the camera.
2. Scroll down the capture modes, and then tap .
3. When you are ready to take the first shot, tap .
4. A directional arrow appears. Pan your phone as smoothly as you can.
5. The camera will stitch the shots into a single photo.



Your camera at a glance  
 Take a photo  
 Record a video  
 Photo and video settings

## Record a video

1. Turn on the camera.
2. When you are ready to start recording, tap .
3. To stop recording, tap .

## Photo and video settings

Before you take a photo or record a video, customise your photo/video settings.

General settings	
<b>GPS location info</b>	Attach a GPS location tag to the photo.
<b>Exposure</b>	This determines how much light the camera's sensor receives.
<b>Scene mode</b>	Select your desired scene mode.
<b>White balance</b>	Select an appropriate white balance, so images have a true-to-life colour range.
<b>Anti-flicker</b>	Select a band to avoid the impacts on photos caused by flickers from lighting sources.
<b>Restore defaults</b>	Restore to default settings.
Photo settings	
<b>Zero shutter delay</b>	The ZSD (zero shutter delay) function helps you capture photos immediately.
<b>Face detection</b>	Set the ideal exposure and clarity of faces.
<b>Self timer</b>	Select a time span for shutter delay to take a self-portrait.

<b>Picture size</b>	Select from various standard sizes for your picture.
<b>Preview size</b>	Set the preview screen ratio before you take a photo.
<b>ISO</b>	An ISO value indicates the light sensitivity of your camera's imaging sensor. Higher values are for fast-moving or poorly-lit objects.
Video settings	
<b>EIS</b>	The EIS (Electronic Image Stabilization) function helps reduce blurring associated with the motion of a camera during exposure
<b>Time lapse interval</b>	Set the time lapse interval to adjust the speed of your video output.
<b>Video quality</b>	Set the quality level for videos as this setting will affect your file size.





## Gallery

Video player


Music player

FM radio

Your phone provides several multimedia for your entertainment. You can view your photo gallery, enjoy music, and watch videos.

## Gallery

### View your photos

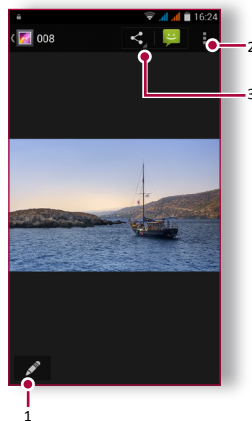
1. On the home screen or list menu, tap  **Gallery**.
2. Browse an album or a group of photos.
3. Tap a photo to view it full-screen.

### Zoom in and out

Spread two fingers apart on any place to zoom in.  
Pinch to zoom out, or double-tap to return.

### Edit your photos

When viewing a photo, use the keys on the screen to edit the photos.



1. Edit the photo
2. More options
3. Share your photo



Gallery

**Video player**



**Music player**

**FM radio**

## Video player

You can use the video player on your phone to watch videos.




### Watch a video

1. On the home screen or list menu, tap  **Videos**.
2. Select the video that you want to watch.
3. Tap the on-screen keys to control the video playback.
4. Press the volume button to adjust the sound.
5. Tap  to select more options.

## Music player

You can listen to your favourite music with the music player. The music app is a central hub for your favourite music whether it is stored in your phone or streamed through a music service.

### Listen to music

1. On the home screen or list menu, tap  **Music**.
2. Tap a song from the list, or tap  to find your desired song.
3. Tap the on-screen keys to control the music playback.
4. Press the volume button to adjust the sound.
5. Tap  to select more options.



Video player  
Music player  
FM radio




## FM radio

You can listen to radio programs with your phone.



You must connect a headset before using the FM radio on your phone.

### Listen to a radio station

1. On the some screen or list menu, tap  **FM Radio**.
2. Tap  > **Search**. It will start scanning automatically and save the available channels.
3. Use the on-screen keys to control playback:
4. Press the volume button to adjust the sound.
5. Tap  to select more options.



# Web & network



## Connect to the Internet Web browse

You can connect your phone to the Internet and browse a web page.


### Connect to the Internet

Your phone connects to the Internet whenever necessary, using a Wi-Fi connection (if available) or your mobile operator's data connection.

### Data connection

You can use your mobile operator's data connection.

#### Turn on data connection

1. Go to  **Settings** > **More...** > **Mobile networks** > **Data connection**.
2. Tap to turn on or off data connection.




Some apps and services may transfer data over your mobile operator's cellular network, which may result in additional fees. Contact your mobile operator for details.

#### Turn on data roaming

Connect to your mobile operator's partner networks and access data services when you are out

of your mobile operator's coverage area.


1. Go to  **Settings** > **Data usage**.
2. Tap  > **Data roaming** to turn it on or off.



Using data services while roaming may be costly. Check with your mobile operator for data roaming rates before you use data roaming.

### Use your phone as a wireless router

Share your data connection with other devices by turning your phone into a wireless router.

1. Go to  **Settings** > **More...** > **Tethering & portable hotspot**.
2. Tap to turn on portable Wi-Fi hotspot.



The other device uses data from your data plan, which may result in data traffic costs. For info on availability and costs, contact your network service provider.




## Connect to the Internet Web browse

### Wi-Fi

Connect the device to a Wi-Fi network to use the Internet or share media files with other devices.


#### Connect to a wireless network

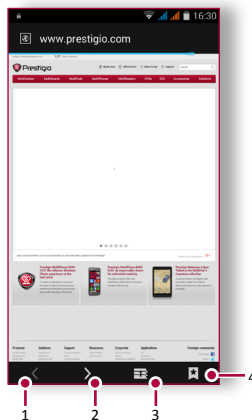
1. Go to  **Settings > Wi-Fi**.
2. Make sure **Wi-Fi** is switched to **On**.
3. The Wi-Fi section will show the list of networks detected.
4. Tap the desired Wi-Fi network you want to connect to.
  - If you selected a secured network, you will be asked to enter the network key or password.

### Web browse

You can use your phone to browse websites. Before browsing a website, please confirm that you have turn on data connection or Wi-Fi.

#### Browse a web page

1. On the home screen or list menu, tap  **Browser**.
2. Enter your search keywords or a web page address.



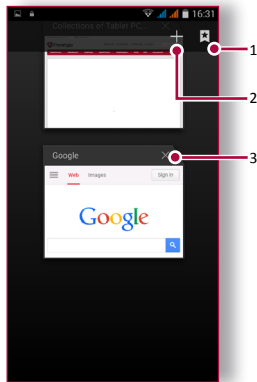
1. The previous web page
2. The next web page
3. Web page preview
4. View **Bookmarks, History and Saved pages**.

Prestigio



Connect to the Internet  
**Web browse**

## Web page preview



1. View **Bookmarks**
2. Open a new page
3. Close the web page




# Bluetooth



- Pair with a Bluetooth device**
- Receive data via Bluetooth**
- Send data via Bluetooth**

Your phone can connect to a compatible Bluetooth device for exchanging data. Bluetooth creates a direct wireless connection between two devices over short distances.


## Pair with a Bluetooth device

1. Go to  **Settings** > **Bluetooth**.
2. Make sure **Bluetooth** is switched to **On**.
3. A list of available Bluetooth devices will appear.
4. Tap the device you wish to connect with.
5. The pairing is made if your pairing request is accepted by the other device.

## Receive data via Bluetooth

1. Make sure **Bluetooth** is switched to **On**.
2. Tap your phone model to make it visible to all nearby Bluetooth devices.
3. Accept the request and pair with the other Bluetooth device(s).
4. Slide to open notifications panel, tap **Accept**.

## Send data via Bluetooth

1. Select the file you want to share.
2. Tap  to send the file via Bluetooth.
3. Select a device to start sending the file.



The files received via Bluetooth are stored in the Bluetooth folder.





## Search and install an app Uninstall an app

Use the Google Play Store to purchase and download applications and games that are able to run on your phone. Choose from a wide variety of free and paid apps ranging from productivity apps, entertainment, to games.



- A Google Wallet™ payment service is required to purchase a paid app. You will be asked to confirm the method of payment when you purchase an app.
- The availability of Store and the selection of items available for download depend on your region.



## Search and install an app

1. On the list menu, tap  **Play store**.
2. Browse applications by category, or tap  to search with a keyword.
3. Select an application to view information.
4. To download it, tap **Install**.
  - If there is a charge for the application, tap the price, and follow the prompts to complete the purchase.



Use a Wi-Fi connection to download large files.

## Uninstall an app

1. On the list menu, tap  **Play store**.
2. Tap  > **My Apps**.
3. Select an app you want to uninstall.
4. Tap **Uninstall**.





# Maps & navigation




**Use Google maps**  
**Find a location**  
**Search for a place**  
**Get directions**  
**Maps settings**

Use this application to pinpoint the location of your phone, search for places, or get directions.

## Use Google maps

Google Maps lets you track your current location and receive detailed directions to your destination. It also provides a search tool where you can locate places of interest or an address on a map, or view locations at street level.

- On the home screen or list menu, tap  **Maps**.



- find an address or place
- Map settings
- Get directions
- Show your location


## Find a location

### Turn on or off location service

In order to find your location on your phone, you need to enable location service.

- Go to  **Settings > Location**.
- Switch **Location** to **On**.

## Find your location

- On the Maps screen, tap  to find your location on the map.




If you are in an area where there are a lot of surrounding buildings, Locations may have a hard time pinpointing your location.



**Use Google maps**  
**Find a location**  
**Search for a place**  
**Get directions**  
**Maps settings**


## Search for a place

You can search for a name of an establishment, street, or city. Suggested matches will be shown while you type.


1. On the Maps screen, tap .
2. Enter the place you want to search for.
3. Select the desired place in the result list.

## Get directions

Get detailed directions to where you want to go.

1. On the Maps screen, tap  to get directions.
2. Enter your start point and end point.
3. Select the desired place in the result list.
4. Choose how you want to get to your destination.
5. The map opens showing the route to your destination.

## Maps settings

You can set up the Google Maps, tap  > **Settings** while viewing the maps.




Google search

Alarm

Calendar

## Google search

Use this application to search not only the Internet, but also apps and contents on your phone.



- On the home screen or list menu, tap  **Google**.

## Search on the web or your phone

1. Tap the search field, and then enter a keyword.
2. Select one of the suggested keywords that appear.

## Search with your voice




Use Google Voice Search to find information on the web just by speaking to your phone.

1. On the home screen or list menu, tap  **Voice search**.
  - If the Google search bar is available on the Home screen, you can also tap .
2. Speak a keyword or phrase when **Speak now** appears on the screen.
3. Select one of the suggested keywords that appear.
4. If what you are searching for is in the list, tap the item to open it in its compatible app. Otherwise, tap **Retry** to search again.

## Alarm

You can set up one or more alarms.

### Set an alarm



1. On the home screen or list menu, tap  **Clock**.
1. On the clock screen, tap .
2. Tap  to add a new alarm.
3. Set the alarm time, and then tap **Done**.
4. If you want the alarm for multiple days, tap **Repeat**.

### Turn off an alarm


- Select the alarm, and drag the check button to **Off**.

### Stop an alarm

When the alarm sounds,

- Slide to : the alarm stops.
- Slide to : the alarm will sound again after a specific length of time.

### Delete an alarm

- Tap the alarm, and then tap .





Google search  
Alarm  
Calendar

## Calendar

You can create events and make plans on your calendar.


### Create an event

1. On the home screen or list menu, tap  **Calendar**.
2. Select a date, and then tap  > **New event**.
3. Edit reminder settings.
4. Tap **Done** to save the event.


### Manage your events

#### Edit an event

You can only edit events you have created.

1. While viewing your calendar, tap the event you want to edit.
2. Tap , and then make changes to the event.
3. Tap **Done**.

#### Delete an event

- Select the event you want to delete, and then tap .



# Specifications



Octa core 1.7GHz



RAM 1GB + 16GB eMMC



Android™ 4.4 (KitKat®)



5" HD IPS  
Dragontrail OGS  
1280\*720



5MP AF + 13MP AF



UMTS: 900/2100MHz  
GSM: 850/ 900 /1800  
/1900MHz



Wi-Fi (802.11 b/g/n)3G,  
Bluetooth 4.0



GPS, A-GPS



2300 mAh



142.5\*70.8\*8.3 mm (H\*W\*D)



129 g



# Troubleshooting



## **The phone does not switch on**

Remove/reinstall the battery. Then charge the phone until the battery icon stops scrolling. Unplug the charger and try to switch the phone on.

## **The display shows IMSI failure**

This problem is related to your subscription. Contact your operator.

## **The network symbol is not displayed**

The network connection is lost. Either you are in a radio shadow (in a tunnel or between tall buildings) or you are outside the network coverage area. Try from another place, try to reconnect to the network (especially when abroad), or contact your network operator for assistance/information.

## **The touch screen responds slowly or improperly**

If your device has a touch screen and the touch screen is not responding properly, try the following:

- Remove any protective covers from the touch screen. Protective covers may prevent the device from recognizing your inputs and are not recommended for touch screen devices.
- Ensure that your hands are clean and dry when tapping the touch screen.
- Restart your device to clear any temporary

software bugs.

- Ensure that your device software is upgraded to the latest version.
- If the touch screen is scratched or damaged, take it to your local dealer.

## **Your battery seems to over heat**

You might be using a charger that was not intended for use with your phone. Make sure you always use the authentic accessory shipped with your phone.

## **You can not send text messages**

Some networks do not allow message exchanges with other networks. First check that you have entered the number of your SMS centre, or contact your operator for detailed information on this subject.

## **You feel that you have missed some calls**

Check your call divert options.

## **The display shows SIM failure**

Check that the SIM card has been inserted correctly. If the problem persists, your SIM card may be damaged. Contact your operator.



#### **Your phone is not charging**

If the battery is completely flat, it might take several minutes of precharge (up to 5 minutes in some cases) before the charging icon is displayed on the screen.

#### **The picture captured with the phone camera is not clear**

Make sure that the camera lens on both sides is clean.

#### **Your device freezes or has fatal errors**

If your device freezes or hangs, you may need to close programs or reset the device to regain functionality. If your device is frozen and unresponsive, remove the battery and try to switch the phone on. The device reboots automatically. If this does not solve the problem, perform a factory data reset. On the list menu, tap **Settings > Backup & reset > Factory data reset**.

#### **Others cannot hear you speaking on a call**

- Ensure that you are not covering the built-in microphone.
- Ensure that the microphone is close to your mouth.
- If using a headset, ensure that it is properly

connected.

#### **Another Bluetooth device is not located**

- Ensure that the Bluetooth wireless feature is activated on your device.
- Ensure that the Bluetooth wireless feature is activated on the device you wish to connect to, if necessary.
- Ensure that your device and the other Bluetooth device are within the maximum Bluetooth range (10 m).