

MX-4 唱机信号放大器

一、开箱与检查

请小心的打开MX-4的外盒，将信号放大器取出。请不要丢弃任何的包装材料！如果有任何物品缺失或损坏，请立即联系经销商或者直接联系ALCTRON。

物品清单：

1. MX-4硬件放大器
2. 电源适配器
3. 说明书与质量保证书

MX-4是一台唱机信号放大器，有着非常坚固的外部结构。请按照本手册说明操作放大器，它能给您带来许多出众的音质表现。

二、产品介绍

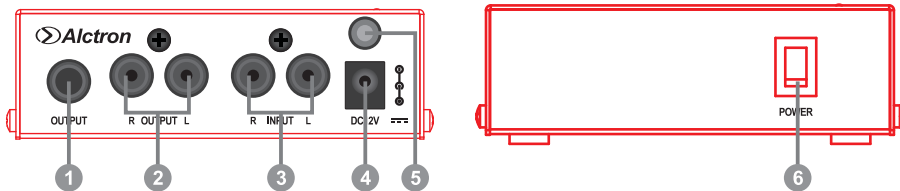
MX-4 是一款唱机信号放大器，能够将您的播放输出音质放大到一个合理线性电平范围。双RCA输入，双RCA和一个立体声6.35接口输出。音频工程师要得到最佳电平信号的关键是要得到最合理的声源，MX-4能够帮助您在连接其他设备（如调音台、功放或其他录音设备）之前处理好唱机输出电平信号。

* 放大类型：晶体管放大

* 模拟信号输入：1 x 立体声RCA

* 模拟信号输出：1 x 立体声RCA，1 x 6.35立体声

三、面板描述



①. 输出：6.35立体声输出接口，连接其他带有立体声输入接口的设备（如功放、调音台或者录音设备）。

②. 输出（L+R）：RCA立体声输出接口，连接其他带有立体声输入接口的设备（如功放、调音台或者录音设备）。

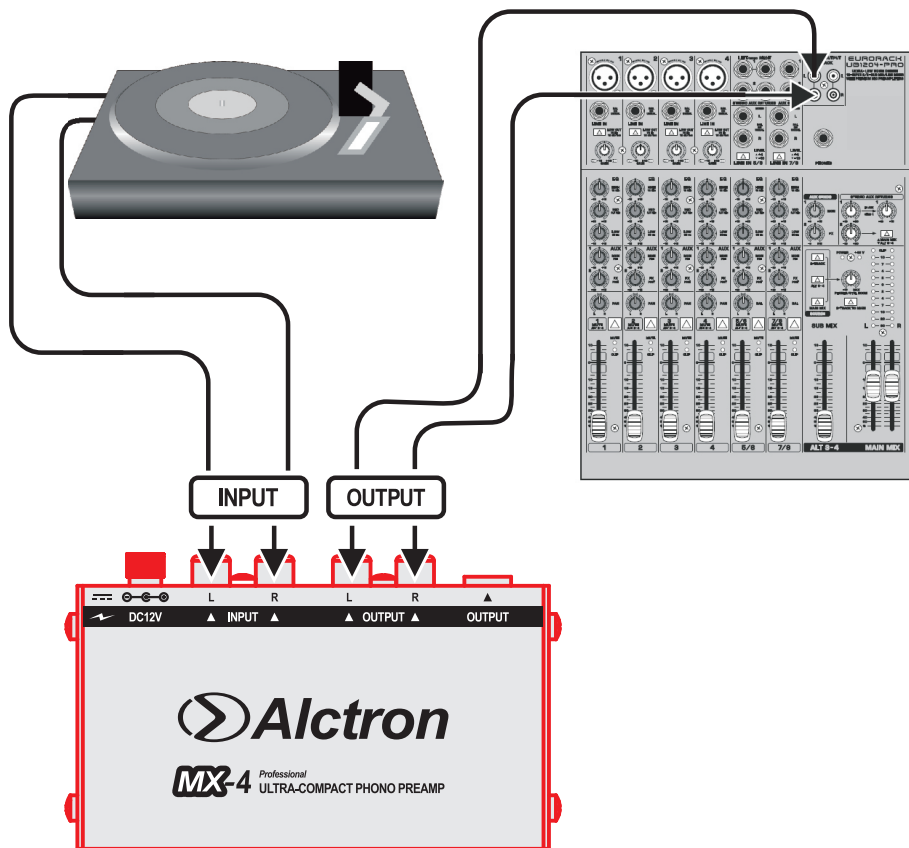
③. 输入（L+R）：RCA立体声输入接口，连接其他带有立体声输出接口的唱机。

④. 电源输入接口：12-16V直流电源适配器。

⑤. 接地连接：用于连接唱机接地。

⑥. ON/OFF开关：用于开启或关闭此唱机放大器。

四、功能连接运用



五、保修

如果您的MX-4信号放大器需要维修，请按照以下说明操作。

- ①. 请确保不是因为操作不当或外部设备所造成。
- ②. 请保存好我们的说明书，返修的时候不必把说明书寄回给我们。
- ③. 返修的时候请用产品原来的包装箱来包装，这是非常重要的。如果你已丢失原包装，请确保您正确包装和保护好本机。ALCTRON是不负责由于非原厂包装造成任何损害。
- ④. 运送到ALCTRON技术支持中心或当地的授权经销商。

Alctron公司始终尽力确保最高的质量水平。必要的修改将不预先通知予以实行。因此产品的技术数据和外观可能与所述说明或插图有不同之处，敬请谅解。

宁波市鄞州奥创电子有限公司 地址：浙江省宁波市鄞州区秀丰工业区三成路76号 电话：++86 574 88009874
传真：0574-87157176 邮箱：sales@alctron-audio.com 网址：http://www.alctron-audio.com
全国统一服务热线：4000-160-112

MX-4 Professional Mini Phono Preamp

1. UNPACKING AND INSPECTION

Carefully unpack your MX-4 phono preamp. Do not discard any packing materials! If anything is missing or damaged, contact your dealer or Alctron immediately.

Items included with the EQ73a are:

- MX-4 phono preamp
- Power adapter
- Set of instructions

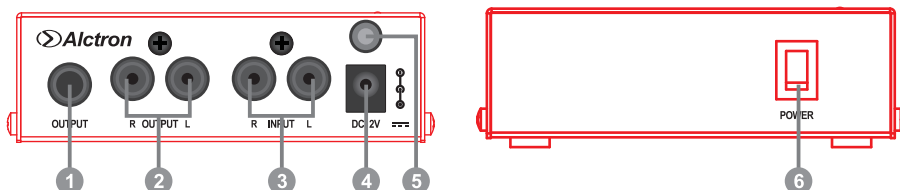
The MX-4 is a phono preamp of exceptional sonic clarity and rugged construction. When used in accordance with the guidelines in this manual it will give you many years of outstanding performance.

2. GENERAL DESCRIPTION

The MX-4 is a phono preamp which bring your record player's output up to proper line level, one pair of RCA inputs, and outputs on both RCA and stereo 1/4" connectors. Engineers know that optimizing the signal levels is the key to getting the most out of any sound system, MX-4 help your record player play nicely with the rest of your gear.

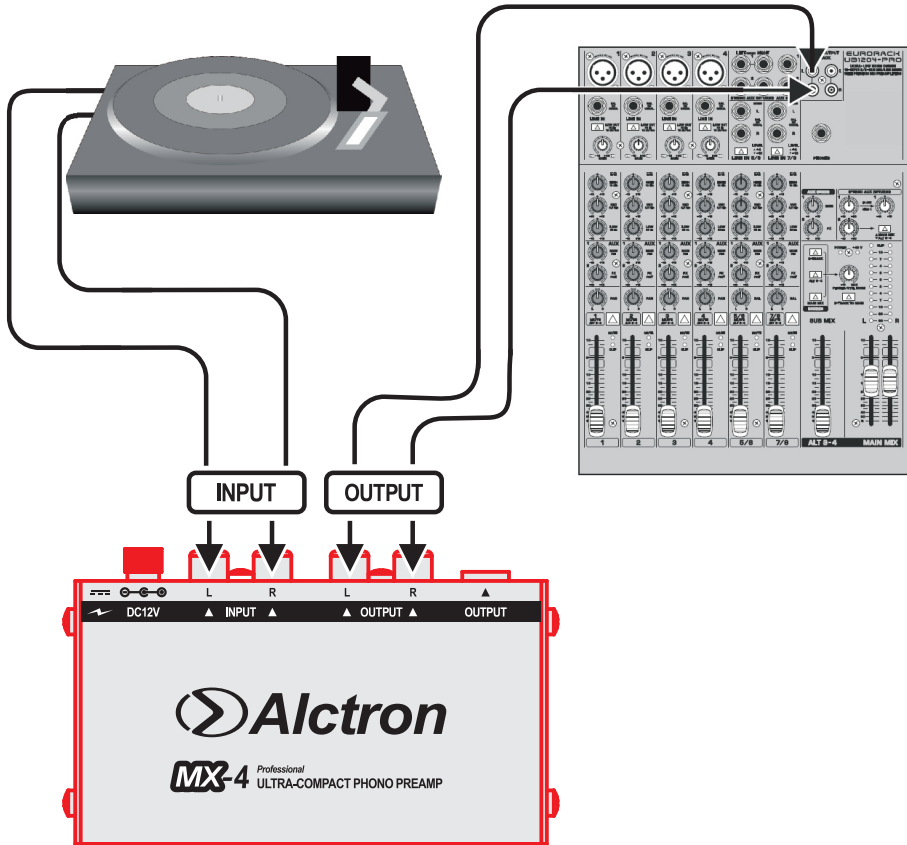
- * Preamp Type: Solid State
- * Number of Channels: 1
- * Analog Inputs: 1 x stereo RCA
- * Analog Outputs: 1 x stereo RCA, 1 x 1/4"

3. TOP PANEL / FRONT



- ①. OUTPUT: 1/4" Tip-Ring-Sleeve jack for connection to a stereo amplifier,mixer or recording unit.
- ②. OUTPUT(L+R): Stereo RCA jacks for connection to a stereo amplifier,mixer or recording unit.
- ③. INPUT(L+R): Stereo RCA jacks for connection to the phono player.
- ④. POWER INPUT: 12 - 16 Volts DC, tip negative jack.
- ⑤. GROUND CONNECTOR: Connects to the Ground of the phono player.
- ⑥. ON/OFF SWITCH:Control the MX-4 is working or not.

4. HARDWARE CONNECTIONS



5. SERVICE

If your HP280 Headphone needs servicing, follow these instructions.

1. Ensure the problem is not related to operation error or external system devices.
2. Keep this owner's manual. We don't need it to repair the unit.
3. Pack the unit in its original packaging including end card and box. This is very important. If you have lost the packaging, please make sure you have packed the unit properly. ALCTRON is not responsible for any damage that occurs due to non-factory packing.
4. Ship to the ALCTRON tech support center or the local return authorization.

ALCTRON is constantly striving to maintain the highest professional standards. As a result of these efforts, modifications may be made from time to time to existing products without prior notice. Specifications and appearance may differ from those listed or illustrated.