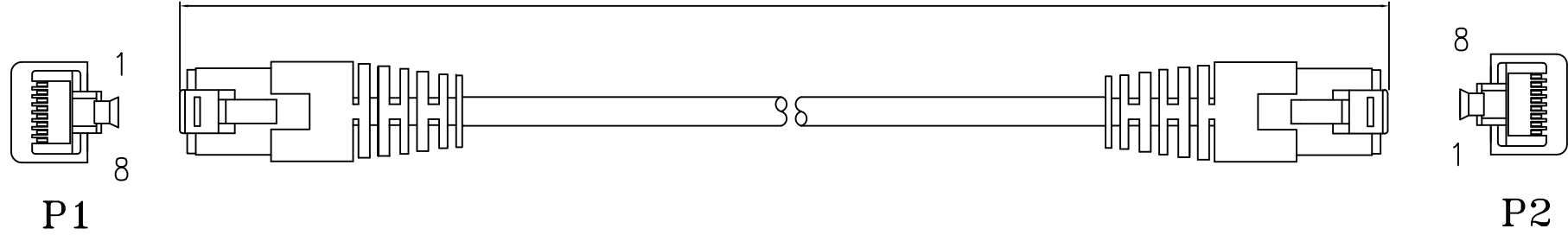


REV.	REVISION DESCRIPTION	DATE
A0	FIRST EDIT	2011/07/27

Length



P1 8P8C	P2 8P8C
1	1 WHITE/ORANGE
2	2 ORANGE
3	3 WHITE/GREEN
6	6 GREEN
4	4 BLUE
5	5 WHITE/BLUE
7	7 WHITE/BROWN
8	8 BROWN
SHELL	SHELL

NOTICE:

- 1) Conductor material : COPPER
- 2) Wire printing: SSTP twisted 4 pairs category 6A cable (stranded)
cablexpert LSZH 8716309HB

CableXpert				
TOLERANCE .0 ± 0.30 .00 ± 0.20 .000 ± 0.10	TITLE: Category 6A SSTP CABLE COPPER (LSZH)			
	PART NO.:		DWG NO.:	
ANGLE .0 $\pm 2^\circ$	SHEET: 1 / 1	SCALE: NONE	UNIT: mm	SIZE: A4
	PROJECTION 		DRAWN:	CHECK:

3	OUTER JACKET	OUTER JACKET COLOR:Y (LSZH)	0.008	Kg
2	RJ45	8P8C PLUG GOLD FLASH PLATED (Transparent ,透明色, 端子4上4下)	2	PCS
1	CABLE	Category 6A SSTP 27#4*[1P(7/0.135 COPPER)+AL]+B(16*4/0.12AM) STRANDED OD:5.9 COLOR:Y LENGTH:xxxxM (LSZH)	1	PC

Category 6A SSTP 27#COPPER Patch Cord List

NO	CableXpert P/N	Description	Color	Length	N.W (kg)
1	PP6A-LSZHCU-0.25M	SSTP CAT6A Patch cord		0.25M	
2	PP6A-LSZHCU-0.5M	SSTP CAT6A Patch cord		0.5M	
3	PP6A-LSZHCU-1M	SSTP CAT6A Patch cord		1M	
4	PP6A-LSZHCU-1.5M	SSTP CAT6A Patch cord		1.5M	
5	PP6A-LSZHCU-2M	SSTP CAT6A Patch cord		2M	
6	PP6A-LSZHCU-3M	SSTP CAT6A Patch cord		3M	
7	PP6A-LSZHCU-5M	SSTP CAT6A Patch cord		5M	
8	PP6A-LSZHCU-7.5M	SSTP CAT6A Patch cord		7.5M	
9	PP6A-LSZHCU-10M	SSTP CAT6A Patch cord		10M	
10	PP6A-LSZHCU-15M	SSTP CAT6A Patch cord		15M	
11	PP6A-LSZHCU-20M	SSTP CAT6A Patch cord		20M	

Color Code: M=Grey, B=Blue, K=Black, G=Green, O=Orange, R=Red, Y=Yellow, P=Pink;

Conductor material : COPPER

Wire printing:SSTP twisted 4 pairs category 6A cable (stranded) cablexpert LSZH 8716309HB

CABLE: Category 6A SSTP 27#4*[1P(7/0.135 COPPER)+AL]+B(16*4/0.12AM) STRANDED OD:5.9 COLOR:Y LENGTH:xxxxM (LSZH)

RJ45:8P8C PLUG GOLD FLASH PLATED (Transparent, 透明色, 端子4上4下)