



Epson Projector Content Manager Operation Guide

Introduction to the Epson Projector Content Manager Software 3

Epson Projector Content Manager Features 4

Setting Up the Software for the First Time 5

Installing the Software 6

System Requirements 6

Installing the Epson Projector Content Manager Software 6

Editing and Exporting Playlists 7

Playlist Editing..... 8

Supported File Types for Playlists..... 8

Converting Movie Files 9

Supported File Types for Movie Conversion 9

Saving Playlists to a Project 9

Adding Effects to a Playlist 14

Customizing Shape Effect Filters for a Playlist 14

Scheduling Playlists..... 17

Exporting a Project to an External Storage Device 19

Solving Problems 20

Solving Epson Projector Content Manager Problems..... 21

Screen Summary 22

Main Screen 23

Project Screen..... 24

Project Screen - Playlists Tab 24

Effect Settings Screen 25

Project Screen - Shape Filter Tab 26

Project Screen - Time Table Tab 27

Appendix 29

Updating and Uninstalling the Software..... 30

Getting the Latest Version of the Software..... 30

Uninstalling the Epson Projector Content Manager Software (Windows 7) 30

Uninstalling the Epson Projector Content Manager Software (Windows 8.1/Windows 10)..... 30

Notices..... 31

Copyright Notice 31

About Notations 31

General Notice..... 31

Copyright Attribution 31

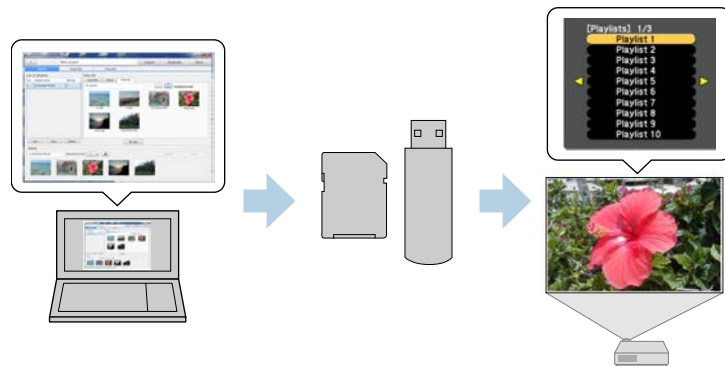
Introduction to the Epson Projector Content Manager Software

See the information here to learn more about the Epson Projector Content Manager software.

► **Related Links**

- "Epson Projector Content Manager Features" [p.4](#)

The Epson Projector Content Manager software allows you to add images and movies to playlists, and save them on an external storage device. Inserting the storage device into the projector, you can easily project your playlist content without using a cable connection.



» Related Links

- "Saving Playlists to a Project" [p.9](#)
- "Adding Effects to a Playlist" [p.14](#)
- "Scheduling Playlists" [p.17](#)



Depending on the projector, the supported storage devices differ. See your projector *User's Guide* for details.

You can use a variety of playlist control functions as necessary.

- Adding effects to a playlist
You can add effects such as intervals, transitions, loop playback, brightness, and color and shape effect filters to a playlist. You can also customize the shape effect filters.
- Scheduling playlists
You can specify when each playlist starts and finishes. Scheduled playlists begin automatically. This feature is useful when you want to periodically repeat the same playlist.
- Simultaneous playback
You can play the same playlist at the same time on multiple projectors.



This function is available only for supported models. See your projector *User's Guide* for details.

Setting Up the Software for the First Time

Follow these instructions to install the Epson Projector Content Manager software.

► **Related Links**

- "Installing the Software" [p.6](#)

Check the system requirements necessary to run the software, and then install the software.



- If the language selected for the installation differs from the language of the operating system being used, the screens may not display correctly.

► **Related Links**

- "System Requirements" [p.6](#)
- "Installing the Epson Projector Content Manager Software" [p.6](#)

System Requirements

Your computer must meet the following system requirements to use the Epson Projector Content Manager software.

Operating system	Windows 7 <ul style="list-style-type: none"> • Ultimate (32- and 64-bit) • Enterprise (32- and 64-bit) • Professional (32- and 64-bit) • Home Premium (32- and 64-bit) • Home Basic (32-bit)
	Windows 8.1 <ul style="list-style-type: none"> • Windows 8.1 (32- and 64-bit) • Windows 8.1 Pro (32- and 64-bit) • Windows 8.1 Enterprise (32- and 64-bit)
	Windows 10 <ul style="list-style-type: none"> • Windows 10 Home (32- and 64-bit) • Windows 10 Pro (32- and 64-bit) • Windows 10 Enterprise (32- and 64-bit)
CPU	Intel Core i5 or faster (Intel Core i7 or faster recommended)

Memory	2 GB or more (16GB or more recommended)
Hard disk space	2 GB or more
Display	Resolution between 1280 × 800 or 1366 × 768 (WXGA) and 1920 × 1200 (WUXGA) 32-bit color or greater

Installing the Epson Projector Content Manager Software

Download and install the Epson Projector Content Manager software on your computer.

Visit <http://www.epson.com> to download the latest version of the Epson Projector Content Manager software.



- You need administrator authority to install the Epson Projector Content Manager software.
- You need to install Microsoft .NET Framework 4.5 before installing the Epson Projector Content Manager software.

- 1** Download the latest version of the Epson Projector Content Manager software.
- 2** Double-click **EPCM_Setup.exe** to start the installer.
- 3** Follow the on-screen instructions.

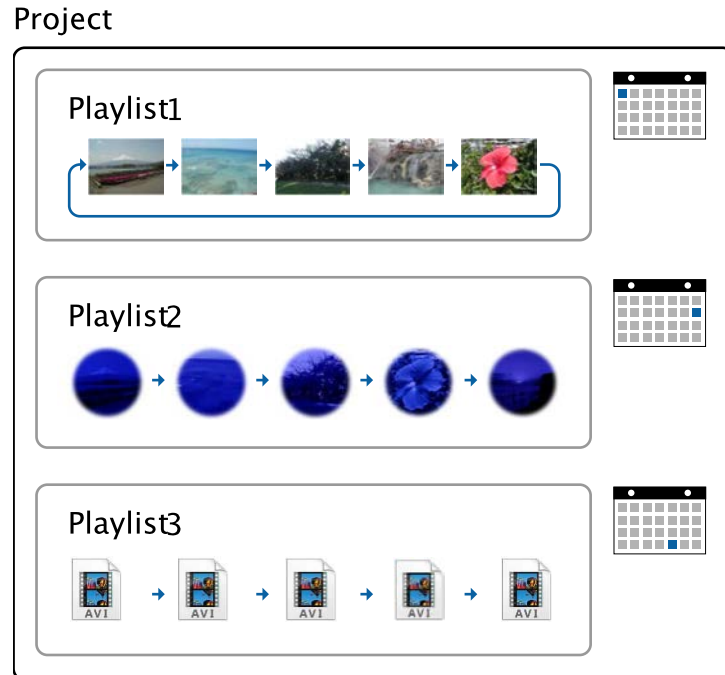
Editing and Exporting Playlists

Follow these instructions to edit playlists and export them to an external storage device. You can then insert the device into the projector and project playlists from the device.

► Related Links

- "Playlist Editing" [p.8](#)
- "Exporting a Project to an External Storage Device" [p.19](#)

You can create playlists combining images and movies however you like. You can also add effects to the playlists and schedule when they should play. Multiple scheduled playlists can be saved in one project.




» **Related Links**

- "Supported File Types for Playlists" [p.8](#)
- "Converting Movie Files" [p.9](#)
- "Saving Playlists to a Project" [p.9](#)
- "Adding Effects to a Playlist" [p.14](#)
- "Scheduling Playlists" [p.17](#)

Supported File Types for Playlists

You can use these types of files for playlists.

File contents	File type (extension)	Details
Image	.jpg	Make sure the file is not: <ul style="list-style-type: none"> • CMYK format • Progressive format • Highly compressed • Above 8192 × 8192 resolution
	.bmp	Make sure the file is not: <ul style="list-style-type: none"> • Above 1280 × 800 resolution
	.gif	Make sure the file is not: <ul style="list-style-type: none"> • Above 1280 × 800 resolution • Animated • Interlaced
	.png	Make sure the file is not: <ul style="list-style-type: none"> • Above 1280 × 800 resolution • Interlaced
Movie	.avi (Motion JPEG)	Supports only AVI 1.0. Make sure the file is not: <ul style="list-style-type: none"> • Saved with an audio codec other than LPCM • Above 1280 × 800 resolution • Less than 320 × 240 resolution • Larger than 2 GB

 If your movie file type is not supported, you can convert the file to a supported file type using the Epson Projector Content Manager software.

» **Related Links**

- "Converting Movie Files" [p.9](#)

Converting Movie Files

If your movie file type is not supported, you can convert the file to a supported file type.

- 1** Start the Epson Projector Content Manager software.
 - Windows 7: Click **Start**, select **Programs** (or **All Programs**), **EPSON Projector**, and then click **Epson Projector Content Manager Ver.X.XX**.
 - Windows 8.1: Navigate to the **Apps** screen and select **Epson Projector Content Manager Ver.X.XX**.
 - Windows 10: Select **Start**, **EPSON Projector**, and then select **Epson Projector Content Manager Ver.X.XX**.

- 2** Select the **Video convert** tab.

- 3** Drag and drop the target movie files, specify the **Image quality settings** and **Output path**, and then click the **Start** button.

The conversion starts.

When the conversion is complete, the output file is saved to the location you chose.

» Related Links

- "Supported File Types for Movie Conversion" [p.9](#)

Supported File Types for Movie Conversion

You can convert these types of movie files to the supported types.

Movie file format	File type (extension)	Details
MP4	.mp4 (MPEG-4 ASP, H.264/MPEG-4 AVC *)	Make sure the file is not: <ul style="list-style-type: none"> • Saved with an audio codec other than MPEG-4, AAC-LC, or LPCM • Above 1920 × 1080 resolution • Less than 320 × 240 resolution • Larger than 30 fps
WMV	.wmv (WMV9)	Make sure the file is not: <ul style="list-style-type: none"> • Saved with an audio codec other than WMA9 • Above 1920 × 1080 resolution • Less than 320 × 240 resolution • Larger than 30 fps

* High Profile version or earlier is supported.



- If the movie files contain only sound data, converting fails.
- Files that Windows Media Player 12 cannot play are not supported.
- If the input file resolution is above 1280 × 800, the output file is resized to fit the resolution.
- If the output file size is larger than 2 GB, the output file is split into multiple files.

Saving Playlists to a Project

You can create playlists and save them to a project that you can export to an external storage device.

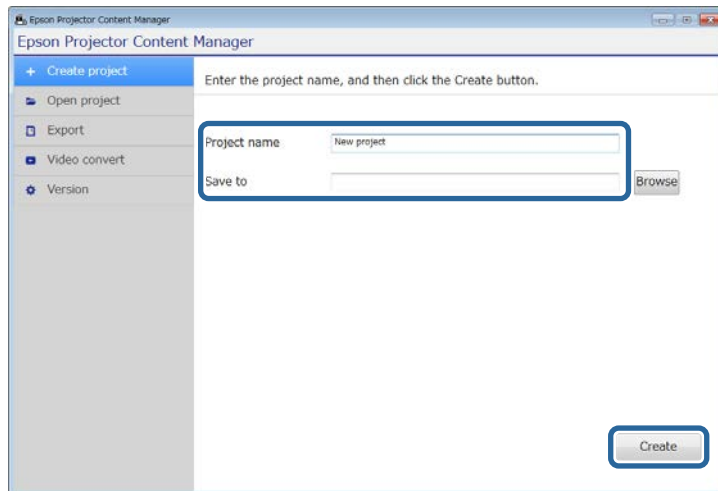
- 1** Start the Epson Projector Content Manager software.
 - Windows 7: Click **Start**, select **Programs** (or **All Programs**), **EPSON Projector**, and then click **Epson Projector Content Manager Ver.X.XX**.

- Windows 8.1: Navigate to the **Apps** screen and select **Epson Projector Content Manager Ver.X.XX**.
- Windows 10: Select **Start**, **EPSON Projector**, and then select **Epson Projector Content Manager Ver.X.XX**.

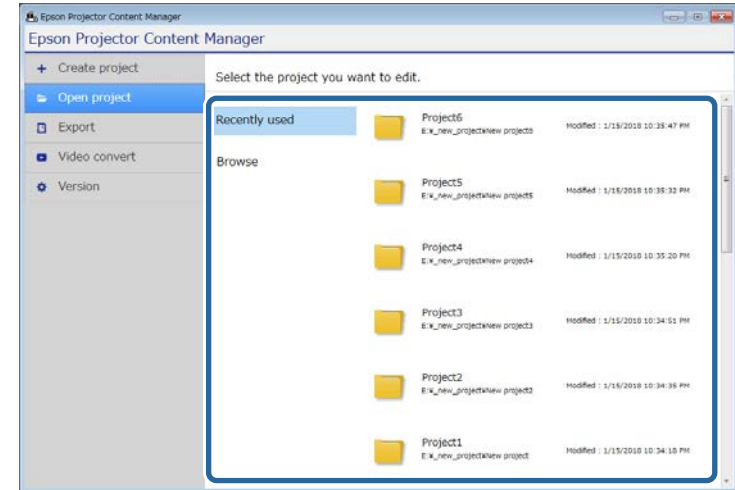
The main screen is displayed.

2 Do one of the following:

- If you are creating a project for the first time, enter a project name and specify the location in which to save it in the **Create project** tab, and click the **Create** button.




- If you want to select a project you have created previously, select the **Open project** tab and select the project by browsing the folders or using the recently used project list.

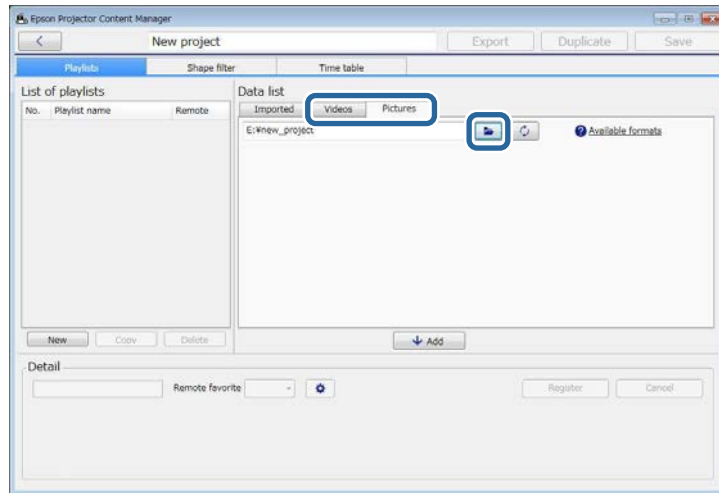


The project screen is displayed.

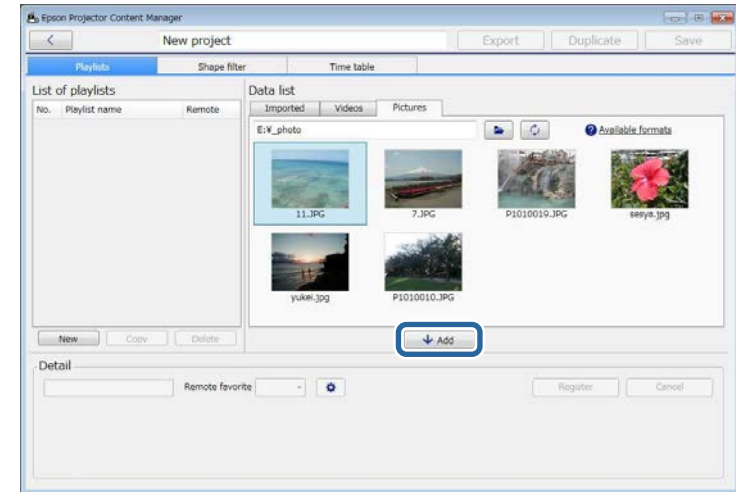
3 Select the folder containing the images or movie files you want to add to the playlist.



- To add images, click  in the **Pictures** tab in the **Data list** area and select the folder.

- To add movies, switch to the **Videos** tab, click  and select the folder.



- In the **Data list** area, select an image in the **Pictures** tab or movie in the **Videos** tab and click the **Add** button to add it to the playlist.




 In the **Select the folder** screen displayed after clicking , only folders are displayed; you cannot see any files in the folders.

- To view information about the supported file type, hover the mouse pointer over **Available formats**.


All images or movies stored in the folder are displayed in the **Data list** area.


The selected file is displayed in the **Detail** area.

 The selected files will be listed in the **Imported** tab of the **Data list** area after you click the **Register** button.

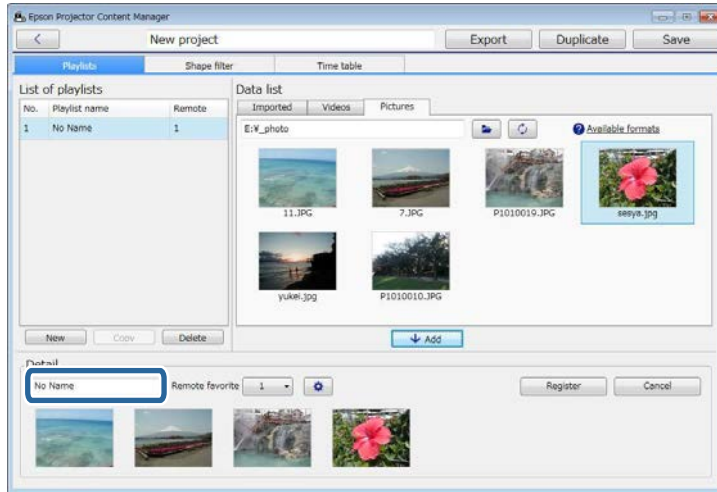
- You can also add files to the playlist by dragging and dropping them.

- Repeat step 3 and 4 as needed to add more files.

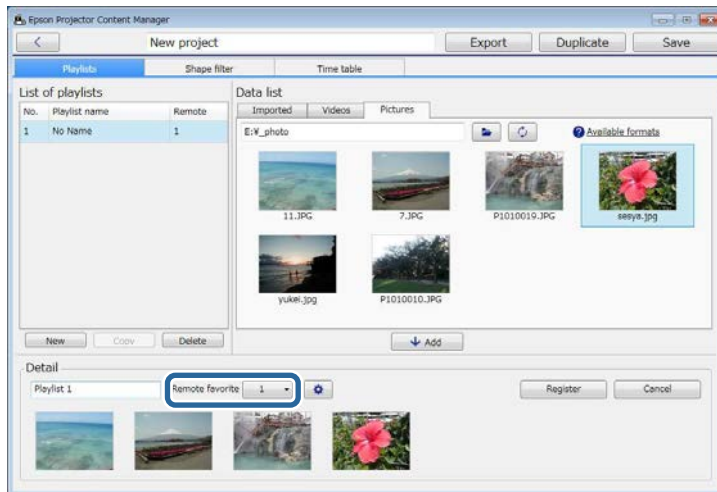
 To change the display order of files in the playlist, drag and drop them into the desired order in the **Detail** area.


- To delete a file from the playlist, hover the mouse pointer over the file and click  displayed on the file.

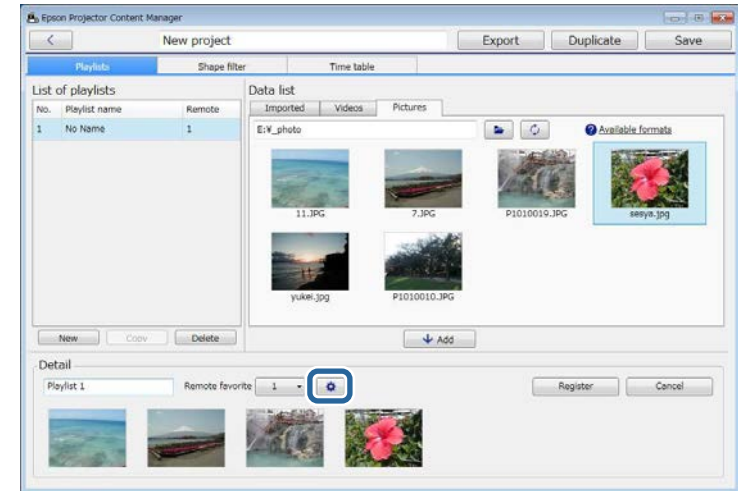
6 Edit the playlist name in the **Detail** area if necessary.



7 If you want to assign a specific number to the playlist, you can select it as the **Remote favorite** setting. This lets you start the playlist directly by pressing the corresponding numeric button on the projector's remote control.

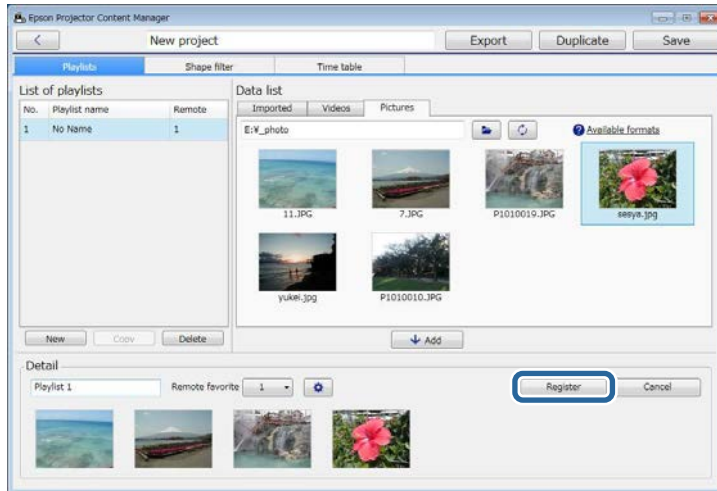



8 Click  to display the **Effect settings** screen and add effects to the playlist.



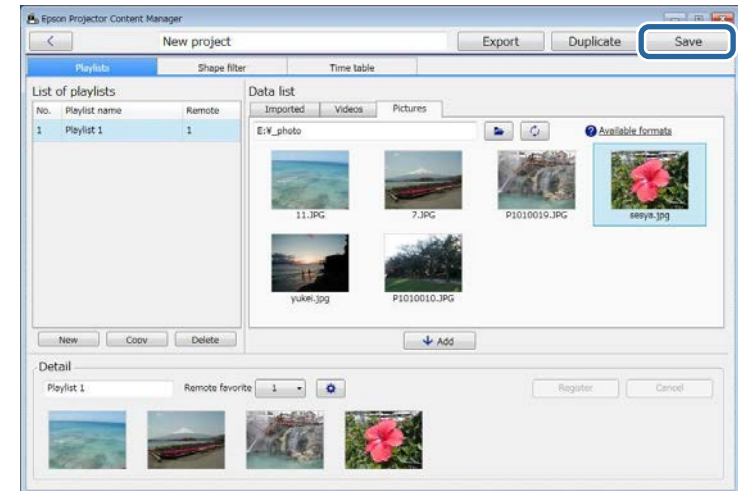
9 Click **OK** in the **Effect settings** screen to reflect the effect settings to the playlist.

10 Click the **Register** button to save the playlist.

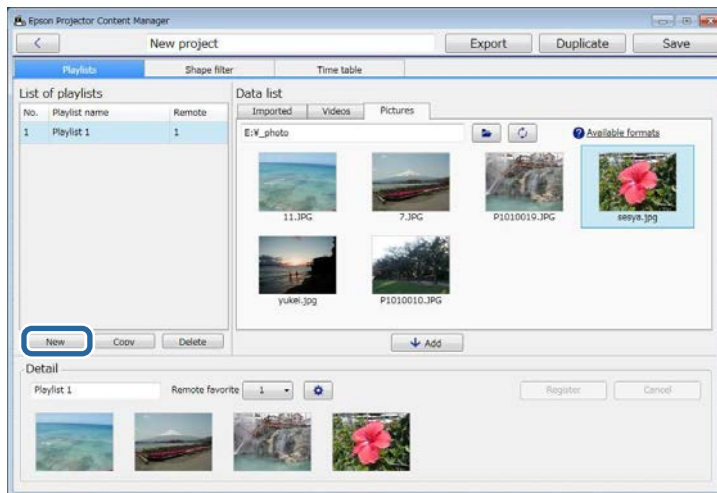


 You can reorder playlists in the project by dragging and dropping them in the order you want in the **List of playlists** area.

12 When you finish adding and editing all the playlists in your project, click the **Save** button to save the project.



11 If you want to create multiple playlists and add them to the same project, click the **New** button to add a new playlist. Repeat steps 3 through 10 for each playlist you create.




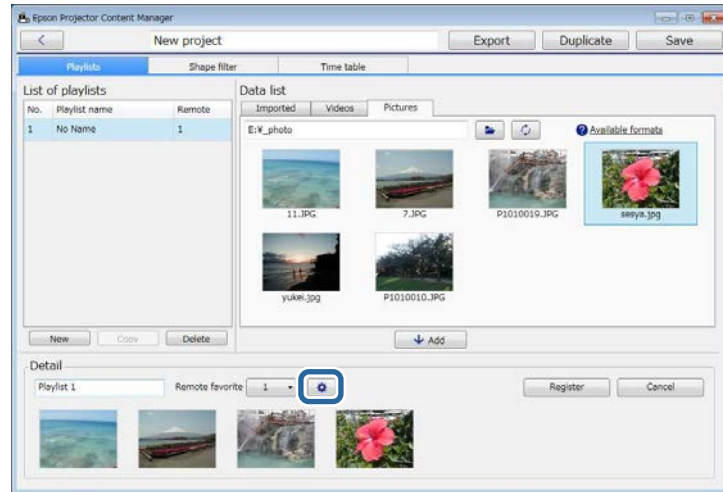
The project is saved and you return to the main screen.

► **Related Links**

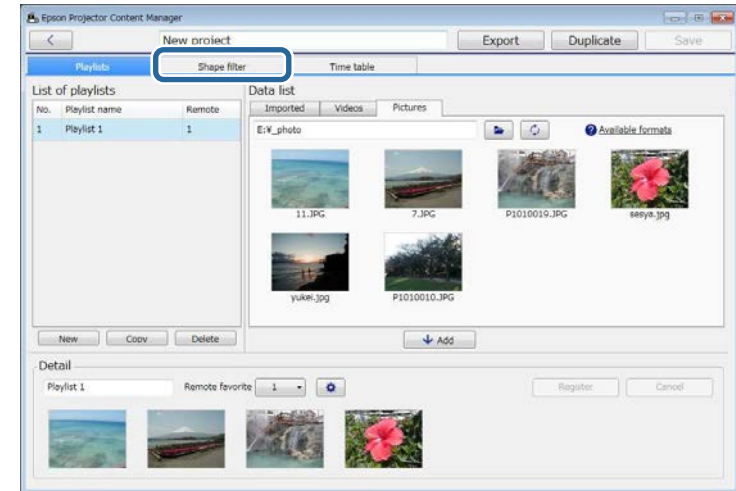
- "Supported File Types for Playlists" [p.8](#)
- "Project Screen" [p.24](#)
- "Effect Settings Screen" [p.25](#)
- "Adding Effects to a Playlist" [p.14](#)
- "Scheduling Playlists" [p.17](#)

Adding Effects to a Playlist

You can select effects for a playlist in the **Effect settings** screen. To display the **Effect settings** screen, click  on the project screen.



3 Select the **Shape filter** tab.



4 Select one of the filters named **Custom 1** to **Custom 4** in the **Filter list** area.

► Related Links

- "Customizing Shape Effect Filters for a Playlist" [p.14](#)
- "Effect Settings Screen" [p.25](#)

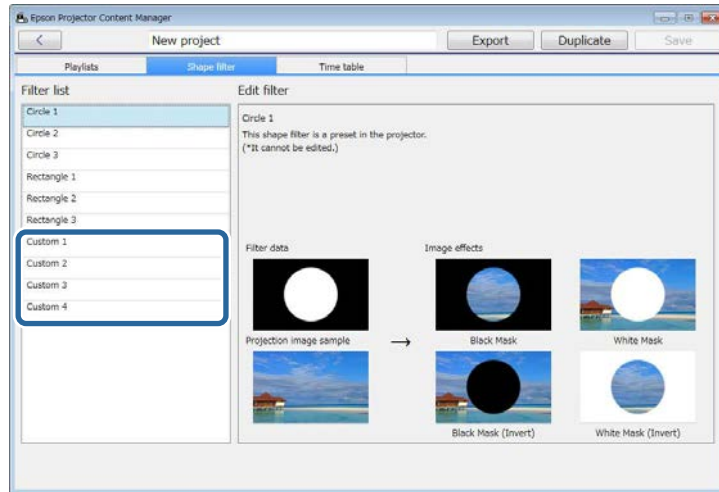
Customizing Shape Effect Filters for a Playlist

You can use your images as shape effect filters and add them to your playlists.

- 1** Select the **Open project** tab in the main screen.
- 2** Select the project by browsing the folders or using the recently used project list.

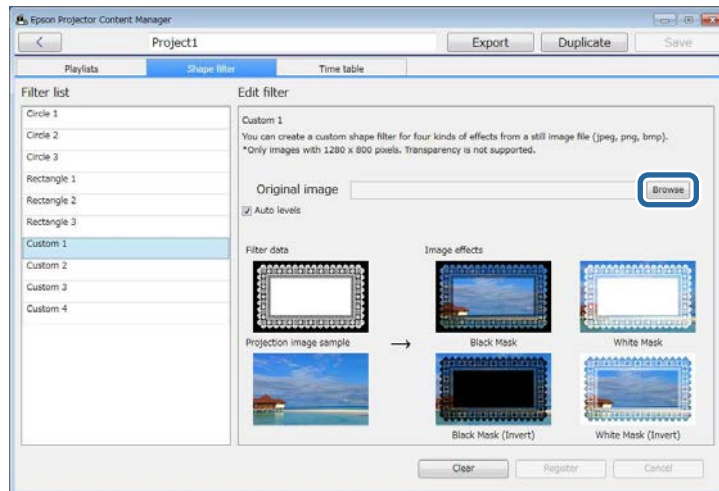


You cannot edit standard filters such as **Circle 1 to Circle 3** and **Rectangle 1 to Rectangle 3**.



5

Click the **Browse** button and select the image file which you want to use as a shape effect filter.



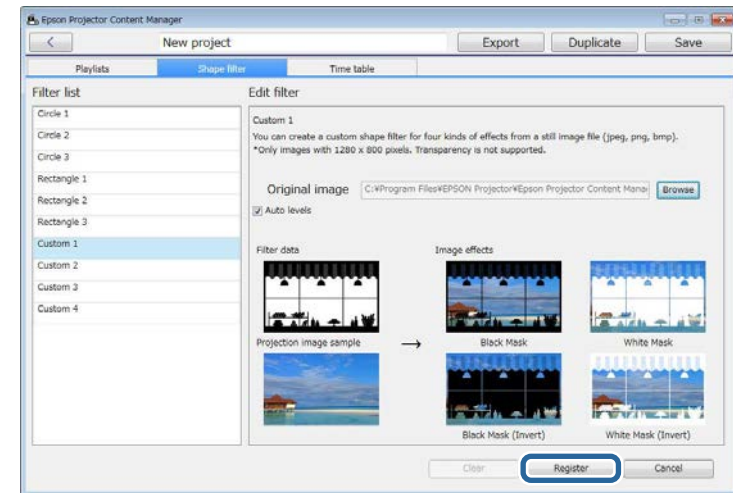
The sample effects images are displayed.



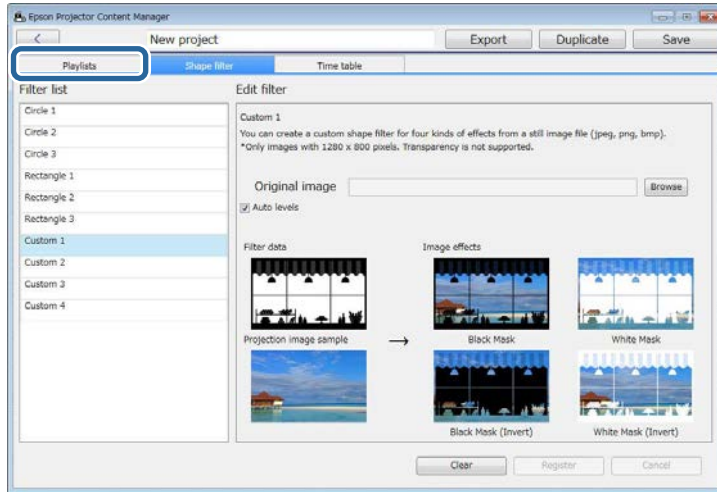
- You can use jpeg, png, or bmp file format.
- Only images with 1280 × 800 pixels are supported.

6

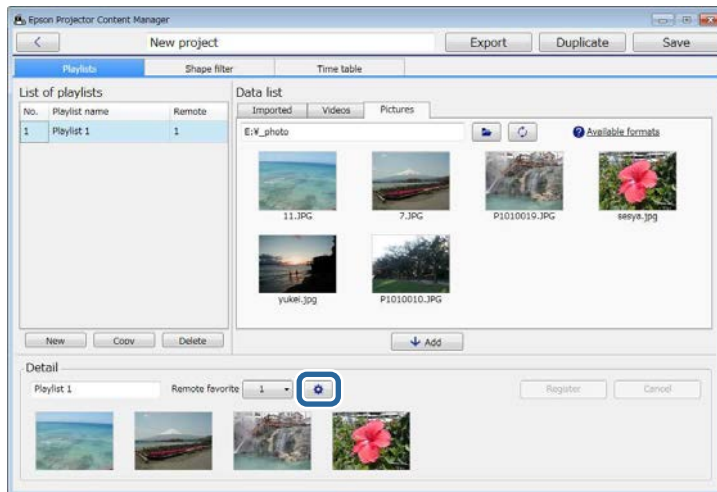
Click the **Register** button to save the shape effect filter settings as the Custom filter in the **Filter list**.



7 Select the **Playlists** tab and select a playlist.

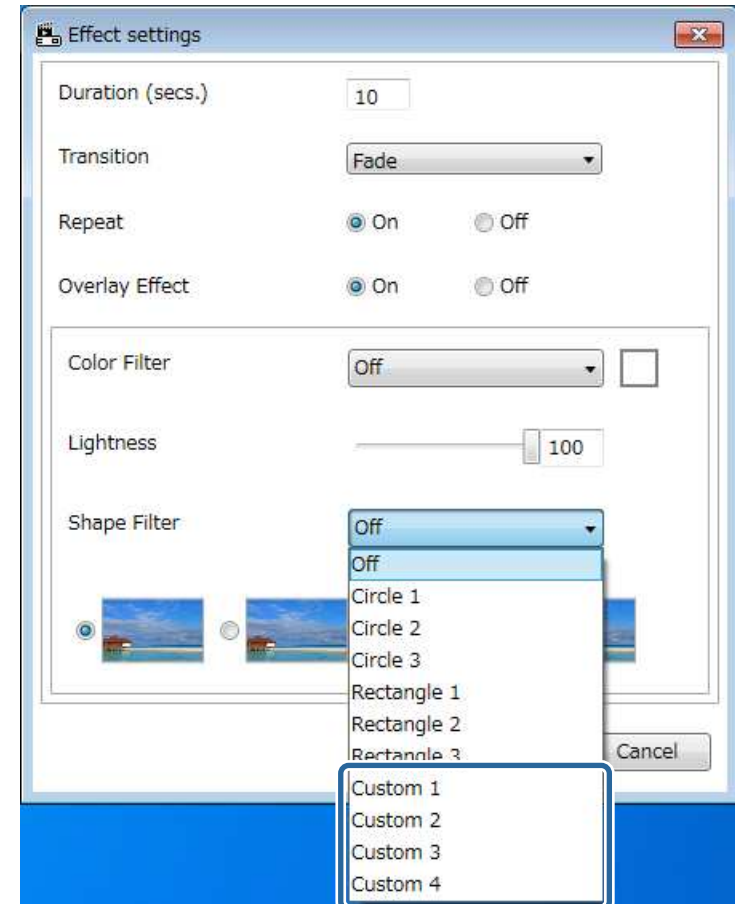


8 Click .



The **Effect settings** screen is displayed.

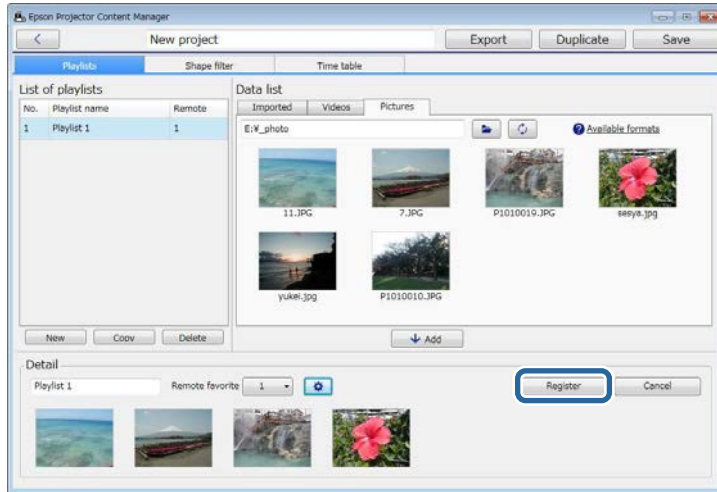
9 Select the target filter name from **Custom 1** to **Custom 4** as the **Shape Filter** setting.



Four types of image effects are displayed.

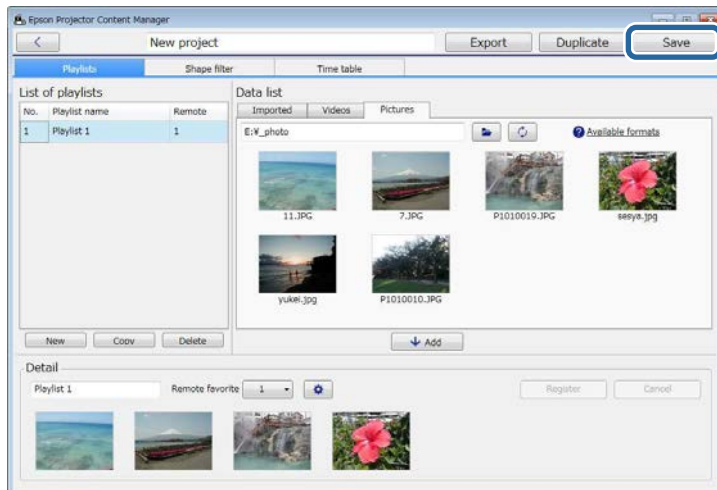
10 Select the image effect you want to use and click **OK**.

- 11** Click the **Register** button to apply the settings to your playlist.



- 12** Repeat steps 7 through 11 if you want to apply shape effect filters to any other playlists.

- 13** Click the **Save** button to close the project.



» **Related Links**

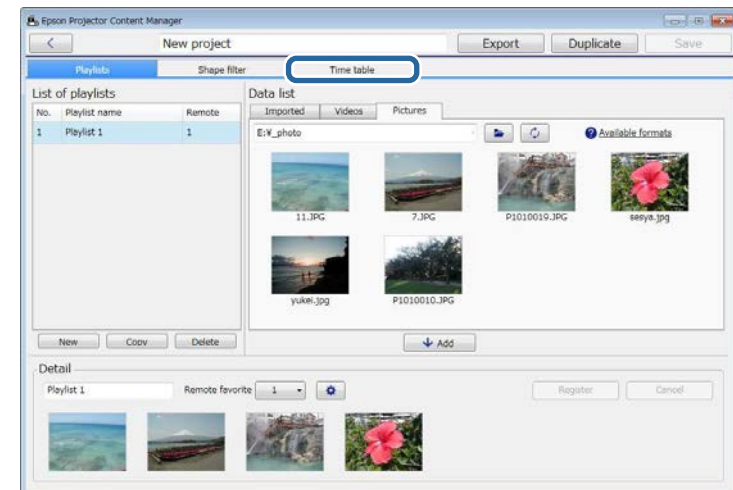
- "Effect Settings Screen" [p.25](#)
- "Project Screen - Shape Filter Tab" [p.26](#)

Scheduling Playlists

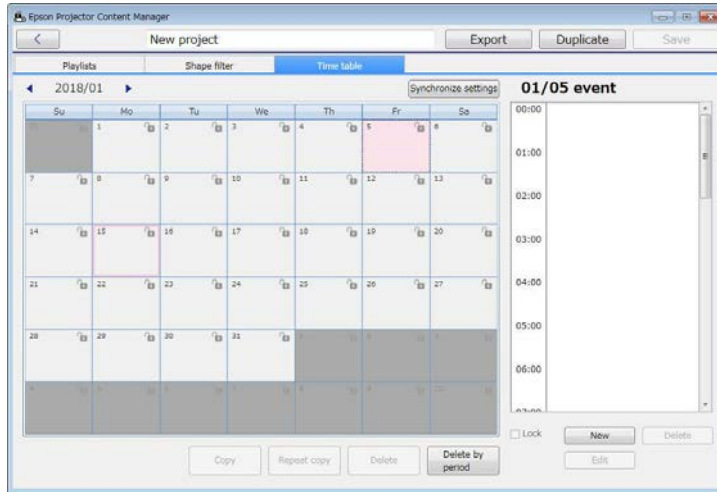
You can specify when each playlist starts and finishes. Scheduling events allows you to:

- periodically repeat the same playlist
- play the same playlist at the same time on multiple projectors (supported models only)

- 1** Select the **Open project** tab in the main screen.
- 2** Select the project by browsing the folders or using the recently used project list.
- 3** Select the **Time table** tab.



4 Double-click the date that you want to schedule events in the calendar.



The **New event** screen is displayed.

5 Select the **Playlist** and **Time** settings, and then click the **Register** button.



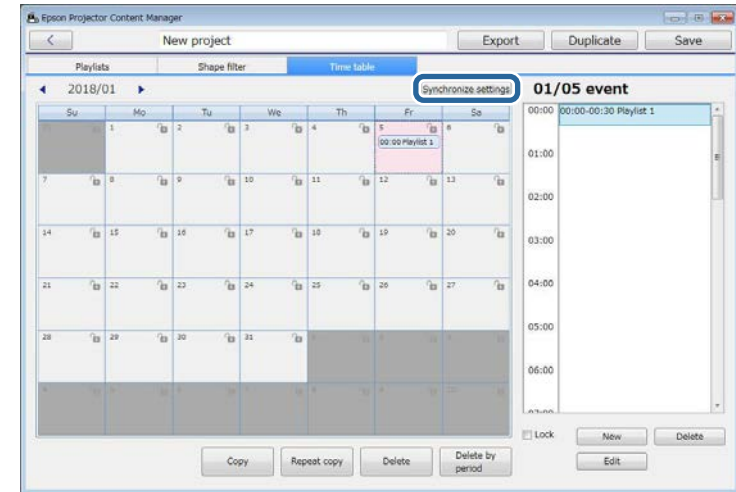
- If you want to copy the event to another day, select the original date and click the **Copy** button. The **Copy** screen is displayed and you can set the target date.
- If you want to repeat the same event over a certain period of time, select the original date and click the **Repeat copy** button. The **Repeat copy** screen is displayed and you can set the target period in which you want to repeat the event and the day(s) within that period.

6 Repeat step 4 and 5 to schedule any other playlists as necessary.

7 When you are using multiple projectors, click the **Synchronize settings** button to share the scheduled events with the other projectors (supported models only).



The **Synchronize settings** setting applies to the entire project, not to individual playlists.



The **Register projector for synchronized playback** screen is displayed.

8 Enter the name of the other projector and click the **Register** button (supported models only).



Make sure the projectors are connected to your network.

9 Click the **Save** button to close the project.



Scheduled events start playing on the timetable you selected. See your projector *User's Guide* for details.

You can export a project that contains playlists to an external storage device.



- Depending on the projector, the supported storage devices differ. See your projector *User's Guide* for details.
- You can export only one project at a time to the same external storage device. If you export an additional project to the same device, the existing project is overwritten.



You can also export the project from the project screen.

You can insert the device containing a project into the projector so you can project playlists from the device.

- 1** Insert an external storage device into your computer.
- 2** Start the Epson Projector Content Manager software.
 - Windows 7: Click **Start**, select **Programs** (or **All Programs**), **EPSON Projector**, and then click **Epson Projector Content Manager Ver.X.XX**.
 - Windows 8.1: Navigate to the **Apps** screen and select **Epson Projector Content Manager Ver.X.XX**.
 - Windows 10: Select **Start**, **EPSON Projector**, and then select **Epson Projector Content Manager Ver.X.XX**.
- 3** Select the **Export** tab in the main screen.
- 4** Select the project by browsing the folders or using the recently used project list.

The **Export** screen is displayed.
- 5** Select the drive in which you inserted your external storage device as the **Export drive** setting and click the **Export** button.

The export starts.
- 6** When the export is complete, click **Close** on the **Export progress** screen.
- 7** Remove the external storage device from your computer.

Solving Problems

See the following section to check for solutions to problems you may have using the Epson Projector Content Manager software.

► **Related Links**

- "Solving Epson Projector Content Manager Problems" [p.21](#)

Try these solutions if you experience any of these problems.

- If you cannot import images, try the following solutions:
 - Check the supported file types.
 - If you are viewing the **Videos** tab, try clicking the **Pictures** tab.
- If you cannot import movies, try the following solutions:
 - Check the supported file types.
 - Convert a movie file type to a type that the projector supports.
 - If you are viewing the **Pictures** tab, try clicking the **Videos** tab.
- If you cannot convert your movie file type to a type that the projector supports, check the supported file types for movie conversion.
- If you cannot delete a playlist in the **List of playlists** area of the project screen, make sure the playlist is not scheduled in the **Time table** tab.
- If you cannot register another projector when using **Synchronize settings**, try the following solutions:
 - Make sure the projector supports this function. See your projector *User's Guide* for details.
 - Make sure the projector is connected to your network. See your projector *User's Guide* for details.
 - Make sure the projector name is correct. See your projector *User's Guide* for details.
- If you cannot export a project to an external storage device, try the following solutions:
 - Make sure the external storage device is not locked.
 - See your projector *User's Guide* for specifications on the type of external storage device.

» Related Links

- "Supported File Types for Playlists" [p.8](#)
- "Converting Movie Files" [p.9](#)
- "Customizing Shape Effect Filters for a Playlist" [p.14](#)
- "Scheduling Playlists" [p.17](#)

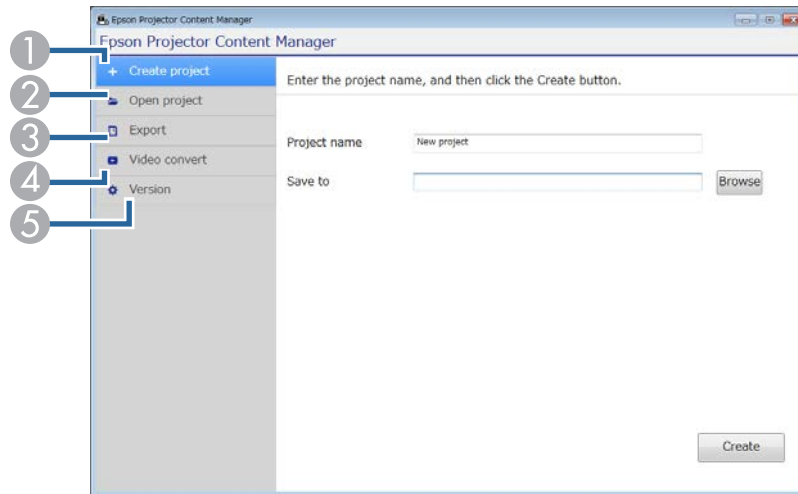
Screen Summary


See these sections for more information about the Epson Projector Content Manager screens.

▶ **Related Links**

- "Main Screen" [p.23](#)
- "Project Screen" [p.24](#)

When you start the Epson Projector Content Manager software, the main screen is displayed.

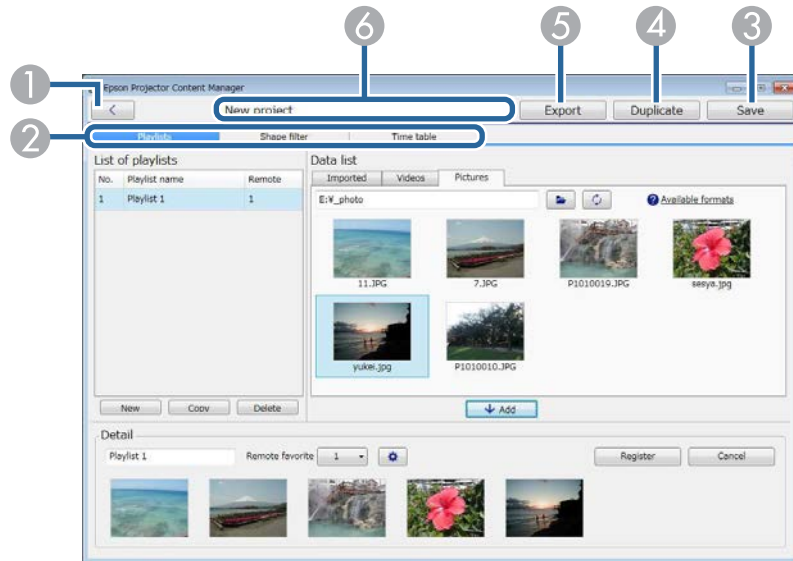


1	Create project	Creates a new project on your computer.
2	Open project	Opens an existing project.
3	Export	Exports the project to an external storage device.
4	Video convert	<p>Converts a movie file type to a type that the projector supports.</p> <div style="border: 1px solid black; padding: 5px; margin-top: 10px;">  <p>You can check the supported file types by hovering the mouse pointer over the Convertible formats in the Video convert tab.</p> </div>
5	Version	Displays the software version.

» **Related Links**

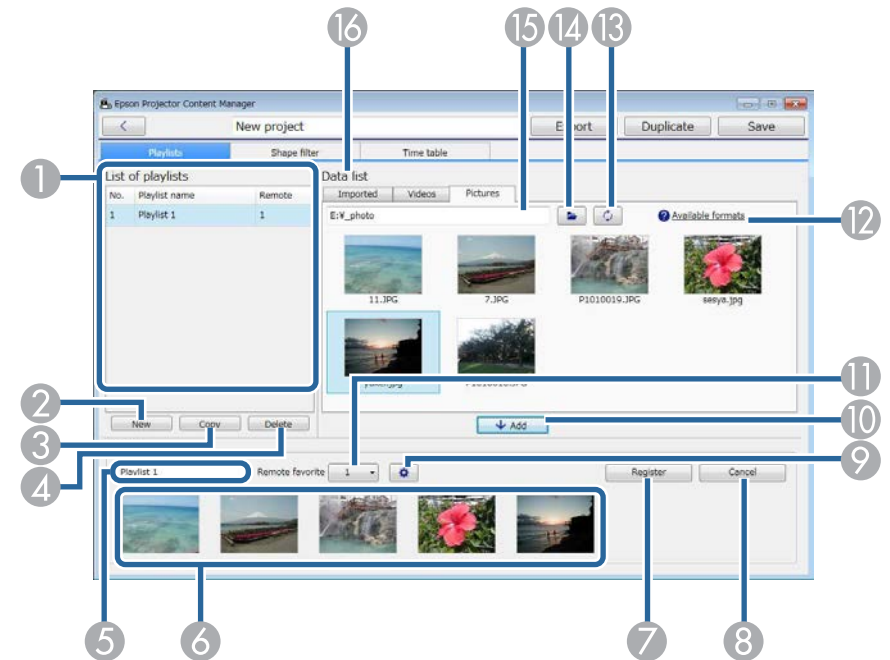
- "Converting Movie Files" [p.9](#)
- "Saving Playlists to a Project" [p.9](#)
- "Exporting a Project to an External Storage Device" [p.19](#)

When you create or open a project, the project screen is displayed.



Project Screen - Playlists Tab

When you click the **Playlists** tab in the project screen, the following screen is displayed.







1		Returns to the main screen.
2	Playlists, Shape filter, and Time table tabs	Switch to different project screen tabs.
3	Save	Saves the project to your computer and returns to the main screen.
4	Duplicate	Duplicates the project.
5	Export	Exports the project to an external storage device.
6	Project name	Displays the project name. You can edit this name.

1	List of playlists	Displays the list of playlists in the project. Select the playlist name to edit the playlist. You can add up to 50 playlists to the project. Remote is the remote control shortcut key assigned to the playlist.
2	New	Creates a new playlist.
3	Copy	Copies the selected playlist.
4	Delete	Deletes the selected playlist.
5	Playlist name	Lets you edit the playlist name.

» Related Links


- "Project Screen - Playlists Tab" [p.24](#)
- "Project Screen - Shape Filter Tab" [p.26](#)
- "Project Screen - Time Table Tab" [p.27](#)

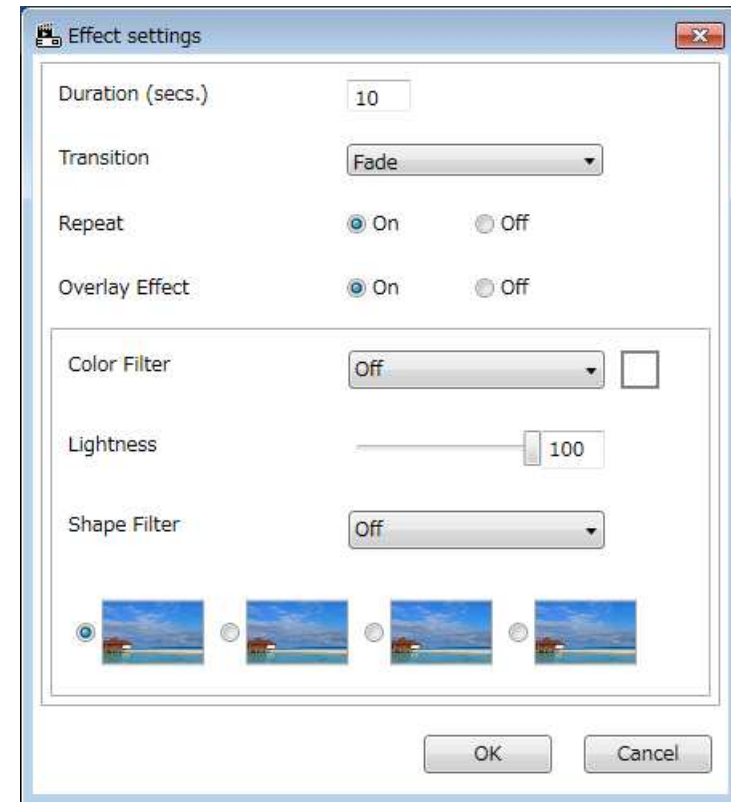
6	Time line area	Displays the images or movies added to the playlist in playback order. You can add up to 100 files to the playlist.
7	Register	Saves the changes to the playlist.
8	Cancel	Discards any unsaved changes you made to the playlist.
9		Opens the Effect settings screen. You can add effects settings to the playlist.
10	Add	Adds any selected images or movies in the Data list to the playlist one by one.
11	Remote favorite	Assigns a remote control shortcut key to the playlist. See your projector <i>User's Guide</i> to play back the playlist using the shortcut key.
12	Available formats	Displays the supported file types when you hover the mouse pointer over this text.
13		Updates the displayed files to reflect their current state in the selected folder.
14		Browses for folders.
15	Folder path	Displays the selected folder path.
16	Data list	Displays the images or movies in the selected folder. <ul style="list-style-type: none"> • Pictures tab: You can display image files. • Videos tab: You can display movie files. • Imported tab: You can display the files you previously imported to playlists. Any files used in the playlist are marked with .

» **Related Links**



- "Effect Settings Screen" [p.25](#)

Effect Settings Screen

When you click  in the **Playlists** tab, the **Effect settings** screen is displayed.

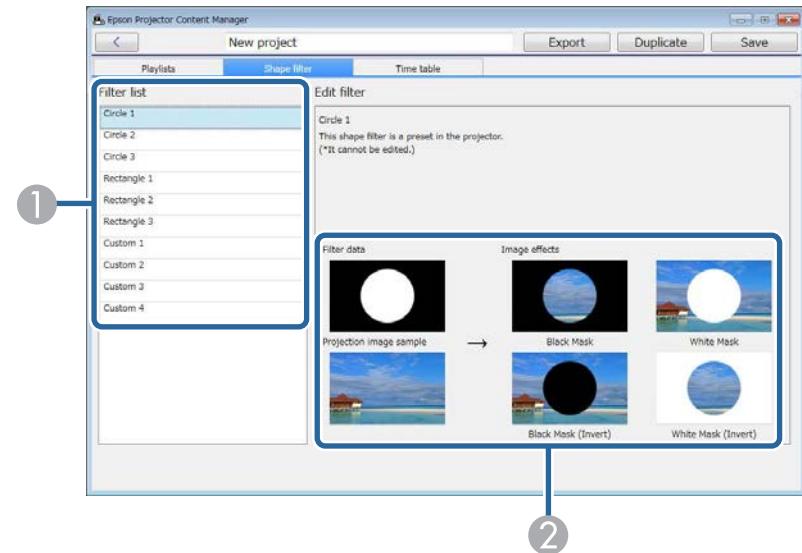


Duration (secs.)	Selects the time that each file is displayed before switching to the next file automatically. You can enter 1 to 60.
Transition	Selects a transition effect from a list of available transitions.
Repeat	Selects whether to enable loop playback or not.

<p>Overlay Effect</p>	<p>Selects whether to enable an overlay effect or not. Select On if you want to apply Color Filter, Lightness, and Shape Filter settings.</p> <div style="border: 1px solid black; padding: 5px; margin-top: 10px;">  <p>You can also select the Overlay Effect setting and the size and position settings for the standard shape effect filters in your projector's menu. See your projector <i>User's Guide</i> for details.</p> </div>
<p>Color Filter</p>	<p>Applies a color effect from the list of available effects to the playlist. You can also select a Custom color filter.</p>
<p>Lightness</p>	<p>Lightens or darkens the filter effect.</p>
<p>Shape Filter</p>	<p>Selects a standard or customized shape effect filter, and a black or white mask or inverted mask setting. (The standard shape effect filters are Circle 1 to Circle 3 and Rectangle 1 to Rectangle 3.)</p> <div style="border: 1px solid black; padding: 5px; margin-top: 10px;">  <p>You can customize the shape effect filters in the Shape filter tab.</p> </div>

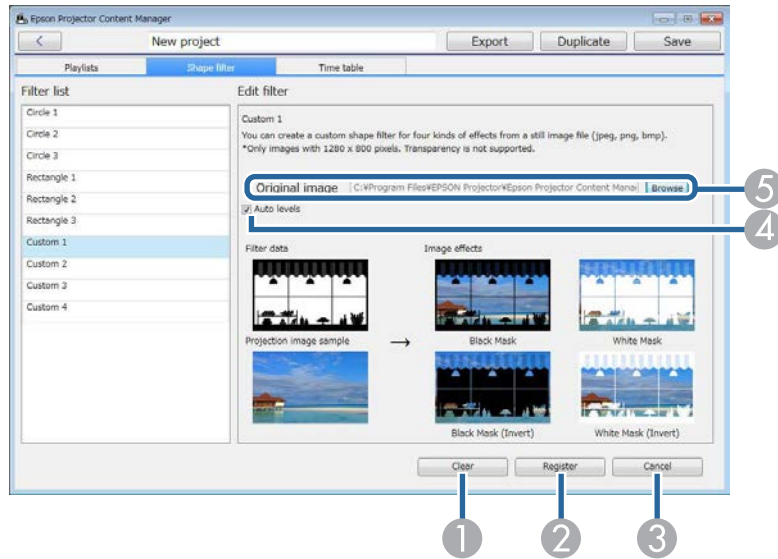
Project Screen - Shape Filter Tab

When you click the **Shape filter** tab in the project screen, the following screen is displayed.



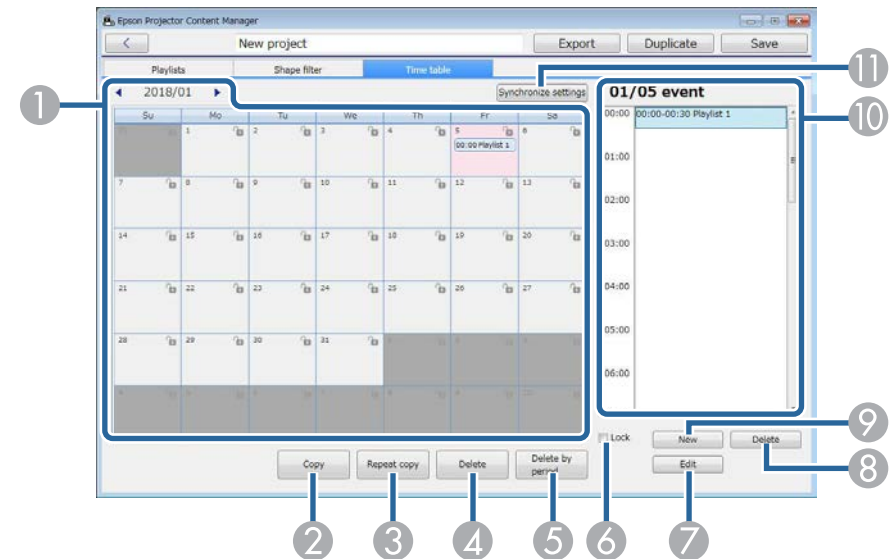
<p>1</p>	<p>Filter list</p>	<p>Displays the list of the shape effect filters. When you click a filter name, images using that shape effect filter are displayed in the Edit filter area. You can edit only the Custom 1 to Custom 4 shape effect filters.</p>
<p>2</p>	<p>Edit filter</p>	<p>Displays the effects of various shape filters on a sample image.</p>

When you select a **Custom 1** to **Custom 4** shape effect filter in the **Filter list**, the following functions are available.



Project Screen - Time Table Tab

When you click the **Time table** tab in the project screen, the following screen is displayed.



1	Clear	Clears the settings for the selected shape effect filter.
2	Register	Saves the settings for the selected shape effect filter to the project.
3	Cancel	Discards the changes for the selected shape effect filter.
4	Auto levels	Automatically adjusts the intensity levels of the image tones to emphasize black and white.
5	Original image	Displays the file path for the image you are using as the shape effect. Click the Browse button to select the file.

1	Calendar	Select to move to the previous month or year or select to the next month or year. To add a new event, double-click the day. To lock or unlock all events for the day, click the key icon.
2	Copy	Copies the all events in the selected day to another day.
3	Repeat copy	Repeats all events in the selected day to a particular day and time.
4	Delete	Deletes all events in the selected day.
5	Delete by period	Deletes all events in the selected period.

» Related Links

- "Customizing Shape Effect Filters for a Playlist" [p.14](#)

6	Lock	Prevents adding to or editing events in the selected day. You can still delete events from a locked day in the calendar after confirming the operation at the prompt. You cannot copy an event to a locked day.
7	Edit	Changes the playlist or schedule for the selected event.
8	Delete	Deletes the selected event.
9	New	Adds a new event to the selected day.
10	Event schedule	Displays the event schedule for the selected day.
11	Synchronize settings (supported models only)	Click this button to open the Register projector for synchronized playback screen to share the scheduled events with other selected projectors.

Appendix

See these sections to learn more about the Epson Projector Content Manager software.

► **Related Links**

- "Updating and Uninstalling the Software" [p.30](#)
- "Notices" [p.31](#)

Follow these instructions to update or uninstall the Epson Projector Content Manager software.

► Related Links

- "Getting the Latest Version of the Software" [p.30](#)
- "Uninstalling the Epson Projector Content Manager Software (Windows 7)" [p.30](#)
- "Uninstalling the Epson Projector Content Manager Software (Windows 8.1/Windows 10)" [p.30](#)

Getting the Latest Version of the Software

Updates to this software may be available on the Epson Web site.

Visit <http://www.epson.com>, and select your location.

Uninstalling the Epson Projector Content Manager Software (Windows 7)

Follow the instructions below to uninstall the Epson Projector Content Manager software.



You need administrator authority to uninstall the software.

- 1** Turn on your computer.
- 2** Make sure all running applications are closed.
- 3** Click **Start**, and then click **Control Panel**.
- 4** Click **Uninstall a program** from the **Programs** category.

- 5** Select **Epson Projector Content Manager**, and then click **Uninstall/Change**.


- 6** Follow the on-screen instructions.

Uninstalling the Epson Projector Content Manager Software (Windows 8.1/Windows 10)

Follow the instructions below to uninstall the Epson Projector Content Manager software.



You need administrator authority to uninstall the software.

- 1** Turn on your computer.
- 2** Make sure all running applications are closed.
- 3** Press the  key on the keyboard to display all apps.
- 4** Right-click (press and hold) **Epson Projector Content Manager Ver.X.XX**, and then select **Uninstall**.
- 5** Follow the on-screen instructions.

Check these sections for important notices about your software.

► **Related Links**

- "Copyright Notice" [p.31](#)
- "About Notations" [p.31](#)
- "General Notice" [p.31](#)
- "Copyright Attribution" [p.31](#)

Copyright Notice

All rights reserved. No part of this publication may be reproduced, stored in a retrieval system, or transmitted in any form or by any means, electronic, mechanical, photocopying, recording, or otherwise, without the prior written permission of Seiko Epson Corporation. No patent liability is assumed with respect to the use of the information contained herein. Neither is any liability assumed for damages resulting from the use of the information contained herein.

Neither Seiko Epson Corporation nor its affiliates shall be liable to the purchaser of this product or third parties for damages, losses, costs, or expenses incurred by the purchaser or third parties as a result of: accident, misuse, or abuse of this product or unauthorized modifications, repairs, or alterations to this product, or (excluding the U.S.) failure to strictly comply with Seiko Epson Corporation's operating and maintenance instructions.

Seiko Epson Corporation shall not be liable against any damages or problems arising from the use of any options or any consumable products other than those designated as Original Epson Products or Epson Approved Products by Seiko Epson Corporation.

The contents of this guide may be changed or updated without further notice.

Illustrations in this guide and the actual projector may differ.

About Notations

- Microsoft® Windows® 7 operating system
- Microsoft® Windows® 8.1 operating system

- Microsoft® Windows® 10 operating system

In this guide, the operating systems above are referred to as "Windows 7", "Windows 8.1", and "Windows 10". Furthermore, the collective term Windows may be used to refer to Windows 7, Windows 8.1, Windows 10, and multiple versions of Windows may be referred to as, for example, Windows 7/8.1, with the Windows notation omitted.

General Notice

EPSON is a registered trademark, and EPSON Exceed Your Vision is a registered logomark of Seiko Epson Corporation.

Microsoft, Windows, and Windows logo are trademarks or registered trademarks of Microsoft Corporation in the United States and/or other countries.

Intel® is a registered trademark of the Intel Corporation in the U.S. and/or other countries.

Other product names used herein are also for identification purposes only and may be trademarks of their respective owners. Epson disclaims any and all rights in those marks.

Software Copyright: This product uses free software as well as software to which this company holds the rights.

Copyright Attribution

This information is subject to change without notice.

©SEIKO EPSON CORPORATION 2018. All rights reserved.

2018.3 413569600EN