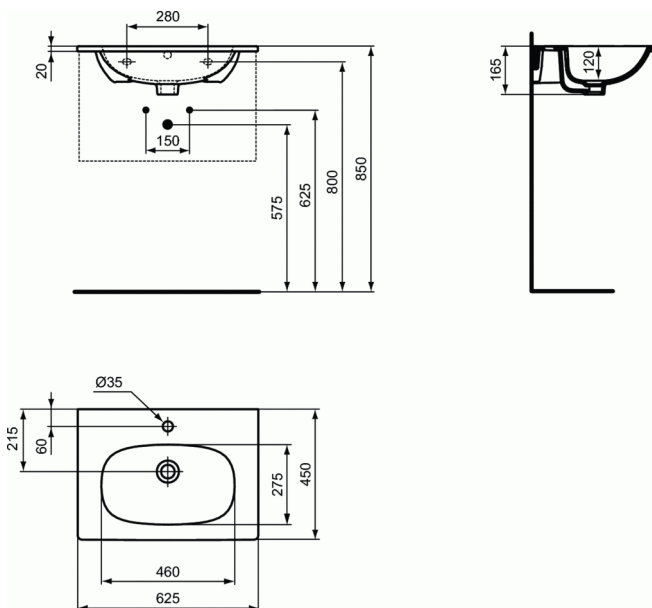


TESI Vanity basin 63 cm



Vanity basin 63 cm

Central tap hole punched

EN 14688

In carton box

For assembly only with: Tesi basin unit 60 cm or alone with siphon

Recommended equipment:

- Fixation set M10 x 140 mm (WW965340)
- Design siphon G1 1/4 (in case of installation without semi-pedestal and without base cabinet) (E0079AA)
- Design stop angle valve (water connection G1/2, connection with mixer 10 mm/ G3/8) (A3491AA)
- Siphon waste G1 1/4 - tubular type (A2305AA)
- Stop angle valve (water connection G1/2, connection with mixer 10 mm/ G3/8) - 1 pc (B7883AA)
- Escutcheon for siphon G1 1/4 (in case installation with mixer without pop-up waste) (B4801AA)

FINISHES*



* 01 = Euro White