



# MX430 AIR RGB

## COMPACT ARGB MID TOWER CASE WITH MODERN PATTERNED AIR VENTS

We've made COUGAR PC cases even better. The new patterned air vents and the LED strips create a special outlook for your amazing build. Three gorgeous ARGB fans, mighty support for up a 280mm radiator, a 320mm graphic card, and a 175mm CPU cooler deliver superior value for you.

## PATTERNED AIR VENTS DESIGN

MX430 Air RGB's front panel features patterned air vents design. It is the chassis that integrates the new concept of minimalist aesthetic and cooling performance. The hollow areas also allow internal lighting to create mesmerizing light effects.

## INCREDIBLE RGB LIGHTING

MX430 Air RGB comes with 3 ARGB fans and 2 LED strips. You are freely to control several amazing lighting effects with the dedicated RGB button. The built-in LED controller also adaptable with any compatible motherboards' 5V ARGB connection for system-wide lighting synchronization. The stunning light come out of a stylish panel helps reinforce the RGB effects.

## TOP-NOTCH COOLING

MX430 Air RGB's compact layout allows you to install six fans, a 280mm water cooling radiator, and a 175mm CPU cooler. This immense cooling potential will enable you to choose components freely.

## GREAT SUPPORT FOR COMPONENTS

Its advanced support for up to 320mm-long graphics cards, which allows you to enjoy the latest games with smooth framerates.

## CLEAN AND TIDY LOOKS

The PSU cover extends the color from the front panel. Unlike most massive tempered glass panels, it presents a distinctive view of divided design. The full-length PSU cover also allows you to hide the cables, improve the internal airflow, and showcase a clean build!

## GLOBAL WARRANTY POLICY

### WARRANTY PERIODS OF COUGAR GAMING DEVICES

Product : COUGAR MX430 AIR RGB

Warranty : 1 Year

• This warranty gives you specific legal rights. You may also have other rights granted under local law.

• These rights may vary.

• Only for electrical components.

## ДАТА ИЗГОТОВЛЕНИЯ ПРОДУКЦИИ

год и месяц изготовления продукции указаны в серийном номере продукта.

(существует 2 способа определения даты изготовления, оба способа описаны ниже)

**A** После S/N: первые две цифры означают год, вторые две – месяц изготовления. Например, S/N: H1**702**000001 означает, что товар был произведен в феврале 2017 года.

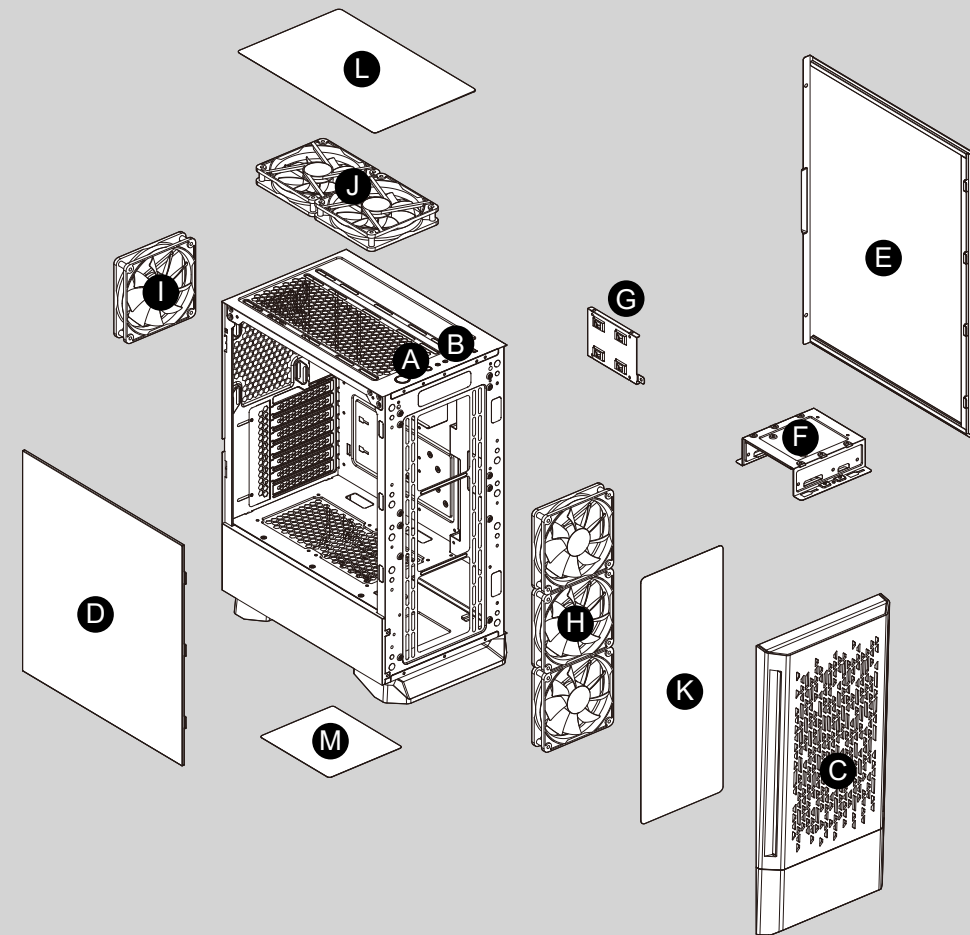
**B** После S/N: если указаны буквы, то две буквы представляют цифры из таблицы ниже, и означают год, последующие две цифры – месяц изготовления.

Например, S/N: DA**G02**REV1000001 означает, что товар был произведен в феврале 2017 года.

A	B	C	D	E	F	G	H	I	J
1	2	3	4	5	6	7	8	9	0

• Например, AG = 17 = 2017 год

## Assembly Drawing



**A** Power button / RGB button / Reset button

**B** USB 3.0 / USB 2.0 / HD audio ports

**C** Front panel

**D** Tempered glass side panel

**E** Right side panel

**F** 3.5" HDD cage (compatible for 2.5" HDD/SSD)

**G** 2.5" HDD/SSD tray

**H** 3 x 120mm / 2 x 140mm fans for front panel (120mm ARGB fans x 2 pre-installed)

**I** 1 x 120mm / 1x 140mm fan for rear panel (120mm ARGB fan pre-installed)

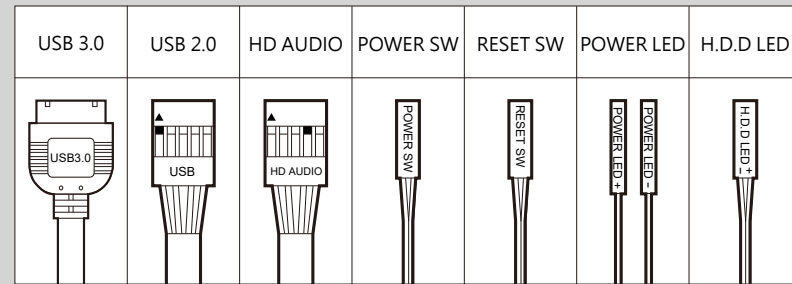
**J** 2 x 120mm / 2 x 140mm fans for top panel (optional)

**K** Air filter for front panel

**L** Air filter for top panel

**M** Air filter for bottom panel

## Installing the Front I/O Connectors



## ACCESSORY KIT

		Motherboard screws & 2.5" SSD screws	X 25
		Power supply screws	X 4
		3.5" HDD screws	X 8
		Stand-off for motherboard	X 3
		Fan screws	X 8
		2.5" HDD / SSD EVA washers	X 8
		Cable ties	X 5

Model Name	MX430 AIR RGB (BLACK) / (WHITE)	
Model No.	CGR-51C6B-AIR-RGB /CGR-51C6W-AIR-RGB	
Case Form Factor	Mid Tower	
Motherboard Type	Mini ITX / Micro ATX / ATX	
Dimensions (WxHxD)	217 (W) x 467 (H) x 371 (D) mm 8.5 (W) x 18.4 (H) x 14.6 (D) in	
I/O Panel	USB 3.0 x 2, USB 2.0 x 1, Mic x 1 / Audio x 1, Reset Button, RGB Button	
3.5" Drive Bay	2	
2.5" Drive Bay	3+1 (converted from 3.5" drive bays) / (1 SSD tray included)	
Expansion Slots	7	
Cooling Fan Support	Front	120mm x 3 / 140mm x 2 (120mm ARGB fan x 2 pre-installed)
	Top	120mm x 2 / 140mm x 2
	Rear	120mm x 1 / 140mm x1 (120mm ARGB fan x 1 pre-installed)
Maximum Number of Fans	Front	280mm / 240mm / 140mm / 120mm
	Top	240mm / 120mm
Water Cooling Support	Front	280mm / 240mm / 140mm / 120mm
	Top	240mm / 120mm
	Rear	140mm / 120mm
Transparent Left Panel	4mm Tempered Glass	
Onboard Lighting System	Yes	
RGB Sync with M/B	Yes	
Max. Graphics Card Length	320 (mm) / 12.6 in	
Max. CPU Cooler Height	175 (mm) / 6.9 in	
Max. PSU Length	160 (mm) / 6.3 in	

Specifications might vary depending on the country or region of sale.

## БЪЛГАРИЯ

• Подробни инструкции за употреба изтеглете от: <https://cougargaming.com/bg>



България QR код

## ENGLISH

- Distinctive front panel with patterned air vents
- Integrated RGB system with 5V ARGB motherboard synchronization
- Support for ATX motherboards
- Massive tempered glass side window
- Up to 320mm graphics cards
- Up to six fans and 175mm CPU cooler
- Up to a 280mm water cooling radiator

## DEUTSCH

- Markante Frontplatte mit gemusterten Lüftungsschlitzen
- Integriertes RGB-System mit 5V ARGB-Motherboard-Synchronisation
- Unterstützung für ATX Motherboards
- Massives Seitenfenster aus gehärtetem Glas
- Bis zu 320 mm Grafikkarten
- Bis zu sechs Lüfter und 175 mm CPU-Kühler
- Bis zu 280 mm Wasserkühler

## ESPAÑOL

- Panel frontal distintivo con salidas de aire estampadas
- Sistema RGB integrado con sincronización de placa base ARGB de 5 V
- Soporte para placas base ATX
- Ventana lateral de vidrio templado masivo
- Tarjetas gráficas de hasta 320 mm
- Hasta seis ventiladores y enfriador de CPU de 175 mm
- Radiador de refrigeración por agua de hasta 280 mm

## 日本語

- バターン化された通気孔を備えた特徴的なフロントパネル
- 5V ARGBマザーボード同期を備えた統合RGBシステム
- ATXマザーボードのサポート
- 巨大な強化ガラスのサイドウィンドウ
- 最大320mmのグラフィックカード
- 最大6つのファンと175mmのCPUクーラー
- 最大280mmの水冷ラジエーター

## PORTUGUÊS

- Painel frontal distinto com saídas de ar padronizadas
- Sistema RGB integrado com sincronização da placa-mãe 5V ARGB
- Suporte para placas-mãe ATX
- Janela lateral de vidro temperado maciço
- Placas gráficas de até 320 mm
- Até seis ventiladores e cooler para CPU de 175 mm
- Radiador de refrigeração de água de até 280 mm

## РУССКИЙ

- Отличительная передняя панель с узорчатыми вентиляционными отверстиями.
- Систе́ма RGB интегри́ро с синхронизацией материнской платы 5V ARGB
- Поддержка материнских плат ATX
- Массивное боковое окно из закаленного стекла.
- Видеокарты до 320 мм
- До шесть вентиляторов и 175-мм кулер для процессора
- Радиатор водяного охлаждения диаметром до 280 мм.

## FRANÇAIS

- Panneau avant distinctif avec bouches d'aération à motifs
- Système RVB intégré avec synchronisation de la carte mère ARGB 5V
- Prise en charge des cartes mères ATX
- Vitre latérale massive en verre trempé
- Cartes graphiques jusqu'à 320 mm
- Jusqu'à six ventilateurs et refroidisseur de processeur de 175 mm
- Jusqu'à un radiateur de refroidissement par eau de 280 mm

## 中文

- 前面板独特异形通风孔设计
- RGB整合系统支援5V ARGB主板灯效同步控制功能
- 支持ATX主板
- 全景钢化玻璃侧窗
- 最高支持 320mm 显卡
- 最高支持6个风扇和175mm CPU散热器
- 最高支持280mm 水冷排

## POLISH

- Charakterystyczny panel przedni z wzorzystymi otworami wentylacyjnymi
- Zintegrowany system RGB z synchronizacją płyty głównej 5 V ARGB
- Obsługa płyt głównych ATX
- Masywna szyba boczna z hartowanego szkła
- Karty graficzne do 320 mm
- Do sześć wentylatorów i 175 mm chłodzenie procesora
- Do 280 mm chłodnicy wody chłodzącej

## ITALIA

- Pannello frontale distintivo con prese d'aria a motivi geometrici
- Sistema RGB integrato con sincronizzazione scheda madre 5V ARGB
- Supporto per schede madri ATX
- Massiccio finestrino laterale in vetro temperato
- Schede grafiche fino a 320 mm
- Fino a sei ventole e dispositivo di raffreddamento della CPU da 175 mm
- Radiatore di raffreddamento ad acqua fino a 280 mm

## 한국어

- 패턴이있는 통풍구가있는 독특한 전면 패널
- 5V ARGB 마더 보드 동기화를 지원하는 통합 RGB 시스템
- ATX 마더 보드 지원
- 대형 강화 유리 측면 창
- 최대 320mm 그래픽 카드
- 최대 6 개의 팬과 175mm CPU 쿨러
- 최대 280mm 수냉 라디에이터

• يجب تركيب كل قطعة بحذر و بمكانها المناسب.

• من يقوم بعملية التركيب الشخص المختص فقط.

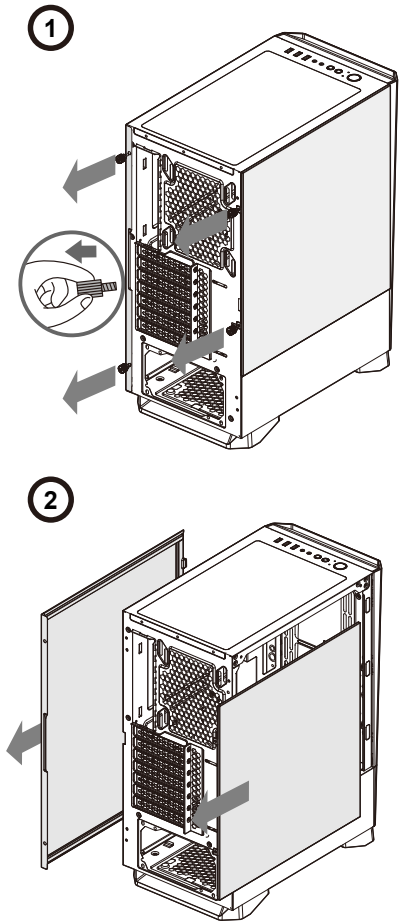
تعليمات التركيب و الأمان:

• عند التركيب أو التفكيك يجب التأكد من أن جميع الأسلاك مفصولة عن الكهرباء.

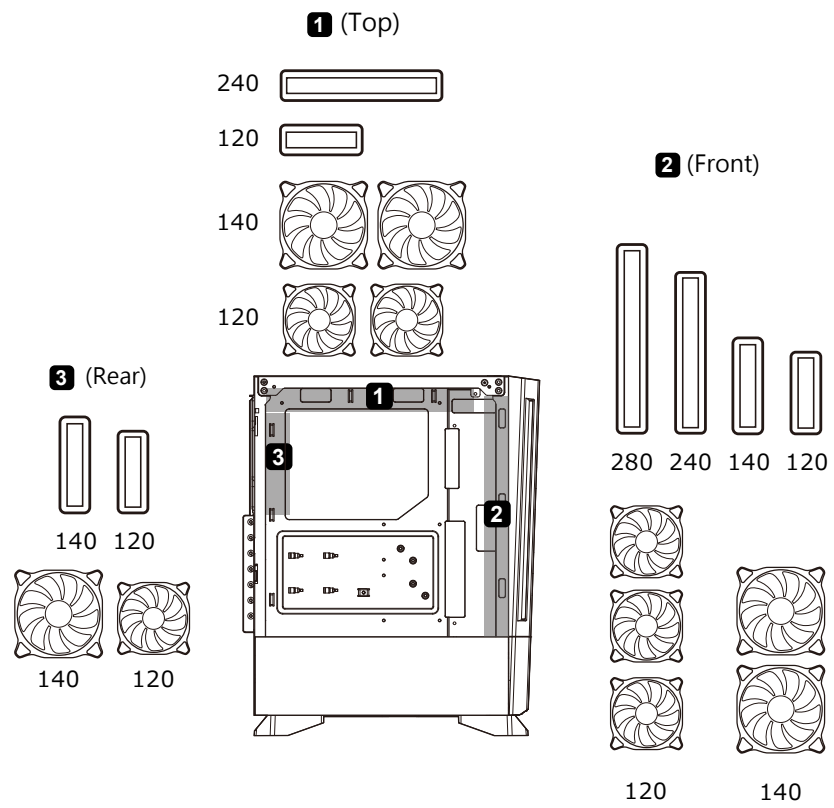
• يجب اتخاذ الاحترازات اللازمة لمنع الصعق الكهربائي.

• يجب ارتداء الملابس المناسبة أثناء تركيب/ تجميع الكمبيوتر.

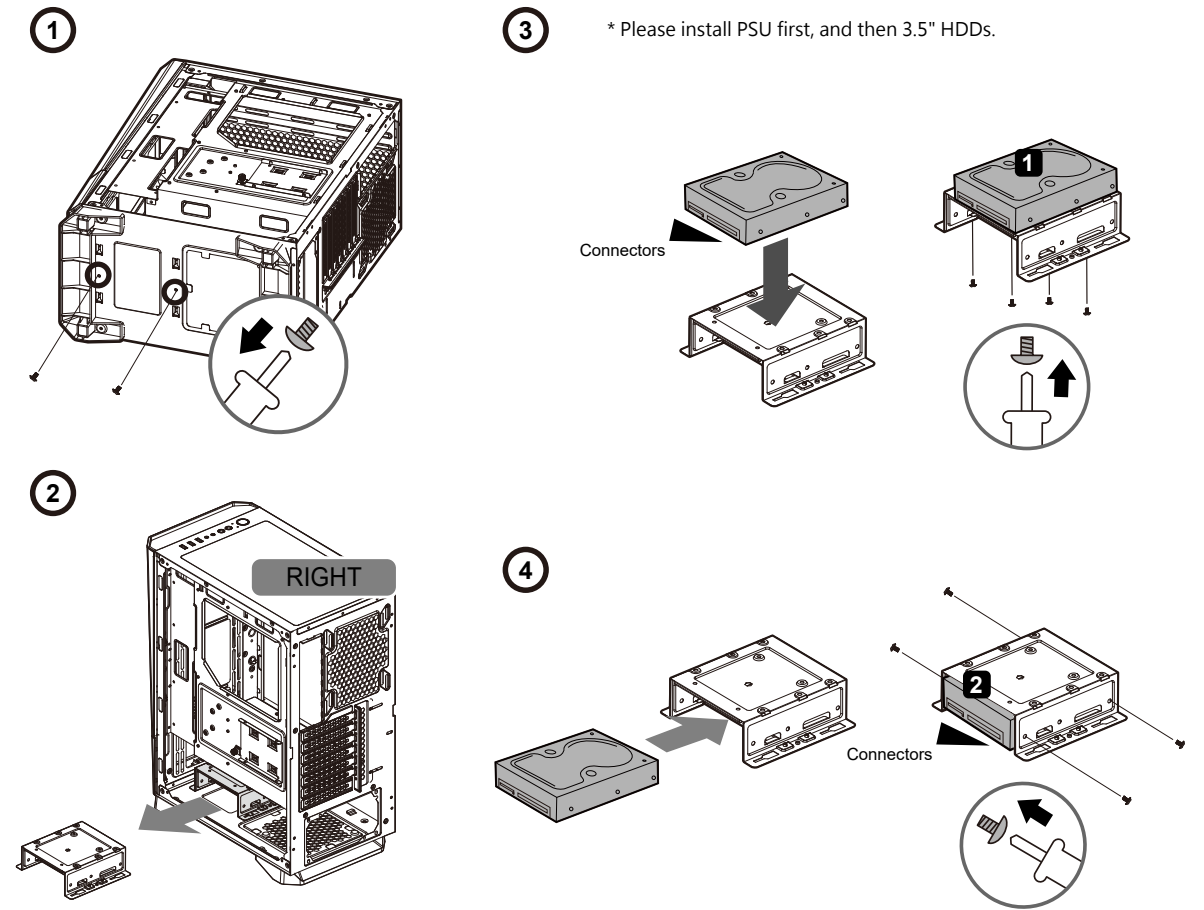
Removing the side panels



Installing water cooling radiators & cooling fans

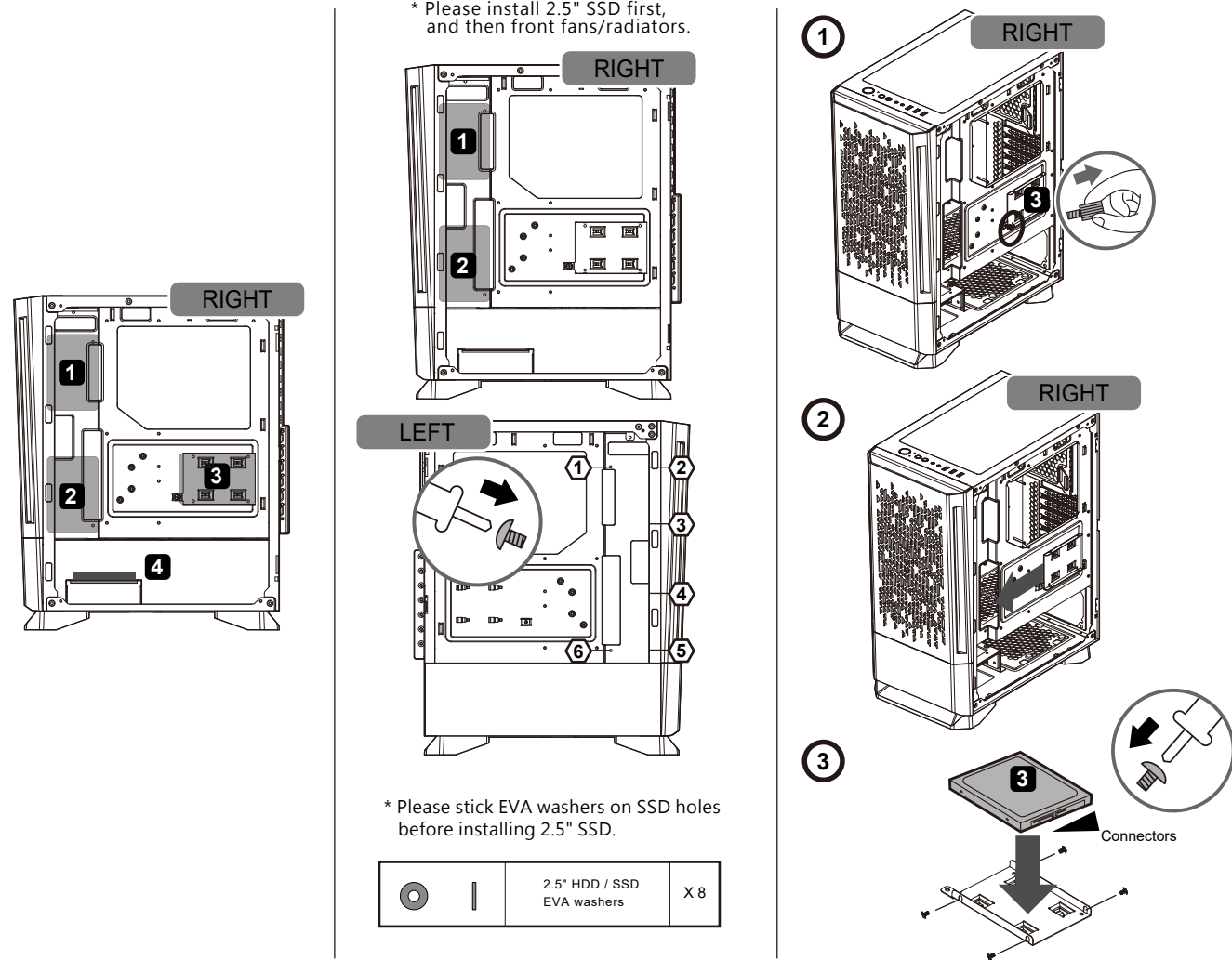


Installing 3.5" HDDs

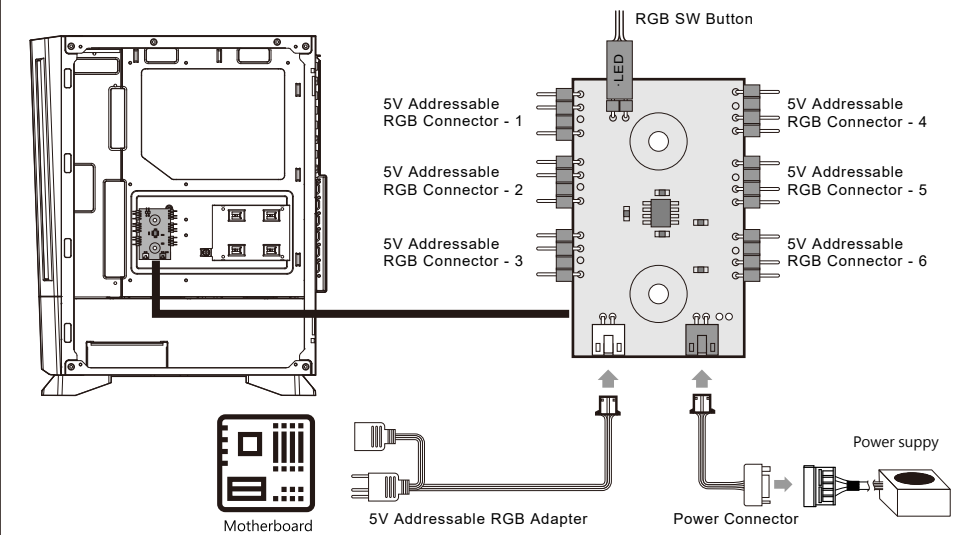


Installing 2.5" SSDs /HDDs

\* Please install 2.5" SSD first, and then front fans/radiators.



RGB & Fan control system



■ **First Mode: Several Lighting Effects**  
 You can use the front panel's RGB SW button to switch various beautiful lighting effects we have preset for you.

■ **Second Mode: Motherboard Synchronization**  
 Please use the included adapter to connect to a compatible motherboard's 3-pin 5V Addressable RGB header. Then, press and hold the RGB SW button for 3 seconds.

※ If you press and hold the RGB SW button for 3 second again. It will be returned to the First mode: Several Lighting Effects.

