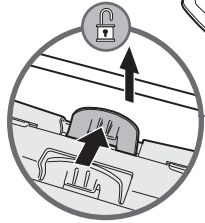
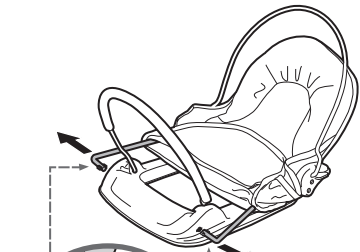


removing the fabric (continued)

Press the tab to unlock backrest support & lift out!



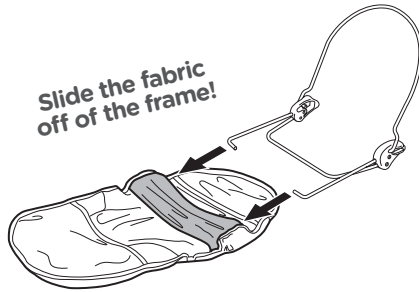
5



Release support legs from bather base by rotating the legs until key can slide out of slot!

6

Slide the fabric off of the frame!



7

cleaning & maintenance

- Remove fabric cover. Machine wash on delicate cycle with no bleach.
- Wipe frame with a damp cloth and mild soap.
- Put fabric cover back on frame. Air dry.

Please check the following before each use:

- The seams in the fabric are intact and in good condition.
- Ensure the frame backrest support leg is properly snapped into one of the slots on the base.
- Do not use the bather if any components are damaged or missing.

We're here to help! If you have questions or need assistance, please contact our Consumer Relations Team at 1-401-671-6551 or www.summerinfant.com/contact



Summer Infant (USA), Inc.

1275 Park East Drive
Woonsocket, RI 02895 USA
1-401-671-6551

© 2018 Summer Infant (USA), Inc.

Please retain information
for future reference.
Colors and styles may vary.
MADE IN CHINA.
8/18



Please read the following instructions and warnings carefully
KEEP THIS INSTRUCTION MANUAL FOR FUTURE REFERENCE.

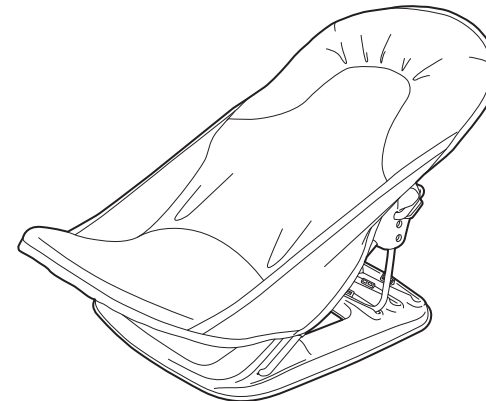
Product comes fully assembled, and folded flat for compact storage.

Fabric cover is machine washable.

For product support, contact us at 1-401-671-6551

or www.summerinfant.com/contact

For use with children from birth until sitting up unassisted.



Deluxe Baby Bather INSTRUCTION MANUAL

The Deluxe Baby Bather from Summer Infant cradles newborns, making bathtime more calm and relaxed. Soft mesh fabric and a solid base give newborns extra support.

⚠ WARNING

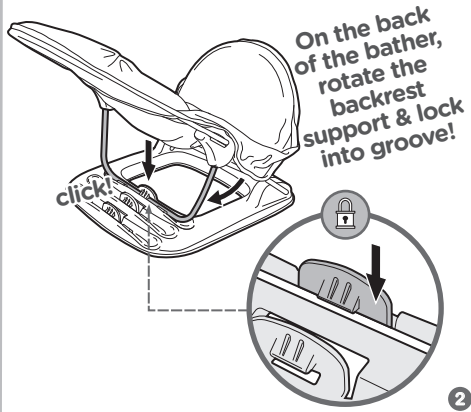
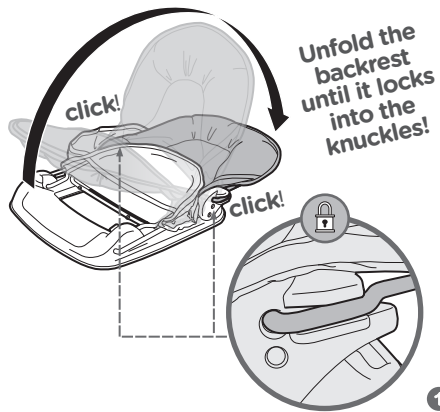
DROWNING HAZARD

- Babies have **DROWNED** while using infant bathers.
- **STAY** in arm's reach of your baby.
- Use **ONLY** in empty adult tub or sink.
- Keep drain open in adult tub or sink.
- Never rely on a toddler or preschooler to help your baby or alert you to trouble. Babies have drowned even with other children in or near bath tub.
- Infants can drown in as little as 1 in. (2.5 cm) of water. **ALWAYS** bathe your infant using as little water as necessary.
- **NEVER** bathe baby until you have tested the water temperature. **ALWAYS** test the temperature of the water in, or being put into, the infant bather prior to placing infant into the product.
- Bath water should be between 90°F and 100°F (32.2°C and 37.8°C).

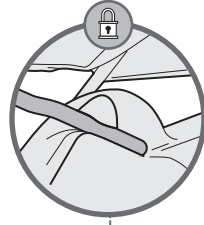
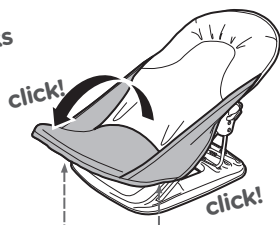
FALL HAZARD: Babies have suffered head injuries falling from infant bathers.

- Place bather **ONLY** in adult tub or sink for safe use.
- **NEVER** lift or carry baby in the product .
- **STOP** using product when baby starts trying to sit up or has reached 20 lbs, whichever comes first.
- **NEVER** use on uneven or elevated surfaces.
- **ALWAYS** make sure the bather is secure before placing child on product.
- **NEVER** make adjustments or change recline position to product with child in bather. Remove child before adjusting or removing product.
- Discontinue use of product if it becomes damaged, broken, or disassembled.
- This product is not a toy. **DO NOT** allow children to play with it.

bather setup

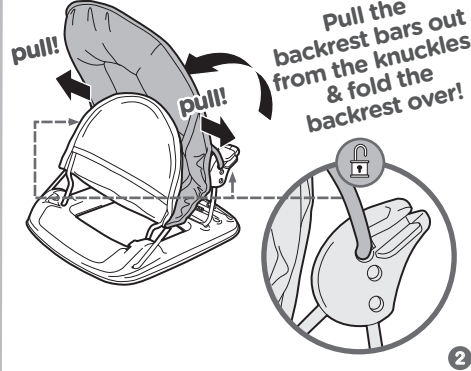
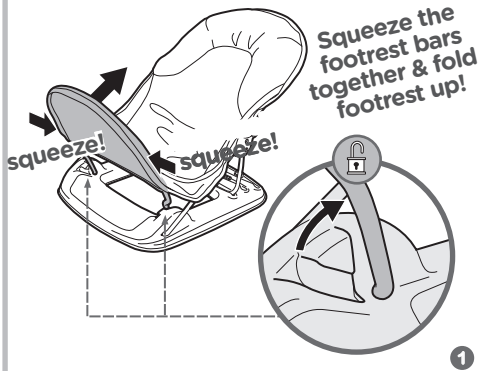


Rotate footrest down until it locks into place!



FINISHED!

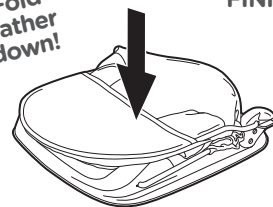
folding the bather



Unlock backrest support & rotate under!

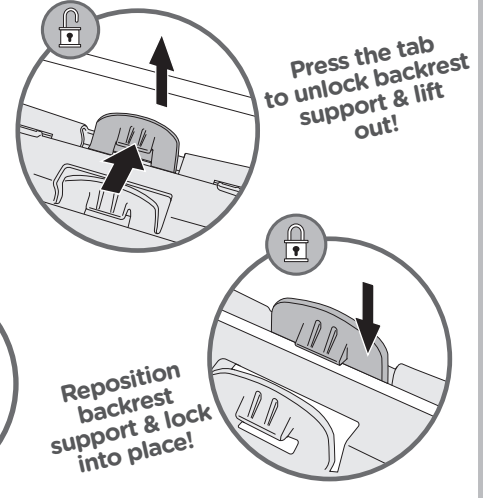
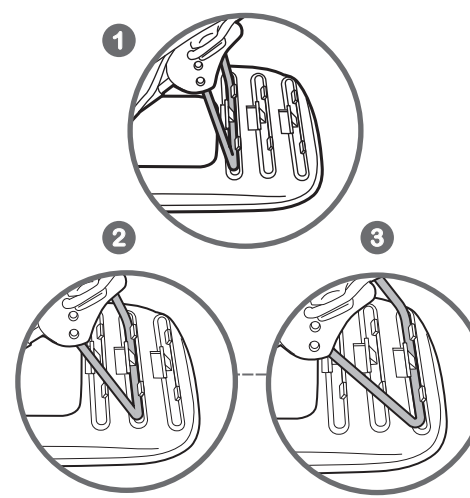


Fold bather down!

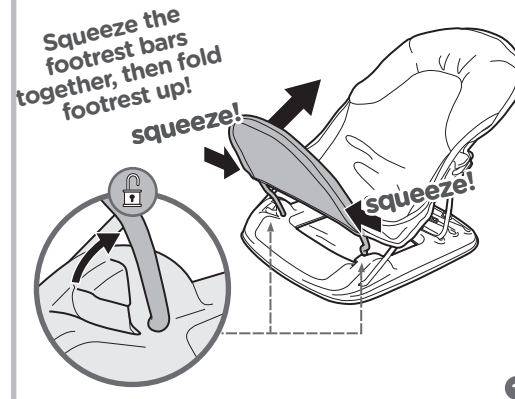


FINISHED!

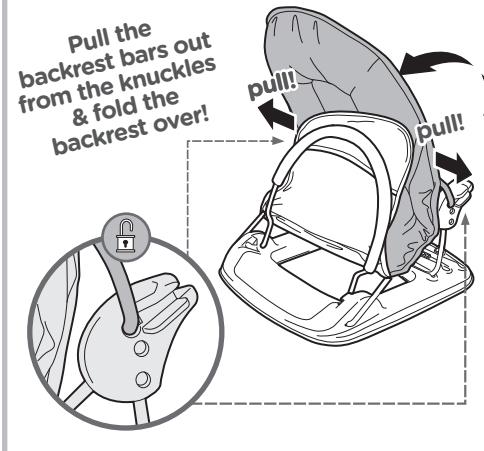
reclining the backrest



removing the fabric



Slide the seat cover off of the footrest!



Slide the seat cover off of the backrest!

