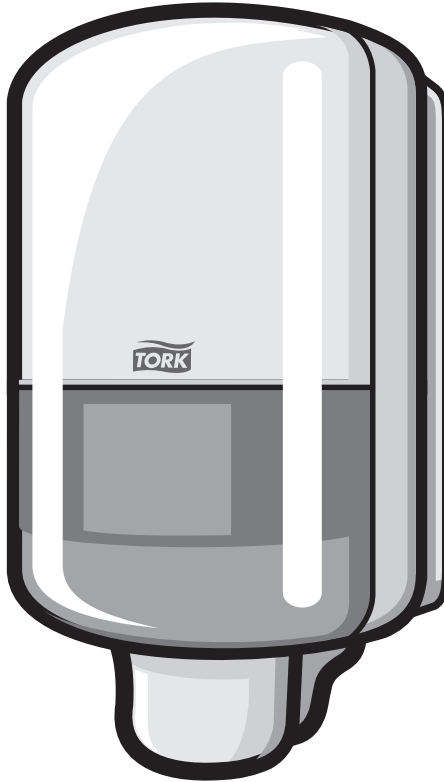


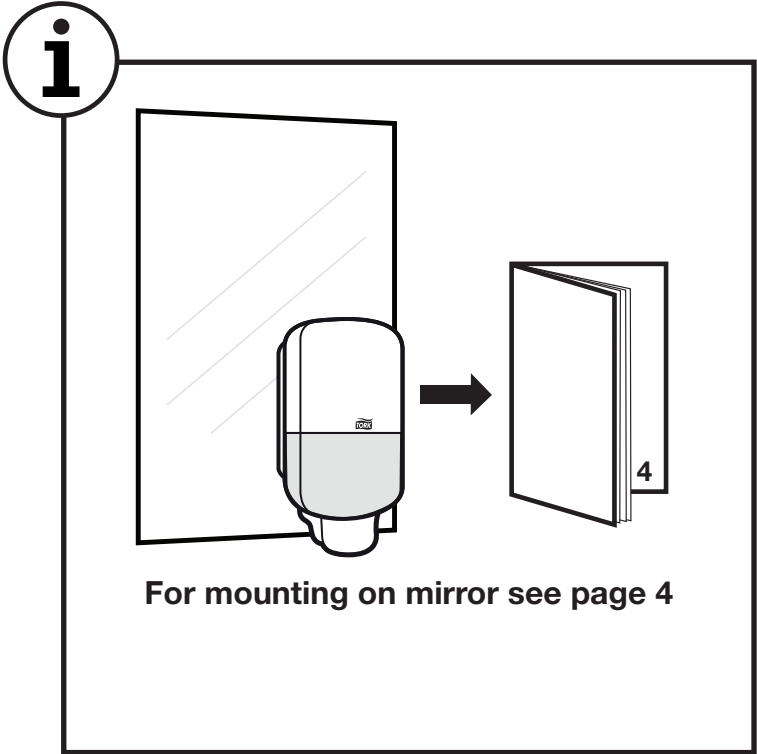
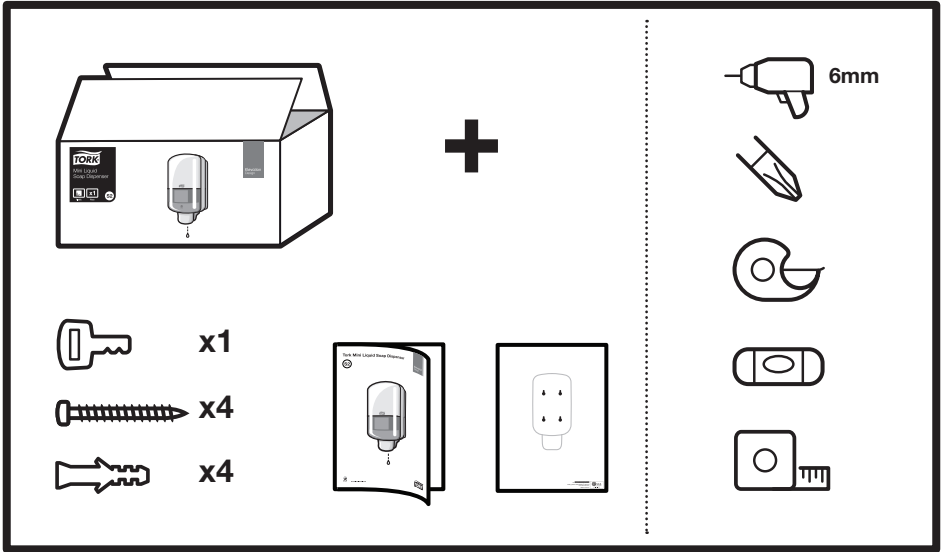
Tork Mini Liquid Soap Dispenser

S2

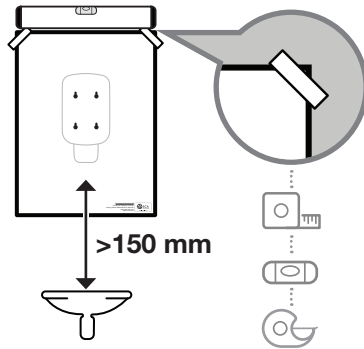
Elevation
Design



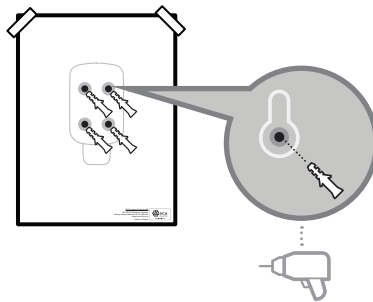
Tork Mini Liquid Soap Dispenser



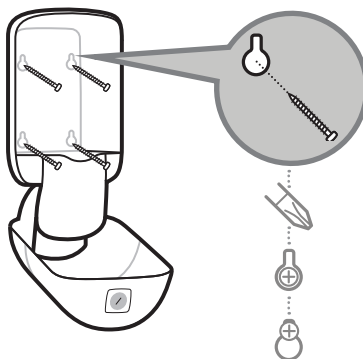
1



2

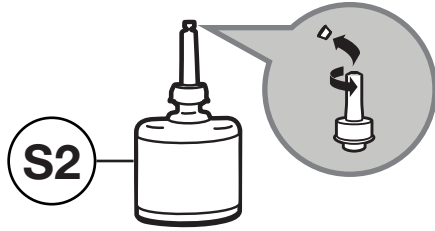


3

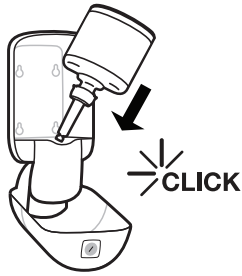


Tork Mini Liquid Soap Dispenser

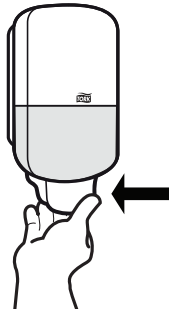
4



5



6

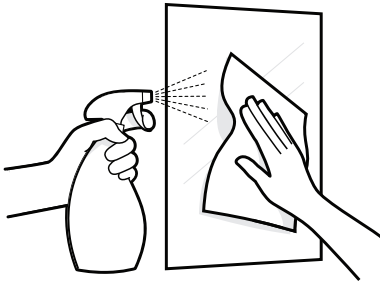


3

i

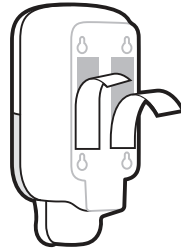
Mounting on mirror

1



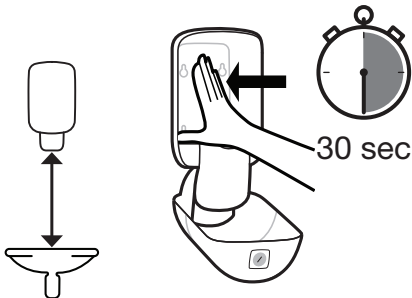
Ensure the mounting surface is flat, clean and dry.

2



Peel the protective liners from the tape exposing the adhesive.

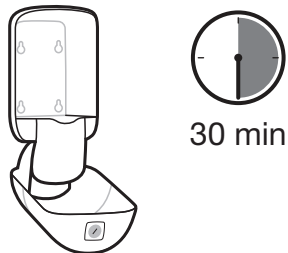
3



>150 mm

Mount the dispenser to the flat surface, press firmly and hold in place for at least 30 seconds.

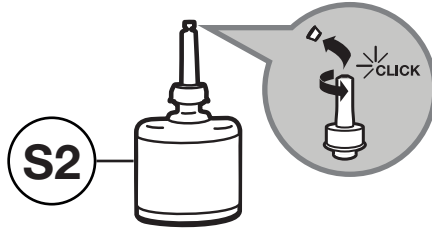
4



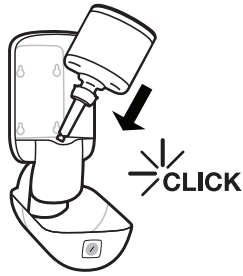
Do not place the refill or batteries in the dispenser for at least 30 minutes.

Tork Mini Liquid Soap Dispenser

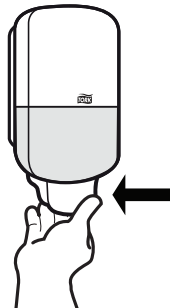
4



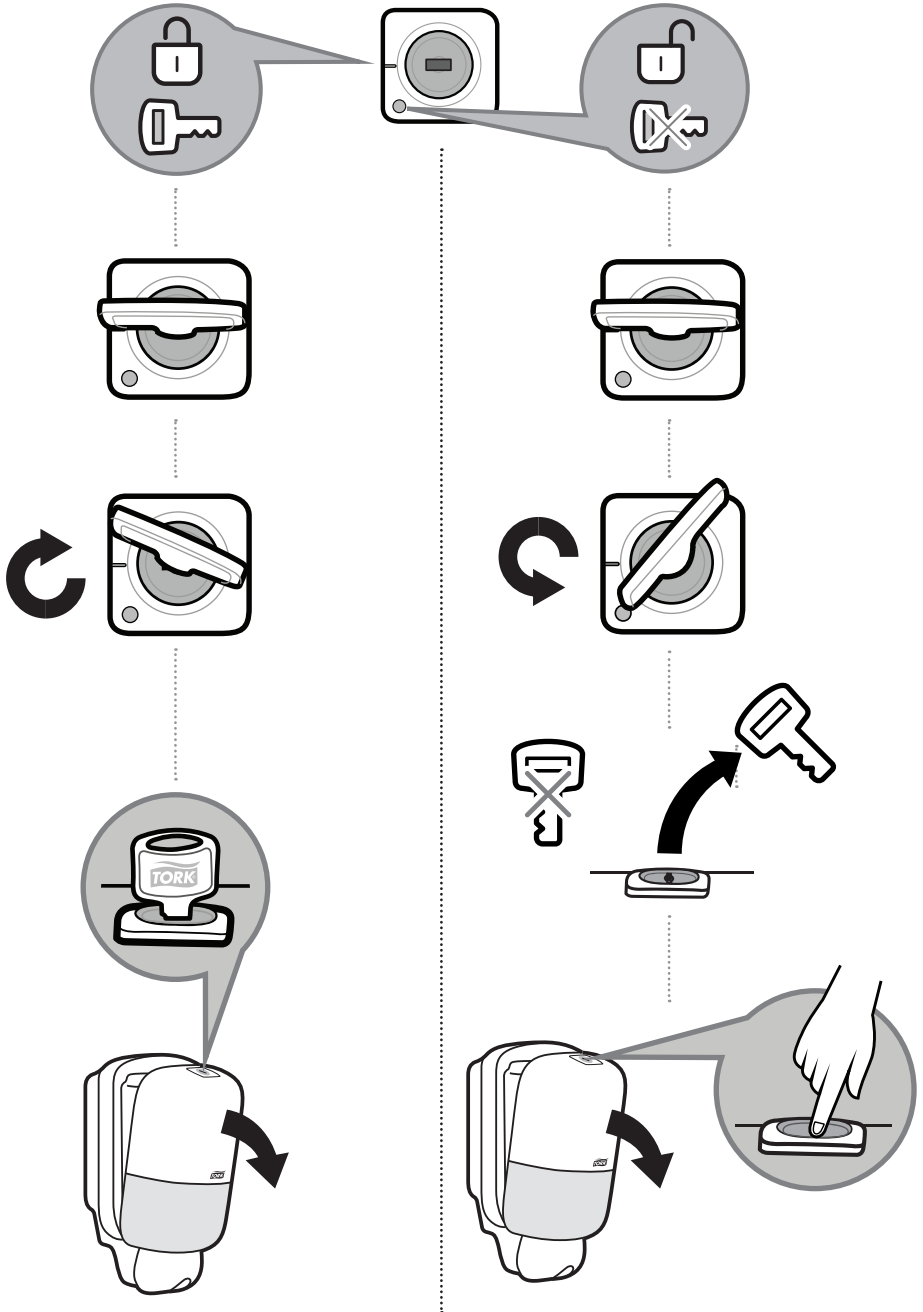
5



6



5



Disposal

- **Damaged or malfunctioning product should be disposed of immediately to avoid potential of injury**
- **Products should be disposed of in accordance with applicable regulations**

Cleaning instructions

- **Clean dispenser with mild detergent and soft cloth**

European Community Design Registration RCD 000929971



SCA Hygiene Products AB
SE-405 03 Göteborg, Sweden
Visiting address: Mölndals Bro 2, Mölndal
www.sca-tork.com
Made in Hungary