

Inspection report

验货报告



宁波洒哇地咔电器有限公司

Ningbo SWDK Electrical Appliance Co.,Ltd

中国浙江省宁波余姚方桥工业园育才东路 128 号

No.128, Yucai East Road, Fangqiao Industrial Park, Yuyao, Zhejiang

报告编号 Report number:20210815001							
供应商 Supplier	宁波洒哇地咔电器有限公司 Ningbo SWDK Electrical Appliance Co.,Ltd		采购单号 Order Num	L2103036	订单数 Product Amount	1460PCS+365 拖布	
品名 Product	无线手持擦地机 Cordless Vibration Mop	型号 Model	D260	验货数 Inspections	1460PCS+3 65 拖布	检验日期 Inspection Date	2021.08.15
抽样依据: GB/T2828.1 检验依据: 检验标准 封样确认书 封样 其它 Basis of sampling: G B / T 2828.1. Inspection basis: test standard seal sample confirmation seal sample other							
一般检验水平 (II) 级, 检查数: 125 台 General level of inspection (II), number of inspections :125				特殊检验水平 (S-2) 级, 检查数 : 8 台 Special inspection level (S-2), inspection: 8 pcs			
CR = 0; AC: 0 RE: 1		MA = 1.5; AC: 5 RE: 6		MI = 4.0; AC: 10 RE: 11			
AQL 累计 Cumulative		CR: 0 MA: 0 MI: 0		特殊检验不良数记入一般检查水平。 The number of special test defects is recorded in the general examination level.			
检验记录 Inspection Record							
检验项目 Items	检验要求 Inspection Requirement		检验结果 Result	抽样水平 Level	CR	MA	MI
外箱 Outer Box	(1) 封箱完整, 不得少装, 封箱胶纸不能起翘, 若不符 The sealing case shall be complete and shall not be less packed, and the sealing tape shall not tilt up, if it does not match		符合要求 meet the requirement	II		×	
	(2) 任何产品混装、错装。 Any product is mixed or mispacked.		符合要求 meet the requirement	II	×		
	(3) 装箱不得鼓胀或凹陷, 外箱不可有破损、淋湿、污垢、刮花, 若不符 (严重的判 Ma) The packing shall not be bulging or sunken, and the outer box shall not be damaged, wet, dirty or scratched, if it does not match (Serious judge Ma)		符合要求 meet the requirement	II		×	×
	(4) 外箱字唛内容、位置、颜色正确, 且无遗漏 (如: 品牌等箱唛内容), 若不符 The contents, position and color of the outer box marks are correct and there are no omissions (e.g. brand, etc.) If it doesn't match		符合要求 meet the requirement	II		×	
	(5) 外箱字唛内容 (如: 品牌等箱唛内容) 应清晰易辨, 不得模糊不清, 如不可读 MAJ, 可读 MIN. The contents of the outer box mark (e.g. brand and other box marks) should be legible and not ambiguous, Unreadable MAJ, readable MIN.		符合要求 meet the requirement	II		×	
	(6) 尺寸、材质不符合要求 Size and material does not meet the requirement.		符合要求 meet the requirement	II		×	

	(7) 包装箱折痕处以最不利方向弯折 90° 5 次, 应没有任何破损或破裂。 The box crease shall be bent 90° 5 times in the most adverse direction without any breakage or rupture.	符合要求 meet the requirement	S-2		×	
	外箱尺寸 Outer box size	符合要求 meet the requirement	S-2		×	
	彩盒尺寸 gift box size	符合要求 meet the requirement	S-2		×	
	说明书、安装件等附件与要求一致无漏放或错误。 User manual, installation parts and other accessories are consistent with the requirements without leakage or error.	符合要求 meet the requirement	II		×	
彩盒 gift box	(1) 封箱完整, 过塑、覆膜符合要求, 装箱不得鼓胀或凹陷, 接合位完整 不得裂开, 扣舌完整并能有效扣住, 若不符 (严重的判 Ma) The seal is complete, the plastic and film cover meet the requirements, the packing shall not bulge or sag, the joint position shall be complete, the buckle tongue shall be complete and can be effectively buckled, if not (severe judge Ma)	符合要求 meet the requirement	II		×	
	(2) 彩盒不可有破损、严重变形或表面出现裂痕、不可被淋湿、污脏、刮花、磨花、若不符 (严重的判 Ma) The gift box shall not be damaged, severely deformed or cracked on the surface, shall not be wet, dirty, scratched, ground, if not (severe judge Ma)	符合要求 meet the requirement	II		×	
	(3) 彩盒颜色不符样板, 严重色差; 或同一批出现二种或二种以上颜色 The color of the gift box is not consistent with the sample, serious color difference; Or two or more colors in the same batch	符合要求 meet the requirement	II		×	
	(4) 彩盒及其贴纸的印刷内容、位置正确, 无遗漏 (如: 品牌、产品型号、电脑码等), 若不符 The printing content and position of the gift box and its stickers are correct without omission (such as: brand, product model, computer code, etc.), if not	符合要求 meet the requirement	II		×	
	(5) 彩盒印刷内容错误、印刷内容 (如: 品牌、产品型号、电脑码等) 模糊不清(不可读); Gift box printing error, printing content (such as: brand, product model, computer code, etc.) unclear (unreadable);	符合要求 meet the requirement	II		×	
	(6) 尺寸、材质不符合要求 Size, material does not meet the requirements	符合要求 meet the requirement	S-2		×	
	(7) 彩盒二维码、条码错误、模糊、扫描仪扫不出。 Gift box two-dimensional code, barcode error, blur, scanner can not identify.	符合要求 meet the requirement	S-2		×	
	(8) 包装箱折痕处以最不利方向弯折 90° 5 次, 应没有任何破损或破裂。 The packing case crease shall be bent 90° 5 times in the most adverse direction without any damage or breakage.	符合要求 meet the requirement	S-2		×	
包装 Package	(1) 遗漏、混装或者损毁附件、零配件、说明书、赠品等 Omission, mixing or destruction of accessories, spare parts, instructions, gifts, etc.	符合要求 meet the requirement	II		×	
	(2) 遗漏、混装或者损毁吊牌、合格证、其他宣传纸质资料, 以及质量差等 Omission, mixing or destruction of tags, certificates of conformity, other promotional paper materials,	符合要求 meet the requirement	II			×

	and poor quality, etc.					
	(3) 说明书上安规信息部分(警告语、操作方法、)错误或者遗漏、说明书皱折、漏字、字体印刷模糊。 Error or omission in the part (warning words, methods of operation,) of safety regulation information on the instruction manual, crumpling of the instruction manual, missing words and blurring of font printing.	符合要求 meet the requirement	II		×	
	(4) 漏装胶袋(主要成品保护胶带遗漏的判 Ma) Leak plastic bags (missing main finished protective tape judge MA)	/	II		×	×
	(5) 胶袋开口大于7英寸(177mm),必须按照要求进行打孔,若不符 Plastic bag openings greater than 7 inches (177 mm) must be perforated as required. If they do not match	/	II	×		
	(6) 胶袋印刷正确(包括内容、字体大小、清晰度、颜色等),若不符 Plastic bags are printed correctly (including content, font size, clarity, color, etc.) if they do not match	/	II			×
	(7) 胶袋印刷内容遗漏警告语,最小厚度不小于0.06mm Plastic bag printing content missing warning words, minimum thickness not less than 0.06 mm.	/	II		×	
	(8) 包装方法必须符合要求,不得遗漏包装材料,若不符(严重的判 Ma) Packing must meet the requirements and the material must not be omitted, if not (severe judge Ma)	符合要求 meet the requirement	II		×	×
	(9) 充电器线未按照要求包扎和包装 Adapter cord is not bandaged and packed as required	符合要求 meet the requirement	II			×
	(10)带有完整包装的成品堆叠6层保持24小时,包装没有破损 Stacks of finished products with complete packaging keeps for 24 hours with no breakage	符合要求 meet the requirement	II		×	
重量 Weight	外箱+彩盒+产品重量+附件 Outer box+gift box+Product+Accessory	符合要求 meet the requirement	S-2		×	
	产品净重 Product net weight	符合要求 meet the requirement	S-2		×	
外观\装配 Appearance\ Assembly	1. 产品A面各类外观缺陷,例如:变形、模痕、缩水、批锋、毛刺、刮花、磨花、色点、污点、料流纹、夹水纹、顶白、凸包、凹点、各种表面清洁剂残留痕迹、保护膜未去除干净、喷油掉油或露底、喷粉起皮脱落或露底、电镀起皮脱落或漏底、打磨痕、削批锋刀痕,各类加工导致颜色变异等(严重的判 MaJ) All kinds of appearance defects of A surface of the product, such as: deformation, mold marks, shrinkage, batch front, burr, scratch, grinding, color spots, stains, material flow lines, water clip, top white, convex, concave, surface cleaning agent	符合要求 meet the requirement	II		×	×

residual marks, protection film not removed, oil injection or exposed, powder peeling off or exposed, electroplating peeling off or leaking, grinding marks, cutting edge knife marks, all kinds of processing resulting in color variation.(severe Maj).					
2. 产品 B 面各类外观缺陷, 例如: 变形、模痕、缩水、批锋、毛刺、刮花、磨花、色点、污点、料流纹、夹水纹、顶白、凸包、凹点、各种表面清洁剂残留痕迹、保护膜未去除干净、喷油掉油或露底、喷粉起皮脱落或露底、电镀起皮脱落或漏底、打磨痕、削批锋刀痕, 各类加工导致颜色变异等 All kinds of appearance defects of B surface of the product, such as: deformation, mold marks, shrinkage, batch front, burr, scratch, grinding, color spots, stains, material flow, water clip, top white, convex, concave, surface cleaning agent residual marks, protection film not removed, oil injection or exposed bottom, powder peeling off or exposed bottom, electroplating peeling off or leaking bottom, grinding marks, cutting edge knife marks, etc.	符合要求 meet the requirement	II		×	×
3. 产品 A 面污脏、残留水渍、油渍但不容易清除 (严重的判 Maj) Products A surface dirty, residual water stains, oil stains but not easy to remove (severe Maj)	符合要求 meet the requirement	II		×	×
4. 产品 B 面污脏、残留水渍、油渍但不容易清除。 Products B surface dirty, residual water stains, oil stains but not easy to remove.	符合要求 meet the requirement	II			×
5. 同一部件或相同颜色部件之间表面颜色错误或色差——对不上 Pantone 或样板的 (B 面判 Mi) There is color error or color difference between the same part or parts with the same color —— does not match Pantone or template (B face Mi)	符合要求 meet the requirement	II		×	×
6. 表面处理、表面光泽度错误或不一致——对不上样板, 不符规格的 (B 面判 Mi) Surface treatment, surface gloss errors or inconsistencies —— no template, no specifications (B face Mi)	符合要求 meet the requirement	II		×	×
7. 利边、尖锐毛刺 Sharp edges, sharp burrs	符合要求 meet the requirement	II	×		
8. 产品破裂、损坏 Product rupture, damage	符合要求 meet the requirement	II		×	
9. 充电器插头损伤 (露铜判 Cr;未漏铜但高压失败判 Cr; 其他 Ma) Charger plug damage (exposed copper Cr; not leaking copper but high voltage failure Cr; other Ma)	符合要求 meet the requirement	II	×	×	×
10. 电源线、插头污脏 (不可去除 Ma; 可去除 Mi) Power cord, plug dirty (not removeable Ma; removeable Mi)	符合要求 meet the requirement	II		×	×
11. 合模线刮手, 大于 0.1mm (A 面 Ma, B 面判 Mi) Die line scraping, greater than 0.1 mm (face A Ma,B face Mi)	符合要求 meet the requirement	II		×	×

	12. 喷涂表面严重凹点、脱落、划花、崩缺、破裂 Severe concave, shedding, scratching, breakage and rupture of sprayed surfaces	符合要求 meet the requirement	II		×	
	13. 配合部件的边缘段差小于 0.2mm (OK)、0.2-0.5mm (MIN)、大于 0.5mm (MAJ) The margin segment difference of the mating parts is less than 0.2 mm (OK), 0.2-0.5 mm (MIN) and greater than 0.5 mm (MAJ)	符合要求 meet the requirement	II		×	×
	14. 配合部件之间的缝隙不符合设计要求配合 Gap between mating parts does not meet design requirements	符合要求 meet the requirement	II		×	×
标识 Mark	1. 遗漏铭牌或者警告语 Missing nameplate or warning	符合要求 meet the requirement	II		×	
	2. 铭牌或警告语内容错误或者遗漏, 内容不清晰或内容不可读, 字体不符、标示不规范、位置不正确、偏位 The contents of the nameplate or warning language are wrong or missing, the content is not clear or the content is not readable, the font is not consistent, the mark is not standard, the position is incorrect, the offset is	符合要求 meet the requirement	S-2		×	
	3. 铭牌粘贴牢固、不得翘起、鼓包、褶皱, 以及卷边现象发生, 若不符 Nameplate pasted firmly, no warp, bulge, fold, and crimping, if not match	符合要求 meet the requirement	II		×	
	4. 产品上所有属于印刷标识(如铭牌)须通过丝印擦拭测试(沾清水的布擦拭 15s, 再用沾酒精的布擦拭 15s), 若不符 All printed markings (e.g. nameplates) on the product shall be subject to a screen wipe test (wipe 15s, with water-stained cloth and 15s with alcohol-stained cloth) if they do not match	符合要求 meet the requirement	II		×	
	5. 漏 LOGO, 或者 LOGO 错 Missed LOGO, or LOGO wrong	符合要求 meet the requirement	II		×	
	6. 标识印刷不正确(包括内容、字体大小、清晰度、颜色等), 位置不正确、偏位 Incorrect printing of logo (including content, font size, clarity, color, etc.), incorrect position, misalignment	符合要求 meet the requirement	II		×	
	7. 主机上、运动开关及喷水开关等等部件上丝印不对 Wrong screen printing on the main engine, motion switch and water spray switch and other parts	符合要求 meet the requirement	II			×
	8. 丝印外观不良、刮花、重影、残缺、部分掉字 Screen printing with bad appearance, scraper, double shadow, incomplete, partially dropped	符合要求 meet the requirement	II			×
	9. 充电器插头或者电源线上字唛或者标签上信息错误、位置不正、遗漏或者不可读(涉及到安规信息的判 Ma) Mark or label charger plug or power cord with incorrect information, incorrect position, missing or	符合要求 meet the requirement	II		×	×

	unreadable (Ma for safety information related)					
	10. 各贴纸粘贴不牢固、翘起、鼓包、褶皱 Sticker sticker is not firm, warp, bulge, fold	符合要求 meet the requirement	II			×
	11. 丝印附着力检查: 3M 胶纸测试失败(每个订单抽取 2PCS) Screen printing adhesion check : 3M rubber paper test failed (2PCS per order)	/	S-2			×
	方法: 用 3M 600#胶带,胶带垂直于测试区域, 速度为 50mm/5s Method: Use 3M 600# tape, perpendicular to test area, speed is 50 mm/5s.	/				
	12. 丝印附着力检查: 酒精擦拭测试失败(每个订单抽取 2PCS) Screen printing adhesion check: alcohol wipe test failed (2 PCS per order)	符合要求 meet the requirement	S-2			×
	方法: 用柔软的布蘸湿浓度为 75%以上的工业酒精, 以 2N 的力度来回擦拭 15 秒 METHODS: Dip soft cloth in industrial alcohol with a concentration of more than 75%, and then wipe back and forth for 15 seconds with 2 N's force	符合要求 meet the requirement				
涂层可靠性评估 Coating reliability assessment	1. 百格测试失败 Grid test failed					
	方法: 用百格刀在测试样品表面画 100 个小格, 每条线间隔 1.0mm,线长 40mm, 用 3M 600#胶纸贴在测试区域, 胶带垂直迅速拉起, 速度为 10mm/s Methods : draw 100 small squares on the surface of the test sample with a 100-grid knife, each line is spaced 1.0 mm, line length 40 mm, pasted on the test area with 3 M 600# of adhesive paper, and the tape is pulled up vertically and quickly, and the speed is 10 mm /s.	/	S-2			×
	2. 涂层硬度测试失败 Coating hardness test failure					
	方法: 用硬度为 2H 铅笔按规定以 45 度角,直径 0.8mm 来回测试 20 次后, 涂层被划破 METHODS: The coating is scratched after 20 times test with a hardness of 2 H pencil at 45 degree angle and 0.8 mm diameter	/	S-2			×
产品附件检查 Product accessories inspection	1. 外观检查与第 2 条相同。 Appearance inspection same as article 2.					
	2. 金属管、管子套筒等等零部件互配组装困难 (不易装配, 使用困难) Difficult to assemble (not easy to assemble, difficult to use) metal pipe, tube sleeve, etc.	符合要求 meet the requirement	II			×
	3. 正确组装后无法正常使用 Can not be used properly after proper assembly					
产品装配 Product Assembly	1. 各部件配合间隙超过规格要求 (对于 A 面: 小于等于 0.2mm 可接受,大 于等于 0.5mm 判 Ma, 在此之间的判 Mi; 对于 B 面: 大于等于 0.5mm 判 Mi,小于 0.5mm 可接受)	符合要求 meet the requirement	S-2			×
						×

	The fit gap of each component exceeds specification requirement (for A side: less than 0.2 mm acceptable, greater than 0.5 mm award Mi; between sides: greater than 0.5)					
	2. 各部件单个连续美工线不一致(计算美工线宽度的最大处与最小处之差, 对于 A 面: 小于等于 0.5mm 可接受, 大于等于 1.0mm 判 Ma, 在此之间的判 Mi; 对于 B 面: 大于等于 1.5mm 判 Mi, 小于 1.0mm 可接受) For each component a single continuous art line is inconsistent, (The difference between the maximum and the minimum of the width of the lines is calculated. For A sides: less than 0.5 mm acceptable, greater than 1.0 Ma, For B sides: greater than 1.5 mm less than 1.0 acceptable)	符合要求 meet the requirement	II		×	×
	3. 各部件配合错位(对于 A 面: 小于等于 0.2mm 可接受, 大于等于 0.8mm 判 Ma, 在此之间的判 Mi; 对于 B 面: 大于 0.5mm 判 Mi) Parts fit misalignment (for A sides: less than 0.2 mm acceptable, greater than 0.8 Ma, between awards Mi; for B sides: greater than 0.5)	符合要求 meet the requirement	II		×	×
	4. 装配遗漏、错误装配, 装配不到位、不安全的装配(导致安全问题判 Cr) Assembly omission, misassembly, assembly not in place, unsafe assembly (Lead to safety issues Cr)	符合要求 meet the requirement	II	×	×	
	5. 螺丝锁附不良(如果是只有一颗螺丝固定的判 Ma, 有多个螺丝固定的判 Mi) Poor locking of screws (if only one screw secured Ma, multiple screws secured Mi)	符合要求 meet the requirement	II		×	×
	5. 摇机检查异物(金属判 Cr, 塑胶判 Ma) Shake machine to check foreign bodies (metal Cr, plastic Ma)	符合要求 meet the requirement	II	×	×	
	6. 电源线外漏长度不符(以相关安全标准要求以及生产计划单的要求为准) The length of power line leakage inconsistent (subject to relevant safety standard requirements and production plan sheet requirements)	符合要求 meet the requirement	II		×	
产品功能/性能 Product function And performance	1. 按动运动开关, 运动板不能工作 Press the motion switch, the motion plate can not work	符合要求 meet the requirement	S-2		×	
	2. 按动喷水开关, 产品不能喷水, 或喷水偏小、分叉, 喷水范围达不到 18.5-28.5CM Press the water spray switch, the product can not spray water, or water spray small, fork, water spray range can not reach 18.5-28.5 CM	符合要求 meet the requirement	II		×	
	3. 喷水距离达不到 16-40CM, 产品漏水 Spray distance is less than 16-40 CM, product leaks	符合要求 meet the requirement	II		×	
	4. 运动板工作时声音杂音 Noise in motion panel working	符合要求 meet the requirement	II		×	

<p>5. 运动板转速达不到 900+/-10%转/min 要求, (每个订单抽取 2PCS)</p> <p>Motion plate speed less than 900+/-10% rpm ,(2 PCS per order)</p>	<p>符合要求 meet the requirement</p>	<p>II</p>		<p>×</p>	
<p>6. 指示灯亮度检查</p> <p>Indicator brightness check</p> <p>(1) 产品在正常运行时, 其指示灯的亮度如在正常环境下 (40W 日光灯亮度的环境下) 使观察者在距离器具 0.6 米远的地方模糊不清; 或同一台产品上, 二个 LED 灯亮的颜色不一致, 色差。</p> <p>When the product is in normal operation, the brightness of its indicator light such as in normal environment (40 W fluorescent light brightness environment) blurred the observer 0.6 meters away from the appliance; or on the same product, the color of the two LED lights is inconsistent, there is color difference.</p>	<p>符合要求 meet the requirement</p>	<p>II</p>		<p>×</p>	
<p>7. 整机地刷噪音应≤71dBA, (每个订单抽取 2PCS)</p> <p>Floor brush noise should ≤ 71 dBA,(2 PCS per order)</p>	<p>符合要求 meet the requirement</p>	<p>S-2</p>		<p>×</p>	
<p>8. 产品不能充电或充不满电</p> <p>Product can not be charged or charged</p>	<p>符合要求 meet the requirement</p>	<p>S-2</p>		<p>×</p>	
<p>9. 产品电量不足进行充电时电量指示灯不闪</p> <p>The electric indicator does not flash when the power of the product is insufficient</p>	<p>符合要求 meet the requirement</p>	<p>II</p>		<p>×</p>	
<p>10. 产品电量不足, 用充电器充电时, 绿灯不会转红灯</p> <p>When the power of the product is insufficient, when charging with charger, the green light will not turn red light</p>	<p>符合要求 meet the requirement</p>	<p>II</p>		<p>×</p>	
<p>11. 产品充满电后, 模拟正常使用时低于 50 分钟(每个订单抽取 4PCS, 充满电后送测试室做模拟正常使用测试)</p> <p>Simulated normal service time is less than 50 minutes after the product is fully charged (sample per order)</p> <p>4PCS, full charge evacuation test room for simulated normal use test)</p>	<p>符合要求 meet the requirement</p>	<p>S-2</p>		<p>×</p>	
<p>12. 遥控失灵, 时有时无</p> <p>Remote control failure, sometimes absent</p>	<p>符合要求 meet the requirement</p>	<p>II</p>		<p>×</p>	
<p>13. 模拟正常使用时, 万向节前后左右转动到正常角度时, 产品停止工作</p> <p>When simulating normal use, the product stops working when the universal joint turns left and right to a normal angle</p>	<p>符合要求 meet the requirement</p>	<p>II</p>		<p>×</p>	
<p>14. 模拟正常使用时, 站立座偏紧或偏松</p> <p>Stand seat is tight or loose when simulated for normal use</p>	<p>符合要求 meet the requirement</p>	<p>II</p>		<p>×</p>	

	<p>15. 拆开包装,发现线路板无休眠功能</p> <p>Disassemble the package and find that the circuit board has no sleep function</p>	符合要求 meet the requirement	II		×	
	<p>16. 启动电源开关至开和关档按钮,开关有功能且灵活,开关不能松动,滑钮无卡阻,连续检查3次功能均应正常且无异常现象产生,否则</p> <p>Activate the power switch to the switch and switch button, the switch is functional and flexible, the switch can not be loosened, the sliding button without blocking, three consecutive checks should be normal and no abnormal phenomenon, otherwise</p>	符合要求 meet the requirement	II		×	
安全 检查 Security Check	<p>1. 耐压测试</p> <p>Pressure test</p>	符合要求 meet the requirement	S-2		×	
	<p>以 AC3000V/100mA /1min 测试充电器插头外壳部分,无报警为合格;</p> <p>A C 3000V /100m A /1m in test charger plug housing part, no alarm as qualified;</p>					
	<p>2. 泄漏电流测试</p> <p>Leakage current test</p>	符合要求 meet the requirement	S-2		×	
	<p>将电压调至 1.06 倍额定电压下,按正常工作的状态运行,在运行过程中测试充电器插头外壳表面的泄漏电流:</p> <p>Adjust the voltage to 1.06 times rated voltage, run in normal working condition, test the leakage current on the surface of charger plug housing during operation:</p>					
<p>对 II 类器具,应$\leq 0.25\text{mA}$,若不符: ≤ 0.25 for II appliances if not:</p>						
	<p>3. 充电器电源线拉力测试:(每个订单抽取 2PCS 将电源线在最先受应力处剪平,对电源线以最不利方向按以下规定的值施加拉力 25 次,每次持续 1s 钟,测试完毕后,要求电源线不应损坏,并且在端子处不应有明显的张力,软线的径向位移不应超过 2mm。若不符;</p> <p>Charger power cord tension test :(2 PCS for each order to cut the power cord at the first stress ,25 times to the power cord in the most adverse direction according to the following specified value, each lasting 1s clock, after the test, the power cord should not be damaged, and should not be obvious tension at the terminal, the radial displacement of the soft wire should not exceed 2 mm. If not;</p>	符合要求 meet the requirement	S-2		×	
	<p>如器具的重量$\leq 1\text{kg}$,施加拉力 30N</p> <p>If the weight of the appliance ≤ 1 kg, the applied tension is 30 N.</p>					
	<p>3. 螺丝连接要求</p> <p>Screw connection requirements</p>	符合要求 meet	S-2		×	
	<p>(1) 螺钉的选择要求根据生产工艺和材料特</p>					

	<p>性选择合适的螺钉，螺钉孔和螺钉柱都要求精确，螺钉的固定方式不能采用快速不干胶代替；螺钉的固定应充分接触被固定表面，不能出现打穿、打爆螺钉柱而导致螺钉露出尖角，若不符：</p> <p>The selection of screws requires the selection of suitable screws according to the production process and material characteristics, the screw holes and screw posts are required to be accurate, and the screw fixing method can not be replaced by quick adhesive; the screw fixing shall be in full contact with the fixed surface and shall not cause the screw to expose the sharp angle by piercing and exploding the screw post, if not:</p>	the requirement				
	<p>(2) 螺钉在下表格的扭力测试时不能出现滑牙、滑丝的现象，若不符：</p> <p>Screws shall not slip teeth or silk during torsion testing in the following table. If they do not match:</p>					
	<p>螺丝的标称直径力矩， kgf.cm</p> <p>Nominal diameter of screws torque, kgf.cm</p>					
	<p>(外螺纹直径， mm)</p> <p>(External thread diameter, mm)</p>					
	<p>≤2.8 4.0</p>					
	<p>>2.8 和 ≤3.0 5.0</p>					
	<p>>3.0 和 ≤3.2 5.0</p>					
	<p>>3.2 和 ≤3.6 6.0</p>					
	<p>>3.6 和 ≤4.1 6.0</p>					
	<p>>4.1 和 ≤4.7 9.0</p>					
	<p>>4.7 和 ≤5.3 10.0</p>					
	<p>>5.3 12.5</p>					
<p>拆机内部机构检查(每个订单抽取 2PCS)</p> <p>Internal inspection of dismantling machines (2 PCS per order)</p>	<p>1. 螺丝滑牙,漏打, 错打, 打毛或松动、未锁紧、生锈</p> <p>Screws slip teeth, miss, miss, hair or loose, unlocked, rusty</p>	符合要求 meet the requirement	S-2	×		
	<p>2. 端子未接上,松动或拉力测试不符合</p> <p>Terminal is not connected, loose or tension test does not meet</p>	符合要求 meet the requirement	S-2	×		
	<p>3. 内部线绝缘层损坏(露铜判 Cr;未漏铜但高压失败判 Cr; 其他 Ma)</p> <p>Internal wire insulation damage (exposed copper Cr; not leaking copper but high pressure failure Cr; others Ma)</p>	符合要求 meet the requirement	S-2	×	×	
	<p>4. 变形、线芯露出、飞线、破损线头太短或太长, 夹帽拉力不符合</p> <p>Deformation, wire core exposed, fly line, broken wire head too short or too long, cap pull does not match</p>	符合要求 meet the requirement	S-2	×		
	<p>5. 出现压线, 线损伤, 排线不良,缺扎线带</p>	符合要求 meet the	S-2	×		

	Pressure line, line damage, poor wiring, lack of tie line band	requirement				
	6. 硅胶管未连接到位, 卡簧未固定到位 Silicone tube not connected in place, clip spring not fixed in place	符合要求 meet the requirement	S-2		×	
	7. 装配漏零部件或未装到位 Parts assembled not enough or missing.	符合要求 meet the requirement	S-2		×	
	8. 多余的,不正确的,缺料,飞边,损坏的部件等 Excess, incorrect, missing material, flash, damaged parts, etc.	符合要求 meet the requirement	S-2		×	
	9. 关键部件与认证 CDF 要求不相符 Key components do not meet certification CDF requirements	符合要求 meet the requirement	S-2		×	
钢管 Steel Pipe	测量钢管长度 Steel pipe length measurement	符合要求 meet the requirement	S-2		×	
跌落 Fall	包装跌落测试(每个订单抽取 2 箱) Packing drop test (2 cases per order)	符合要求 meet the requirement	S-2	×	×	
	(1)试验前应确保卡通箱装入的产品的外观及功能为合格, 且照产品包装规格包装; Before testing, make sure that the appearance and function of the product loaded in the cartoon box are up to standard and packaged according to the packaging specification;					
	(2) 整箱依据包装箱加产品的重量按以下规定选择跌落高度: The drop height of the whole box shall be chosen according to the weight of the packing box plus the product as follows:					
	毛重 (kg) 高度(mm) Gross weight (kg) Height (mm)					
	<10 970					
	10≤kg<19 810					
	19≤kg<28 660					
	28≤kg<45 510					
	45≤kg<68 310 (3)					
	每箱按一角三边六面的顺序共跌落 10 次 Each box dropped in total 10 times with one corner, three sides and six sides					
A 包装箱的最不利角 (一般指粘合角) The most unfavorable angle of the packing case (usually the adhesive angle)						
B 由此角辐射的 3 条边 The three edges of this angular radiation						
C 包装箱的六面 Six sides of the box						
检验结论 Conclusion: <input checked="" type="checkbox"/> 合格 Conclusion: <input type="checkbox"/> 不合格 Unqualified: <input type="checkbox"/> 待定 To be discussed		检验员 Examiner: 方少君 核准 Approval: 徐建荣				

不合格处理 Unqualified handling: 退货 Unqualified handling 让步接收 Accept conditional 其它 Others

不合格评审
Unqualified
Judgement

原因描述:

Reason and description:

签名:

Signature:

最终判定:

Final judgement:

签名:

Signature:

附图示 Pictures are attached

检查记录 Inspection Record

仓库摆放检查 Warehouse storage inspection



外箱印字检查 Outer box printing inspection





外箱尺寸检测 Outer box size inspection





拆箱检查 Outer box opening



彩盒印字检查 Gift box printing inspection

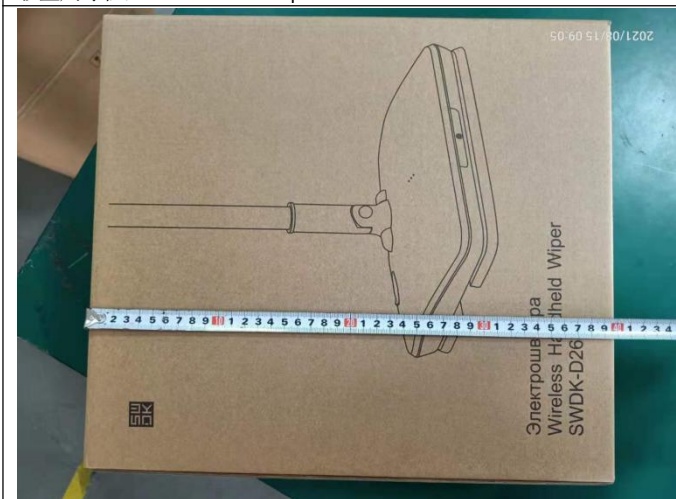
彩盒底部印字检查 Gift box bottom printing inspection



彩盒条码检查 Gift box bar code inspection



彩盒尺寸检查 Gift box size inspection





彩盒拆箱检查 Gift box opening



整机配置检查 Configuration inspection







充电器检查 Adapter inspection

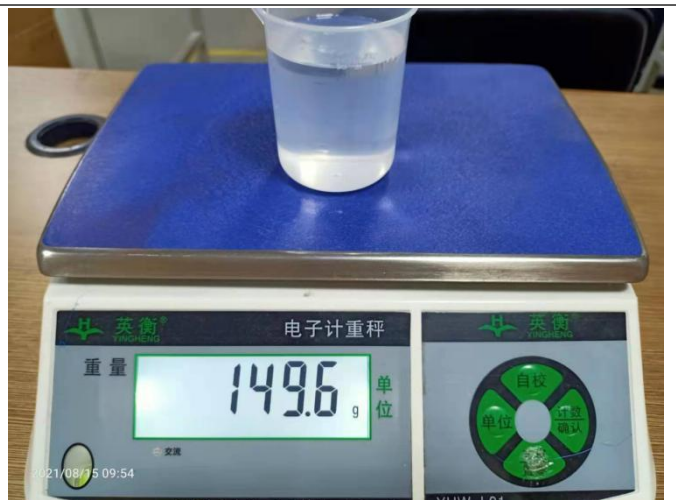


充电器线长检查 Adapter cord length inspection



量杯检查 Measuring cup inspection

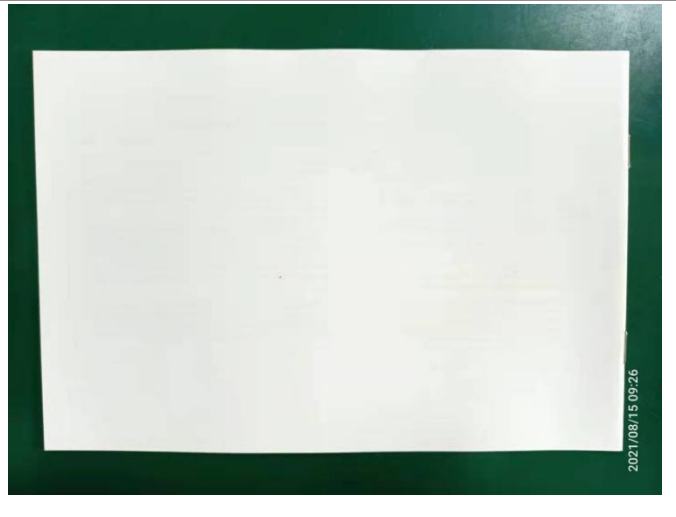
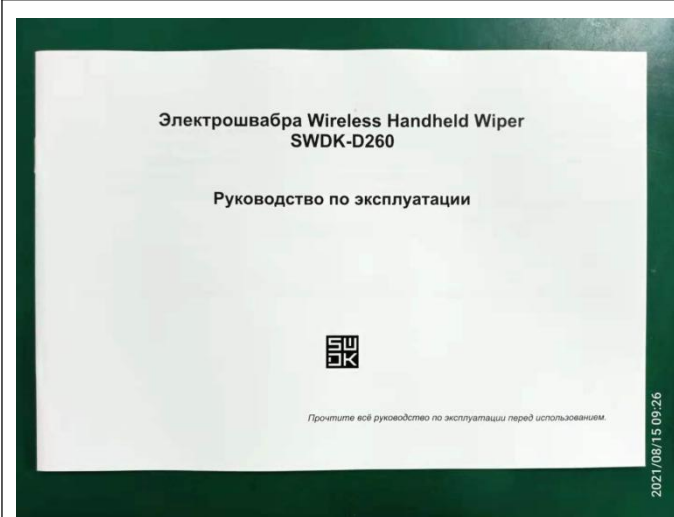


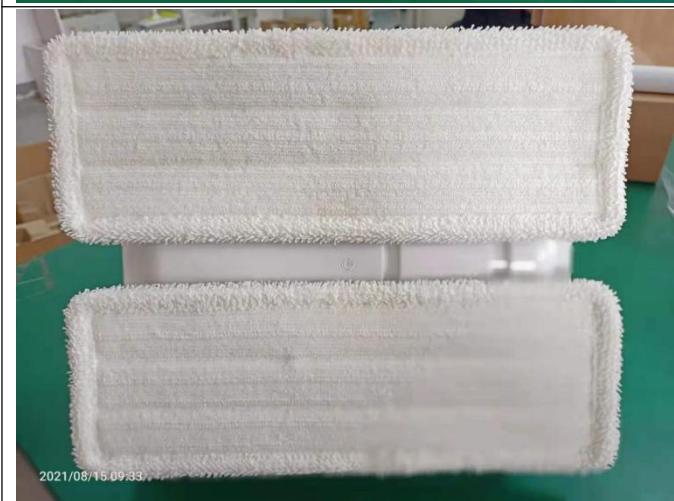


水箱检查 Water tank inspection



说明书检查 User manual inspection





产品净重毛重检测 Product net weight and gross weight inspection

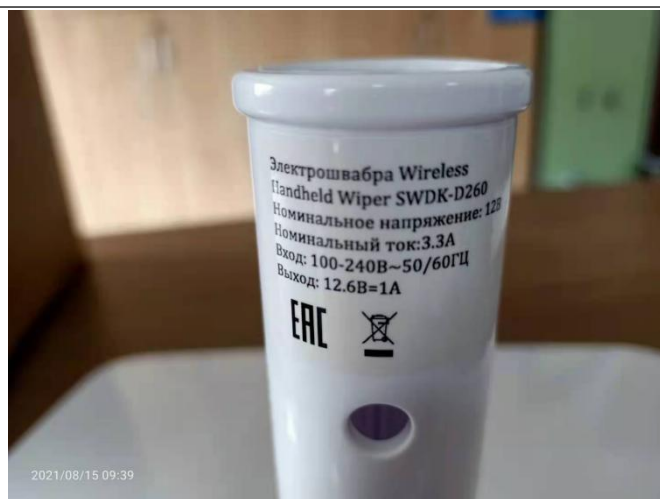


整机外观检查 Machine appearance inspection

充电口检查 Charging port inspection



印字和铭牌检查 Printing and nameplate inspection



充电检查 Charging inspection



喷水检查 Water spray inspection



运动板转速检测 Motion board rotation speed inspection



整机噪音检测 Machine noise inspection



充电器耐压检测 Adapter voltage withstand test

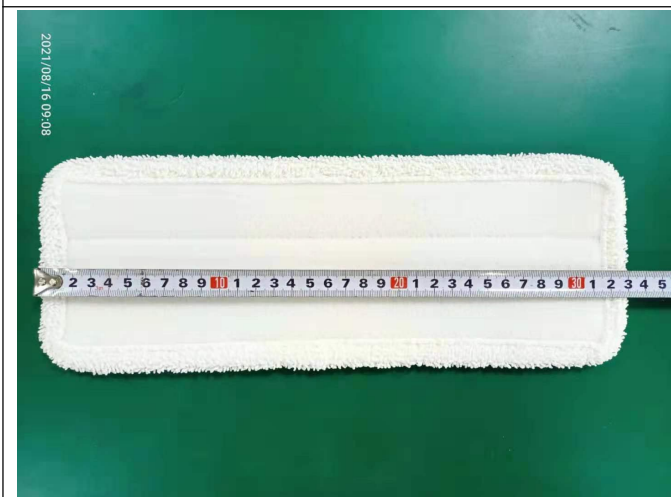
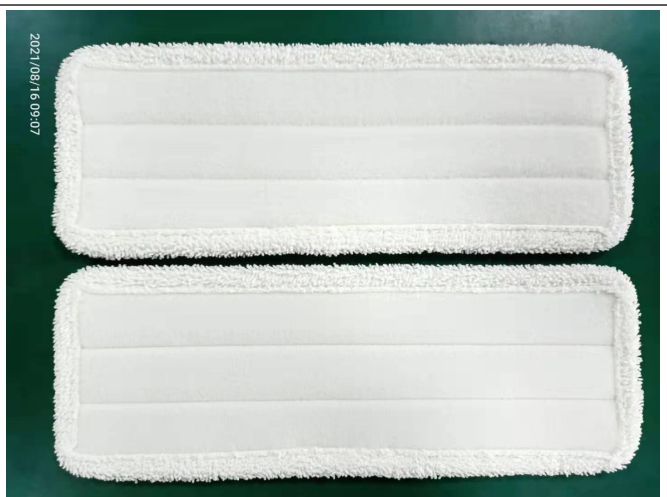
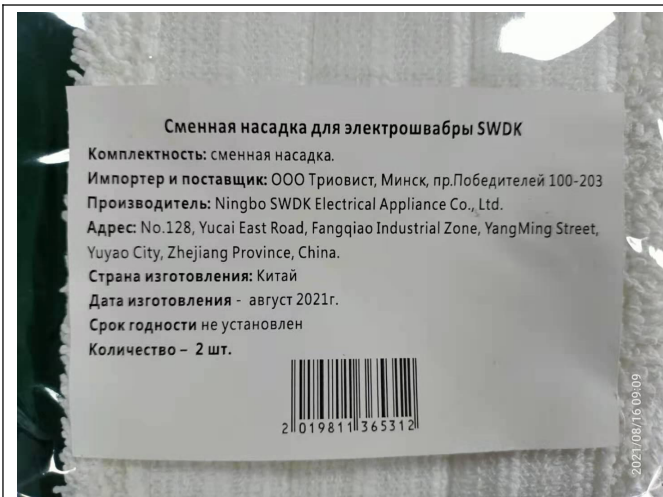


整机充满电运行检测 Operation inspection after fully charge the machine

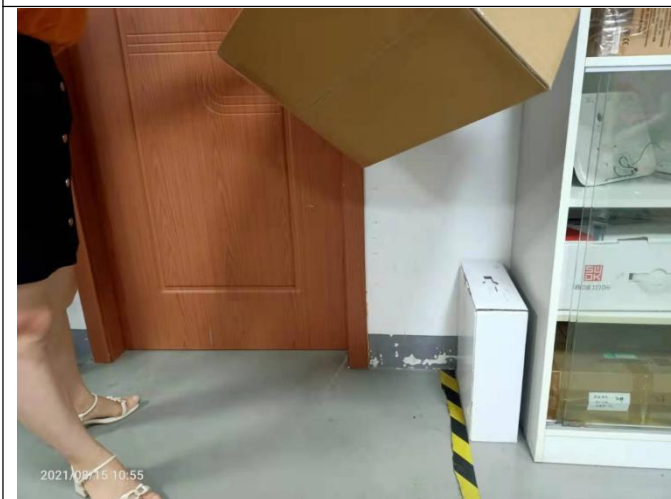


另购拖布 (365 套)





跌落测试 Drop test





整机组装检查 Machine assembly inspection



拆机检查 Disassembly inspection

