



EN ■ Metal Desktop Fan

Metal Desktop Fan

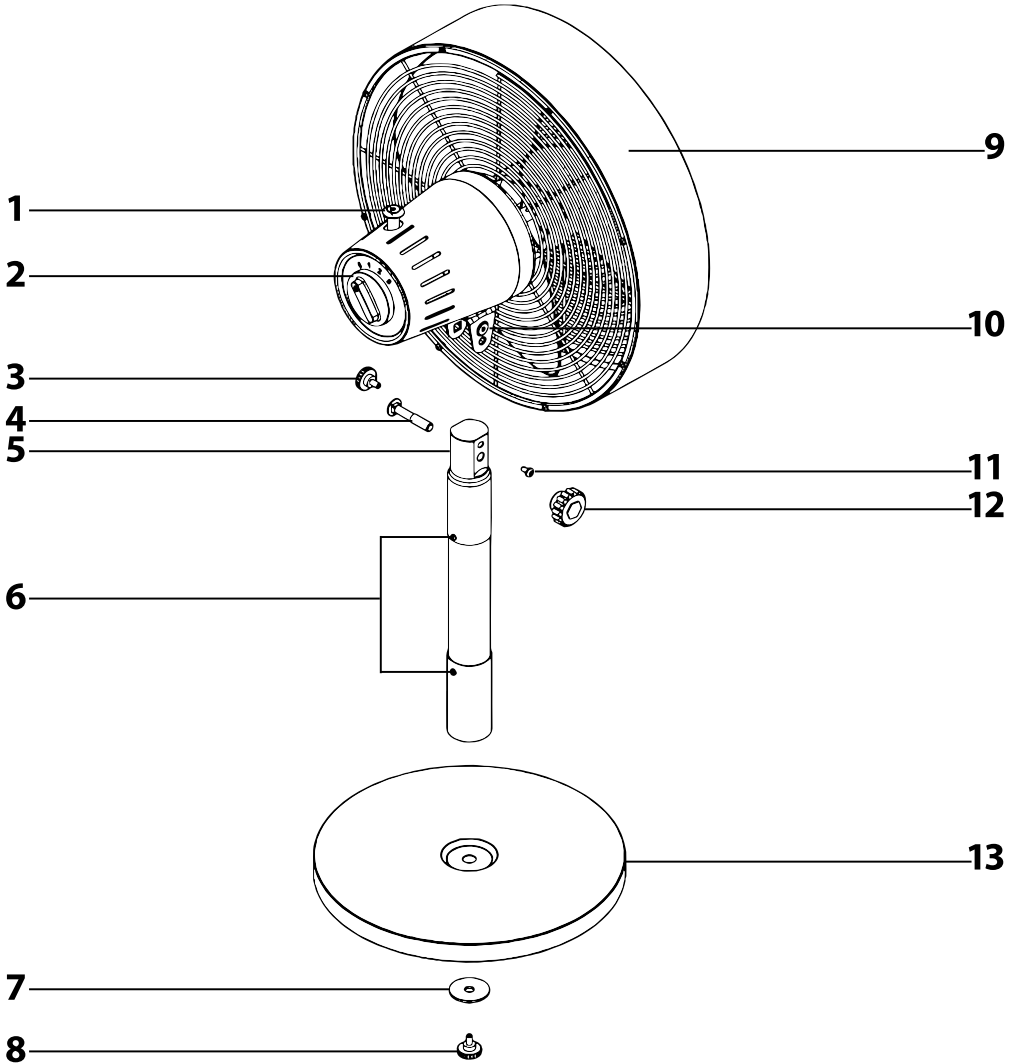
Important safety instructions

READ CAREFULLY AND STORE FOR FUTURE USE.

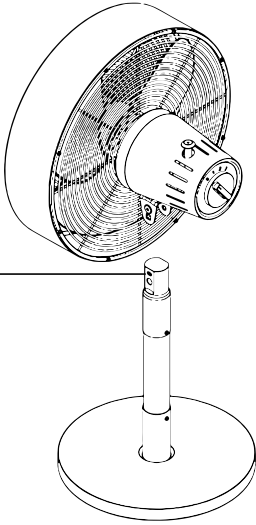
- This appliance may be used by children 8 years of age and older and by persons with physical or mental impairments or by inexperienced persons, if they are properly supervised or have been informed about how to use the product in a safe manner and understand the potential dangers. Cleaning and user maintenance must not be performed by children unless they are older than 8 years of age and under supervision. Keep this appliance and the power cord out of reach of children that are younger than 8 years of age. Children must not play with the appliance.
- Before connecting the appliance to a power socket, check that the rated voltage on its rating label matches the electrical voltage in the power socket.
- Connect the appliance only to a properly grounded socket.
- The appliance is designed for use at home, in offices and similar types of areas. Do not use it in very dusty or humid rooms such as laundries or bathrooms, in areas where chemical or explosive substances are stored, in industrial surroundings or outdoors.
- Do not place the appliance in the vicinity of an open flame or appliances that are sources of heat.
- Do not place the appliance on unstable surfaces such as carpets with very long and thick fibres. The appliance may only be used on a dry, stable, smooth and horizontal surface.
- Only use original parts to assemble the appliance. Before starting to assemble the appliance, make sure that it is turned off and disconnected from the power socket.
- Prior to connecting the appliance to a power socket, make sure that the appliance is correctly assembled according to the instructions in this user's manual. Do not start the appliance without the protective grills properly installed.
- Do not touch the appliance with wet or damp hands. This applies especially when it is connected to a power socket.
- Do not cover the appliance with any items while it is running. Never insert fingers or other items through the protective grille.

- Avoid coming into contact with the rotating parts of the appliance.
- Never submerge the appliance or its power cord in water or any other liquid and do not wash it under running water.
- Make sure the power cord does not hang over the edge of a table or that it is not touching a hot surface.
- Always turn off the appliance and disconnect it from the power socket when leaving it without supervision, when not using it and before moving, disassembling or cleaning it.
- Never attempt to remove the protective cover of the motor unit.
- Disconnect the appliance from the power socket by pulling on the plug, never pulling on the power cord. Otherwise, this could damage the power cord or the socket.
- If the power cord is damaged, it must be replaced by an authorised service centre or by another similarly qualified person, this will prevent the creation of a dangerous situation. It is forbidden to use the appliance if it has a damaged power cord.
- Do not use the appliance if it is not working correctly, if it has been damaged or has been submerged in water. To avoid a hazardous situation arising, do not repair the device yourself or modify it in any way. Have all repairs performed at an authorised service centre. By tampering with the appliance, you risk voiding your legal rights arising from unsatisfactory performance or quality warranty.

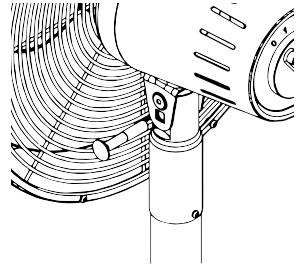
A



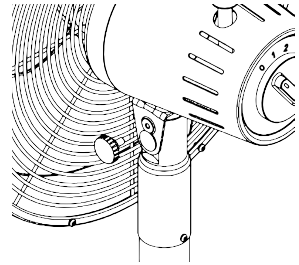
B



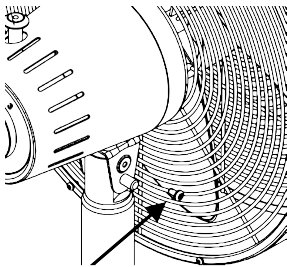
C



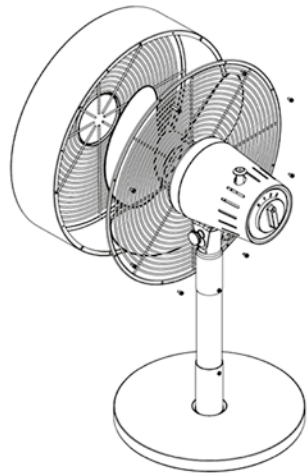
D



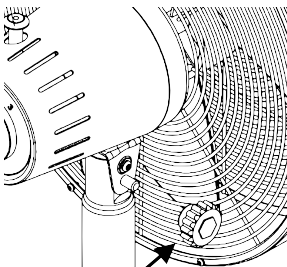
E



G



F



- Prior to using this appliance, please read the user's manual thoroughly, even in cases, when one has already familiarised themselves with previous use of similar types of appliances. Only use the appliance in the manner described in this user's manual. Keep this user's manual in a safe place where it can be easily retrieved for future use.
- We recommend saving the original cardboard box, packaging material, purchase receipt and responsibility statement of the vendor or warranty card for at least the duration of the legal liability for unsatisfactory performance or quality. In the event of transportation, we recommend that you pack the appliance in the original box from the manufacturer.

DESCRIPTION OF THE APPLIANCE

- A1** Horizontal oscillation toggle switch
A2 Knob for setting the fan speed and turning it off
 0 – off, I – low speed, II – medium speed, III – high speed
A3 Small knob for setting the tilt angle of the fan head
A4 Connecting bolt
A5 Top part of fan head holder
A6 Fan head holder
A7 Base washer
A8 Base screw
A9 Fan head
A10 Fan head mounts
A11 Fastening screw
A12 Large knob for setting the tilt angle of the fan head
A13 Base
- B1** Top narrow hole



Note:

The fan is supplied disassembled. Its parts have been designed to fit together properly and to enable you to easily disassemble, clean and store it as required.

BEFORE ASSEMBLING

- Take the appliance and its accessories out of the packaging materials. Before disposing of the packaging materials, make sure that no part of the appliance is missing.

ASSEMBLING THE APPLIANCE

- Screw the large knob **A12** and the connecting bolt **A4** out of the fan head holder **A6**. Then screw the base screw **A8** off the holder and remove the washer **A7**. Put it aside.
- Place the fan head holder **A6** on to the base **A13** and into the hole on the underside of the base **A13** screw in the screw **A8** with the washer **A7** and tighten it firmly. Stand the base **A13** with the fan head holder **A6** on a horizontal, stable and clean surface.
- Screw the fastening screw **A11** and the small knob **A3** out of the fan head mounts **A10**.
- There are 4 holes – 2 top and 2 bottom in the top part of the fan head holder **A5**. The fastening screw **A11** is inserted into the wide top hole; the small knob **A3** is inserted into the narrow top hole. The bottom holes are round and the connecting bolt **A4** is inserted from one side and the large knob **A12** is inserted from the other side.

- When installing the fan head **A9**, it is important to have the base **A13** turned in the correct direction – see figure B (make sure that the side with the narrow hole **B1** is correctly turned). Install the fan head **A9** on to the top part of the fan holder **A5**. Pull the connecting bolt **A4** through the bottom hole through the fan head mounts and the top part of the fan head holder **A5** – see figure C. Then screw in the small knob **A3** into the narrow hole and tighten it in place – see figure D. Using a screwdriver, screw in the fastening screw **A11** – see figure E. Finally, screw in the large knob **A12** – see figure F.

OPERATING THE APPLIANCE

- Place the fan on a horizontal, stable, dry and smooth surface within reach of a power socket. Connect the power cord to a power socket. Before connecting to a power socket, ensure that the fan is correctly assembled.

SETTING THE SPEED AND TURNING OFF THE FAN

- To set the air flow speed, use knob **A2**. The individual positions of knob **A2** are described below:
 0 – turn off the fan;
 I – low air flow speed setting;
 II – medium air flow speed setting;
 III – high air flow speed setting.
- When you have finished using the fan, always turn it off by setting knob **A2** to position 0 (off) and disconnect it from the power socket.

SETTING HORIZONTAL OSCILLATION

- The horizontal oscillation of the fan head **A9** can be set using the toggle switch **A1**. When the fan is running, push down the toggle switch **A1** to start horizontal oscillation. The fan head **A9** will oscillate from side to side at an angle of approximately 80°.
- To turn off the oscillation, pull up the toggle switch **A1**.

SETTING THE TILT ANGLE OF THE FAN HEAD

- Make sure that the fan is turned off before setting the tilt angle of the fan head **A9**. Loosen the small and large knob, and holding the fan head, set the required tilt angle and then tighten the small and large knob.



Note:

The fan head **A9** may only be tilted up and down in a limited range. Do not set the tilt angle by force.

CLEANING AND MAINTENANCE

- Before cleaning it, make sure that the fan is turned off and disconnected from the power socket.
- Keep the fan clean. Before cleaning, turn the fan off and disconnect the power cord from the power socket. Do not disassemble the fan.
- To clean the outer surface of the of the fan, use a clean, lightly dampened cloth. Then wipe everything so that it is thoroughly dry. Make sure that when cleaning, no water leaks into the motor unit **A7**.
- Do not submerge the fan or its power cord in water and do not wash it under running water.
- For cleaning do not use steel wool, cleaning products with an abrasive effect, petrol and other solvents.
- The fan blades may also be cleaned using a vacuum cleaner with a brush nozzle fitted. First it is necessary to remove the front protective grille by removing the screws located on the outer edge of the rear protective grille – see figure G.

STORAGE

- When not using the fan for an extended period of time, store it in a clean, dry location that is out of children's reach.

TECHNICAL SPECIFICATIONS

SFE 3080WH

Rated voltage range.....	220–240 V
Rated frequency	50/60 Hz
Rated power	35 W
Noise level.....	62 dB(A)
Fan blade diameter.....	30 cm
Maximum air flow of the fan	36.13 m ³ /min
Operation value	1.23 (m ³ /min)/W
Maximum air flow speed.....	2.54 m/s
Standard for measuring the operating value	IEC 60879:1986+cor1:1992
Contact for further information.....	FAST ČR, a.s., Černokostecká 1621, 251 01 Říčany, Czechia

The declared noise emission level for fan model SFE 3080WH is 62 dB(A), which represents a level A of acoustic power with respect to a reference acoustic power of 1 pW.

We reserve the right to change text and technical specifications.

INSTRUCTIONS AND INFORMATION REGARDING THE DISPOSAL OF USED PACKAGING MATERIALS

Dispose of used packaging material at a site designated for waste in your municipality.

DISPOSAL OF USED ELECTRICAL AND ELECTRONIC EQUIPMENT



This symbol on products or original documents means that used electric or electronic products must not be added to ordinary municipal waste. For proper disposal, renewal and recycling hand over these appliances to determined collection points.

Alternatively, in some European Union states or other European countries you may return your appliances to the local retailer when buying an equivalent new appliance.

Correct disposal of this product helps save valuable natural resources and prevents potential negative effects on the environment and human health, which could result from improper waste disposal. Ask your local authorities or collection facility for more details.

In accordance with national regulations penalties may be imposed for the incorrect disposal of this type of waste.

For business entities in European Union states

If you want to dispose of electric or electronic appliances, ask your retailer or supplier for the necessary information.

Disposal in other countries outside the European Union

This symbol is valid in the European Union. If you wish to dispose of this product, request the necessary information about the correct disposal method from the local council or from your retailer.



This product meets all the basic requirements of EU directives related to it.