

lamp / O-RING

capri junior

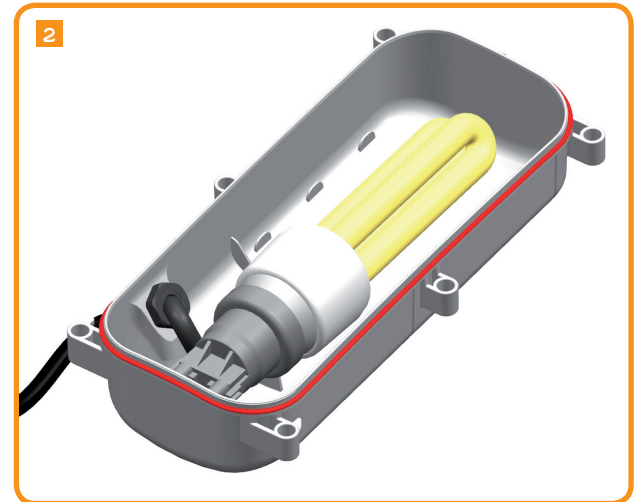
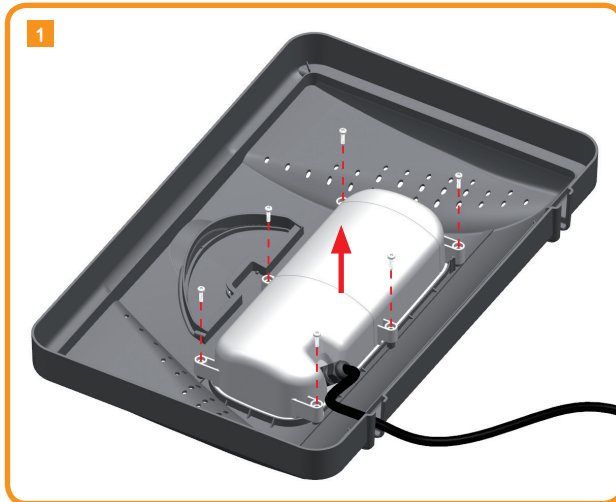


N.B. Prima di svolgere qualsiasi operazione, scollegare la spina dalla rete di alimentazione.

Avant d'effectuer toute opération, débrancher la prise du courant électrique.

N.B. Before carrying out any installation it is recommended to pull out the plugs from the power supply.

Vor sämtlichen Installationsarbeiten sollte die Stromversorgung unterbrochen werden.



3

