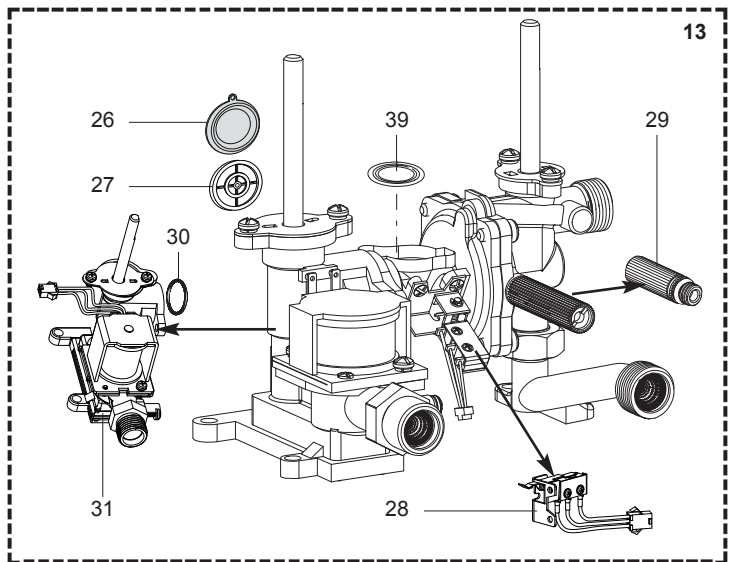
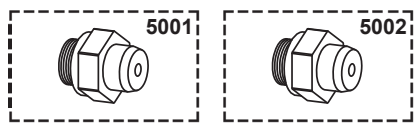
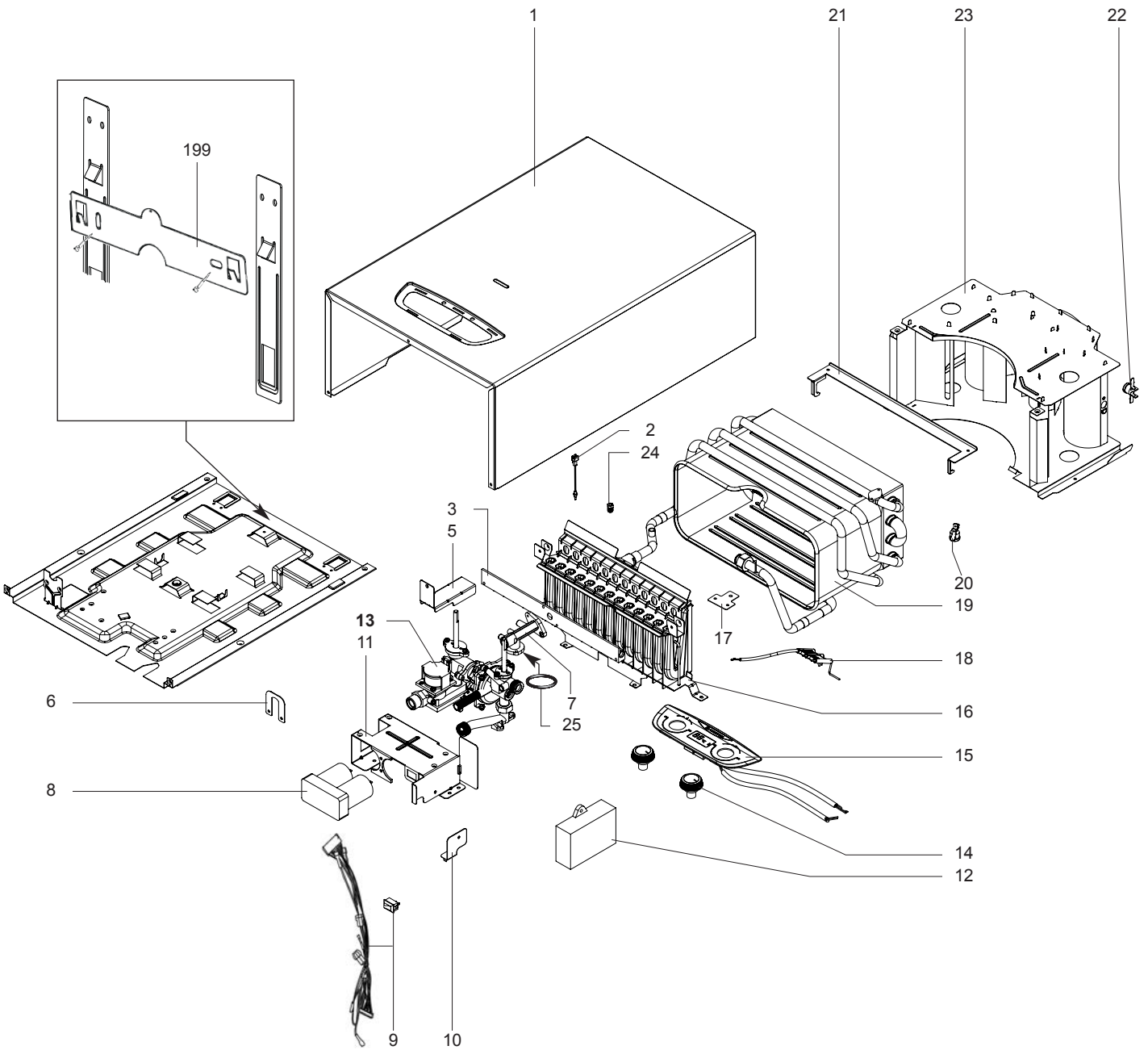




SPARE PARTS EXPLODED VIEW
INSTANTANEOUS GAS WATER HEATERS
Model
FAST R DISPLAY 14L NG

R8218640-02 - 13/09/2021

1	3632714	FAST R DISPLAY 14L NG	02-2021	-
Col	Reference	Model type	Begin	End



LIST OF THE ABBREVIATIONS

HW	: Hot water.
CW	: Cold water.
C	: Ceramic resistance (normal heating).
Ca	: Ceramic resistance (accelerated heating)
TP	: Immersion heater.
1F	: With fittings.
2F	: Without fittings.
3F	: With fittings and another outlet connection.
AMI	: With mixing valve.
SMI	: Without mixing valve.
PUISS	: Power of th appliance.
PN	: Appliance with normal pression.
LP	: Appliance with low pression.
PV	: Appliance with variable power.
PF	: Appliance with fixed power.

IDENTIFICATION PLATE

SERIAL NUMBER

5 Characters :

FD 8 61 (from 01/98 to 12/99)

Month of manufacture : from 61 to 72 → January to December
 Year of manufacture : 8 → 1998
 9 → 1999

OR

5 Characters :

FD 0 81 (from 01/00)

Month of manufacture : from 81 to 92 → January to December
 Year of manufacture : 0 → 2000
 1 → 2001
 2 → 2002
 etc ...

6 Characters :

FD 83 05

Month of manufacture
 Year of manufacture : 83 → 2003
 84 → 2004