



**EUGÈNE PERMA**  
PROFESSIONNEL | PARIS

# CARMEN

## TON SUR TON

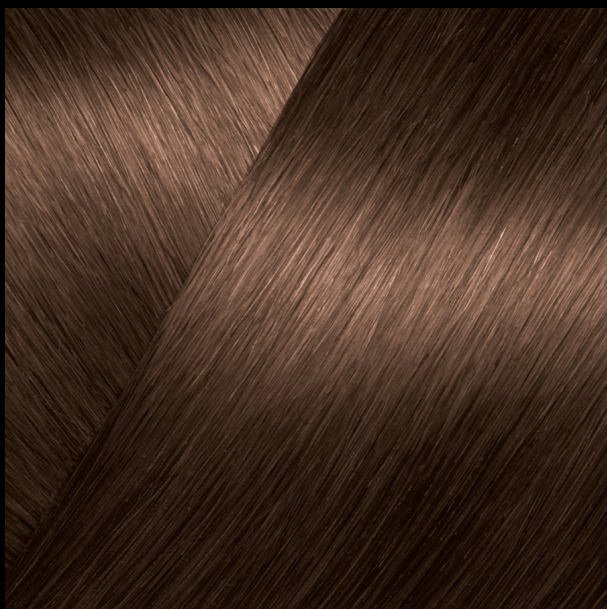
### The science of absolute color

EUGÈNE PERMA Professionnel's **first ammonia-free DEMI PERMANENT HAIR COLOR** that amplifies tones and shine.

A personalized color combining accentuated undertones with extreme shine thanks to the **REFLECT MAGNETIC SYSTEM**.

The **REFLECT MAGNETIC SYSTEM** is attracted to the keratin fibers on the surface of the hair shaft like a magnet, smoothing the cuticle and forming a light-reflecting envelope that enhances its color and shine.

Create limitless tone on tone looks with color that enhances the hair's natural tone without changing it and covers the first signs of grey with no 'mismatched roots'.



	THE NATURALS	THE ASHES (1)	THE IRIDESCENT (2)	THE GOLDENS (3)	THE COPPERS (4)	THE MOCHAS (8)
BLACK (1)	1					
DARK BROWN (3)	3	2*10				
BROWN (4)	4			4*35		
LIGHT BROWN (5)	5	5*11 5*15	5*26		5*42	5*8
DARK BLONDE (6)	6	6*12	6*24	6*35	6*4	6*81
BLONDE (7)	7			7*35		7*8
LIGHT BLONDE (8)	8			8*32		

MEN'S SERVICE	THE GLOSS SERVICE	THE TONER SERVICE
grey	G*00	P12
brown	G*21	P02
chestnut	G*34	P23
blonde	G*40	
	G*60	
	G*62	

The  
Carmen  
tone-on-tone  
color chart