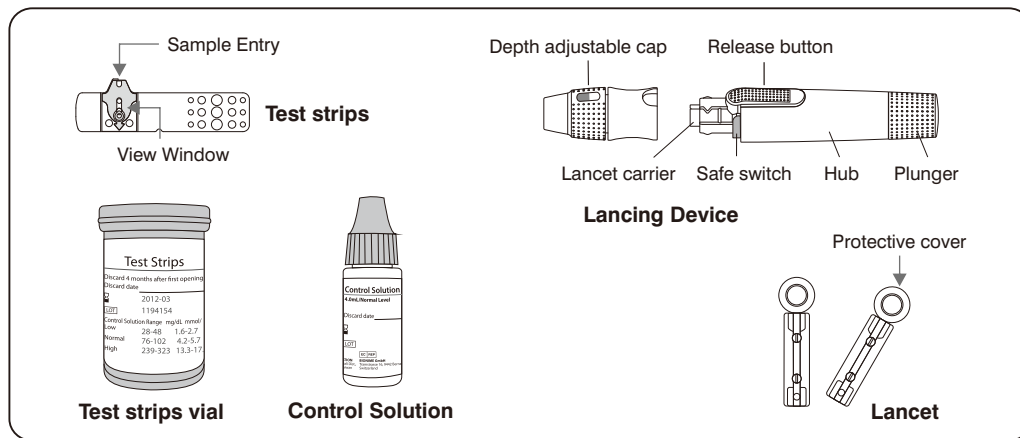
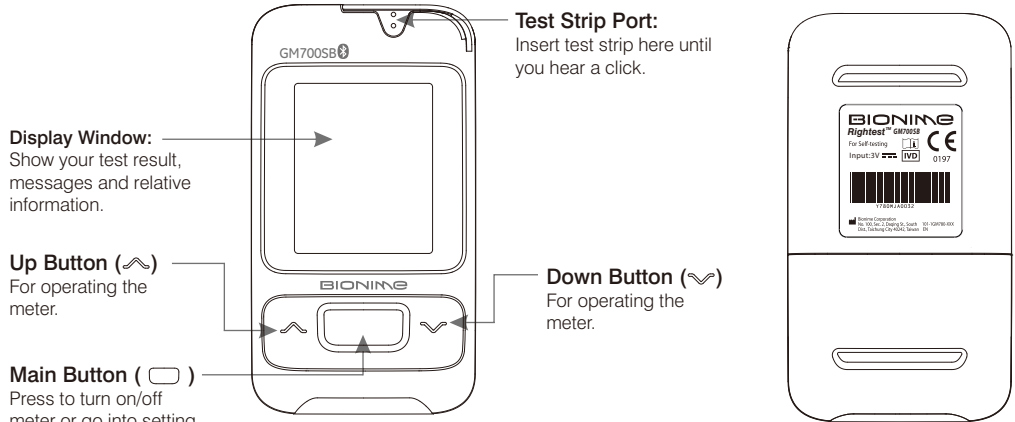


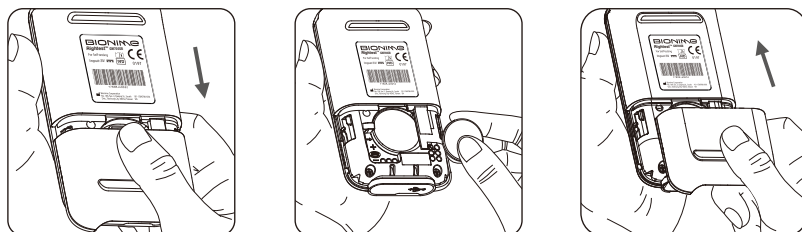
Rightest® Blood Glucose Meter GM700SB Getting Started Guide (For self-testing)

Read the manual before your operation, this Getting Started Guide is only for reference.



1 Installing the Batteries

- 1) Turn the meter over. Press and push battery cover to open.
- 2) Install the battery. Be sure to put battery in correct direction.
- 3) Slide the battery cover back until it snaps into place.

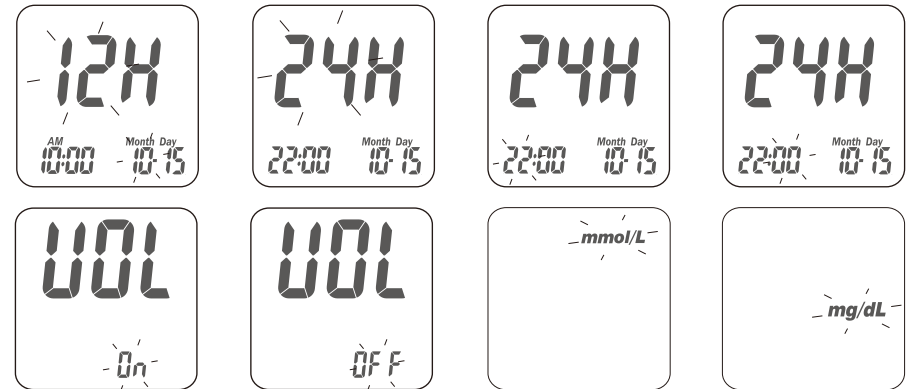


2 Setting Up Your Meter - Set the Date, Time, Volume and Measurement Unit

- 1) Press and release the Main button "□" to turn on the meter.
- 2) Press and hold the Main button "□" for 7 seconds to enter the Setting Mode. The year will flash.
(Note: The meter will turn off while you are holding down the button. Continue holding down the Main button to reach the Setting Mode. You will then be asked to set the year.)
- 3) Press the Left button "↖" or Right button "↘" to change the year.
- 4) Press the Main button "□" to confirm the year and move onto the month setting.



- 5) Repeat step 3 and 4 to change the date, time format, hour, minute, volume and unit. After pressing the main button to confirm the volume setting, your set-up is complete.

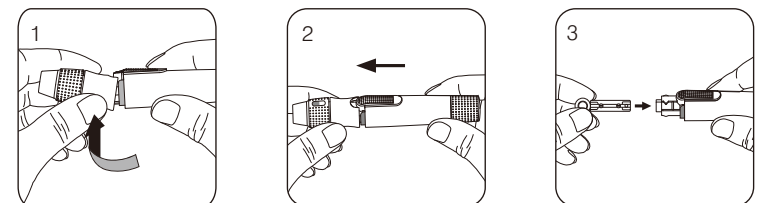


NOTE

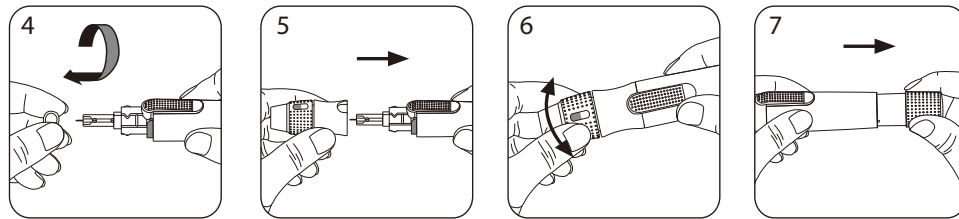
- Suggest not to use this meter close to source of strong electromagnetic radiation, to avoid interference with proper operation.
- Suggest to keep meter free of dust, water or any liquid.

3 Preparing the Lancing Device

- 1) Hold the adjustable depth cap in one hand while holding the base with the other hand. Pull the cap in the down direction. When a gap appears between the cap and base, pull the two parts in opposite directions.
- 2) Remove the adjustable depth cap.
- 3) Insert a new disposable lancet firmly into the lancet carrier.

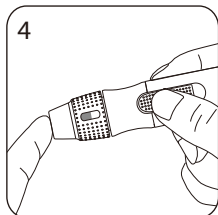
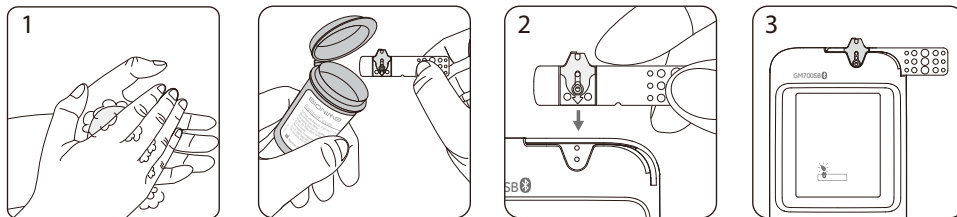


- 4) Twist off and set aside the protective cover of the disposable lancet.
- 5) Replace the depth adjustable cap.
- 6) Choose a depth of penetration by rotating the top portion of the depth adjustable cap until the setting depth matches the window. Settings are based on skin type
 - "I" for soft or thin skin;
 - "II" for average skin;
 - "III" for thick or calloused skin.
- 7) Hold the hub in one hand and pull on the plunger in the other hand. The device will be cocked. Release the plunger, it will automatically move back to its original position near the hub.

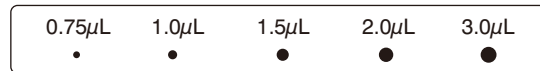


4 Performing a Test

- 1) Wash and dry your hands. Take one test strip from the vial. Close the vial cap immediately.
- 2) Insert the test strip into the test strip port on the meter with the view window facing up. Push the test strip in until you hear a click. The meter will automatically detect the code number.
- 3) When you see the flashing blood drop icon on the display window, hold the lancing device to your fingertip and press the release button.

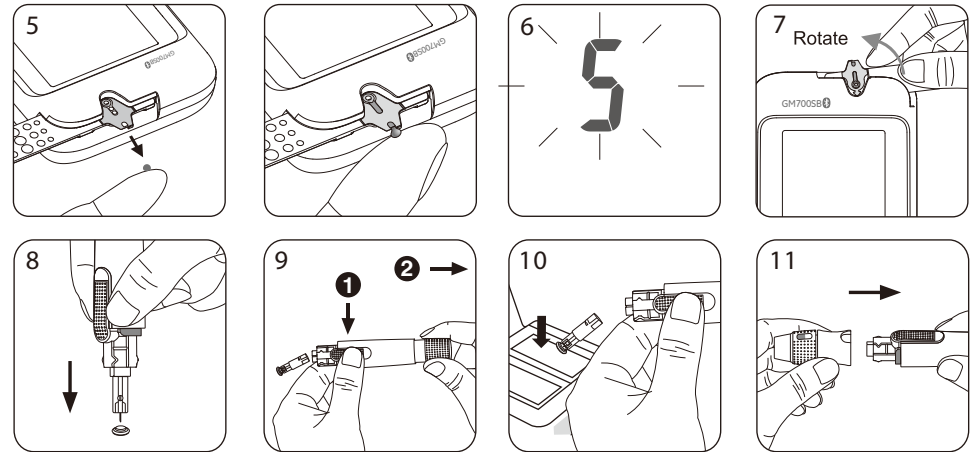


Sample Size Example



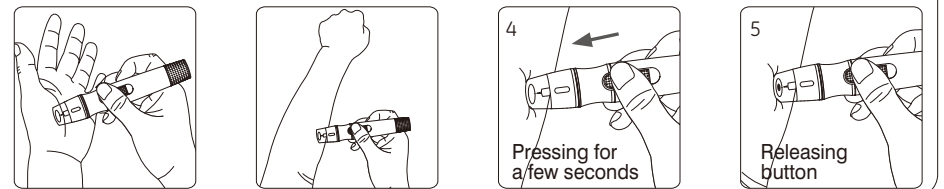
- 4) A blood drop size between 0.75 μ L and 3.0 μ L is required for testing. See Sample Size Example Chart for drop sizes. Blood drop sizes greater than 3.0 μ L may contaminate the meter. A minimum of a 0.75 μ L drop is required for accurate results.
- 5) Touch and hold the drop to the edge of sample port until you hear a "beep" and the view window is filled with blood. If the view window is not completely filled with blood, the test will not start. Discard the test strip and repeat the test with a new test strip.
- 6) The countdown will begin on the display window. After 5 seconds, your test result will appear. For more information about your test results, please see your User's Manual.

- 7) Remove the test strip from the meter. Please follow your local regulations to properly discard the used test strip.
- 8) Pull off the adjustable depth cap. Without touching the used disposable lancet, stick the lancet tip into the protective cover.
- 9) Hold the release button in one hand and pull the plunger with the other hand. This will safely eject the used disposable lancet.
- 10) Discard the used disposable lancet into an appropriate puncture-proof or biohazard container.
- 11) Replace the adjustable depth cap after finishing the test.



Alternative site testing: palm or forearm blood sampling

1. Choose the clear cap and follow step 1 and step 2 "Performing a Test".
 2. Massage the puncture area of your palm or forearm for a few seconds.
 3. Immediately after massaging the puncture area, press and hold the lancing device with the clear cap against your palm or forearm.
 4. Press the release button.
 5. Continue holding the lancing device against your palm or forearm. Gradually increase pressure for a few seconds until the blood sample size is sufficient.
 6. Follow step 9 to discard the used disposable lancet.
- NOTE: DO NOT test on the palm or forearm if you are testing for hypoglycemia (low blood glucose).



NOTE

- **Rightest**® Lancing Device is intended for single person use only.
- For more information, please see the User Manual.

Rev. Date: August / 2016

BIONIME
 BIONIME CORPORATION
 No. 100, Sec. 2, Daqing St., South Dist.,
 Taichung City 40242, Taiwan
 Tel: +886 4 2369 2388 Fax: +886 4 2261 7586
 Email: info@bionime.com Website: www.bionime.com

EC REP
 Bionime GmbH
 Tramstrasse 16,
 9442 Berneck
 Switzerland
 E-mail: info@bionime.ch



0197

101-3GM782-020
 EN