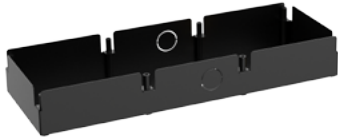


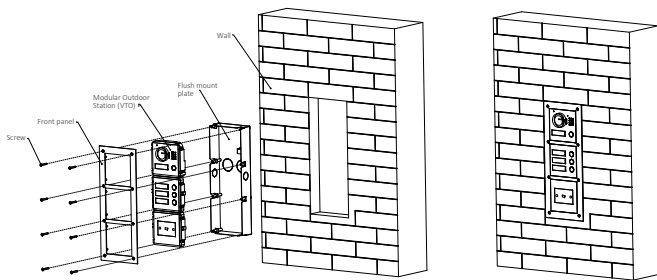
VTOB112-V2

3 Module Accessories Flush mounted box



- Material: SPCC t=0.8, powdered metal surface (Black DH920C2)
- Dimensions: 337mm×115mm×49.2mm (13.27"×4.53"×1.94")
- Wall Opening Dimensions: 349mm×125mm×50mm (13.74"×4.92"×1.97")

Installation



Step 1 Drill a hole in the wall, the rectangular hole dimension is 349mm×125mm×50mm (13.74"×4.92"×1.97")

Step 2 Put the mounting box into the wall with ST4×25 screws; ensure that box edge clings to the wall.

Step 3 Fix the rear panel on the mounting box with M2×8 screws.

Step 4 Connect cables.

Step 5 Fix every module on the rear panel with M3×8 screws.

Step 6 Apply glue to gaps among the rear panel, mounting box and wall.

Step 7 Write room number or the username on the visiting card, and insert it into user directory.

Dimensions (mm[inch])

