

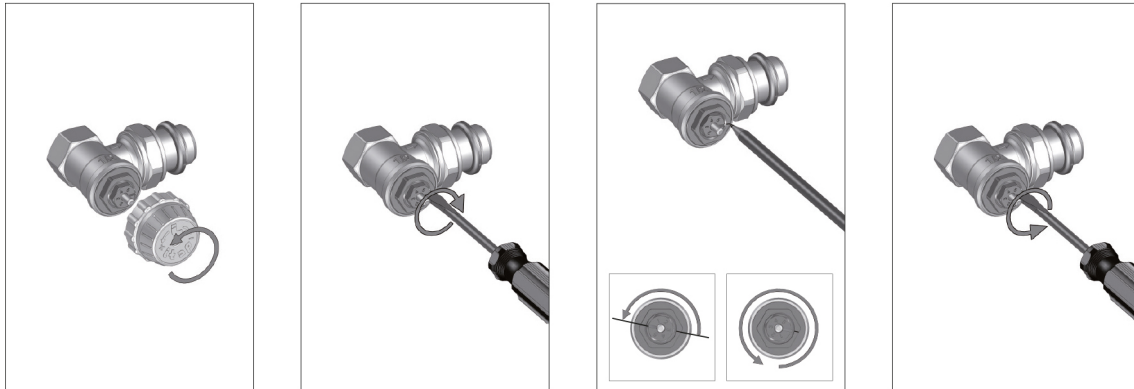


## 994CPS Терморегулирующий угловой клапан с предварительной настройкой, гнездовой разъем

### PRE-SETTING REGULATION

3/8" - 1/2":

Turn the pre-setting screw until stop and mark the position of the screw-driver slot as reference point. Then turn anti-clockwise according to the above pressure drop and flow rate charts.



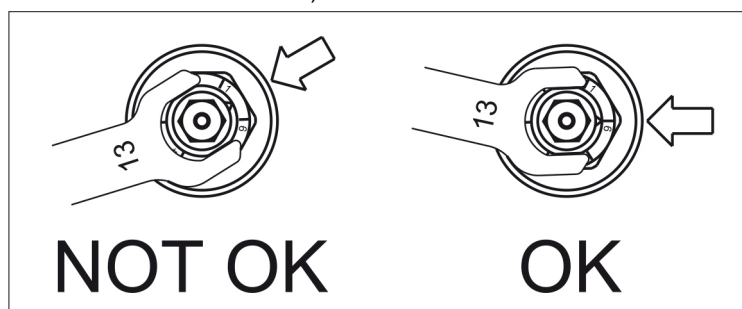
Pre-setting above 3 are unsuitable for operation with thermostatic heads and should only be used with actuators (open/close operation).

Normal flow rate according to different pre-setting positions (using the thermostatic head) Qms (l/h) with  $\Delta p$  10 kPa

SIZE	3/8" - 1/2"							
Pre-setting position	1	2	3	4	5	6	Max.	Qmn
894CPS - 895CPS	108	180	210	210	210	210	210	210
994CPS - 995CPS	90	180	210	210	210	210	210	210
±%	60	30	20	10	10	10	10	10

3/4":

Use a wrench (13 mm) to set the index on one of the numbers.  
(The selector cannot be positioned between two numbers)



Normal flow rate according to different pre-setting positions (using the thermostatic head) Qms (l/h) with  $\Delta p$  10 kPa

SIZE	3/4"					
Pre-setting position	1	2	3	4	5	6
894CPS	30	60	95	130	210	270
994CPS	30	60	95	130	210	305
±%	60	30	20	10	10	10