



MAGMA SYN RNL SAE 5W-30



“ Fully synthetic, lowSAPS engine oil; exceeds ACEA C4 & Renault RN0720 specs

Ideal for Renault, Dacia, Nissan engines with DPF; suitable for certain Mercedes-Benz vehicles fitted with Renault diesel engines

MAGMA SYN RNL SAE 5W-30 is a very high performance, fully synthetic, passenger light duty commercial vehicles engine oil, specifically developed to provide for extremely high levels of protection and cleanliness of the engine. Based on premium quality synthetic base oils and a advanced low ash, phosphorus and sulfur additive technology, it ensures, overall, high levels of oxidation, soot, sludge and wear control, longer engine and diesel filter life (especially at engine warm up stage) and, also, lowered oil consumption.

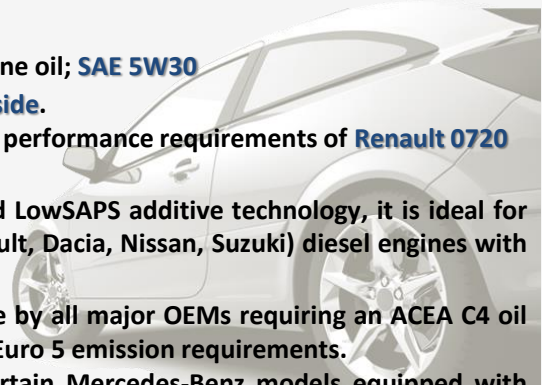
MAGMA SYN RNL SAE 5W-30 ensures exceptional engine performance and protection from wear, after-treatment system compatibility and fuel economy benefits.

	Fuel economy	<input checked="" type="checkbox"/>	<input checked="" type="checkbox"/>
	Wear protection	<input checked="" type="checkbox"/>	<input checked="" type="checkbox"/>
	Turbocharger protection	<input checked="" type="checkbox"/>	<input checked="" type="checkbox"/>



Try to remember

- ✓ Fully synthetic PC engine oil; **SAE 5W30**
- ✓ **TriboACT® Formula inside.**
- ✓ Exceeds the very strict performance requirements of **Renault 0720 specification.**
- ✓ Based on an advanced LowSAPS additive technology, it is ideal for Renault Group (i.e. Renault, Dacia, Nissan, Suzuki) diesel engines with DPF.
- ✓ Recommended for use by all major OEMs requiring an ACEA C4 oil and meeting Euro 4 and Euro 5 emission requirements.
- ✓ Recommended for certain Mercedes-Benz models equipped with Renault diesel engines (with DPF), in accordance with MB 226.51.



ACEA	C4
Renault	RN0720
Daimler	MB 226.51
Meets: Nissan, Dacia, Suzuki	

Increased Piston Deposits Performance: LLR Renault-in-House Test



Comparative oil

vs



MAGMA SYN RNL 5W-30

LPC's "tribological-action" empowering formula was developed to address the latest industry challenges and exceed the continuously evolving lubrication requirements of engine manufacturers.

What is it?

TriboACT® is an additive system that is based on the extra strong chemical interaction of various polarity ingredients included within.

What does it do?

The robust and synergistic ACTION of **TriboACT®** boosts the lubricant's critical tribological characteristics:

- **Oil film consistency in the valve train.**
- **Wear control in the piston and rings area, clean-ability in the turbocharger region.**
- **Fuel economy.**

The driving force behind **TriboACT®** is LPC's 35 years of accumulated know-how and substantial investments in formulating, testing and blending innovative and technologically superior lubricant products.

APPLICATION GUIDE

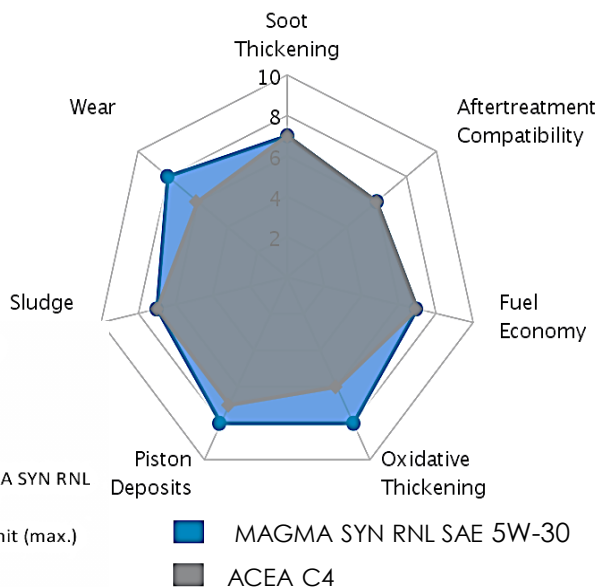
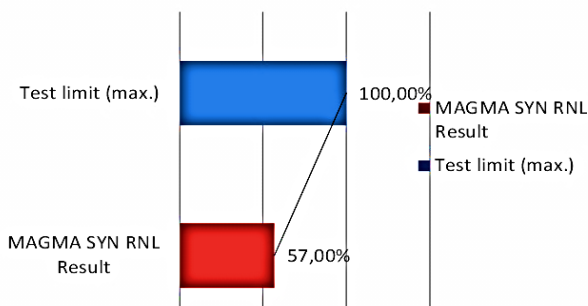


CYCLON MAGMA SYN RNL SAE 5W-30 has been developed the the latest technology Renault Group diesel engines with DPF requiring a RN0720 specification lubricant.

It is specifically formulated with high quality synthetic base oils and a specifically selected lowSAPS technology for Euro 4 or Euro 5 units equipped with after-treatment devices. It is the first recommendation for new generation Renault and Dacia diesel engines and for prolonged drain intervals even at harsh operational conditions. It is, also, suitable for use for a number of Nissan and Suzuki vehicles requiring an oil of ACEA C4 or Renault RN 0720 quality level.

MAGMA SYN RNL SAE 5W-30 has been tested and exceeds the very strict requirements of **Renault's in-house LLR test (oxidation performance)** demonstrating a substantial lowered viscosity increase in contrast with the upper test limit.

Viscosity increase @40 oC, % (max.)

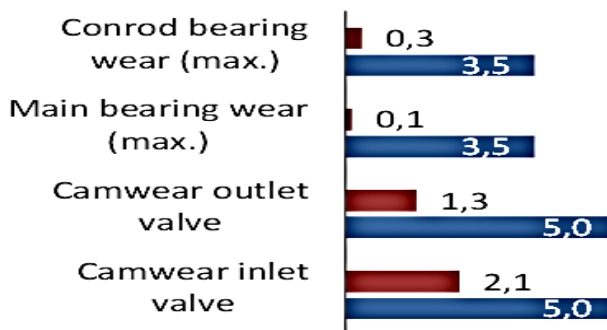


SUPERIOR WEAR PERFORMANCE

MAGMA SYN RNL SAE 5W-30 has been tested against rigorous industry standards. It exceeds the stringent requirements of various industry tests. It demonstrates approximately an average 80% improvement in wear performance in M271 wear test, when contrasted against Daimler's MB 229.51 specification.

Wear performance (µm)

- MAGMA SYN RNL Result
- MB sheet no. 229.51



Contact Info:

LPC S.A.
124 Megaridos Av. GR-19300
switchboard
t: +30 210 8093900
orders
t: +30 210 8093949
customerservice@cyclon.gr
exports
t: +30 210 8093903
exports@lpc.gr
technical issues/services
t: +30 210 8093929
technical@cyclon.gr

www.cyclon-lpc.com

"TriboACT" & "TriboACT Formula" are registered © trademarks of LPC S.A.