



# 红蝙蝠无线手柄

产品说明书(PG-9083S)中文版

### 产品适用说明:

- 1.产品支持直连直玩, 无需多余的游戏平台和复杂的设置与激活操作! (支持安卓6.0以上, iOS11.0以上系统)
- 2.产品适用于Android/iOS手机平板/智能电视系统上无线连接时,进行游戏操作时使用;
- 3.产品带有超长伸缩功能,可调节,伸缩尺寸最大支持280mm的长度;
- 4.结构符合人体工程学,手感舒适;

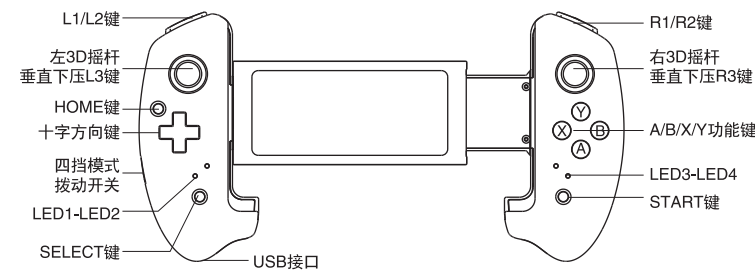
- \* 因手机系统问题,个别手机可能不支持此设备(如:联发科平台的手机无法支持)
- \* 因官方游戏平台软件升级或源代码变更等不可抗拒的因素造成部分游戏无法与本产品连接操作, 我公司不承担任何责任, 对此我公司保留最终解释权。

售后客服QQ群: 837350687  
客服电话: 400-806-3006  
在线时间: 周一至周五9:30-17:30



艾源科官方微信公众号 (关注微信号 下载游戏APP)

### 功能按键图示:



### 产品特性参数:

- 1.产品尺寸: L215.5\*W127.9\*H54.5 mm;
- 2.产品重量: 232±5g;
- 3.工作电压: DC3.7V;
- 4.工作电流: <15mA;
- 5.静态电流: <15uA;
- 6.持续使用时间: >15H;
- 7.输入电压/电流: DC5V/500mA;
- 8.充电时间: 约3小时;
- 9.蓝牙4.0, 传输距离: ≤8M;
- 10.电池容量: 380mAh;
- 11.待机时间: 满电放置30天;



### 产品使用说明:

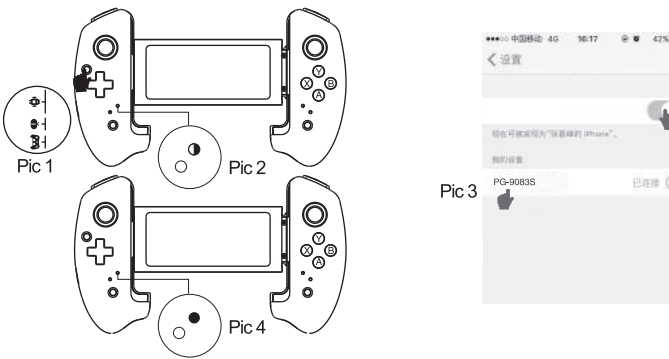
#### 安卓V3 直玩模式:

将模式开关置于“” (前两档)位置; 长按住HOME键3秒开机, 此时LED1指示灯快闪; 将Android设备端的蓝牙功能打开, 点击“扫描”; 当搜索到蓝牙名为“PG-9083S”的设备名时, 选择配对连接; 连接成功, LED1常亮。已成功连接过, 可以直接按HOME键, LED1灯慢闪, 自动回连!



### IOS V3 直玩模式:

将模式开关置于“”位置; 长按住HOME键3秒开机, 此时LED2指示灯快闪; 将IOS设备端的蓝牙功能打开, 点击“扫描”; 当搜索到蓝牙名为“PG-9083S”的设备名时, 选择配对连接; 连接成功, LED2常亮。已成功连接过, 可以直接按HOME键, LED2灯慢闪, 自动回连!



### 安卓/iOS直玩按键映射功能:

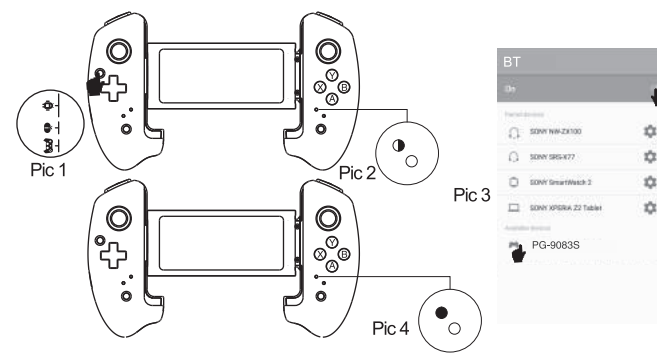
关注公众号 (“ShootingPlus”), 查看公众号内的默认操作说明, 如需设置映射键位, 请下载安装“ShootingPlus V3”APP, 在APP内进行按键映射以及调整按键位!  
本产品默认映射为“绝地求生: 刺激战场”!



ShootingPlus微信公众号 (关注微信号 下载 ShootingPlus app)

### 安卓标准游戏模式:

将模式开关置于“”位置; 长按住HOME键3秒开机, 此时LED3指示灯快闪; 将Android设备端的蓝牙功能打开, 点击“扫描”; 当搜索到蓝牙名为“PG-9083S”的设备名时, 选择配对连接; 连接成功, LED3常亮按HOME键, LED3灯慢闪, 自动回连!



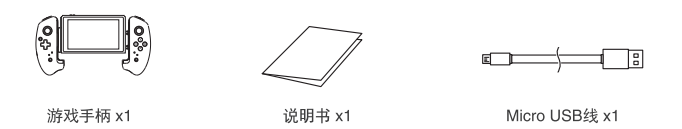
### 手柄充电/休眠/唤醒/关机功能:

- 1.手柄充电功能:
  - a.低电时, LED4指示灯快闪提示;
  - b.充电时, LED4指示灯慢闪提示;
  - c.充满时, LED4指示灯长亮提示;
- 2.手柄休眠/唤醒/关机功能:
  - a.游戏手柄在5分钟内无任何按键操作时自动关机休眠;
  - b.当需要重新使用时需按HOME键唤醒即可回连;
  - c.在开机状态下, 长按HOME键3秒, 产品关机, 所有LED指示灯熄灭;

### 注意事项:

- 1.请不要把本产品放在潮湿或高温地方存储;
- 2.不要敲击、摔打、棒打、刺穿, 或试图去分解本产品, 以免对产品造成不必要的损害;
- 3.产品内置电池, 请勿和垃圾一起丢弃;
- 4.不要在靠近火或其它热源的地方对手柄进行充电。
- 5.非专业人员请勿拆卸本产品, 否则不在售后维修服务内;

### 产品清单:



iPega 属于 PEGA LIMITED 所有。



# Red Bat Wireless Game Controller

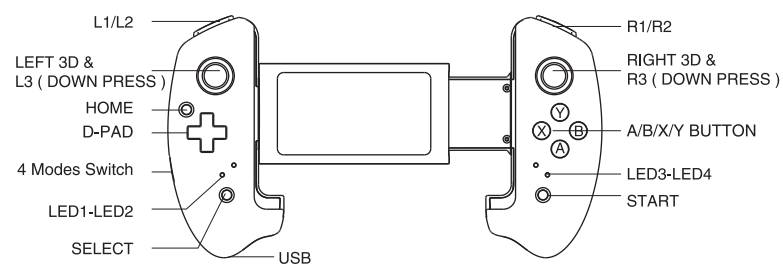
User Manual (PG-9083S)

### Application Instruction:

1. This product support Direct-Play Mode, Connect & Play, NO APP needed, NO activation, Easy to operate.(System requirements: Android 6.0 or above, iOS 11.0 or above)
2. Support playing games on BT enabled Android/ iOS Smartphones/ Tablets/ Smart TV;
3. With extending holder, super telescopic, adjustable! Maximum extending size up to 280mm.
4. Ergonomic structure, comfortable hand feeling

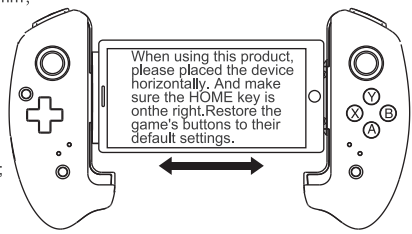
- \* Due to the mobile phone system problems, individual mobile phones may not support this device (e.g. the mobile phones of the Media Tek platform can not support it).
- \* Due to the official game platform software upgrade or source code changes and other not resist factors caused of some games can not be played or connected with our gamepad. Our company has no responsibility, we reserves the right of final interpretation for this.

### Instruction for key function:



### Electrical parameters:

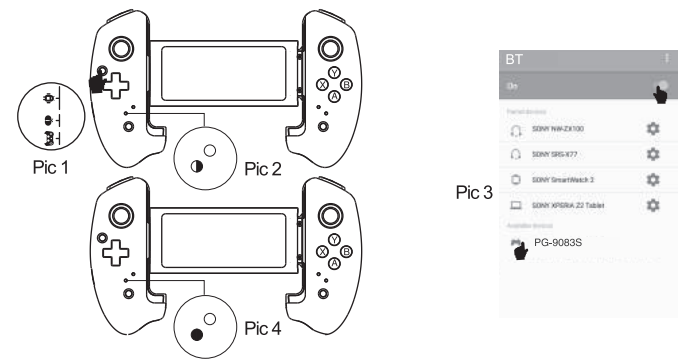
- 1.Product Size: L215.5\*W127.9\*H54.5 mm;
- 2.Product Weight: 232±5g;
- 3.Working voltage: DC 3.7V;
- 4.Working current: <15mA;
- 5.Static current: < 15uA;
- 6.Continuous gameplay time: >15H;
- 7.Input voltage/current: DC 5V/ 500 mA;
- 8.Charging Time: about 3 hours;
- 9.BT 4.0 transmission distance: ≤8M;
- 10.Battery capacity: 380 mA;
- 11.Standby time: up to 30days once fully charged;



### Product Application:

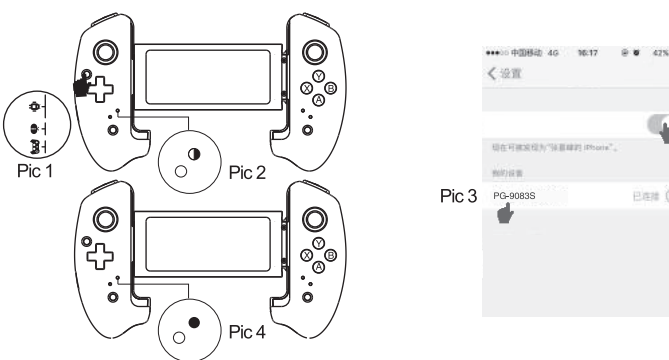
#### Direct Play Mode (Android V3):

Set the mode switch to the “” (First or second) position; Press and hold the “HOME” button for 3 seconds to turn on the gamepad. At this time, the LED1 indicator flashes quickly, then search “PG-9083S” on mobile bluetooth and pair it, LED1 indicator will be always on after connected successfully! If you connected before, press the HOME button directly, LED1 indicator will flash slowly, automatically reconnect!



### Direct Play Mode (IOS V3):

Set the mode switch to the “” position; Press and hold the “HOME” button for 3 seconds to turn on the gamepad. At this time, the LED2 indicator flashes quickly, then search “PG-9083S” on mobile bluetooth and pair it, LED2 indicator will be always on after connected successfully! If you connected before, press the HOME button directly, LED2 indicator will flash slowly, automatically reconnect!



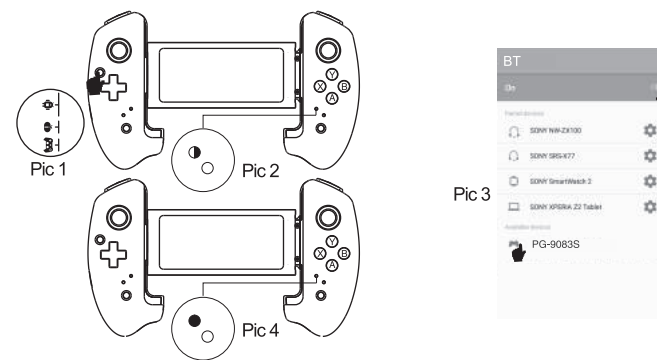
### Mapping game buttons for direct play mode ( Android/iOS ):

Check the default operation instructions at [www.ipega.hk](http://www.ipega.hk). If you need to reset the game buttons, please download and install “ShootingPlus V3” APP from APP Store/ Google Play Store, remap the game buttons in the APP and adjust the button position! This product default game button is “PUBG Mobile”!



### Android Standard Mode:

Set the mode switch to the “” position; Press and hold the “HOME” button for 3 seconds to turn on the gamepad. At this time, the LED3 indicator flashes quickly, then search “PG-9083S” on mobile bluetooth and pair it, LED3 indicator will be always on after connected successfully! If you connected before, press the HOME button directly, LED3 indicator will flash slowly, automatically reconnect!



### Charging/sleep/wake up/off function of Gamepad:

1. Charging function:
  - a. When the power is low, the LED4 indicator flashes quickly;
  - b. When charging, the LED4 indicator flashes slowly;
  - c. When fully charged, the LED4 indicator light is always on;
2. Sleep / wake up / off function:
  - a. The gamepad will automatically turn off if no operation within 5 minutes.
  - b. When you need to restart, you need to press the HOME button to wake up then you can reconnect;
  - c. When the gamepad is turned on, press and hold the HOME button for 5 seconds, the product will be turned off, and all the LED indicators will turn off;

### Notes:

1. Please do not store this product in wet or high-temperature areas.
2. Don't knap, beat, drub, pierce, or try to decompose this product, to avoid unnecessary damage to the product.
3. The product has built-in batteries, and please don't discard them together with the garbages.
4. Don't charge the controller in a place near the fire or other heat source.
5. Non professional personnel should not disassemble the product, otherwise it will not be covered in the after-sales warranty service.
6. Due to the official game platform software upgrades or source code changes and other not resist factors caused some of the game can not be played or connected with our Gamepad, iPega company has no responsibility. iPega reserve the right of final interpretation for this.

### Accessories List:



iPega and ePega trademarks all belong to PEGA LIMITED.