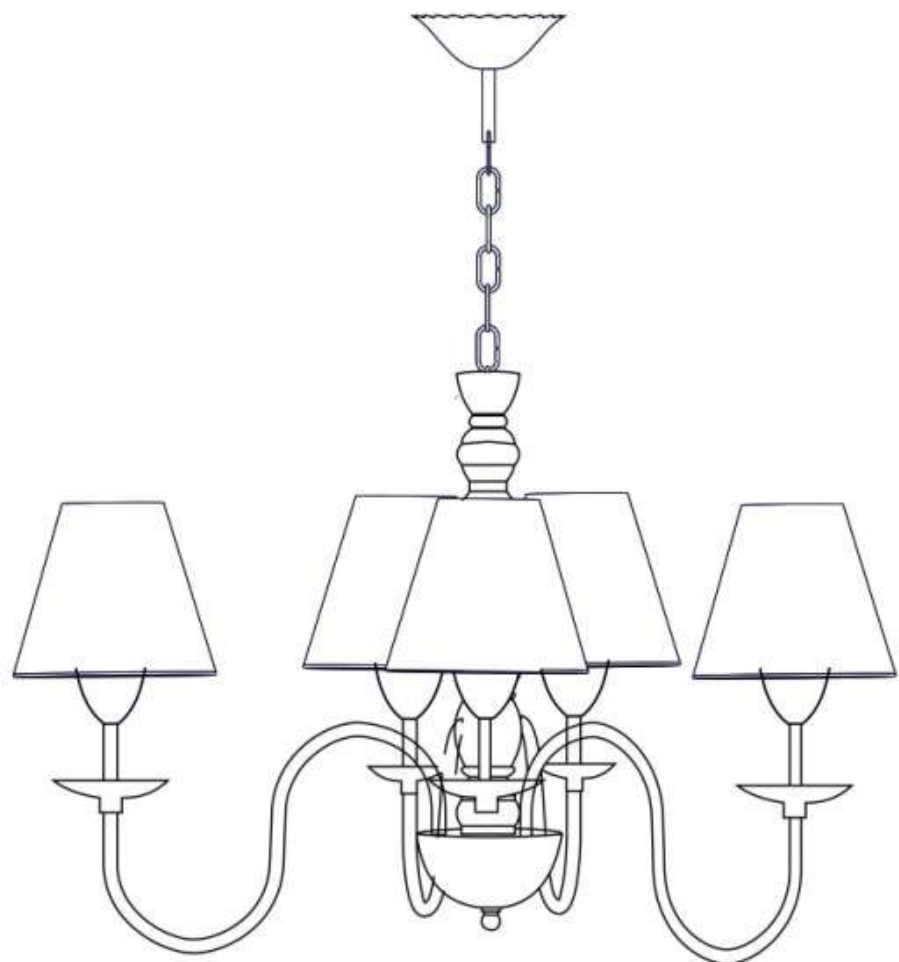
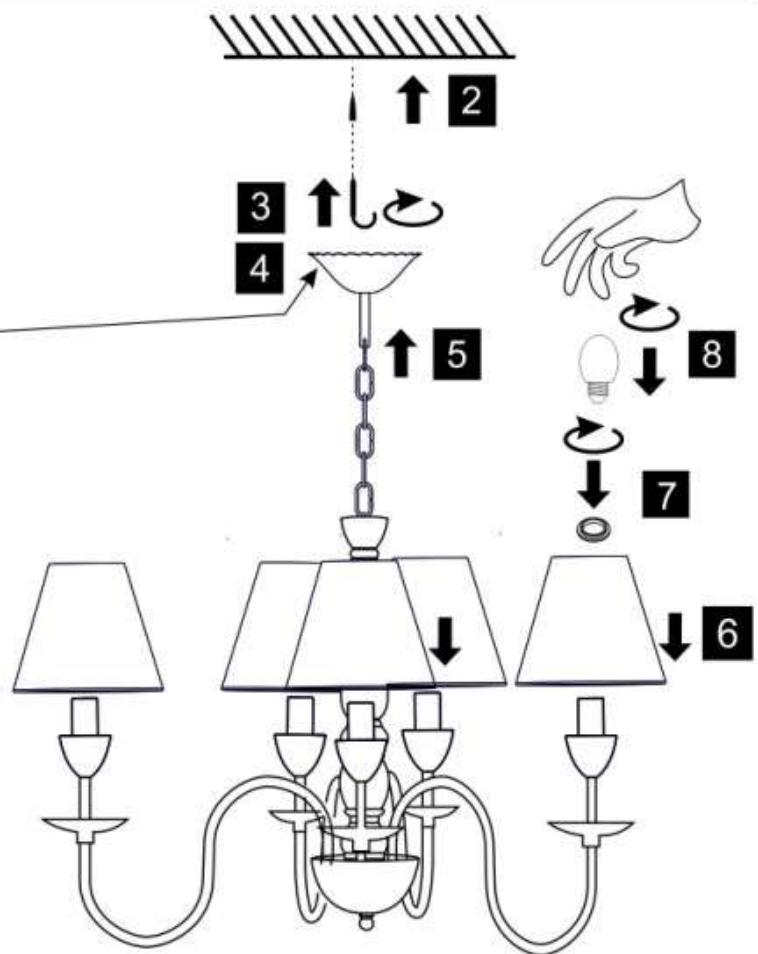
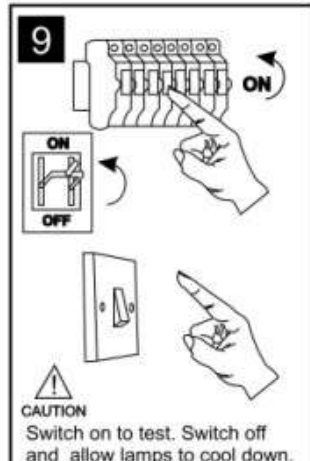
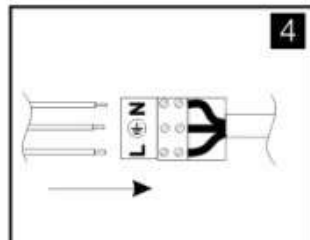
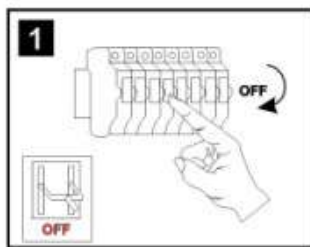


INSTALLATION INSTRUCTIONS



Installation Pack

Installation instruction	1 Page
Installation Guidelines	2Pgs

Contents
Checked By



(1) Prior to installation carefully unpack and check all the components and accessories are as per details enclosed.

(2) These instructions should be used in conjunction with the installation guidelines included.

Voltage: 230V - 50/60Hz
Lampholder: E14
Lamps: 5 x 40W Max



Model № 8405