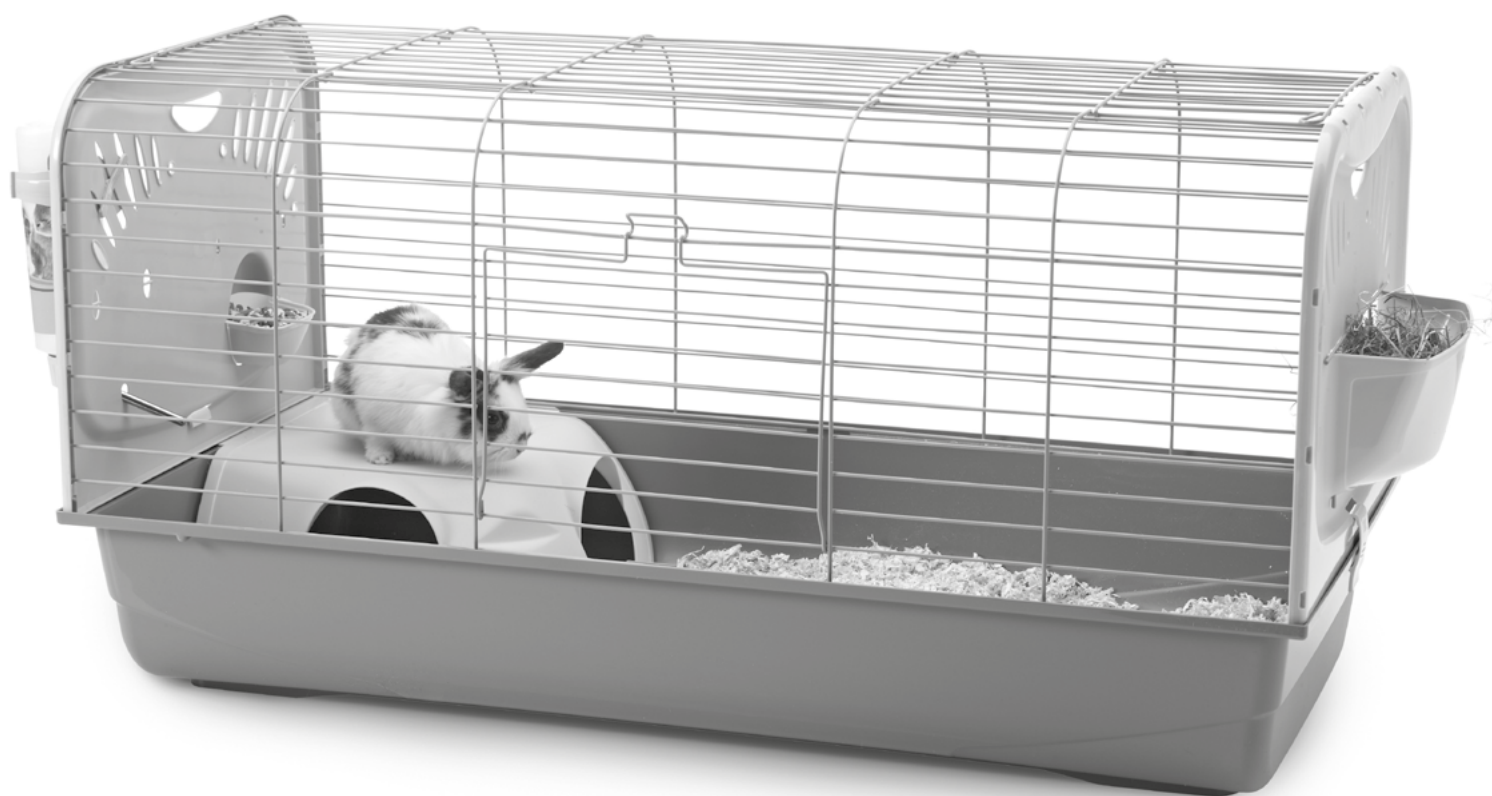


Caesar knock down

assembly instructions

SAVIC®

pets' favourite



www.savic.be

Ringlaan 10 • B-8501 Heule • Belgium

Tel. +32 56 35 33 45 • Fax +32 56 35 77 30

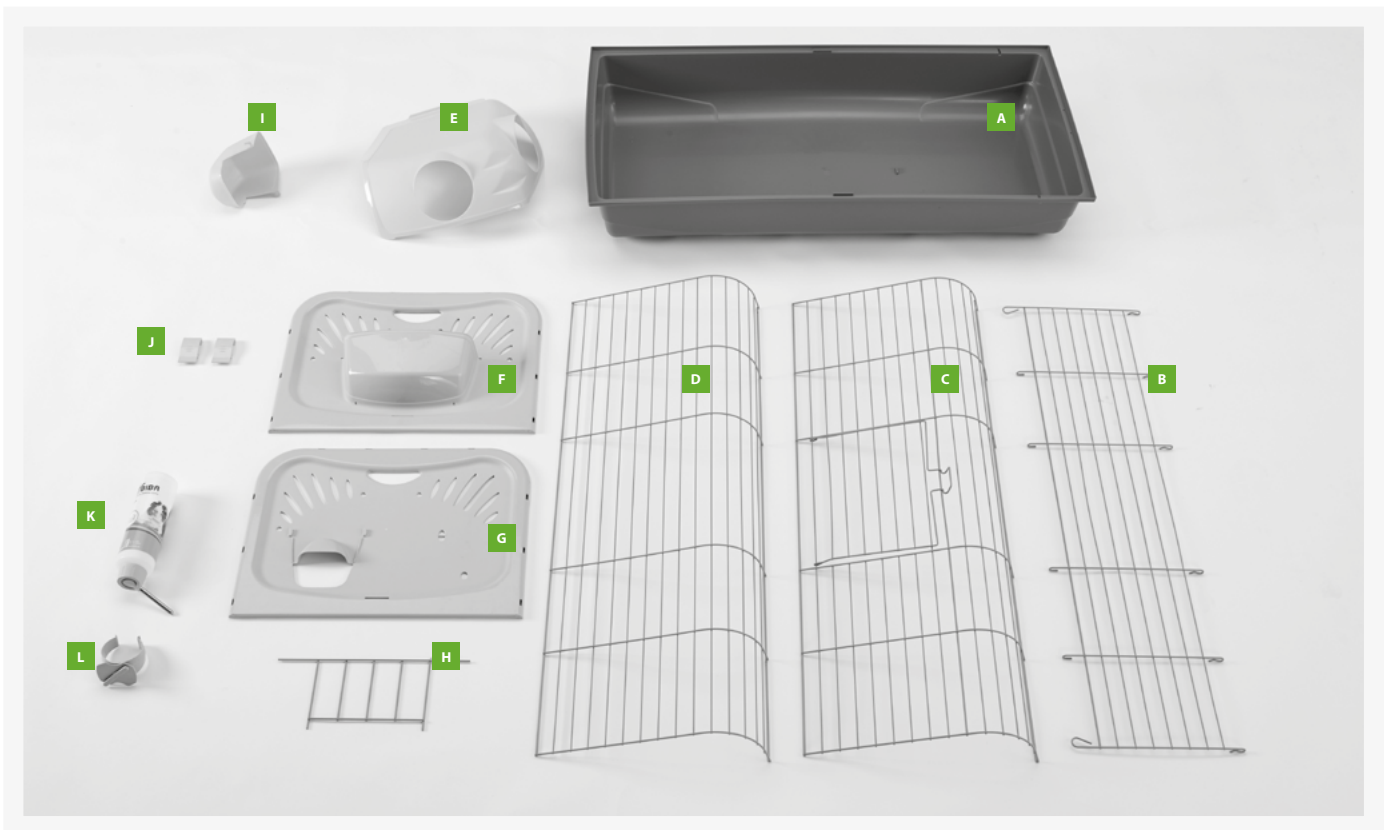
info@savic.be

Doc.nr.: 931224

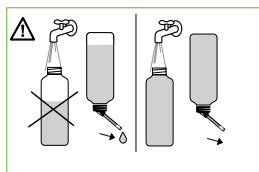
Check list

Before you start assembling your cage, please check if you have all the components. If any part is missing or damaged, do not use your cage.

- A** 1 plastic bottom tray
- B** 1 roof panel
- C** 1 front panel
- D** 1 back panel
- E** 1 platform
- F** 1 side panel for hay rack
- G** 1 side panel for feeding and drinking
- H** 1 metal hay rack
- I** 1 feeding bowl
- J** 2 closing clips
- K** 1 drinking bottle
- L** 1 holder for drinking bottle

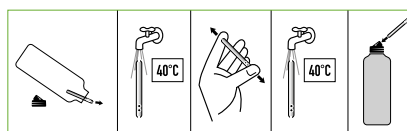


assembly video

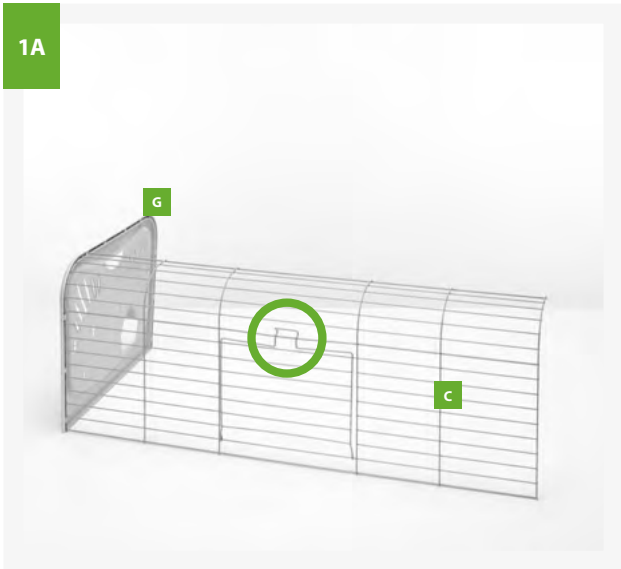


ATTENTION

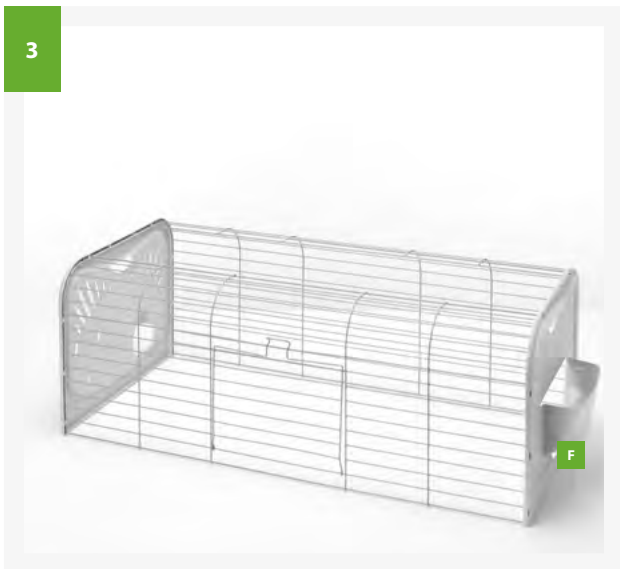
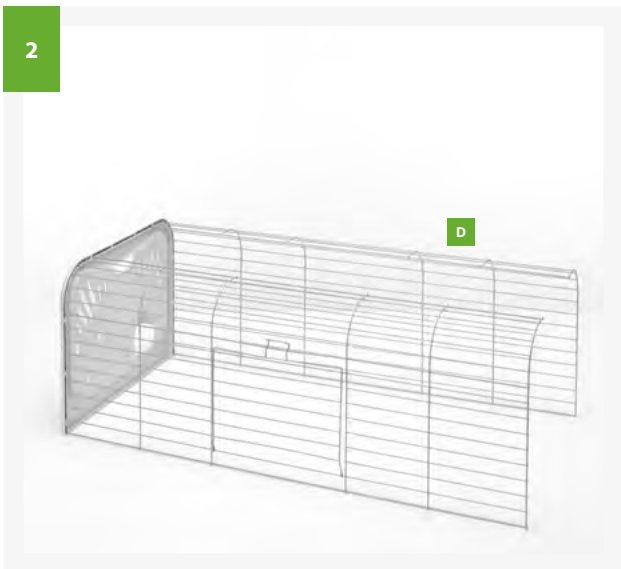
To avoid leakage, always fill bottle 100%.
 Om lekken te vermijden, vul de fles altijd 100%.
 Afin d'éviter des fuites, toujours remplir la bouteille 100%.
 Um Tropfen zu vermeiden, Tränke immer 100% füllen.
 Para evitar gotas, siempre llenar la botella 100%.



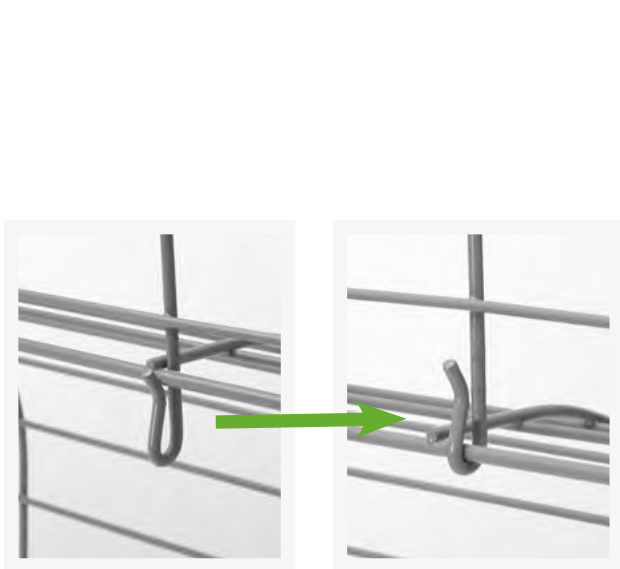
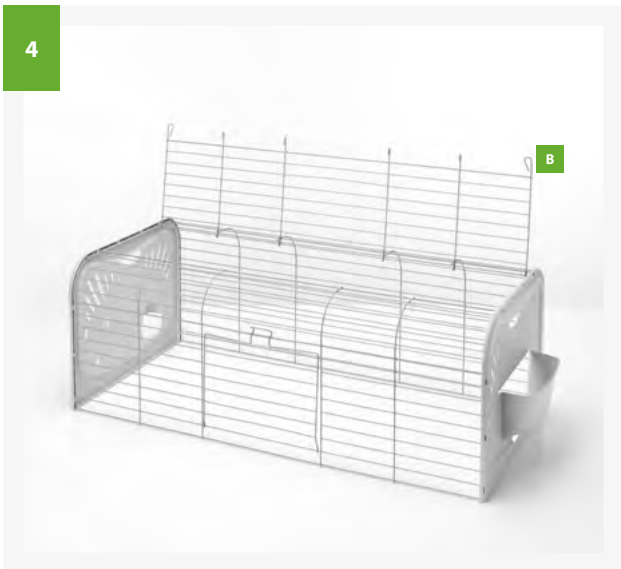
Rinse spout with hot water before first use.
 Voor eerste gebruik, buisje reinigen met warm water.
 Avant premier usage, rincer la pipette à l'eau chaude.
 Vor erster Verwendung, Röhrchen spülen mit heissem Wasser.
 Antes de usarlo, limpiar el tubito con agua caliente.



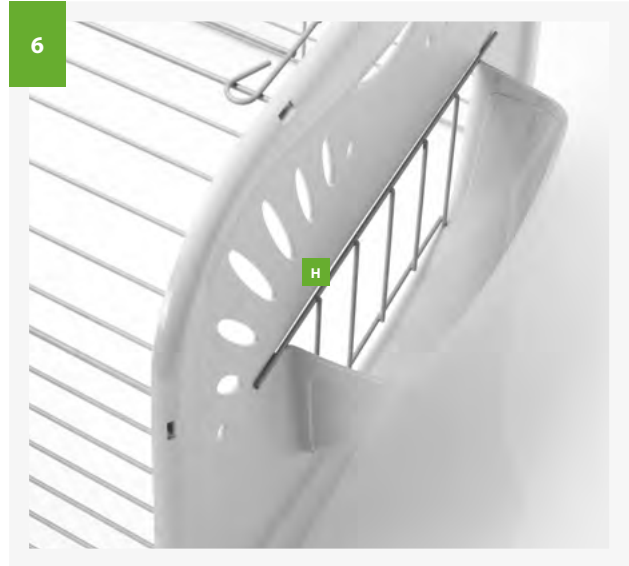
1) Take the front panel (c) and let it click into the side feeding & drinking panel (g). Make sure the door is facing outwards.



2) Repeat this procedure for the back panel (d).
3) Now fix the other side panel for hay rack (f).



4) Attach the roof panel (b) on the back panel and pull.



5) Close the roof panel.

6) Install the hay rack (h) in the side panel. Your upper cage part is now fully assembled.



7) Install the platform (e) in the corner of the plastic tray (a).

8) Put the upper cage part on the tray. Install the feeding bowl (i), the drinking bottle (k) with holder (l) on the side panel (g) and the 2 closing clips on both sides (f + g) and your cage is now ready for use.