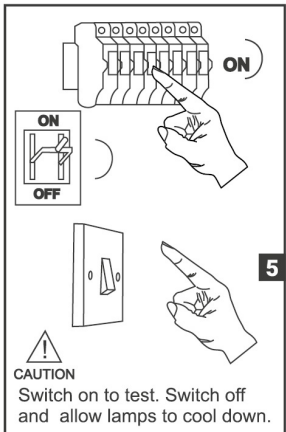
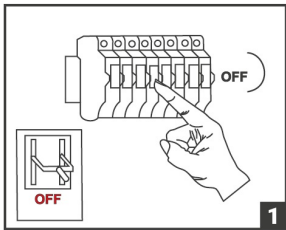


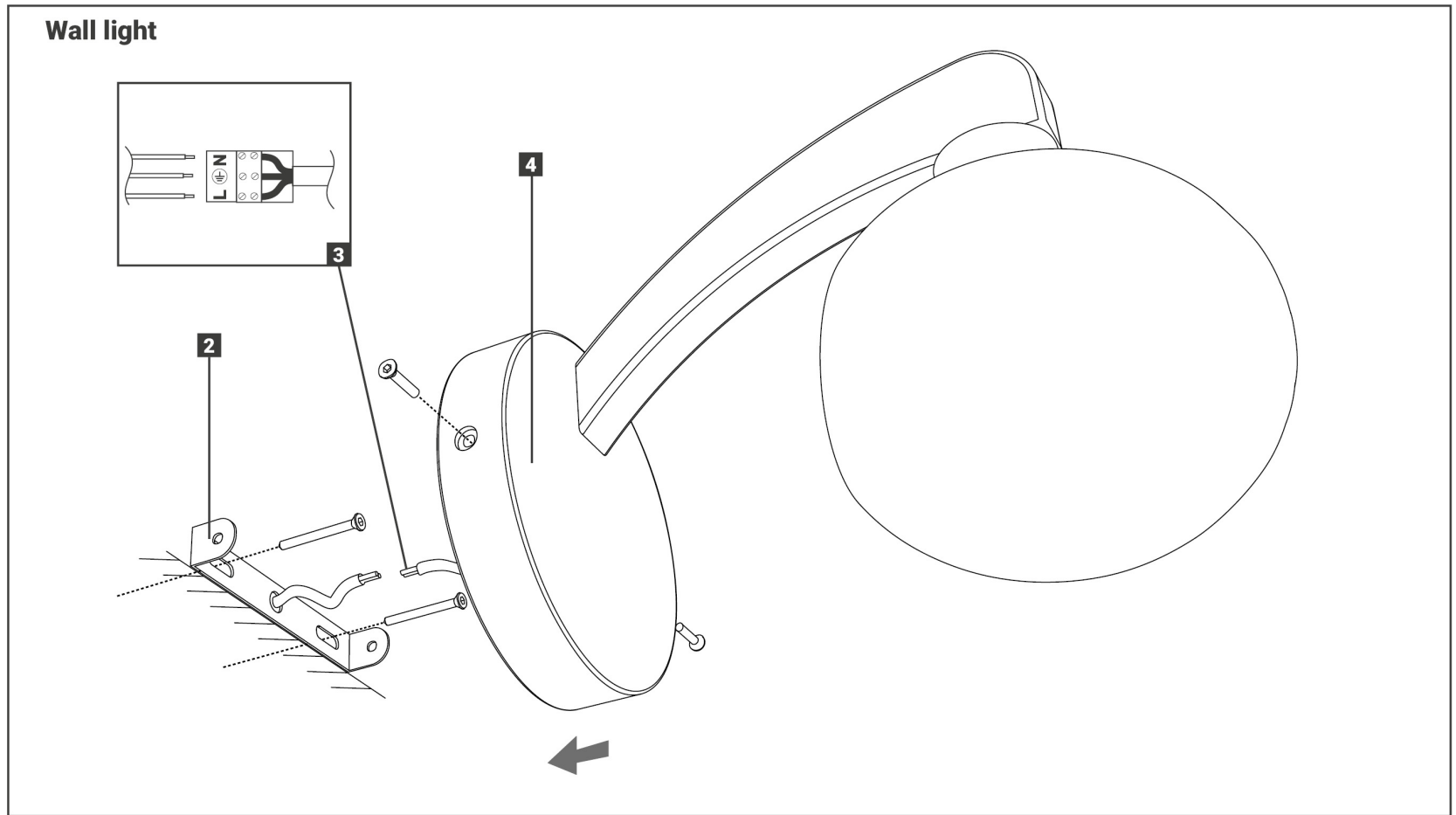


INSTALLATION INSTRUCTIONS




VOLTAGE: 230V - 50/60Hz
LAMPHOLDER: E14
LAMPS: 1 x 40W

CE  



MODEL 30911



(1) Prior to installation carefully unpack and check all the components and accessories are as per details enclosed.

(2) These instructions should be used in conjunction with the installation guidelines included.

Installation Pack		
Installation instruction	2 Page	
Installation guidelines	2 Pgs	
Fixing Screw and Plug	2 Sets	

Contents Checked By	
---------------------	--