

*Getting Started*

*Einführung*

*Prise en Main*

*Cómo Empezar*

*Guida Introduttiva*

*セットアップガイド*

**USB AUDIO INTERFACE**

# UR 824



EN  
DE  
FR  
ES  
IT  
JA



# FCC INFORMATION (U.S.A.)

## 1. IMPORTANT NOTICE: DO NOT MODIFY THIS UNIT!

This product, when installed as indicated in the instructions contained in this manual, meets FCC requirements. Modifications not expressly approved by Yamaha may void your authority, granted by the FCC, to use the product.

## 2. IMPORTANT:

When connecting this product to accessories and/or another product use only high quality shielded cables. Cable/s supplied with this product MUST be used. Follow all installation instructions. Failure to follow instructions could void your FCC authorization to use this product in the USA.

## 3. NOTE:

This product has been tested and found to comply with the requirements listed in FCC Regulations, Part 15 for Class "B" digital devices. Compliance with these requirements provides a reasonable level of assurance that your use of this product in a residential environment will not result in harmful interference with other electronic devices. This equipment generates/uses radio frequencies and, if not installed and used according to the instructions found in the users manual, may cause interference harmful to the operation of other electronic devices. Compliance with FCC

regulations does not guarantee that interference will not occur in all installations. If this product is found to be the source of interference, which can be determined by turning the unit "OFF" and "ON", please try to eliminate the problem by using one of the following measures:

Relocate either this product or the device that is being affected by the interference.

Utilize power outlets that are on different branch (circuit breaker or fuse) circuits or install AC line filter/s.

In the case of radio or TV interference, relocate/ reorient the antenna. If the antenna lead-in is 300 ohm ribbon lead, change the lead-in to co-axial type cable.

If these corrective measures do not produce satisfactory results, please contact the local retailer authorized to distribute this type of product. If you can not locate the appropriate retailer, please contact Yamaha Corporation of America, Electronic Service Division, 6600 Orangethorpe Ave, Buena Park, CA90620

The above statements apply ONLY to those products distributed by Yamaha Corporation of America or its subsidiaries.

\* This applies only to products distributed by YAMAHA CORPORATION OF AMERICA.

(class B)

## COMPLIANCE INFORMATION STATEMENT (DECLARATION OF CONFORMITY PROCEDURE)

Responsible Party : Yamaha Corporation of America  
Address : 6600 Orangethorpe Ave., Buena Park, Calif. 90620  
Telephone : 714-522-9011  
Type of Equipment : USB AUDIO INTERFACE  
Model Name : UR824

This device complies with Part 15 of the FCC Rules.  
Operation is subject to the following two conditions:

- 1) this device may not cause harmful interference, and
- 2) this device must accept any interference received including interference that may cause undesired operation.

See user manual instructions if interference to radio reception is suspected.

\* This applies only to products distributed by YAMAHA CORPORATION OF AMERICA.

(FCC DoC)

이 기기는 가정용(B급) 전자파적합기기로서 주로 가정에서 사용하는 것을 목적으로 하며, 모든 지역에서 사용할 수 있습니다.

(class b korea)

# Contents

<b>PRECAUTIONS</b> .....	<b>4</b>
<b>Introduction</b> .....	<b>7</b>
A Message From the Development Team.....	7
Included Accessories .....	7
How to Read the Manual.....	9
<b>Panel Controls and Terminals</b> .....	<b>10</b>
Rear Panel .....	10
Front Panel.....	11
<b>Setup</b> .....	<b>12</b>
1. Setting up the Power Supply .....	12
2. Installing Cubase AI .....	13
3. Installing TOOLS for UR824.....	14
4. Downloading the Licenses (Activation) .....	16
<b>Basic Operations</b> .....	<b>17</b>
Introduction.....	17
Connection Example .....	17
Configuring Audio Driver Settings on the DAW Software .....	17
<b>Troubleshooting</b> .....	<b>19</b>
<b>Appendix</b> .....	<b>21</b>
Contents of the Operation Manual .....	21
Uninstalling TOOLS for UR824 .....	21
Specifications .....	23

# PRECAUTIONS

## ***PLEASE READ CAREFULLY BEFORE PROCEEDING***

- \* Please keep this manual in a safe place for future reference.



### **WARNING**

Always follow the basic precautions listed below to avoid the possibility of serious injury or even death from electrical shock, short-circuiting, damages, fire or other hazards. These precautions include, but are not limited to, the following:

#### **Power supply/AC power adaptor**

- Do not place the power cord near heat sources such as heaters or radiators, and do not excessively bend or otherwise damage the cord, place heavy objects on it, or place it in a position where anyone could walk on, trip over, or roll anything over it.
- Only use the voltage specified as correct for the device. The required voltage is printed on the name plate of the device.
- Use the specified adaptor (PA-300C or an equivalent recommended by Yamaha) only. Using the wrong adaptor can result in damage to the device or overheating.
- Use only the supplied power cord/plug.
- Check the electric plug periodically and remove any dirt or dust which may have accumulated on it.

#### **Do not open**

- This device contains no user-serviceable parts. Do not open the device or attempt to disassemble the internal parts or modify them in any way. If it should appear to be malfunctioning, discontinue use immediately and have it inspected by qualified Yamaha service personnel.

#### **Water warning**

- Do not expose the device to rain, use it near water or in damp or wet conditions, or place on it any containers (such as vases, bottles or glasses) containing liquids which might spill into any openings. If any liquid such as water seeps into the device, turn off the power immediately and unplug the power cord from the AC outlet. Then have the device inspected by qualified Yamaha service personnel.
- Never insert or remove an electric plug with wet hands.

#### **Fire warning**

- Do not put burning items, such as candles, on the unit. A burning item may fall over and cause a fire.

#### **If you notice any abnormality**

- When one of the following problems occur, immediately turn off the power and disconnect the electric plug from the outlet. Then have the device inspected by Yamaha service personnel.
  - The power cord or plug becomes frayed or damaged.
  - It emits unusual smells or smoke.
  - Some object has been dropped into the device.
  - There is a sudden loss of sound during use of the device.
- If this device or the AC power adaptor should be dropped or damaged, immediately turn off the power, disconnect the electric plug from the outlet, and have the device inspected by qualified Yamaha service personnel.



## CAUTION

Always follow the basic precautions listed below to avoid the possibility of physical injury to you or others, or damage to the device or other property. These precautions include, but are not limited to, the following:

### Power supply/AC power adaptor

- Do not cover or wrap the AC power adaptor with a cloth or blanket.
- When removing the electric plug from the device or an outlet, always hold the plug itself and not the cord. Pulling by the cord can damage it.
- Remove the electric plug from the outlet when the device is not to be used for extended periods of time, or during electrical storms.

### Location

- Do not place the device in an unstable position where it might accidentally fall over.
- Do not block the vents. This device has ventilation holes at the top/sides to prevent the internal temperature from becoming too high. In particular, do not place the device on its side or upside down. Inadequate ventilation can result in overheating, possibly causing damage to the device(s), or even fire.
- Do not place the device in a location where it may come into contact with corrosive gases or salt air. Doing so may result in malfunction.
- Before moving the device, remove all connected cables.
- When setting up the device, make sure that the AC outlet you are using is easily accessible. If some trouble or malfunction occurs, immediately turn off the power and disconnect the plug from the outlet. Even when the power is turned off, electricity is still flowing to the product at the minimum level. When you are not using the product for a long time, make sure to unplug the power cord from the wall AC outlet.

### Connections

- Before connecting the device to other devices, turn off the power for all devices.  
Before turning the power on or off for all devices, set all volume levels to minimum.

### Maintenance

- Remove the power plug from the AC outlet when cleaning the device.

### Handling caution

- Do not insert your fingers or hands in any gaps or openings on the device (vents, etc.).
- Avoid inserting or dropping foreign objects (paper, plastic, metal, etc.) into any gaps or openings on the device (vents, etc.) If this happens, turn off the power immediately and unplug the power cord from the AC outlet. Then have the device inspected by qualified Yamaha service personnel.
- Do not rest your weight on the device or place heavy objects on it, and avoid use excessive force on the buttons, switches or connectors.
- Do not use the headphones for a long period of time at a high or uncomfortable volume level, since this can cause permanent hearing loss. If you experience any hearing loss or ringing in the ears, consult a physician.

Yamaha cannot be held responsible for damage caused by improper use or modifications to the device, or data that is lost or destroyed.

Always turn the power off when the device is not in use.

Even when the power is in standby status, electricity is still flowing to the device at the minimum level. When you are not using the device for a long time, make sure you unplug the power cord from the wall AC outlet.

## NOTICE

**To avoid the possibility of malfunction/ damage to the product, damage to data, or damage to other property, follow the notices below.**

- Do not use the device in the vicinity of a TV, radio, stereo equipment, mobile phone, or other electric devices. Otherwise, the device, TV, or radio may generate noise.
- Do not expose the device to excessive dust or vibrations, or extreme cold or heat (such as in direct sunlight, near a heater, or in a car during the day) to prevent the possibility of panel disfiguration, damage to the internal components or unstable operation.
- Do not place vinyl, plastic or rubber objects on the device, since this might discolor the panel.
- When cleaning the device, use a soft, dry/dry or slightly damp cloth. Do not use paint thinners, solvents, cleaning fluids, or chemical-impregnated wiping cloths.
- This disk containing the software is not meant for use with an audio/visual system (CD player, DVD player, etc.). Do not attempt to use the disk on equipment other than a computer.

## Information

- The software included in the Cubase AI DVD-ROM and the copyrights thereof are under exclusive ownership by Steinberg Media Technologies GmbH.
- The software included in the TOOLS for UR824 CD-ROM and the copyrights thereof are under exclusive ownership by Yamaha.
- This manual is the exclusive copyrights of Yamaha Corporation.
- Copying of the software or reproduction of this manual in whole or in part by any means is expressly forbidden without the written consent of the manufacturer.
- Steinberg Media Technologies GmbH and Yamaha Corporation make no representations or warranties with regard to the use of the software and documentation and cannot be held responsible for the results of the use of this manual and the software.
- The screen displays as illustrated in this manual are for instructional purposes, and may appear somewhat different from the screens which appear on your computer.
- Copying of the commercially available musical data including but not limited to MIDI data and/or audio data is strictly prohibited except for your personal use.

- This product incorporates and bundles computer programs and contents in which Steinberg Media Technologies GmbH and Yamaha Corporation own copyrights or with respect to which it has license to use others' copyrights. Such copyrighted materials include, without limitation, all computer software, style files, MIDI files, WAVE data, musical scores and sound recordings. Any unauthorized use of such programs and contents outside of personal use is not permitted under relevant laws. Any violation of copyright has legal consequences. **DON'T MAKE, DISTRIBUTE OR USE ILLEGAL COPIES.**
- Windows is a registered trademark of Microsoft® Corporation in the United States and other countries.
- Apple, Mac and Macintosh are trademarks of Apple Inc., registered in the U.S. and other countries.
- Steinberg and Cubase are registered trademarks of Steinberg Media Technologies GmbH.
- The company names and product names in this manual are the trademarks or registered trademarks of their respective companies.
- Software may be revised and updated without prior notice.

# Introduction

## A Message From the Development Team

Thank you for choosing the UR824 USB Audio Interface. The UR824 brings the sum total of our experience and know-how together with invaluable feedback from our customers throughout the world. Throughout the Yamaha n-series and Steinberg MR series our focus has been on integrating consistently outstanding sonic design with features and software that are truly useful from a musician's perspective. The UR824 carries on this uncompromising approach, offering refined sound and functionality in a 1U rack mount unit.

With the goal of creating a product that would be of maximum value for the longest time in mind, the development process began with in-depth review of the many comments received from users as a starting point for the design and basic specifications. Visual design, the feel of buttons and knobs, trial-and-error sonic evaluation of parts, and seamless software integration are just some of the elements to which every member of the development team devoted their full attention and passion. The entire team is rightly proud of the results, and we are delighted to be able to offer this product to our valued customers.

But this is just the beginning. The most important chapter unfolds when our customers use the product to support and augment their creativity, making it a part of their musical lives. Our greatest hope is that we are able to contribute in some way to the creation and expression of new music that will bring our customers' artistic vision to life.

The Steinberg Hardware Development Team

## Included Accessories

### Accessories

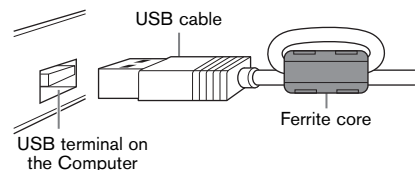
- AC power adaptor (PA-300C or equivalent)
- Power cable
- Getting Started (this book)
- ESSENTIAL PRODUCT LICENSE INFORMATION card
- TOOLS for UR824 CD-ROM
- Cubase AI DVD-ROM
- USB cable
- Ferrite core
- Rubber stoppers x 4

### NOTICE

If the ESSENTIAL PRODUCT LICENSE INFORMATION card is lost or stolen, Steinberg Media Technologies GmbH and Yamaha Corporation cannot reissue it.

### NOTE

- To prevent electromagnetic interference, fasten the ferrite core to the USB cable near the USB terminal on the computer.



- When using the unit on a slippery surface, attach the rubber stoppers to the specified location on the bottom panel of this device to prevent sliding.

## Disk Contents

### TOOLS for UR824 CD-ROM

- **Operation Manual**

This is the Operation Manual in PDF file format. For details, refer to the section “How to Read the Manual” (page 9).

- **TOOLS for UR824**

TOOLS for UR824 is necessary when connecting the device to a computer. When you install the TOOLS for UR824, the following two software programs will be installed. For instructions on installation, refer to the section “Setup” (page 12).

- **Yamaha Steinberg USB Driver**

This software allows communication between the device and a computer.

- **Steinberg UR824 Applications**

This software allows setting the parameters of the device from a computer or using the Link function between the device and Cubase series. The software consists of the following four software components.

- **dspMixFx UR824**

This software lets you set the device when using it with a DAW (Digital Audio Workstation) software other than Cubase series.

- **UR824 Extension**

This software allows you to link the device with Cubase series (for versions which supports the link function).

To use this Link function, you will need to install Cubase series version 5.5 or higher.

- **Sweet Spot Morphing Channel Strip (VST Plug-in version)**

This processing effect is a multi-effect that combines compressor and equalizer. This is the VST Plug-in version (VST3.0) of the DSP effect equipped with the device.

- **REV-X (VST Plug-in version)**

This processing effect is a digital reverb platform developed by Yamaha for professional audio devices. This is the VST Plug-in version (VST3.0) of the DSP effect equipped with the device.

## Cubase AI DVD-ROM

### Cubase AI

Cubase AI is an entry-level program modeled on the flagship Cubase DAW software made by Steinberg, and provides basic function for the music recording/production. For instructions on installation, refer to the section “Setup” (page 12).

### NOTE

For the latest information on the software contained in the accessory disk, please see the Steinberg web site below. Future upgrades of application and system software and any changes in specifications are announced separately on the website.

<http://www.steinberg.net>



# How to Read the Manual

## Types and Contents

### Getting Started (this book)

Read this manual when setting up the device. After finishing the setup as indicated in this manual, read the Operation Manual.

### Operation Manual (PDF file)

This manual provides instructions on how to use the device and gives detailed information on specific functions. It is included in the TOOLS for UR824 CD-ROM.

#### NOTE

- For contents of the operation manual, refer to the section “Contents of the Operation Manual” (page 21).
- To view PDF files, you will need to install Adobe Reader on your computer. You can download the latest Adobe Reader at the following web site.  
<http://www.adobe.com>

## Conventions

### Windows or Mac

When the procedures or explanations are specific to only one of the platforms, Windows or Mac, this is properly indicated in the manual. When the platforms do not appear, procedures or explanations are for both Windows and Mac.

## Procedures

“ → ” appears on some procedures in the manual. For example, the string [Devices] → [Device Setup] → [Control Panel] indicates that you should perform the procedures in the following order.

1. Click the [Devices] menu.
2. Select the [Device Setup] option.
3. Click the [Control Panel] button.

## Keyboard Shortcuts

[Windows modifier key]/[Mac modifier key]+[key] shows the shortcut keys. For example, [Ctrl]/[command]+[Z] means “press [Ctrl] under Windows or [command] under Mac, then press [Z].”

## Different Cubase Programs

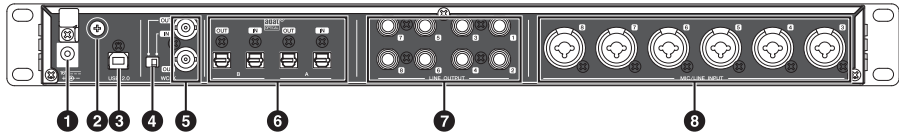
The phrase “Cubase series” applies to all Cubase programs and versions (except Cubase LE). If the instructions are only for Cubase, “Cubase only” appears in the manual.

## Screens

This manual predominantly uses screenshots of Windows. However, Mac screenshots are used when instructions of the function apply only to the Mac.

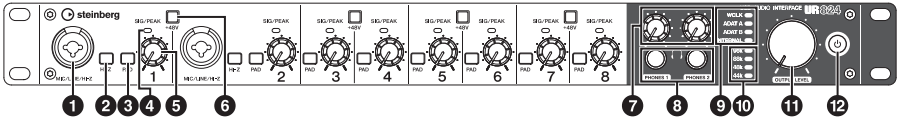
# Panel Controls and Terminals

## Rear Panel



- ❶ DC IN 16V
- ❷ Grounding screw
- ❸ USB2.0 (USB port)
- ❹ WCLK switch
- ❺ WCLK IN (OUT) / OUT (BNC connector)
- ❻ OPTICAL A/B IN/OUT (optical)
- ❼ LINE OUTPUT 1–8 (phone type, balanced/unbalanced)
- ❽ MIC/LINE INPUT 3–8 (XLR/phone type, balanced/unbalanced)

# Front Panel



- ❶ MIC/LINE/HI-Z (XLR/phone type, balanced/unbalanced)
- ❷ HI-Z switch
- ❸ PAD switch
- ❹ SIG/PEAK lamp
- ❺ INPUT GAIN knob
- ❻ +48V button
- ❼ PHONES knob 1/2
- ❽ PHONES 1/2 (phone type, stereo)
- ❾ Word clock source lamp
- ❿ Sample rate lamp
- ⓫ OUTPUT LEVEL knob
- ⓬ Power button

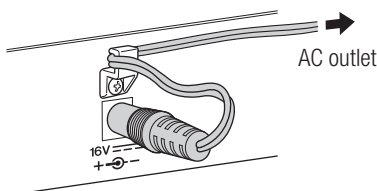
# Setup

## 1. Setting up the Power Supply

### Connecting the AC Power Adaptor

1. **Insert the plug of the AC power adaptor into the DC IN 16V jack on the device.**

To prevent accidental unplugging of the cable during operation, wrap the cable of AC power adaptor around the cable clip.



2. **Insert the plug of the power cable into the AC power adaptor.**
3. **Insert the plug of the power cable into the proper AC outlet on the wall.**

### **! WARNING**

**Only use the included AC power adaptor (or an equivalent recommended by Yamaha). Using the wrong adaptor can result in damage to the device or overheating.**

### **! CAUTION**

**Remove the electric plug from the outlet when the device is not be used for extended periods of time, or during electrical storms.**

### **NOTICE**

- To avoid generating unwanted noise, make sure there is adequate distance between the power adaptor and the device.
- Avoid tightening the cord more than necessary or pulling on the cord strongly while it is wrapped around the cable clip, in order to prevent wear on the cord or possible breakage of the clip.

## Turning the Power On and Off

### Power on

Press the power button (⏻). The power button will light.

### Power off

Hold down the power button (⏻) for over one second. The power button will light dimly.

The device is equipped with an automatic power off function. When this function is enabled, the power of the device will turn off automatically (after thirty minutes) when one of the following actions is performed. The power button will flash during the thirty-minute interval.

- Turning off the computer.

- Disconnecting the USB cable between the device and the computer.

For instructions on enabling/disabling this automatic power off function, refer to the section “Control Panel of the Audio Driver” in the Operation Manual.

### **CAUTION**

**Before you connect external devices to the device, turn off the power to all devices after setting all volume levels to minimum. Otherwise, electrical shock, hearing loss, or damage to the components may occur.**

### **NOTICE**

- Even when the device is turned off, electricity is still flowing to the device at the minimum level. When you are not using the device for a long time, make sure you unplug the AC power adaptor from the wall AC outlet.
- Some settings on the device will not be saved to the device if the power is turned off by some means other than using the power button or automatic power off function.

## 2. Installing Cubase AI

### **NOTE**

- You are only permitted to use this software pursuant to the terms and conditions of the “End User License Agreement” shown during the installation.

- If you have already installed a version of Cubase series that is compatible with operation with the device (page 8), the instructions on Installing Cubase AI described below are not necessary.

## Installation

- 1. Start the computer and log on to the Administrator account.**
- 2. Insert the Cubase AI DVD-ROM into the DVD-ROM drive.**
- 3. When the “WELCOME TO CUBASE AI” window appears, click the corresponding national flag icon to choose your preferred language.**

### **NOTE**

If this window does not appear automatically, open the DVD-ROM then double-click the file “Start Center.”

- 4. Follow the on-screen instructions to install the software.**

Installation may take a few minutes.

## User Registration and Product Registration

Register your personal information and products on “MySteinberg” in the Steinberg web site. For details, refer to the following web site.

<http://www.steinberg.net/en/mysteinberg.html>

The installation for Cubase AI is now completed.

## 3. Installing TOOLS for UR824

### NOTE

You are only permitted to use this software pursuant to the terms and conditions of the “License Agreement” shown during the installation.

**Windows** .....page 14

**Mac** .....page 15

## Windows

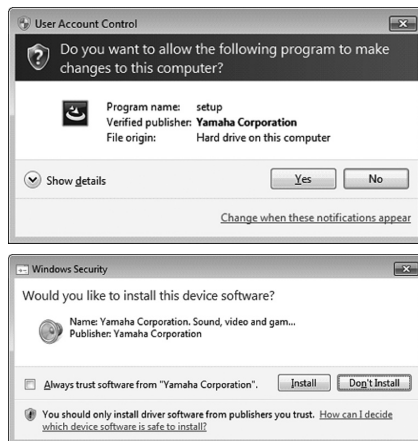
### Preparation

If the following warning messages appear during the installation, click [Continue Anyway], [Yes], or [Install].

Example warning message on Windows XP



Example warning messages on Windows Vista/Windows 7



### Installation

1. Turn off the computer and device.
2. Disconnect all USB devices other than the mouse and keyboard from the computer.
3. Start the computer and log on to the Administrator account.
4. Insert the TOOLS for UR824 CD-ROM into the CD-ROM drive.
5. Open the CD-ROM then double-click the file “setup.exe.”
6. Follow the on-screen instructions to install the software.

Install the following software in order.

- Yamaha Steinberg USB Driver
- Steinberg UR824 Applications

**7. When installation has been completed, click [Finish].**

If a window requiring you to restart your computer appears, follow the on-screen instructions and restart the computer.

## Device Connection

**8. Connect the device directly to the computer by using the included USB cable.**

Make sure to not connect it to a USB hub.

**9. Turn on the device.**

**Windows XP:**

The “Found New Hardware Wizard” window appears. Go on to step 10.

**Windows Vista/Windows 7:**

Go on to step 13.

**10. If the “Can Windows connect to Windows Update to search for software?” message appears in the middle of the window, select “No, not this time” then click [Next].**

**11. Confirm that the “Install the software automatically” has been selected then click [Next].**

**12. When the installation has been completed, click [Finish].**

## Confirmation of Installation

**13. Open the “Device Manager” window as follows.**

**Windows XP:**

[Start] → [Control Panel] → ([Performance and Maintenance]) → [System] → [Hardware] tab → [Device Manager]

**Windows Vista/Windows 7:**

[Start] → [Control Panel] → ([Hardware and Sound]) → [Device Manager]

**14. Click on the [+] mark or [>] mark next to “Sound, video and game controllers.”**

**15. Confirm that the device name is listed.**

Installation of the TOOLS for UR824 is now completed.

## Mac

### Installation

- 1. Turn off the computer and device.**
- 2. Disconnect all USB devices other than the mouse and keyboard from the computer.**
- 3. Start the computer and log in to the Administrator account.**
- 4. Insert the TOOLS for UR824 CD-ROM into the CD-ROM drive.**

5. Open the CD-ROM then double-click the file “TOOLS for UR824.mpkg.”
6. Follow the on-screen instructions to install the software.
7. When installation has been completed, click [Restart] to restart the computer.

## Device Connection

8. Connect the device directly to the computer by using a USB cable.  
Make sure to not connect it to a USB hub.
9. Turn on the device.

## Confirmation of Installation

10. Open the “Audio MIDI Setup” window as follows.  
[Macintosh HD] → [Applications] → [Utilities] → [Audio MIDI Setup]
11. Confirm that the device name is listed in the following.  
**Mac OS X 10.5:**  
In “Properties For:”  
**Mac OS X 10.6:**  
In the left column

Installation of the TOOLS for UR824 is now completed.

## 4. Downloading the Licenses (Activation)

To use the Sweet Spot Morphing Channel Strip (VST Plug-in version) and REV-X (VST Plug-in version) which are installed in Step 3 in “Installing TOOLS for UR824” (page 14), download their licenses via the Internet by using the activation code described on the ESSENTIAL PRODUCT LICENSE INFORMATION card.

1. Launch the “eLicenser Control Center” as follows.

### Windows:

[Start] → [All Programs] → [eLicenser] → [eLicenser Control Center]

### Mac:

[Macintosh HD] → [Applications] → [eLicenser Control Center]

2. Click [Enter Activation Code].
3. Enter the Activation Code described on the included ESSENTIAL PRODUCT LICENSE INFORMATION card.
4. Follow the on-screen instructions to download the licenses.

### NOTE

If you connect a USB-eLicenser (USB protection device) to your computer, a window requiring you to select the destination of the license appears. Follow the on-screen instructions to select the device.

The download licenses are now completed.



# Basic Operations

## Introduction

This section explains the connection examples and audio driver settings on DAW software. For more detailed usage, refer to the section “Usage Examples” in the Operation Manual.

### **CAUTION**

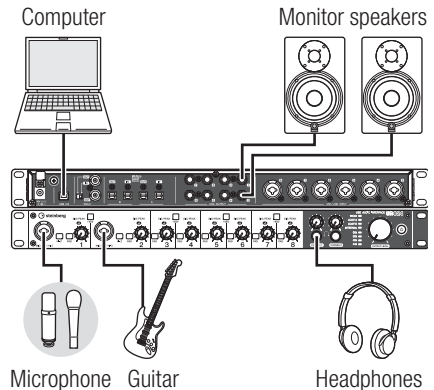
**Make sure to set all volume levels to minimum before connecting or disconnecting the external device. Otherwise, high-volume output may damage your hearing or equipment.**

### **NOTICE**

Be sure to observe the following points when connecting to the computer's USB interface. Failing to do so may result in the computer freezing or shutting down, as well as corruption or even loss of data.

- Before turning on/off the device or plugging/unplugging the USB cable, quit any open application software on the computer.
- Before turning on the device, exit from any power-saving mode of the computer (such as suspend, sleep, standby).
- Before turning on the device, connect the device to the computer.
- Wait for six seconds or more between these operations: (1) when turning off the device then on again, or (2) when alternately connecting/disconnecting the USB cable.

## Connection Example



## Configuring Audio Driver Settings on the DAW Software

### Cubase Series Programs

1. **Make sure that all applications have been quit.**
2. **Connect the device directly to the computer by using the included USB cable.**

#### **NOTE**

(Windows only) Make sure to use the same USB port as the one used in the installation procedure when you connect the device to the computer again. If you connect them to a different USB port, you will have to install the driver again.

3. **Turn on the device.**

#### 4. Launch the Cubase series program as follows.

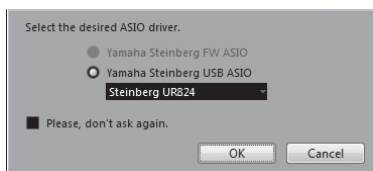
##### Windows:

[Start] → [All Programs] →  
[Steinberg (Cubase series)] →  
[(Cubase series)]

##### Mac:

[Macintosh HD] → [Applications] →  
[(Cubase series)]

#### 5. When the following window appears while the Cubase series program is launching, confirm that the device is selected, then click [OK].



The audio driver settings are now completed.

For instructions on using Cubase series programs, refer to the PDF manual, available from [Help] in the Cubase series menu. For instructions on using the device, refer to the Operation Manual.

## Programs Other Than Cubase Series

1. Make sure that all applications have been quit.
2. Connect the device directly to the computer by using the included USB cable.

#### 3. Turn on the device.

#### 4. Launch the DAW software.

#### 5. Open the audio driver settings window.

#### 6. Set the audio driver settings.

The audio driver settings are now completed.

For instructions on using the DAW software, refer to your particular DAW's software manual. For instructions on using the device, refer to the Operation Manual.

# Troubleshooting

## Turning Off the Power Automatically, or Flashing the Power Button

- **Is the automatic power off function enabled?**

Refer to the section “Control Panel of the Audio Driver” in the Operation Manual to disable this function.

## No Sound

- **Are the volume controls of the device set to appropriate levels?**

Confirm the OUTPUT LEVEL knob and PHONES knob.

- **Are the microphones and monitor speakers connected to the device properly?**

Refer to the section “Connection Examples” (page 17) to confirm the connection.

- **Are the audio driver settings on DAW software set properly?**

Refer to the section “Configuring the Audio Driver Settings on DAW Software” (page 17) to set it.

- **Is the “ASIO Driver” setting on the Cubase series program set properly?**

From the Cubase series menu, open the [Devices] → [Device Setup] → [VST Audio System], then confirm that the “Yamaha Steinberg USB ASIO” (Windows) or “Steinberg UR824” (Mac) is selected on the “ASIO Driver.”

- **Was the power of the device turned on before starting the DAW software?**

Before starting the DAW software, connect the device to a computer and turn on the power of the device.

- **Is the device connected to a computer via a USB hub?**

Connect it directly without using a USB hub.

- **Has TOOLS for UR824 been installed properly?**

Refer to Step 3 in “Installing TOOLS for UR824” (page 14) to confirm it.

- **Are any USB devices you are not using connected to the computer?**

Remove them then confirm the sound.

- **Are any other applications running at the same time?**

Quit all applications you are not using then confirm the sound.

## Unusual Sound (noise, interruption, or distortion)

- **Is the SIG/PEAK lamp lit in red?**

Lower the INPUT GAIN level, or turn on the PAD switch.

- **Is the buffer size set too low?**

Refer to the section “Control Panel of the Audio Driver” in the Operation Manual to confirm the buffer size.

- **Is the Clock Source lamp flashing?**

The Clock Source lamp flashes when the word clock is not synchronized to the clock source. Refer to the section “Control Panel of the Audio Driver” in the Operation Manual to set it.

- **Does your computer satisfy the system requirements?**

Confirm the system requirements. For the latest information, see the Steinberg web site below.  
<http://www.steinberg.net>

- **Are you recording or playing long continuous sections of audio?**

The audio data processing capabilities of your computer will depend on a number of factors including CPU speed and access to external devices. Reduce the audio tracks then confirm the sound.

- **Is a network adaptor for wired/wireless LAN running?**

Disable the suspected network adaptor. Some network adaptors can cause noise.

# Appendix

## Contents of the Operation Manual

### Introduction

Contents in this Operation Manual  
Features

### Panel Controls and Terminals (Details)

Rear Panel  
Front Panel

### Panel Controls for the Software Programs

Control Panel of the Audio Driver  
dspMixFx UR824  
Dedicated Windows for Cubase Series  
Sweet Spot Morphing Channel Strip  
(Channel Strip)  
REV-X

### Usage Examples

Introduction  
Recording with the Channel Strip and  
REV-X  
Connecting the Mic Preamp  
Using the Device Without a Computer

### Appendix

Glossary  
Contents of the Getting Started Section  
Signal Flow  
Block Diagrams

## Uninstalling TOOLS for UR824

**Windows**.....page 21

**Mac** .....page 22

## Windows

Remove the following two software components.

- Yamaha Steinberg USB Driver
- Steinberg UR824 Applications

- 1. Turn off the computer.**
- 2. Disconnect all USB devices other than the mouse and keyboard from the computer.**
- 3. Start the computer and log on to the Administrator account.**
- 4. Open the window for the uninstall operation as follows.**

### Windows XP:

[Start] → [Control Panel] → [Add or Remove Programs]

### Windows Vista/Windows 7:

[Start] → [Control Panel] → [Uninstall a Program]

- 5. Select one of the software components from the list.**
- 6. Uninstall them as follows.**

### Windows XP:

Click [Change/Remove]/[Remove]. Follow the on-screen instructions to remove the software.

### Windows Vista/Windows 7:

Click [Uninstall]/[Uninstall/Change]. Follow the on-screen instructions to remove the software.

Uninstallation of TOOLS for UR824 is now completed.

## Mac

Remove the folders and files of the following five software components.

- Yamaha Steinberg USB Driver
- dspMixFx UR824
- UR824 Extension
- Sweet Spot Morphing Channel Strip
- REV-X

### Yamaha Steinberg USB Driver

[System] → [Library] → Extensions  
YamahaSteinbergUSBAudio.kext

[Applications] → [Yamaha] →  
[USBDriver]

Yamaha Steinberg USB Control Panel.app

[Library] → [PreferencePanels]  
Yamaha Steinberg USB.prefPane

[Library] → [Preferences]  
com.yamaha.YamahaSteinbergUSBDriver.  
plist

[Library] → [Audio] → [MIDI Drivers]  
YamahaSteinbergUSBMIDI.plugin

[Library] → [Audio] → [MIDI Devices] →  
[Yamaha] → [Images]

USB\_1500.tiff

USB\_1502.tiff

USB\_1503.tiff

[Library] → [Receipts]

YamahaSteinbergUSBAudioDriver.pkg

YamahaSteinbergUSBControlPanel.pkg

YamahaSteinbergUSBDriverplist.pkg

YamahaSteinbergUSBMIDIPlugIn.pkg

YamahaSteinbergUSBMIDIIcon.pkg

YamahaSteinbergUSBPrefPane.pkg

### dspMixFx UR824

[Applications]

dspMixFx\_UR824.app

### UR824 Extension

[Library] → [Application Support] →  
[Steinberg] → [Components]  
ur824\_extension.bundle

[Library] → [Receipts]

Steinberg UR824 Extension.pkg

### Sweet Spot Morphing Channel Strip

[Library] → [Audio] → [Plug-Ins] →  
[VST3] → [Steinberg] → [UR]

UR-ChStrip\_m.vst3

UR-ChStrip\_s.vst3

UR824-ChStrip\_m.vst3

UR824-ChStrip\_s.vst3

### REV-X

[Library] → [Audio] → [Plug-Ins] →  
[VST3] → [Steinberg] → [UR]

UR-REV-X\_HALL.vst3

UR-REV-X\_ROOM.vst3

UR-REV-X\_PLATE.vst3

UR824-REV-X\_HALL.vst3


UR824-REV-X\_ROOM.vst3

UR824-REV-X\_PLATE.vst3

Uninstallation of TOOLS for UR824 is now completed.

# Specifications

## Technical Specifications

<b>MIC/LINE INPUT (Balanced)</b>	
Frequency Response	+0.1/-0.1dB, 20Hz to 22kHz
Dynamic Range	105dB, A-Weighted
THD+N	0.0014%, 1kHz, -1dBFS, 22Hz/22kHz BPF
Crosstalk	>125dB, 1kHz
Maximum Input Level	+24dBu
Input Impedance	4k Ohm
Maximum Gain	60dB
Adjustable Gain	44dB
Pad	-26dB
<b>HI-Z INPUT (Unbalanced)</b>	
Maximum Input Level	+10dBV
Input Impedance	1M Ohm
<b>LINE OUTPUT (Balanced)</b>	
Frequency Response	+0.1/-0.1dB, 20Hz to 22kHz
Dynamic Range	117dB, A-Weighted
THD+N	0.0009%, 1kHz, -1dBFS, 22Hz/22kHz BPF
Crosstalk	>130dB, 1kHz
Maximum Output Level	+18dBu
Output Impedance	75 Ohm
<b>PHONES 1/2</b>	
Maximum Output Level	75mW+75mW, @40 Ohm
<b>USB</b>	
Specification	USB2.0, 24bit, 44.1kHz/48kHz/88.2kHz/96kHz
<b>XLR INPUT</b>	
Polarity	 <p>Pin 1: Ground Pin 2: Hot (+) Pin 3: Cold (-)</p>

## General Specifications

<b>Power Requirements</b>	38.4 W (PA-300C)
<b>Dimensions (W x H x D)</b>	480 x 44 x 275 mm
<b>Net Weight</b>	3.1 kg
<b>Operating Free-air Temperature Range</b>	0 to +40 °C
<b>Included Accessories</b>	AC power adaptor (PA-300C or equivalent) Power cable Getting Started (this book) ESSENTIAL PRODUCT LICENSE INFORMATION card TOOLS for UR824 CD-ROM Cubase AI DVD-ROM USB cable Ferrite core Rubber stoppers x 4

Specifications and descriptions in this manual are for information purposes only. Steinberg/Yamaha Corp. reserves the right to change or modify products or specifications at any time without prior notice. Since specifications, equipment or options may not be the same in every locale, please check with your Steinberg/Yamaha dealer.

Inrush Current based on EN 55103-1:2009

0.7A (on initial switch-on)

0.7A (after a supply interruption of 5s)

Conforms to Environments: E1, E2, E3 and E4



**OBSERVERA!**

Apparaten kopplas inte ur växelströmskällan (nätet) så länge som den är ansluten till vägguttaget, även om själva apparaten har stängts av.

**ADVARSSEL:** Netspændingen til dette apparat er IKKE afbrudt, så længe netledningen sidder i en stikkontakt, som er tændt — også selvom der er slukket på apparatets afbryder.

**VAROITUS:** Laitteen toisiopiiriin kytketty käyttökytkin ei irroita koko laitetta verkosta.

(standby)

**IMPORTANT NOTICE FOR THE UNITED KINGDOM  
Connecting the Plug and Cord**

IMPORTANT. The wires in this mains lead are coloured in accordance with the following code:

BLUE : NEUTRAL

BROWN : LIVE

As the colours of the wires in the mains lead of this apparatus may not correspond with the coloured markings identifying the terminals in your plug proceed as follows:

The wire which is coloured BLUE must be connected to the terminal which is marked with the letter N or coloured BLACK.

The wire which is coloured BROWN must be connected to the terminal which is marked with the letter L or coloured RED.

Making sure that neither core is connected to the earth terminal of the three pin plug.

\* This applies only to products distributed by Yamaha Music U.K. Ltd.

(2 wires)

### Information for Users on Collection and Disposal of Old Equipment



This symbol on the products, packaging, and/or accompanying documents means that used electrical and electronic products should not be mixed with general household waste.

For proper treatment, recovery and recycling of old products, please take them to applicable collection points, in accordance with your national legislation and the Directives 2002/96/EC.

By disposing of these products correctly, you will help to save valuable resources and prevent any potential negative effects on human health and the environment which could otherwise arise from inappropriate waste handling.

For more information about collection and recycling of old products, please contact your local municipality, your waste disposal service or the point of sale where you purchased the items.

#### [For business users in the European Union]

If you wish to discard electrical and electronic equipment, please contact your dealer or supplier for further information.

#### [Information on Disposal in other Countries outside the European Union]

This symbol is only valid in the European Union. If you wish to discard these items, please contact your local authorities or dealer and ask for the correct method of disposal.

### Verbraucherinformation zur Sammlung und Entsorgung alter Elektrogeräte



Befindet sich dieses Symbol auf den Produkten, der Verpackung und/oder beiliegenden Unterlagen, so sollten benutzte elektrische Geräte nicht mit dem normalen Haushaltsabfall entsorgt werden.

In Übereinstimmung mit Ihren nationalen Bestimmungen und den Richtlinien 2002/96/EC bringen Sie alte Geräte bitte zur fachgerechten Entsorgung, Wiederaufbereitung und Wiederverwendung zu den entsprechenden Sammelstellen.

Durch die fachgerechte Entsorgung der Elektrogeräte helfen Sie, wertvolle Ressourcen zu schützen, und verhindern mögliche negative Auswirkungen auf die menschliche Gesundheit und die Umwelt, die andernfalls durch unsachgerechte Müllentsorgung auftreten könnten.

Für weitere Informationen zum Sammeln und Wiederaufbereiten alter Elektrogeräte kontaktieren Sie bitte Ihre örtliche Stadt- oder Gemeindeverwaltung, Ihren Abfallentsorgungsdienst oder die Verkaufsstelle der Artikel.

#### [Information für geschäftliche Anwender in der Europäischen Union]

Wenn Sie Elektrogeräte ausrangieren möchten, kontaktieren Sie bitte Ihren Händler oder Zulieferer für weitere Informationen.

#### [Entsorgungsinformation für Länder außerhalb der Europäischen Union]

Dieses Symbol gilt nur innerhalb der Europäischen Union. Wenn Sie solche Artikel ausrangieren möchten, kontaktieren Sie bitte Ihre örtlichen Behörden oder Ihren Händler und fragen Sie nach der sachgerechten Entsorgungsmethode.

### Information concernant la Collecte et le Traitement des déchets d'équipements électriques et électroniques.



Le symbole sur les produits, l'emballage et/ou les documents joints signifie que les produits électriques ou électroniques usagés ne doivent pas être mélangés avec les déchets domestiques habituels.

Pour un traitement, une récupération et un recyclage appropriés des déchets d'équipements électriques et électroniques, veuillez les déposer aux points de collecte prévus à cet effet, conformément à la réglementation nationale et aux Directives 2002/96/EC.

En vous débarrassant correctement des déchets d'équipements électriques et électroniques, vous contribuerez à la sauvegarde de précieuses ressources et à la prévention de potentiels effets négatifs sur la santé humaine qui pourraient advenir lors d'un traitement inapproprié des déchets.

Pour plus d'informations à propos de la collecte et du recyclage des déchets d'équipements électriques et électroniques, veuillez contacter votre municipalité, votre service de traitement des déchets ou le point de vente où vous avez acheté les produits.

#### [Pour les professionnels dans l'Union Européenne]

Si vous souhaitez vous débarrasser des déchets d'équipements électriques et électroniques veuillez contacter votre vendeur ou fournisseur pour plus d'informations.

#### [Information sur le traitement dans d'autres pays en dehors de l'Union Européenne]

Ce symbole est seulement valable dans l'Union Européenne. Si vous souhaitez vous débarrasser de déchets d'équipements électriques et électroniques, veuillez contacter les autorités locales ou votre fournisseur et demander la méthode de traitement appropriée.

### Información para Usuarios sobre Recolección y Disposición de Equipamiento Viejo



Este símbolo en los productos, embalaje, y/o documentación que se acompaña significa que los productos electrónicos y eléctricos usados no deben ser mezclados con desechos hogareños corrientes.

Para el tratamiento, recuperación y reciclado apropiado de los productos viejos, por favor llévelos a puntos de recolección aplicables, de acuerdo a su legislación nacional y las directivas 2002/96/EC.

Al disponer de estos productos correctamente, ayudará a ahorrar recursos valiosos y a prevenir cualquier potencial efecto negativo sobre la salud humana y el medio ambiente, el cual podría surgir de un inapropiado manejo de los desechos.

Para mayor información sobre recolección y reciclado de productos viejos, por favor contacte a su municipio local, su servicio de gestión de residuos o el punto de venta en el cual usted adquirió los artículos.

#### [Para usuarios de negocios en la Unión Europea]

Si usted desea deshacerse de equipamiento eléctrico y electrónico, por favor contacte a su vendedor o proveedor para mayor información.

#### [Información sobre la Disposición en otros países fuera de la Unión Europea]

Este símbolo sólo es válido en la Unión Europea. Si desea deshacerse de estos artículos, por favor contacte a sus autoridades locales y pregunte por el método correcto de disposición.

### Informazioni per gli utenti sulla raccolta e lo smaltimento di vecchia attrezzatura



Questo simbolo sui prodotti, sull'imballaggio, e/o sui documenti che li accompagnano significa che i prodotti elettriche e elettroniche non dovrebbero essere mischiati con i rifiuti domestici generici.

Per il trattamento, recupero e riciclaggio appropriati di vecchi prodotti, li porti, prego, ai punti di raccolta appropriati, in accordo con la Sua legislazione nazionale e le direttive 2002/96/CE.

Smaltendo correttamente questi prodotti, Lei aiuterà a salvare risorse preziose e a prevenire alcuni potenziali effetti negativi sulla salute umana e l'ambiente, che altrimenti potrebbero sorgere dal trattamento improprio dei rifiuti.

Per ulteriori informazioni sulla raccolta e il riciclaggio di vecchi prodotti, prego contatti la Sua amministrazione comunale locale, il Suo servizio di smaltimento dei rifiuti o il punto vendita dove Lei ha acquistato gli articoli.

#### [Per utenti imprenditori dell'Unione europea]

Se Lei desidera disfarsi di attrezzatura elettrica ed elettronica, prego contatti il Suo rivenditore o fornitore per ulteriori informazioni.

#### [Informazioni sullo smaltimento negli altri Paesi al di fuori dell'Unione europea]

Questo simbolo è validi solamente nell'Unione europea. Se Lei desidera disfarsi di questi articoli, prego contatti le Sue autorità locali o il rivenditore e richieda la corretta modalità di smaltimento.

## ► Warranty Terms and Conditions

available as printed PDF file at

**[www.steinberg.net/warranty](http://www.steinberg.net/warranty)**

The Warranty Terms and Conditions available as printed PDF file at [www.steinberg.net/warranty](http://www.steinberg.net/warranty) apply only for countries of the European Economic Area (EEA) and Switzerland.

## ► Gewährleistungsbestimmungen

finden Sie als druckbare PDF Datei unter

**[www.steinberg.de/warranty](http://www.steinberg.de/warranty)**

Die Gewährleistungsbestimmungen in Schriftform sind als PDF-Datei unter [www.steinberg.de/warranty](http://www.steinberg.de/warranty) erhältlich und gelten nur für den Europäischen Wirtschaftsraum (EWR) und die Schweiz.

## ► Les conditions de garantie

se trouvent dans le document PDF imprimable sous

**[www.steinberg.net/warranty](http://www.steinberg.net/warranty)**

Les conditions de garantie disponibles au format PDF à la page [www.steinberg.net/warranty](http://www.steinberg.net/warranty) s'appliquent uniquement aux pays de l'Espace économique européen (EEE) et à la Suisse.

## ► Las condiciones de garantía

se encuentran en el documento PDF en

**[www.steinberg.net/warranty](http://www.steinberg.net/warranty)**

Los términos y condiciones de la garantía como archivo PDF para su impresión en [www.steinberg.net/warranty](http://www.steinberg.net/warranty) sólo están disponible en países del Espacio Económico Europeo (EEE) y Suiza.

## ► Termini e Condizioni di Garanzia

disponibili su file PDF stampabile all'indirizzo web

**[www.steinberg.net/warranty](http://www.steinberg.net/warranty)**

I termini e le condizioni della garanzia, disponibili in formato PDF all'indirizzo [www.steinberg.net/warranty](http://www.steinberg.net/warranty), sono validi soltanto per i paesi dell'Area Economica Europea (EEA) e per la Svizzera.

If you need support or further product information please contact the distributor in your country.

A list of distributors is available at this website:

**<http://www.steinberg.net/en/company/distributor.html>**

For assistance in determining who to contact, please contact "Headquarter SMTG."

Wenn Sie Unterstützung oder weitere Produktinformationen benötigen, wenden Sie sich bitte an den Vertrieb in Ihrem Land.

Eine Liste der Vertriebspartner finden Sie auf dieser Website:

**<http://www.steinberg.net/en/company/distributor.html>**

Wenn Sie Hilfe benötigen, an wen Sie sich wenden sollten, kontaktieren Sie bitte „Headquarter SMTG“.

Pour toute demande d'assistance ou d'information supplémentaire sur les produits, veuillez contacter le distributeur agréé dans votre pays.

La liste des distributeurs agréés est disponible sur le site Web suivant :

**<http://www.steinberg.net/en/company/distributor.html>**

Pour obtenir de l'aide sur les ressources à contacter, adressez-vous au « Siège de SMTG ».

Para solicitar asistencia o más información sobre el producto, póngase en contacto con el distribuidor de su país.

Encontrará una lista de distribuidores en el siguiente sitio web:

**<http://www.steinberg.net/en/company/distributor.html>**

Para consultas sobre el contacto adecuado, diríjase a "Headquarter SMTG."

Per ottenere assistenza o avere ulteriori informazioni sul prodotto, contattare il distributore locale.

L'elenco dei distributori è disponibile sul sito Web al seguente indirizzo:

**<http://www.steinberg.net/en/company/distributor.html>**

Per individuare il distributore da contattare, rivolgersi alla sede centrale SMTG.

如需更多支持和深层产品信息, 请联系您所在国家的代理商。

代理商列表请浏览下列网址:

**<http://www.steinberg.net/en/company/distributor.html>**

如需帮助决定联系哪方代理商, 请联系" SMTG总公司"。

**HEAD OFFICE**

**Steinberg Media Technologies GmbH**

Frankenstraße 18b, 20097 Hamburg, Germany

Tel: +49-(0)40-210 35 0

Steinberg Web Site  
<http://www.steinberg.net>

C.S.G., Pro Audio Division  
© 2011 Yamaha Corporation

106MWAP\*.\*-01A0

WW73410

