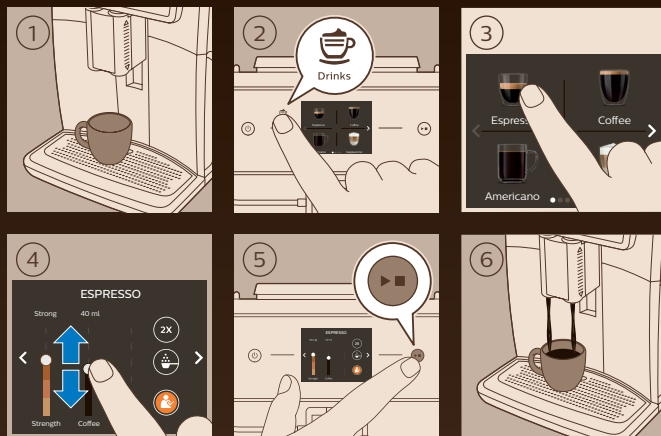
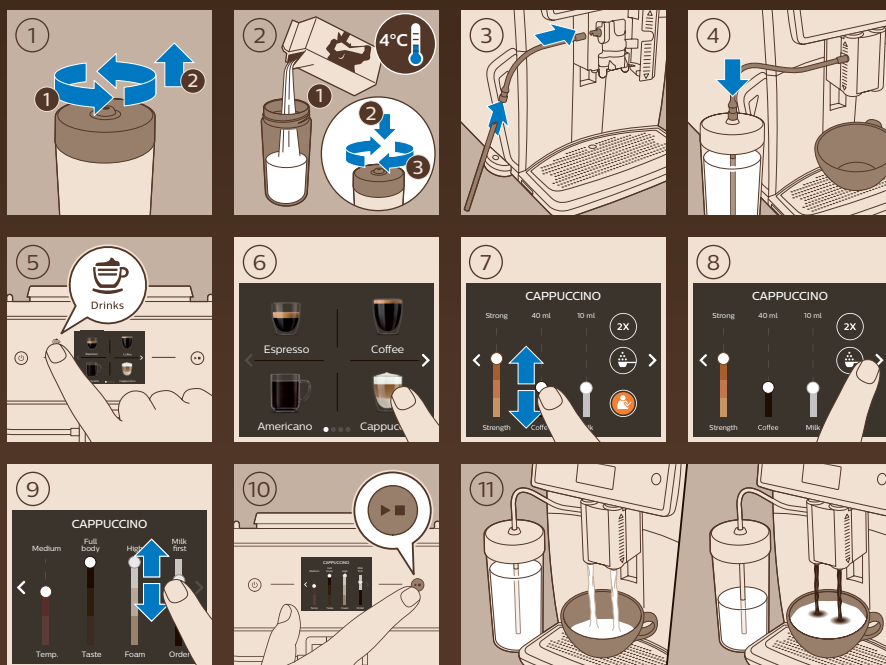


ESPRESSO



CAPPUCCINO



www.saeco.com/care

4219.460.4199.1

Saeco



Xelsis

SM7686, SM7685, SM7684
SM7683, SM7680



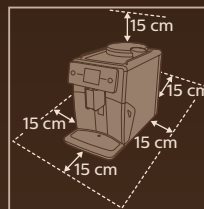
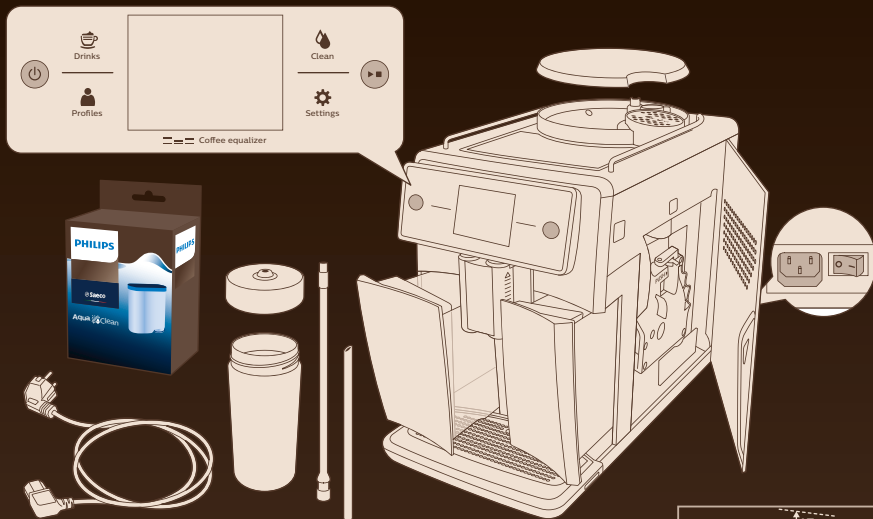
WWW.SAECO.COM/CARE

EN QUICKSTART GUIDE
CS STRUČNÝ NÁVOD
DE KURZANLEITUNG
HU GYORS ÁTTEKINTŐ ÚTMUTATÓ
ES ΟΔΗΓΟΣ ΓΡΗΓΟΡΗΣ ΕΝΑΡΞΗΣ
FR GUIDE DE DÉMARRAGE RAPIDE
IT GUIDA DI AVVIO RAPIDO
NL SNELSTARTGIDS

PL SKRÓCONA INSTRUKCJA OBSŁUGI
PT GUIA DE INÍCIO RÁPIDO
RO GHID DE ÎNȚIERE RAPIDĂ
RU КРАТКОЕ РУКОВОДСТВО
SL VODNIK ZA HITER ZAČETEK
SK NÁVOD NA RÝCHLE POUŽITIE
KK ЖҰМЫСТЫ БАСТАУДЫҢ
ҚЫСҚАША НҰСҚАУЛЫҒЫ

PHILIPS

Saeco, a Philips brand



FIRST USE

1. Plug the power cord into the wall outlet.
2. Press the power button on the machine.
3. Select a language: English, Italiano, Deutsch, Français.
4. Add water to the tank.
5. Insert the AquaClean filter.
6. Fill the water tank to the MAX level.
7. Close the water tank lid.
8. Brew a cup of water into a container.
9. Press the 'Clean' button on the control panel.
10. Brew another cup of water.
11. A screen asks: "Would you like to install the 5000 cups without descaling? AquaClean filter to enjoy?" with 'X' and checkmark options.

12. Open the AquaClean filter box.
13. Push the filter into the water tank. 5 sec.
14. Rinse the filter with water.
15. Place the filter in the machine.
16. Fill the water tank to the MAX level.
17. Close the water tank lid.
18. Brew a cup of water.
19. Place a container under the spout.
20. Screen: "ACTIVATING FILTER..."
21. Brew a cup of water.
22. Check the water level in the cup.
23. Wait 1 sec.
24. Brew a cup of water. 1 min.
25. Set water hardness: 1, 2, 3, 4.
26. Screen: "HEATING UP"
27. Screen: "RINSING"
28. Brew a cup of water.
29. Add coffee grounds to the filter.
30. Brew a cup of coffee.
31. Screen: "For more information, please visit www.saeco.com/care" with a QR code.