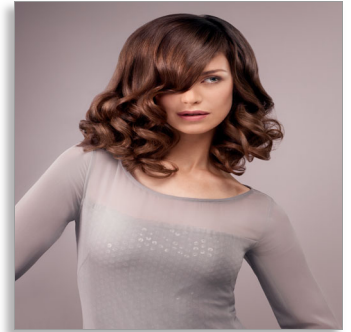


Philips
KeraShine curler

Care Edition

25 mm barrel
130 - 200 C temperature
Keratin Ceramic coating



HP8607/00



Style with care, for naturally looking curls

with Keratin infused Ceramic

Looking for curls that are easy to manage and feel natural, without the damage and dryness? The new KeraShine curler with 25mm barrel for natural looking curls features a protective keratin ceramic coating and variable temperature setting

Beautifully styled hair

- 25 mm barrel for natural looking curls
- 200°C top temperature for perfect styling results

Less hair damage

- Protective ceramic coating with Keratin infusion
- Rheostat wheel and 8 temperature settings

Ease of use

- Automatic shut-off after 60 min
- Safety stand for easy use
- Cool tip for easier and safer use
- 1.8 m power cord
- Universal voltage
- LED light tells you when the curler is ready to use

PHILIPS

Highlights

Care for your hair



Protective ceramic coating with Keratin infusion, for better care of your hair

Natural looking curls

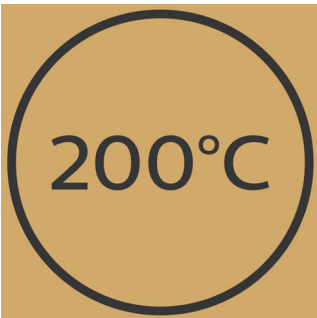


With the barrel diameter of 25 mm you can achieve a trendy curly look by creating natural looking, loose curls like no effort went into it.

Rheostat wheel

Rheostat wheel with 8 heat settings (from 130 to 200°C) allows you to choose the temperature that suits your hair type

200°C top temperature



Top temperature of 200°C guarantees perfect results even for thick hair, while minimizing hair damage.

Safe usage



Some hair straighteners and curling irons have been equipped with an automatic shut-off feature. This feature has been designed to provide peace of mind. If left on, the appliance will automatically switch off after 60 min.

Ready to use indicator

The LED light stops blinking when the curler has heated up and is ready to use.

Cool tip



The tip of the styler is made from a special heat insulating material to keep it cool; you can safely hold it while you're styling for optimal ease of use.

Specifications

Technical specifications

- Barrel diameter: 25 mm
- Maximum temperature: 200 °C
- Heating time: 60s
- Cord length: 1.8 m
- Color/finishing: black-white
- Heater type: PTC
- Voltage: worldwide
- Temperature range: 130-200

Features

- Ceramic coating
- Cool tip
- Ready for use indicator
- Swivel cord
- Hanging loop

Hair type

- End result: Natural looking curls
- Hair length: Medium, Long
- Hair thickness: Thin, Medium, Thick

Service

- 2-year worldwide guarantee

