



Experience the power of
BOSS products!

▶▶▶ www.boss.info



 **TONE CENTRAL**

Your Web Home for Free
**Patches, Instructional Vids,
Artist Tips, and More**

▶▶▶ bosstonecentral.com

COSM

Once a musical instrument generates sound vibrations, it reaches the human ear through various mediating objects, each of which significantly affects the sound. The material and configuration of the instrument, the electric/electronic/magnetic amplifying system, the air and the reverberation of the room all affect the final sound. Sound modeling, the latest DSP technology, "virtually" reconstructs these objects. Roland's breakthrough Composite Object Sound Modeling (COSM) uses the advantages of multiple modeling methods and succeeds in accurately emulating existing sounds, as well as producing sounds that have never before been created.

MDP

Roland/BOSS's innovative Multi-Dimensional Processing (MDP) analyzes audio signals in many dimensions and applies ideal effects to each. By giving different dynamic changes relative to the input signal in real time, MDP can create bold, all-new sounds with a previously unattainable range of expression.

BOSS PRODUCT CATALOG 2014

All specifications and appearances are subject to change without notice.

Roland, BOSS, Accu-Pitch, Blues Driver, COSM, eBand, LOOP STATION, METAL ZONE, MICRO BR, RHYTHM COACH, ROTARY ENSEMBLE, SLICER, SPACE ECHO, TSC, V-Guitar are either registered trademarks or trademarks of Roland Corporation in the United States and/or other countries.

Gracenote is a registered trademark of Gracenote, Inc. The Gracenote logo and logotype, and the "Powered by Gracenote" logo are trademarks of Gracenote.

ASIO is a trademark and software of Steinberg Media Technologies GmbH.

Company names and product names appearing in this document are registered trademarks or trademarks of their respective owners.

It is forbidden by law to make an audio recording, video recording, copy or revision of a third party's copyrighted work (musical work, video work, broadcast, live performance, or other work), whether in whole or in part, and distribute, sell, lease, perform, or broadcast it without the permission of the copyright owner.

Do not use this product for purposes that could infringe on a copyright held by a third party.

We assume no responsibility whatsoever with regard to any infringements of third-party copyrights arising through your use of this product.

This product can be used to record or duplicate audio or visual material without being limited by certain technological copy-protection measures. This is due to the fact that this product is intended to be used for the purpose of producing original music or video material, and is therefore designed so that material that does not infringe copyrights belonging to others (for example, your own original works) can be recorded or duplicated freely.

The copyright of content in this product (the sound waveform data, style data, accompaniment patterns, phrase data, audio loops and image data) is reserved by Roland Corporation.

Purchasers of this product are permitted to utilize said content (except song data such as Demo Songs) for the creating, performing, recording and distributing original musical works.

Purchasers of this product are NOT permitted to extract said content in original or modified form, for the purpose of distributing recorded medium of said content or making them available on a computer network.

Not Reissued...Reborn

A Sound Innovator

In 1977, the OD-1 Overdrive was released to wide acclaim, praised by guitarists everywhere for its warm, natural tone. Introduced the very next year, the DS-1 Distortion featured a more aggressive tone, inspiring countless players around the world with a new high-gain sound.

Since the introduction of these landmark pedals over 35 years ago, BOSS has continued to refine and perfect the technology of overdrive and distortion design.

The new OD-1X Overdrive and DS-1X Distortion represent the roots of BOSS craftsmanship and decades of experience in pursuing the "ideal distortion sound."

Reborn in 2014, the OD-1X and DS-1X keep the innovation going.

★★★★★ **5**
FIVE YEAR WARRANTY

Starting in April 2014, BOSS now offers a five-year warranty on its entire line of pedals in the compact series.

The packaging has also been refreshed with a simple and cool new design.



*The product warranty will be provided only within the territory of the authorized Roland distributor where the product is purchased. Regardless of any statements on the product package, the scope of the warranty (terms of validity and applicable conditions) is subject to the laws of the relevant country and the authorized Roland distributor's rules. For additional information, please contact customer support for the authorized Roland distributor in your region.



Distortion DS-1X

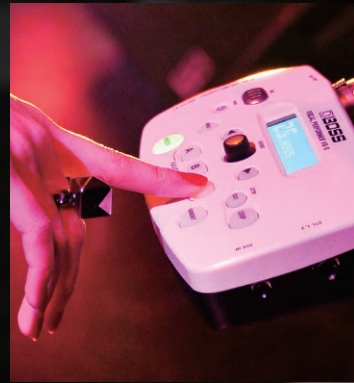
OverDrive OD-1X



*The BOSS compact series was awarded the 2011 Good Design / Long Life Design Award.



A Sound Innovator



CONTENTS



- COMPACT SERIES.....06
- TWIN PEDAL SERIES.....10
- TU SERIES.....11
- VOCAL PERFORMER.....12
- AD SERIES.....13
- LOOP STATION.....14
- MULTI EFFECTS.....16
- GUITAR PROCESSOR.....20
- BOSS TONE CENTRAL.....21
- eBand.....22
- BR SERIES.....23
- DR&DB SERIES.....24
- OTHER EQUIPMENT.....25
- SPECIFICATIONS.....26

Not Reissued...Reborn



OD-1X OverDrive

Special edition BOSS overdrive pedal with next-generation sound, feel, and response

- All-new design provides a superior playing experience that's unattainable with analog overdrive pedals
- Powerful real-time processing delivers rich, wide-range sounds with natural compression

• Current Draw 45 mA (DC 9 V)



MD-2 Mega Distortion

Nu-School Distortion with Massive Low End

- This pedal's dual Distortion and Gain Boost circuits take thick, heavy distortion sounds to a whole new level
- Special Gain Boost and Bottom controls let you shape your tone for maximum volume and low-end punch

• Current Draw 18 mA (DC 9 V)



BC-2 Combo Drive

British Combo-Amp Tone and Beyond

- Wide range of tones from classic crisp clean and punchy crunch to creamy overdrive with long sustain and beyond
- Natural and dynamic response to picking nuance
- Provides warm combo tones and authentic combo-amp cabinet resonance

• Current Draw 45 mA (DC 9 V)



ST-2 Power Stack

Authentic amp stack sounds from a stompbox

- Based on an extensive analysis of classic guitar amps, this pedal provides the ultimate in distortion tones
- Simply twist the Sound knob for super-dense crunches, intense drive, and powerful ultra high-gain tones

• Current Draw 36 mA (DC 9 V)



DS-1X Distortion

Special edition BOSS distortion pedal with next-generation sound, feel, and tonal response

- Powerful real-time processing adapts to your playing to provide ideal distortion tones in every register
- High-clarity distortion sound that's never muddy or boomy, even when playing two or more notes at the same time

• Current Draw 45 mA (DC 9 V)



MT-2 Metal Zone

BOSS's Most Popular Pedal!

- Features dual-gain circuitry for thick, tube stack distortion with heavy mids and lows and long-lasting sustain
- A 3-band EQ with semi-parametric mids takes your sound to the extreme

• Current Draw 20 mA (DC 9 V)



ML-2 Metal Core

Extreme Metal in a Compact Pedal

- The ML-2 delivers massive distortion and gain with heavy lows for music that requires a crushing sound
- The ML-2's ferocious and biting tone will slice through any blast beats your rhythm section can produce

• Current Draw 36 mA (DC 9 V)



FZ-5 Fuzz COSM

A Distorted Blast from the Past

- The FZ-5 uses COSM technology to authentically reproduce three famous vintage fuzz effects of the '60s and '70s
- Turn the FUZZ knob to BOOST and you'll create an intense distortion that even exceeds the originals

• Current Draw 36 mA (DC 9 V)



SD-1 SUPER OverDrive

Warm, Tube Drive Sounds

- Uses BOSS's asymmetric overdrive circuitry for warm, smooth overdrive sounds that respond to your picking style just like a tube amp
- Includes a Tone control to dial in just the right sound

• Current Draw 6 mA (DC 9 V)



OD-3 OverDrive

Natural Overdrive with Endless Sustain!

- Classic BOSS overdrive, based on a dual-stage design for bigger, fuller sounds
- Variable Drive and Tone controls create overdriven sounds from mild to extreme with almost endless sustain

• Current Draw 9 mA (DC 9 V)



BD-2 Blues Driver

The Perfect Tone for Blues

- Get the tone of a bluesy, vintage tube amp in a compact pedal capable of anything from warm overdriven sounds to full-on distortion
- Leaves the subtle nuances of your playing intact

• Current Draw 13 mA (DC 9 V)



FB-2 Feedbacker/Booster

The New-Breed Booster with Natural Feedback

- Wide tonal variety, from flat, clean boost to powerful mid-boost and bright, clear treble boost
- Boost characteristics can be changed continuously and smoothly from one knob
- Advanced feedback function provides smooth and natural amp feedback

• Current Draw 45 mA (DC 9 V)



for BASS

ODB-3 Bass OverDrive

Crunchy Overdrive Effects for Bass

- An overdrive effect designed to cover the entire frequency range of bass guitars, including 5-string basses
- Overdriven sounds can be blended with dry bass signal for maximum clarity and punch

• Current Draw 15 mA (DC 9 V)



CS-3 Compression Sustainer

Improves Your Overall Tone

- Compresses louder signals while boosting lower signals for smooth sustain without degrading the original sound quality
- Onboard EQ provides precise tonal control; low-noise design for super-quiet operation

• Current Draw 11 mA (DC 9 V)



OS-2 OverDrive/Distortion

Distortion and Overdrive Together At Last!

- A flexible pedal capable of producing overdrive, distortion, or a combination of both
- Get "in your face" distortion while maintaining the subtle nuances of single-coil guitar pickups

• Current Draw 12 mA (DC 9 V)



DS-1 Distortion

Used by Pros Everywhere

- A classic! Add some hard-edged distortion while preserving the subtle nuances of your playing dynamics
- A Tone control is provided for easy sound shaping

• Current Draw 4 mA (DC 9 V)



DS-2 TURBO Distortion

Two Distortions for the Price of One

- Features twin modes for an expanded range of distortion — taking you from blues-rock rhythms to searing leads at the press of a pedal or twist of a knob

• Current Draw 12 mA (DC 9 V)



AC-3 Acoustic Simulator COSM

Advanced Electric-To-Acoustic Guitar Modeling

- The AC-3 is a new-generation compact pedal that employs COSM modeling technology to transform any electric guitar into a variety of beautiful acoustics

• Current Draw 39 mA (DC 9 V)



GE-7 Equalizer

Powerful 7-Band EQ!

- Shape your sound and eliminate feedback with seven bands of equalization
- Includes frequencies ranging from 100Hz to 6.4kHz with a powerful 15dB boost/cut per band

• Current Draw 10 mA (DC 9 V)



for BASS

GEB-7 Bass Equalizer

Precise Tonal Control

- With a frequency range from 50 Hz to 10 kHz, the GEB-7 is ideal for any bass guitar, including 5-string basses
- Seven bands of EQ are available, affording greater control over the crucial midrange

• Current Draw 16 mA (DC 9 V)



Also Great for BASS

ICE-5 Chorus Ensemble

The Original Chorus
 ● Produces everything from mild, natural chorusing to the penetrating stereo chorus popular in contemporary music ● Covers a wide frequency range and includes both high- and low-cut filters



● Current Draw 22 mA (DC 9 V)

ICH-1 SUPER Chorus

A Unique Stereo Chorus
 ● Delivers a clean chorus sound with crystal-clear highs and a unique stereo effect, variable between the left and right speakers ● An EQ function adjusts the tonality of the chorus sound



● Current Draw 22 mA (DC 9 V)

for BASS

ICEB-3 Bass Chorus

A Chorus Pedal with Built-in Crossover
 ● A split-frequency chorus capable of applying warm, rich chorus to higher frequencies without muddying the lows ● A space synthesis effect guarantees a natural and spacious chorus effect



● Current Draw 22 mA (DC 9 V)

IPS-6 Harmonist

Create three-part harmonies, de-tune, and bend with ease!

● Latest DSP delivers high-quality, natural sound ● Three-voice harmony, pitch-shifting, and de-tuning ● Powerful super-bend effect enables amazing multi-octave effects ● Pitch can also be controlled with a Roland EV-5 external pedal (sold separately)



● Current Draw 45 mA (DC 9 V)

IRV-5 Digital Reverb

Pro-Quality Reverb — In Stereo

● The RV-5 Digital Reverb gives you six of BOSS's best reverbs — including spring reverb emulation, gate reverb, and an all-new "Modulate" mode — in a true stereo pedal



● Current Draw 50 mA (DC 9 V)

IFRV-1 Fender® Reverb COSM

Fender® Reverb Pedal
 ● Recreates the legendary sound of the 1963 Fender Reverb via COSM technology ● Easy operation with three classic controls for Dwell, Tone, and Mixer for creating sounds from buttery warmth to sparkling twang ● Road-tough BOSS metal construction



● Controls MIXER, TONE, DWELL
 ● Current 37 mA
 ● Weight 420 g/15 oz (incl. battery)



IWA-3 Dynamic Wah

Unbelievable "Talking" Wah Effects!

● The world's first compact pedal to produce human-voice type wah sounds using a "Humanizer" effect ● EXP Pedal mode allows foot control, plus dedicated Bass input for processing bass guitar



● Current Draw 50 mA (DC 9 V)

IOC-3 SUPER Octave

The Ultimate Octave Pedal
 ● The OC-3 SUPER Octave puts new polyphonic octave effects, a Drive mode with distortion, and the original OC-2 effect in one convenient pedal that's ideal for bass, too



● Current Draw 50 mA (DC 9 V)

ITR-2 Tremolo

Classic Tremolo Sounds!
 ● Reproduces the classic tremolo effects of vintage '60s amps using a Low Frequency Oscillator (LFO) ● LFO waveform is variable from triangle to square for producing a variety of classic tones



● Current Draw 20 mA (DC 9 V)

IRC-3 Loop Station USB

Stereo track looper with up to 3 hours of recording!

● Diverse loop performances with up to 99 phrases and approximately three hours of recording time ● True-stereo input and output. AUX IN accepts audio from MP3 players ● Connect to your PC via USB to import and export phrases



● Current Draw 70 mA (DC 9 V)

for BASS
LMB-3 Bass Limiter Enhancer

Smooth Tone, Every Time

● Smooths out your playing by eliminating harsh volume peaks, even when using dynamic slap and pop techniques ● Ratio and Threshold knobs allow precise control of limiting parameters



● Current Draw 17 mA (DC 9 V)

for BASS
SYB-5 Bass Synthesizer

Synth Power Under Your Foot

● Utilizing the latest in DSP technology, the SYB-5 faithfully reproduces the classic sound characteristics of analog synthesizers ● The 11 internal sounds are supercharged for thick, aggressive tone



● Current Draw 50 mA (DC 9 V)

IBF-3 Flanger

The Flanger Gets a Face-Lift

● The thickest stereo flanging sounds ever in a BOSS pedal ● Ultra mode produces BOSS's deepest flanging sounds ever, while Gate/Pan creates spacious flanging with a cool Slicer effect that seems to "swirl" around the listener



● Current Draw 40 mA (DC 9 V)

IPH-3 Phase Shifter

Modern Phasing with Tap Tempo Sync

● Vintage BOSS phasing effects including 4-, 8-, 10-, and 12-stage phasers, plus new "Rise" and "Fall" effects for unidirectional phasing ● Tap tempo sync or realtime control of rate via an Expression/Pedal input



● Current Draw 50 mA (DC 9 V)

MOP
IMO-2 Multi Overtone

Expressive Compact with Distinctive, All-New Tones

● Impressive, harmonically rich sounds that compliment and enhance your straight guitar sound ● Works well with both clean and distorted guitar tones, and also bass guitar ● Three different sound modes; wide range of tonal adjustment with simple controls



● Current Draw 40 mA (DC 9 V)

INS-2 Noise Suppressor

A "Must-Have" Pedal!

● Eliminate unwanted noise and hum without altering your tone ● A unique noise detection circuit preserves the natural attack and envelope, leaving your playing and dynamics intact



● Current Draw 20 mA (DC 9 V)

LS-2 Line Selector

Simplifies Your Setup

● The easy way to switch settings among several effects or amplifiers, or route input and output signals ● When used with an AC adaptor, the LS-2 can supply power to several BOSS compact pedals



● Current Draw 25 mA (DC 9 V)

ITU-3 Chromatic Tuner

The New World-Standard Tuner Has Arrived

● Smooth 21-segment LED meter with a High-Brightness mode that cuts through the harshest outdoor glare ● Accu-Pitch Sign provides visual verification when tuning is complete



● Current Draw 30 mA (High Brightness mode: 85 mA)

IDD-3 Digital Delay

Pro-Quality Delay in a Compact Pedal

● A powerful delay pedal with three distinct modes ● A variable Delay Time control creates delays from 12.5 ms to 800 ms, while a Hold function is capable of producing repeats from here to infinity



● Current Draw 35mA (DC 9 V)

IDD-7 Digital Delay

The Next Step in Compact Delay

● The DD-7 takes the best features from its predecessors and expands the creative potential with Modulation Delay mode, classic modeled Analog Delay mode, external pedal control options, longer delay time, and more



● Current Draw 55 mA (DC 9 V)

MOP
ITE-2 Tera Echo

Make Your Playing Soar with Majestic Ambience

● Dynamic new stereo ambience effect that goes far beyond traditional delay and reverb ● Dramatically enhances the direct tone, but never overwhelms it ● Freeze function holds the ambient sound for lead backing and sound effects

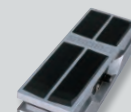


● Current Draw 53 mA (DC 9 V)

VOLUME PEDAL SERIES

FV-500H Foot Volume/Expression

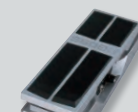
The FV-500H (mono, high-impedance) volume pedal offers a new stylish design, a road-tough build, and a comfortable, smooth action.



● Control MINIMUM VOLUME knob ● Dimensions 110 (W) x 289 (D) x 72 (H) mm (4-3/8" x 11-7/16" x 2-7/8") ● Weight 1.6 kg/3 lbs 9 oz

FV-500L Foot Volume/Expression

The FV-500L (stereo, low-impedance) die-cast volume pedal is built for comfort and durability, ready to meet the needs of the most demanding pros.



● Control MINIMUM VOLUME knob ● Dimensions 110 (W) x 289 (D) x 72 (H) mm (4-3/8" x 11-7/16" x 2-7/8") ● Weight 1.6 kg/3 lbs 9 oz

FV-50H Volume Pedal

The high-impedance FV-50H is designed to be connected before guitar effect units in the signal chain.



● Control MINIMUM VOLUME knob ● Dimensions 86 (W) x 200 (D) x 54 (H) mm (3-3/8" x 7-7/8" x 2-1/8") ● Weight 400 g/15 oz

FV-50L Volume Pedal

The low-impedance FV-50L is designed for connection after effects units or for use with keyboards.



● Control MINIMUM VOLUME knob ● Dimensions 86 (W) x 200 (D) x 54 (H) mm (3-3/8" x 7-7/8" x 2-1/8") ● Weight 400 g/15 oz



Double-barrel power, creativity, and control!

LOOP STATION RC-30 DUAL TRACK LOOPER

Stereo 2-Track Looper with Effects



- Store up to 99 phrases, ultra-long recording time of up to three hours
- Two stereo channels for input and output
- USB 2.0 port allows you to connect to a PC and import/export WAV audio
- Built-in effects for processing loops ● Mic jack* for recording voices and instruments ● AUX IN jack for recording audio from your MP3 player ● Runs on batteries or optional AC power supply *Supports phantom power.

■ Built-In Loop Effect

BEND DOWN	This effect bends the pitch down rapidly.
STEP PHASER	This phaser varies the tone in a step-wise fashion.
SWEEP FILTER	This effect varies the frequency in sync with the tempo.
TEMPO DELAY	Tempo-synced delays.
Lo-Fi	Unique lo-fi effect.



SPACE ECHO RE-20 ROLAND SPACE ECHO RE-201

The Rebirth of a Roland Classic



- Amazing simulation of the famous Roland RE-201, with the spacious, analog tone
- Features include 11 types of echo and reverb effects
- The classic chorus effect produced through tape speed, compression, and saturation are meticulously reproduced
- Tap input pedal allows delay time to be set by foot



SLICER SL-20 AUDIO PATTERN PROCESSOR

Instant Groove and Melody Maker



- Instantly transform a guitar, bass, keyboard, or vocal into a pulsating groove instrument
- 50 slice patterns onboard, with adjustable attack and duration, including Harmonic Slice
- Up to 40-second recording/loop playback function ● Tap Tempo via onboard pedal switch; internal and MIDI sync ● Variety of output modes, including the unique 3D Panning for spacious sliced FX



GIGA DELAY DD-20 DIGITAL DELAY

BOSS' Most Powerful Delay Pedal



- Up to 23 seconds of delay with easy operation
- 11 delay modes including classic tape delay and sound-on-sound recording
- New "Smooth" and "Twist" modes for subtle or radical delay effects ● Memory function for changing delay modes seamlessly
- Push-button knob for setting delay time in fine or coarse adjustments

■ Mode

SOS	DUAL	TWIST	PAN
WARP	SMOOTH	TAPE	MODULATE
ANALOG	REVERSE	STANDARD	



ROTARY ENSEMBLE RT-20 ROTARY SOUND PROCESSOR

Supreme Rotary-Speaker Simulator



- Authentic rotary speaker sounds by COSM technology
- 4 types of sounds, from standard rotary speaker effects to rock-oriented tones and more
- Slow/Fast transition time is adjustable from gradual to rapid change; optional Expression pedal can control speed in real time
- Onboard Overdrive effects ● Dazzling virtual-rotor display



TU-10 CLIP-ON CHROMATIC TUNER

Clip-On Tuner with "True" Color Display



- Proven BOSS quality and reliability in a clip-on format
- Dramatic advancement of visibility with multi-color LCD
- Flat tuning up to 5 semitones
- Accu-Pitch function, and Stream mode
- Accu-Pitch Sign function provides visual verification when tuning is complete ● Two meter-display modes: Cent (needle-style movement) and Stream (flow of lights indicates pitch deviation) ● Stylish design and robust body ● Five color variations available



TU-3 CHROMATIC TUNER

The World-Standard Pedal Tuner



- 21-segment LED meter with brightness control
- High-Brightness mode enhances meter visibility outdoors
- Flat tuning up to six semitones below standard pitch
- Accu-Pitch Sign function provides visual verification when tuning is complete
- Chromatic and Guitar/Bass mode (with support for 7-string guitars and 6-string basses) ● Two meter-display modes: Cent and Stream ● Signal is automatically muted when the tuner is on ● Supplies power for up to 7 BOSS compact effect pedals

TU-12EX CHROMATIC TUNER

Famous TU-12 Features with Exciting Enhancements



- 23.9 mm thick body for easy storage in guitar cases
- Flat Tuning of up to six half-steps down
- Accu-Pitch verification with an audible beep
- Oversized needle indicator for superb visibility plus LED tuning guide ● Extended tuning range of E0-C8 for a variety of instruments ● High-sensitivity built-in mic provides accurate and stable tuning for acoustic instruments ● Auto power off prolongs battery life

TU-88 MICOR MONITOR & TUNER

Triple-Function Tuner for Guitar and Bass



- Three tuning modes; Chromatic, Guitar and Bass
- Built-in headphone amp lets you tune, warm up, and check your effects in private
- Built-in metronome with selectable rhythmic patterns and volume control
- Chromatic and Guitar/Bass mode (with support for 7-string guitars and 6-string basses)
- Flat Tuning function, and Accu-Pitch verification with an audible beep ● MIX IN allows jamming with an external audio player ● Available in black or white

TU-12BW CHROMATIC TUNER

Designed Exclusively for Brass and Wind Instruments



- Reference Pitch allows for long-tone practice
- Quick Response mode offers faster needle response
- Includes clip-on contact mic and music-stand attachment bracket
- Needle-accurate metering
- Accu-Pitch provides audible verification of tuning



● Holder attached to music stand



● Clip-on contact mic attaches to the bell of the instrument

TU-80 TUNER & METRONOME

The Pocket-Sized TU-80 Provides Tuning + Metronome



- Smooth, high-resolution needle-style LCD meter
- Supports chromatic tuning, plus 7-string guitars and 6-string basses
- Metronome features eight rhythm styles
- Chromatic and Guitar/Bass mode (with support for 7-string guitars and 6-string basses)
- Accu-Pitch function sounds a tone when tuning is complete ● Flat tuning of up to 5-steps below
- Available in black or white

The world-standard family of tuners ...
BOSS TU
Stay Tuned.

New creativity for vocalists!

Vocal Harmonist VE-2



Enrich Your Vocals with Beautiful Harmonies— Just Plug in Your Guitar and Sing!



- Auto Harmony function automatically detects chords played on a connected guitar and generates perfectly matching harmonies, even during mid-song key changes
- Solo singers can create harmonies by manually setting the song key with a dedicated panel knob
- High-quality reverb/delay and an enhancer with real-time pitch correction
- Runs on four AA-size batteries or optional PSA-series AC adaptor

- 24 harmony types to choose from (12 one- and two-voice harmonies plus variations that provide even fuller sounds)
- Hybrid mode creates harmonies based on both guitar chord input and the manual key setting, perfect for songs where the guitar part transitions between rhythm and lead playing
- Friendly user interface that's simple to use, even for vocalists not familiar with using effects
- Runs on four AA-size batteries or optional PSA-series AC adapter
- XLR mic input with phantom power (phantom power is available even when running on batteries)
- USB audio function for capturing processed vocal sounds into your computer

■ Harmony type List

UNISON	OCT UP	OCT UP&DOWN	OCT DOWN
HIGH	HIGH & HIGHER	LOWER & HIGHER	LOWER
HIGHER	LOW & HIGH	LOW & LOWER	LOW



Vocal Performer VE-20



The Essential Stompbox for Vocalists



- Specialized effects for vocalists, including Double-Track, Dynamics, and more
- Create 3-part harmonies and layers
- Special FX, including distortion, radio and strobe
- Phrase Looper with 38 seconds of recording time
- Runs on six AA-batteries or optional AC adaptor



■ Preset Sound List

No.	Sound Name	Features
01	HARD ROCK	A powerful preset suited for hard rock
02	POP	Great for pop songs with clear vocal distinction
03	BALLAD	Ideal for ballads with rich resonance
04	OLDIES	Suited for oldies from the '50s
05	ROCK	Direct and full sound tailored for rock
06	JAZZ	Create an intimate sound as if you're singing in a jazz club
07	ECHO	An echo effect that makes great use of short delays
08	ARENA	The sound of singing in a spacious arena
09	CATHEDRAL	The grand, stately reverberation you'd get in a cathedral
10	HIP HOP	A great hip-hop sound with a touch of distortion
11	VOICE PERC	A crisp sound that's great for voice percussion
12	HARMONICA	Pleasant distortion for blues and rock harmonica
13	DOUBLE VOICE	Stack your vocals with this realistic double-track effect
14	TRIPLE VOICE	Add another voice to create a 3-part harmony
15	6 VOICE	Combination of double-track and delay creates a 6-part sound
16	5th HARMONY	Harmony in 5ths suited for a broad range of songs
17	3rd HARMONY	Beautiful harmonies in 3rds
18	5th + DOUBLE	Harmony in 5ths + double-track effect
19	3rd + DOUBLE	Harmony in 3rds + double-track effect
20	3rd + 5th LOW	Harmony in 3rds and 5ths (two lower parts)
21	3rd + 5th	Harmony in 3rds and 5ths (lower part and higher part)
22	3rd + 5th HIGH	Harmony in 3rds and 5ths (two higher parts)
23	DISTORTION	Wild distortion effects
24	RADIO	Retro-sounding radio voice
25	STROBE	Great for rhythmic phrases such as in rap
26	CHORUS	Chorus effects add a pleasant thickness to your sound
27	FLANGER	With its unique undulating effect, this was designed specifically for vocals
28	PitchCorrect	Natural pitch correction in half-tone increments
29	CHROMATIC	Pitch-corrected sound that's a staple of modern pop
30	ROBOT	Robotic voice, a techno staple

VE-5



Attach a VE-5 to your mic stand, and operate the unit from an easily reachable distance while you perform.



VE-5-WH



VE-5-RD



The VE-5 can be attached to a mic stand.

- High-quality effects for vocalists, easy to operate
- Perfect for live performances
- Attach to your mic stand for convenient control onstage
- Available in two color variations: white or red

- A variety of high-quality effects are onboard, including reverb, delay, dynamics, pitch correct, distortion, radio, and strobe for unique and impactful special effects
- 30 preset effects are easily accessible with a simple turn of a knob
- The handy Favorite Sound function lets you instantly access your preferred sounds with a press of button
- Phrase looper enables sound-on-sound solo performance with hands-free control via optional footswitch
- In addition to the balanced XLR/TRS microphone jack, a built-in microphone is provided as well
- Take it onstage and attach it to a microphone stand for real-time performance, or bring it to a studio or home and use it as a tabletop processor
- Battery operation makes it an ideal tool for street performers who want to bring a new dimension of creativity to their act

■ Preset Sound List

No.	Sound Name	Features
01	BRIGHT ECHO	Pleasant echo
02	DEEP ECHO	Deep echo
03	ARENA	Simulates an enormous arena
04	CATHEDRAL	Deep and rich reverb
05	ENSEMBLE	Spacious ensemble sound
06	POP	For vocal definition
07	BALLAD	Ballad tone with reverb
08	ROCK	Rock sound also suitable for simple backing
09	JAZZ	Jazz club setting
10	HIP HOP	Processed vocal, lightly distorted
11	HARMONICA	Setting for harmonica; simulates amp distortion
12	SAXOPHONE	Setting for sax, with crisp reverb
13	5th HARMONY	Parallel-fifth harmony, suitable for many styles
14	3rd HARMONY	Parallel-third harmony, emphasizing the feel of the song
15	DOUBLE VOICE	Double-tracking effect simulates two voices
16	FOUR VOICE	Double-tracking effect and delay simulate four voices
17	UNISON	Unison sound that adds depth to your vocal
18	PitchCorrect	Natural-sounding pitch correction in semitone steps
19	CHROMATIC	Chromatic voice sound, pitch-corrected in stepwise fashion
20	ROBOT	Cyber-robot voice
21	ElectricTune	Stepwise pitch correction in large steps
22	DISTORTION	Vocal distortion
23	RADIO	Radio-voice sound ideal for instantly changing the atmosphere
24	STROBE	Rhythmic Rap setting
25	CHORUS	Chorus effect for vocal depth
26	FLANGER	Flanger effect that adds a sense of modulation
27	HEAVY SCREAM	Hardcore vocal
28	SPACE LOUNGE	Outer space announcer
29	OPERA QUEEN	Lustrous high voice
30	REFRAIN	Distinctive echoed voice

AD SERIES

AD-8



Models Six of the World's Finest Acoustics!



- Floor-based acoustic guitar processor featuring COSM Acoustic Modeling technology
- Turns ordinary piezo-equipped guitars into six of the world's finest acoustics
- Body and String Enhance controls simulate warm, miked acoustic sounds
- Sculpt your tone with high-quality reverb and 4-band EQ
- Auto Anti-Feedback function eliminates feedback instantly
- 4 preset memory locations for switching acoustic sounds instantly
- Balanced XLR outputs allow direct connection to PA systems
- Battery or AC powered, chromatic tuner onboard



AD-3



Floor-Based Acoustic Processing



- Compact acoustic instrument processing pedal developed exclusively for gigging acoustic-electric guitarists
- Bi-Stereo Chorus offers split-frequency processing (Low and High) for natural, smooth chorus effect
- "Bottom" and "Top" controls offer variable tonal shaping to eliminate "dry" sound from piezo pickups and add rich, resonant lows and brilliant highs as desired
- Stereo balanced outputs allow for direct connection to PA
- Dual Anti-Feedback function can be manually set to eliminate feedback
- Battery or AC powered, chromatic tuner onboard

Accelerate your creativity with a BOSS Loop Station!



LOOP STATION RC-505 LOOP STATION

USB AUDIO ASIO

Tabletop Loop Station that can be operated with the hands, perfect for beatboxers, vocalists, and club performers



Types available for both Input FX and Track FX

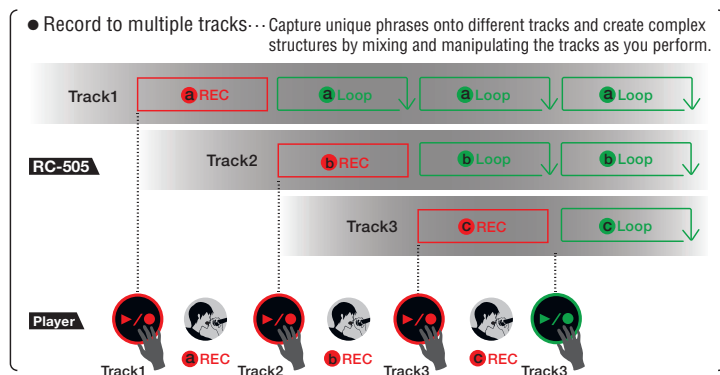
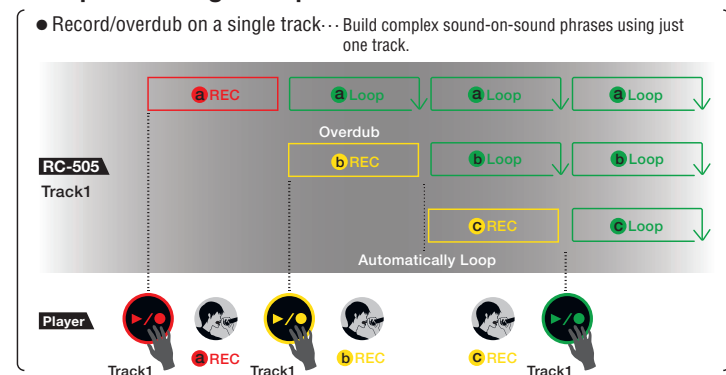
FILTER	ROBOT	PAN
PHASER	VOCAL DIST	SLICER
FLANGER	VOCODER	DELAY
SYNTH	DYNAMICS	TAPE ECHO
LO-FI	EQ	GRANULAR DELAY
GUITAR TO BASS	ISOLATOR	CHORUS
TRANSPOSE	OCTAVE	REVERB

Types available only for Track FX

BEAT REPEAT	BEAT SHIFT	BEAT SCATTER	VINYL FLICK
-------------	------------	--------------	-------------

- Five simultaneous stereo phrase tracks, with dedicated controls and independent volume faders
- Wide range of Input FX and Track FX for processing loops, including DJ and sampler-style effects
- Independent play mode and tempo sync settings enable a flexible combination of track behaviors and advanced performance options
- 99 phrase memories, each containing five phrase tracks, custom effects/playback settings, and more
- The innovative loop indicator shows you a track's status, loop position, and playback level for instant visual confirmation
- 85 onboard rhythm patterns, including odd-measure beats
- External control via MIDI and optional footswitches or expression pedal
- USB for phrase import/export with computers; USB audio/MIDI functionality for integration with DAW software
- XLR mic input with phantom power, mono/stereo instrument inputs, and stereo AUX input

Loop Recording Examples



LOOP STATION RC-300 LOOP STATION

USB AUDIO

The Triple-Stereo Mega Looper



Built-in Loop Effects

TRANSPOSE	Transposes the sound when you turn the effect on.
FLANGER	Produces a metallic resonance reminiscent of a jet airplane taking off and landing.
PHASER	Gives the sound a swishing quality by adding a phase-shifted sound.
PAN	Moves the stereo position (pan).
TREMOLO	Cyclically modulates the volume.
SLICER	Repeatably cuts the sound, transforming a conventional sound to create the impression of a rhythmic backing.
BEND	Produces pitch-up/pitch-down effects that can't be created using a guitar's tremolo arm.
CHORUS	Adds a slightly modulated sound to the direct sound, creating beautiful spaciousness and depth.
ROBOT	Adds robot-like qualities to the voice.
FEMALE	Makes the voice more feminine.
MALE	Makes the voice more masculine.
GT-BASS	Transforms a guitar sound into a bass sound.
FILTER	A filter with an extremely steep slope (a steep cutoff).
DELAY	Adds a delayed sound to the direct sound, giving the sound greater depth or creating special effects.
LO-FI	This effect intentionally degrades the sound to create a distinctive character.
DISTORTION	Distorts the sound to produce long sustain.

- Up to three hours of stereo recording and 99 onboard memories
- Three stereo tracks with dedicated footswitches and controls for each
- Dedicated fader per track
- 16 onboard effects optimized for looping
- Expression pedal for effects control in real time
- XLR microphone input with phantom power
- AUX IN jack for recording audio from your MP3 player
- USB storage; import/export WAV files



LOOP STATION RC-30 DUAL TRACK LOOPER

USB BATTERY POWERED

Stereo 2-Track Looper with Effects and Support for Battery Power



Built-In Loop Effect

BEND DOWN	This effect bends the pitch down rapidly.
STEP PHASER	This phaser varies the tone in a step-wise fashion.
SWEEP FILTER	This effect varies the frequency in sync with the tempo.
TEMPO DELAY	Tempo-synced delays.
Lo-Fi	Unique lo-fi effect.

- Up to three hours of stereo recording time and 99 onboard memory phrases
- Two synchronized stereo tracks with true stereo I/O
- USB port allows you to connect to a PC and import/export WAV audio
- Built-in effects for processing loops
- MIC IN jack for recording voices and instruments
- AUX IN jack for recording audio from your MP3 player
- Runs on batteries or optional AC power supply



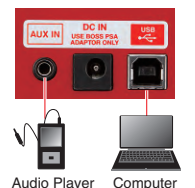
Loop Station RC-3 LOOP STATION

USB BATTERY POWERED

State-of-the-Art Looper in a Compact Body



- Compact and powerful stereo stompbox looper
- Up to three hours of stereo recording time and 99 onboard memory phrases
- USB port allows you to connect to a PC and import/export WAV audio
- AUX IN jack for recording audio from your MP3 player
- Rhythm guide with real drums
- Runs on a single 9-volt battery or optional AC power supply



Powered by BOSS's latest technology, the GT series deliver mind bending power and performance.

GT-100 Ver.2

COSM AMP EFFECTS PROCESSOR TONE CENTRAL COSM USB AUDIO ASIO

Version 2.0: Full Power for Stage and Studio



- Advanced COSM amps that model vintage classics and deliver never-before-heard tones
- Two new amp models: BGNR UB Metal and ORNG Rock Reverb
- New MDP effects powered by innovative BOSS technology: Tera Echo, Overtone, and A-DIST
- BOSS TONE STUDIO editor/librarian for Mac/Windows and custom patches available at bosstonecentral.com
- Advanced Amps excel in not only cloning classic amps, they also provide a new world of unimagined tone by delivering ultra-natural sounds considered to be physically impossible with existing amps
- Vintage Amp mode reproduces 19 different types of masterpiece amps
- A/B Channel Divider for creating dual amp and effects chains that can be blended together or toggled by footswitch, frequency, or picking strength
- Monophonic guitar-to-MIDI conversion from normal 1/4-inch guitar input
- Enhanced USB audio/MIDI interface with multi-channel operation for flexible recording and efficient re-amping
- Equipped with Phrase Loop function
- Polyphonic tuner function

■ DUAL LCD

● With its dual LCD display, the GT-100 puts you in direct contact with the editing functions you need without having to switch screens. You can control the parameters on the right-side screen while viewing the audio routings on the left screen. The large LCD offers excellent visibility even on a dark stage.

■ EZ TONE

● The EZ Tone function makes complex editing fast and easy. Patch Create mode lets you design sounds based on musical genres and song concept. Amp Customize and OD/DS Customize let you tweak the characteristics of your amp and overdrive/distortion to your preference.

■ ACCEL PEDAL

● Step on the new Accel pedal and modulate your sound dynamically in real time. The pedal enables real-time control of multiple parameters simultaneously, as well as time-variant effects such as Feedbacker, S-Bend, Twist, etc.; Laser Beam and Warp add extreme effects that resemble synth tones.

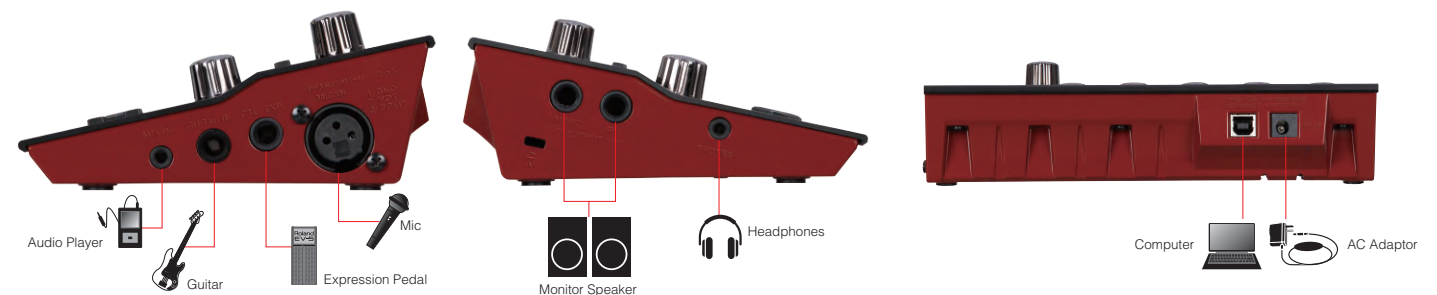
GT-001

GUITAR EFFECTS PROCESSOR TONE CENTRAL COSM ASIO USB AUDIO

Flagship GT Power on Your Desktop

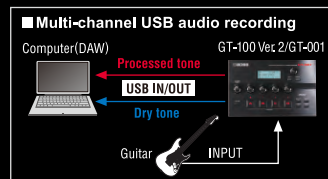


- Pro-level sound for recording and jamming
- BOSS' top-of-the-line COSM amps and effects equivalent to the GT-100 Version 2
- Advanced multi-channel USB audio/MIDI interface for flexible recording and efficient re-amping
- BOSS TONE STUDIO editor/librarian for Mac/Windows and custom patches available at bosstonecentral.com
- Panel knobs for adjusting sounds and dedicated buttons for calling up favorite tones
- Newest MDP effects powered by innovative BOSS technology: Tera Echo, Overtone, and A-DIST
- XLR mic input with phantom power; specially designed effects patches for vocals and acoustic guitars
- 1/8-inch input for connecting a stereo device such as a smart phone or music player
- Monophonic guitar-to-MIDI conversion from normal 1/4-inch guitar input
- Jack for connecting an expression pedal or up to two footswitches for real-time effects control and patch changes
- Powered by USB bus or included AC adaptor



A Powerful Tool for DAW Music Production

Via a single USB cable, the GT-100 Ver.2/GT-001 functions as a high-quality audio interface for your Mac or Windows computer. It's easy to capture great amp and effects tones directly into your DAW, and four audio channels provide lots of flexibility for recording, re-amping, and mixing. For example, you can listen to the GT's amps and effects while capturing an unprocessed signal in your DAW, simultaneously record processed and dry tones on separate tracks, and listen to your mix while re-amping and adjusting guitar tones through GT-100 Ver.2/GT-001.



TONE CENTRAL
bosstonecentral.com

■ PREAMP

ADVANCED	VINTAGE	CUSTOM
NATURAL CLEAN	JC-120	MS 1959 I
FULL RANGE	CLEAN TWIN	MS 1959 I-B
COMBO CRUNCH	PRO CRUNCH	R-FIER VINTAGE
STACK CRUNCH	TWEED	R-FIER MODERN
HIGAIN STACK	DELUX CRUNCH	T-AMP LEAD
POWER DRIVE	VO DRIVE	SLDN
EXTREM LEAD	VO LEAD	5150 DRIVE
CORE METAL	MATCH DRIVE	BGNR UB Metal
	BG LEAD	ORNG Rock Reverb
	BG DRIVE	

■ Effect List

EFFECT	OD/DS	CUSTOM	FX1/FX2
COMP	ADVANCED		T. WAH
OD/DS	MID BOOST	BLUES OD	AUTO WAH
PREAMP	CLEAN BOOST	OD-1	WAVE SYNTH
EQ	TREBLE BST	T-SCREAM	ROTARY 1
FX1	CRUNCH	TURBO OD	ROTARY 2
FX2	NATURAL OD	DIST	SUB WAH
DELAY	WARM OD	RAT	SITAR SIM.
CHORUS	FAT DS	GUV DS	UNI-V
REVERB	LEAD DS	DST+	ADV. COMP
	METAL DS	METAL ZONE	OCTAVE
	OCT FUZZ	'60S FUZZ	LIMITER
	A-DIST	MUFF FUZZ	PITCH SHIFTER
			SLICER
			SUB OD/DS
			HARMONIST
			VIBRATO
			GRAPHIC EQ
			OVERTONE*
			RING MOD.
			PARA EQ
			SOUND HOLD
			HUMANIZER
			TONE MODIFY
			AC. PROCESSOR
			2X2 CHORUS
			GUITAR SIM.
			PHASER
			SUB DELAY
			AC. GUITAR SIM
			FLANGER
			TERA ECHO*
			SLOW GEAR
			TREMOLO

*FX-2 only



ME-80

GUITAR MULTIPLE EFFECTS

TONE CENTRAL COSM ASIO USB AUDIO BATTERY POWERED

The Top Choice for Live Performance



- Compact and powerful floor multi-effects with a simple knob-based interface
- Includes a massive selection of top-quality effects, from classic BOSS stompboxes to the latest MDP effects
- Updated flagship-level COSM amps derived from the GT-100
- Free BOSS TONE STUDIO software allows you to edit and organize tones on your computer, and also preview and download free patches directly from the BOSS TONE CENTRAL website
- Eight simultaneous effects categories, each with multiple effects types
- Dial up tones with the ease of using your favorite stompboxes
- Eight multifunction footswitches and expression pedal
- Manual mode for stompbox-style on/off; Memory mode for switching complete patch setups
- Phrase Loop function with 38 seconds of recording
- Runs on six AA batteries or optional PSA-series AC adaptor
- USB audio/MIDI interface built in
- Free BOSS TONE STUDIO software allows you to edit and organize tones on your computer, and also preview and download free patches directly from the BOSS TONE CENTRAL website



ME-25

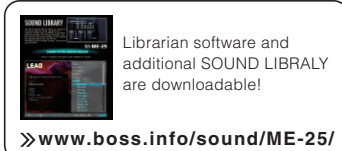
GUITAR MULTIPLE EFFECTS

COSM ASIO USB AUDIO BATTERY POWERED

Powerhouse FX with Stompbox Simplicity



- SOUND LIBRARY provides extensive collection of ready-to-use tones
- Powerful COSM amp models onboard, from classic to contemporary
- SUPER STACK adds immensely heavy low-end and punch
- Phrase Loop function with 38 seconds of recording time
- Functions as a USB audio interface, Cakewalk SONAR LE software available for free
- Select a performance category and a variation; simple steps let you find the perfect sound quickly
- Six categories with 10 variations each for a total of 60 powerful sounds
- Runs on six AA batteries or optional AC adaptor



GT-10B

BASS MULTIPLE EFFECTS

COSM ASIO USB AUDIO

Top-of-the-Line Bass Station



- Optimized for bass, with essential effects such as OD/DS, Comp/Limiter
- COSM bass amps provides top-quality sounds without sacrificing richness and bottom of the bass tone
- EZ Tone enables intuitive tone creation by using an interactive user interface based on graphic icons
- Phrase Loop allows instant sound-on-sound loop creation

- Parallel Chain offers two separate effects paths that can be blended, switched by playing dynamics, or with the onboard pedals
- USB capability offers audio- and MIDI-streaming in real time
- Comes equipped with XLR outputs as well as 1/4-inch jacks



ME-50B

BASS MULTIPLE EFFECTS

COSM BATTERY POWERED

Floor-Based Bass Multi-Effects Processor with Easy Control



- Powerful COSM Compressor/Limiter and EQ
- Get creative with Filter/Tone and Drive/Synth features
- High-quality Delay/Modulation and powerful Pedal FX

- Innovative Sound Hold function for sustaining a low note while playing on top
- Sound On Sound recording with new Kick Drum effect for keeping time
- Dedicated knobs for each effect section—no menu-surfing!
- Easy Tone effects with Preset EQ templates for quick tone editing



ME-20B

BASS MULTIPLE EFFECTS

BATTERY POWERED

Performance-Based Effects for Bass



- A wide variety of effects for bass, including compressor, distortion, T-Wah, chorus, delay, defretter, synth, and more
- EZ EDIT lets you create sounds quickly and intuitively
- BASS ENHANCE function for instant presence boost

- Easy-to-use interface with BOSS tone and quality
- Unique effects such as Synth, Octave, Defretter, and more
- 30 user memory locations
- AUX IN allows jamming with an audio player
- Battery or AC powered
- Built-in tuner



Unlimited Sonic Possibilities

Your Web Home for Free Patches, Instructional Vids, Artist Tips, and More



GP-10 GUITAR PROCESSOR

GP-10GK: Includes a GK-3 divided pickup and GK cable
 GP-10S: Comes with the GP-10 only.
 *Requires GK-3 divided pickup and GK cable if you want to use all the features of the GP-10.



A universe of amazing tones and tunings at your command, all in one compact processor that's affordable and easy to use



- Instrument modeling powered by COSM technology, including conventional electric, acoustic, and bass guitars, plus sitar, banjo, fretless guitar, and others
- Instant access to down tunings, open tunings, 12-string sounds, and your own custom tunings
- Analog guitar synthesizer modeling driven by real-time DSP allows you to play expressive, ultra-responsive synth tones
- High-quality COSM amps and multi-effects derived from the GT-100
- 13-pin input for guitars equipped with a Roland GK-3 Divided Pickup or other GK-compatible pickup
- Standard 1/4-inch guitar input allows for use of amps and effects with any guitar
- USB audio/MIDI interface for multi-channel audio recording (including individual string output) and guitar-to-MIDI conversion with GK pickup
- BOSS TONE STUDIO editor/librarian for Mac/Windows and custom patches available at bosstonecentral.com

A World-Class Collection of Classic Guitars, Synths, and More

With a Roland GK-compatible pickup on your guitar, the GP-10 lets you transform your sound into numerous classic electric and acoustic guitar types, basses, sitar, and even analog-modeled synths, including the legendary Roland GR-300. In addition, "Poly FX" deliver unique sounds allowing you to take your playing into exciting new territory.



Instantly Change Your Guitar's Tuning

Using a GK-compatible pickup, the GP-10 allows you to change your guitar's tuning with the press of a pedal. There's no need to change instruments or manually re-tune for different songs or styles—just dial up the tuning you need in the GP-10 and go. Play slide in open tunings like G and E, enjoy shimmering 12-string tones, or drop your entire guitar down in semitone steps for massive, ultra-heavy riffs. There are many tuning presets to choose from, and you can also create your own customized tunings for any application.



Natural, Ultra-Responsive COSM Amps and Multi-Effects

The versatile GP-10 also functions as a full-featured multi-effects processor for both GK and normal pickups, giving you a huge selection of COSM amps and effects for live playing and studio recording.



USB Audio/MIDI Interface Built In

With a GK-equipped guitar, you can record the audio output of each of your guitar's strings on separate tracks, either processed with the GP-10 or captured dry for later processing. When you record unprocessed sounds in this way, you have the ability to not only re-amp the tracks through the GP-10's amps, but to "re-guitar" as well, using the GP-10's instrument modeling to change the sound to anything you want after the fact. The guitar-to-MIDI function allows you to stretch your creativity even further, using your guitar to play soft synths, capture MIDI sequences, and input MIDI data into notation software on your computer.



GK-3 Divided Pickup



A slim, divided pickup for sending individual signals from each guitar string to GK compatible devices.



You can attach the GK pickup to the end pins of your favorite guitar.



BOSS TONE CENTRAL is the ultimate destination for all players that use BOSS products. Evolving to include a growing selection of BOSS gear, this newly launched site gives you access to lots of premium content, including demo videos and free patches created by top pros such as Steve Lukather, Gus G, Marty Friedman and more. Check back often for new patches, how-to videos, artist interviews, and much more. If you love BOSS effects, BOSS TONE CENTRAL is the place to be!



▶▶▶ bosstonecentral.com



BOSS TONE STUDIO

BOSS TONE STUDIO incorporates three convenient functions; 'Automatic Downloading of Additional Tones (Live Sets)', 'Tone Edit Functions', and 'Tone Library Functions'. These functions are easily available by downloading and installing the application on your PC/Mac.





Jam with your favorite songs and rock like a pro! Feel the power of COSM FX and full-range 2.1 sound!



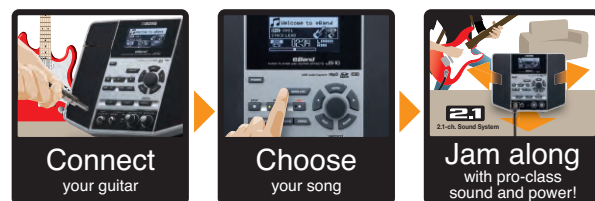
For first-timers and pros alike — easily create pro-quality music.

eBand JS-10 AUDIO PLAYER with GUITAR EFFECTS



eBand, the popular audio player for guitarists, is more powerful than ever!

- Plug in and jam ... it's that easy
- eBand can store and play back up to 4,000 WAV or MP3 files
- The included SD card is loaded with backing tracks — over 350 songs
- Equipped with authentic GT-100-class COSM amp and BOSS effects
- Two inputs allow dual-musician jams
- 2.1-channel sound system with subwoofer delivers powerful sound



Plug in and start jamming right on the spot. Experience live-performance power with dynamic 2.1-channel sound!
Jam along with hundreds of onboard songs. eBand JS-10 is self contained and small but fills the room with full-range sound from its 2.1 sound system and pro BOSS effects. Rock your living room or bedroom as if you're on a concert stage.



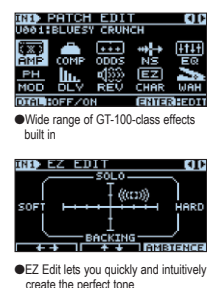
●eBand's internal subwoofer delivers powerful, dynamic sound

Capable of storing up to 4,000 of your favorite songs.
The eBand Song List Editor application lets you import songs from your CDs or audio files via your PC. Store up to 4,000* of your favorite songs and jam along with your own custom library.

*eBand Supports SDHC memory cards up to 32GB.
Supported operating systems: ●Windows® XP SP3 or later / Vista® SP2 or later / 7 ●Mac OS X v10.4.3 or later / v10.5 / v10.6 / v10.7

Over 350 high-quality backing tracks included.
eBand is pre-stocked with over 350 backing tracks optimally suited for guitar playing, from simple 3-chord songs to full arrangements. A wide range of genres is onboard — from rock and blues to jazz, Latin, country, and more. Also included are variations for bass, as well as for bass + guitar jams.

Pro BOSS effects built in.
Get creative with the awesome BOSS effects built into eBand JS-10 (equivalent in quality to the flagship GT-100), including a coveted collection of COSM guitar amps. You can easily customize the amps and effects to create your own unique sounds. Design your sounds in detail, or skip menus of setup options and jump to the EZ Edit mode. In the EZ Edit mode, just choose a music genre and a preset tone, and then steer the pointer on the matrix table until you find the right sound. Each song can store its own effect settings, so all you have to do is select the song and play.



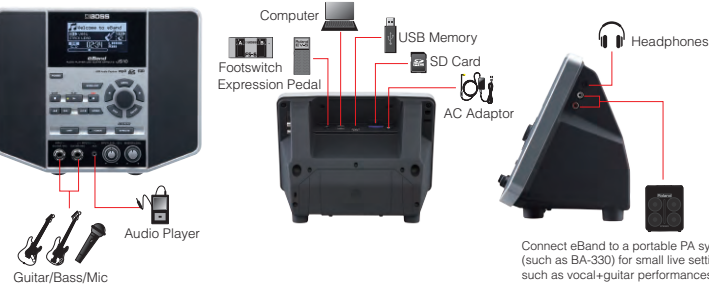
●Wide range of GT-100-class effects built in
●EZ Edit lets you quickly and intuitively create the perfect tone

Dual input channels let two musicians jam together.
Enjoy jams with your family and friends in combinations such as twin guitar, guitar + bass, or guitar + vocal. Since eBand lets you assign individual effects to each input, you can dial up custom sounds for each musician.



Recording your performance is a snap.
To capture your jams digitally, simply press the REC button anytime you wish. The Preview function lets you check your recording without actually saving it as a file. This is a handy feature when you want to re-record your takes multiple times. eBand also has features to assist you in practicing, such as Center Cancel for "minus-one" style play along, an AB repeat function for looping a particular part of a song, a speed variation feature for changing the tempo without changing the pitch, and pitch variation feature for changing key signature without changing tempo.

USB and AUX IN jacks expand creativity.
In addition to its many cool play-along features, eBand can also be used as a USB audio interface. This means you can record your eBand jams into your favorite computer DAW program. Conversely, you can mix the playback from your computer with your live performance and record it into eBand. You can also use eBand as a real-time USB streaming mixer, and as a player of audio files* stored on USB memory. eBand's AUX IN jack allows easy connection to an external audio player.



Connect eBand to a portable PA system (such as BA-330) for small live settings such as vocal+guitar performances

MICRO BR BR-80 DIGITAL RECORDER



The ultimate new portable recording and jam-along tool for guitarists



- Three modes: MTR (multi-track recorder), eBand, and Live Rec
- 64 V-Tracks and eight simultaneous playback tracks
- eBand function for phrase training and play-along tracks
- World-class COSM amps and effects onboard
- USB audio interface onboard
- Cakewalk SONAR LE available for free



Jamming [eBand mode] eBand mode for phrase training and play-along sessions

Record [LIVE REC mode] Record your band performances or ideas

Compose [MTR mode] Create fully produced songs



Mixer screen
Check all settings for a single track with simple scrolling.

BR-800 DIGITAL RECORDER



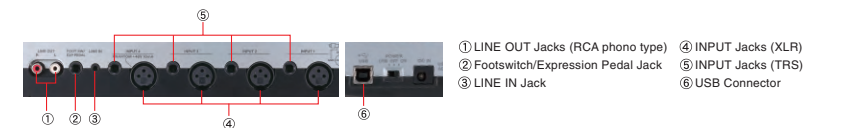
For Guitarists, for Vocalists, the Hands-on Music-Production Solution



- 4-track simultaneous recording, 8-track simultaneous playback plus dedicated rhythm track
- EZ Recording interactively guides through the recording process
- Powerful guitar, bass, and vocal effects derived from BOSS's flagship processors
- Song Sketch recording for quick stereo capture in WAV format
- Built-in advanced drum machine with editor software
- Loop Recording function — a convenient tool for songwriting
- Functions as a USB audio interface and DAW control surface
- Cakewalk SONAR LE software available for free
- Built-in stereo condenser microphone
- Runs on six AA batteries/USB bus power/AC adaptor (included)

AMP	BOSS CLEAN	DELUX CRNCH	VO CLEAN	MS1959 I	T-AMP LEAD	BOSS METAL	CONCERT 810
JC-120	BOSS CRNCH	MATCH DRIVE	MS1959 I+II	T-AMP CRNCH	5150 DRIVE	BASS 360	
JAZZ COMBO	BLUES	FAT MATCH	MS HIGAIN	T-AMP CLEAN	METAL LEAD	T.E.	
FULL RANGE	WILD CRNCH	MATCH LEAD	MS SCOOP	BOSS DRIVE	EDGE LEAD	SESSION	
CLEAN TWIN	STACK CRNCH	BG LEAD	R-FIER VNT	SLDN	SUPER FLAT	AC BASS	
PRO CRNCH	VO DRIVE	BG DRIVE	R-FIER MDN	LEAD STACK	FLIP TOP		
TWEEED	VO LEAD	BG RHYTHM	R-FIER CLN	HEAVY LEAD	B MAN		

VOCAL	SOFT	HARD	ELECTRIC	ROBOT	TONE/SFX	DISTORTION RADIO	DOUBLE/HARMONY	DOUBLE -10CT~+10CT	LO-FI	RADIO VINYL	DIGITAL
DYNAMICS						STROBE	LOW CUT				



① LINE OUT Jacks (RCA phono type) ② FOOTSWITCH/EXPRESSION PEDAL JACK ③ LINE IN Jack ④ INPUT Jacks (XLR) ⑤ INPUT Jacks (TRS) ⑥ USB Connector



Essential Session & Practice Partners

BOSS's famous Dr. Beat and Dr. Rhythm series — whether your needs are for simple, play-along timekeeping or full-blown rhythm programming, the world's best tools are right here.

DR-880 Dr. Rhythm COSM TSC USB

World's Best Rhythm Machine



- 440 world-class drum and percussion sounds, 40 bass sounds
- EZ Compose allows complex patterns to be constructed without note-by-note programming
- Guitar/bass input, plus multi-effects and COSM amp models
- Three independent insert effects (EQ and compression), TSC featuring dynamics and high-quality ambience
- 1,000 patterns (500 preset, 500 user); easily add fills, ghost notes, chord progressions, and more
- Digital and individual outputs; USB port for importing SMFs

DR-3 Dr. Rhythm TSC BATTERY POWERED

Your Own Personal Drummer



- BOSS' most affordable drum machine for jamming or practice
- Realistic drum, percussion and bass sounds with velocity-sensitive pads
- Rhythm Progressions with 3 variations each for Intro, Verse, Fill and Ending
- TSC with Sound Shape function and Ambience for professional drum sounds
- 100 preset styles and 100 user styles programmable via realtime or step recording
- TSC with Sound Shape function and Ambience for professional drum sounds
- Footswitch input for easy live control; runs on battery power or optional AC adaptor

IDB-90 Metronome Dr. Beat BATTERY POWERED IDB-60 Metronome Dr. Beat BATTERY POWERED IDB-30 Metronome Dr. Beat BATTERY POWERED

The Versatile and Professional Dr. Beat



- Quick rhythm customizing with Note Mixing function
- Rhythm Coach features four training modes to help build your accuracy, speed, and endurance
- 4 metronome (including human voice) sounds
- Practice with the Rhythm Coach by connecting a Roland V-Pad (optional)
- Direct connection with guitar and bass, plus headphone monitoring

More Than Just a Metronome



- Note-Mixing function lets you create new rhythms quick and easy
- A variety of rhythm patterns such as 8-beat grooves, waltz, bossanova, and more
- Tap Tempo, Timer, and Stopwatch functions
- Standard Pitch function for tuning instruments

The Take-Along Timekeeper



- Portable, ruggedly built, and packed with fun play-along patterns
- 24 beat variations with complex beats, and 9 rhythm patterns including "CLAVE"
- Large LCD with smooth tempo meter
- Tap-tempo feature
- 12 internal chromatic reference tones
- Convenient Phones jack and Auto Power-Off function

BCB-60 Pedal Board



*Compact pedals and tuner are not included.

- Lightweight and tough pedal board for transporting a range of compact pedals and effects
- Padded interior can be customized to fit anything from a compact pedal to Twin Pedal
- Onboard AC adaptor for powering up to 7 devices; includes all cabling
- Power Supply DC 9 V; AC Adaptor
- Dimensions 670 (W) x 370 (D) x 100 (H) mm (26-7/16" x 14-5/8" x 3-15/16")
- Weight 3.8 kg/8 lbs 7 oz
- Accessory AC Adaptor, Pre-cut Insert x 3, Spare Insert x 1, 8-pin Parallel DC Cord, L-L Cable (short) x 5, L-L Cable (long) x 3

BCB-30 Pedal Board



*Compact pedals are not included.

- Holds up to three BOSS compact pedals
- Comes with audio cables for connection between pedals
- Comes with parallel DC cord to power three compact pedals (with optional AC adaptor: PSA-series)
- Dimensions 330 (W) x 300 (D) x 81 (H) mm (13" x 3-3/16" x 11-13/16")
- Weight 1.2 kg/2 lbs 11 oz
- Accessory 4-pin Parallel DC Cord, L-L Cable (130 mm) x 2
- Option AC Adaptor (PSA series)



IBA-BR80S Silicone Case/Pouch Set for BR-80



*BR-80 is not included.

- Made of soft silicone rubber, this case guards against dirt and scratches, and keeps the MICRO BR BR-80 from slipping on smooth surfaces
- Custom pouch is also cushion-lined to absorb impact

IFS-6 Dual Footswitch



- Combines latch- and momentary-type switching into one unit
- Each footswitch can be assigned latch- or momentary-type
- Can be connected to other footswitches (FS-5L/FS-5U/FS-6/AB-2) for extension

IAB-2 2-way Selector



- Affordable A/B selector with 1-click operation and silent switching
- 2-way selector for using A/B input with one output, or vice-versa
- Instantly change guitars, effects setups or amplifiers, or switch between an amp and tuner

IFS-5U Footswitch



- A metal-cased momentary "unlatch"-type footswitch
- Can be connected using an ordinary guitar cable

IFS-5L Footswitch



- A metal-cased latch-type footswitch with a LED to indicate status
- Can be connected with a standard guitar cable

IEV-5 Expression Pedal Roland



- Can be used to control a range of functions and effects parameters in real time
- Compact, travel-friendly body fits perfectly onto guitar pedalboards

IDI-1 Direct Box



- High-quality direct box with crystal-clear sound for transforming high-impedance, unbalanced instrument outputs to the low-impedance, balanced inputs of a mixing console

- Frequency Response 20 Hz to 40 kHz (+0.5/-1 dB)
- Nominal Input Level -20/0/+20 dBu (selectable)
- Max. Input Level +45 dBu (1 kHz), 390 Vp-p
- Max. Output Level +8 dBu (Balanced: 600 Ω load, Unbalanced: 50 kΩ)
- Residual Noise -110 dBu or less (IHF-A)
- Total Harmonic Distortion 0.05 % or less
- Current Draw 6 mA
- Power Supply DC 9 V; Dry Battery <6FZ2/6LR61 type>; Phantom Power 24 V to 48 V DC
- Dimensions 97 (W) x 125 (D) x 46 (H) mm (3-13/16" x 4-15/16" x 1-13/16")
- Weight 480 g/1 lb 1 oz

IRH-300 Stereo Headphones Roland



- Roland's top-of-the-line headphones for the ultimate in sound quality
- Newly developed driver provides ultra-wide frequency range
- Snug fit shuts out external sound

PCS-20A 8-pin Parallel DC Cable Roland



IMSC-50/25/15 MIDI Cables Roland

● 5.0/2.5/1.5 m

IPCS-31L Audio Cable Roland

● Stereo 1/4" ↔ 2 x 1/4"; 2.2 m

IPSA-series AC Adaptor Roland

