

33087/\*\*/16



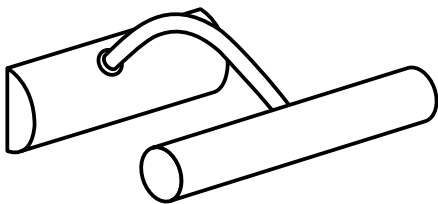
Gebruiksaanwijzing

Notice d'emploi

Benutzerhandbuch

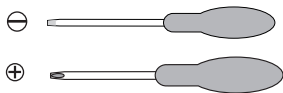
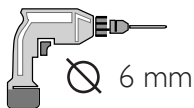
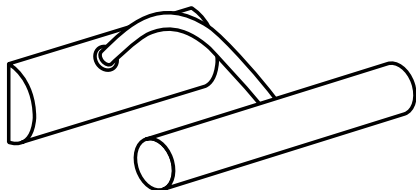
User manual

Manual de usuario

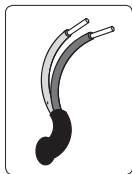
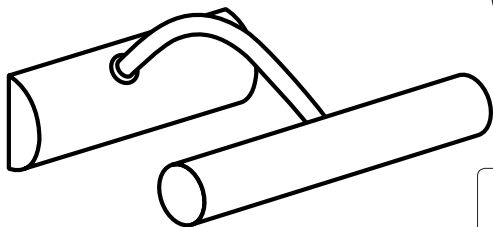


# PHILIPS

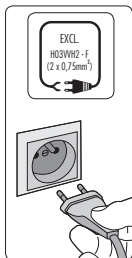
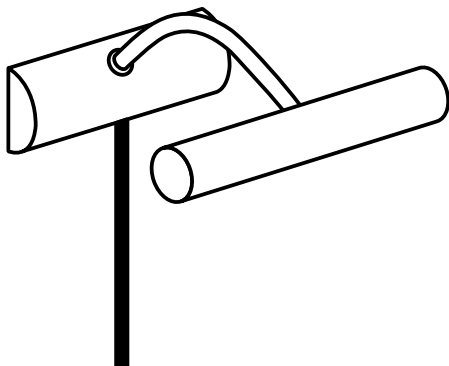
Incl.



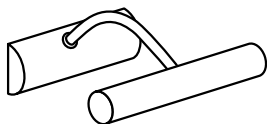
Type 1 p.4



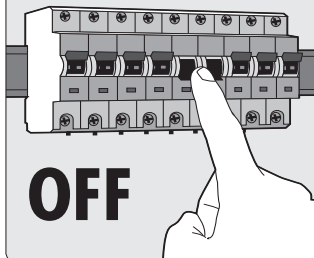
Type 2 p.6



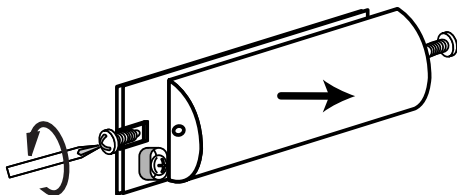
Type 1



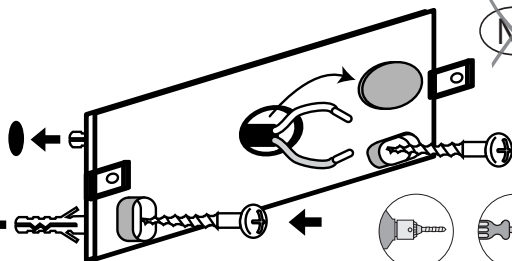
①

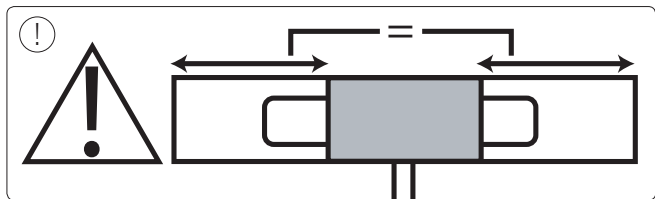
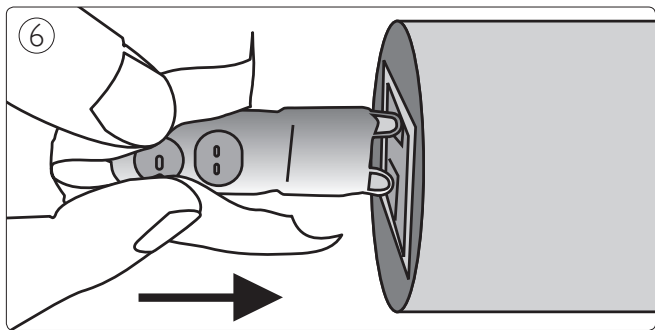
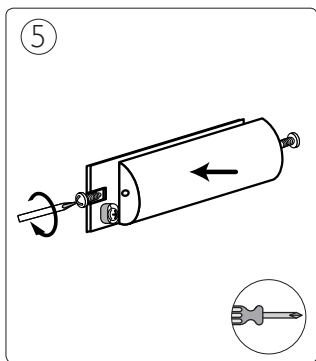
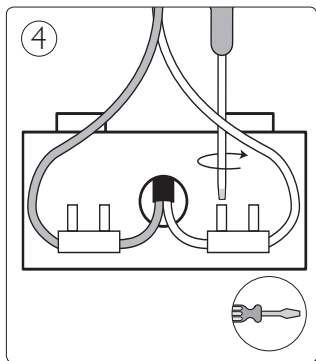


②

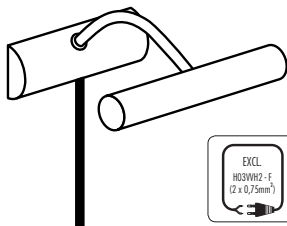


③

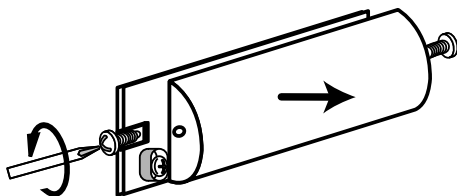




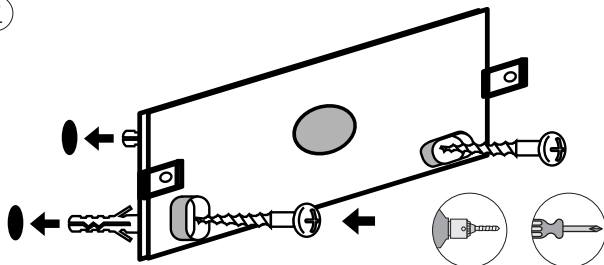
## Type 2

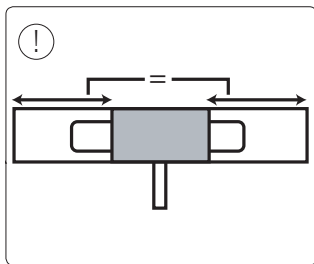
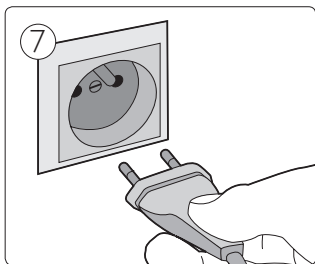
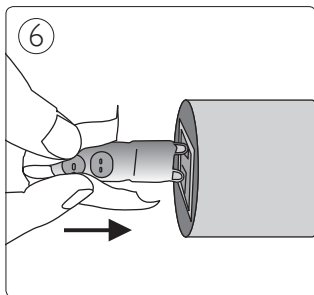
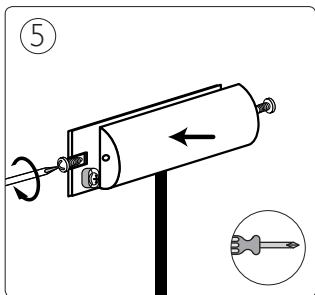
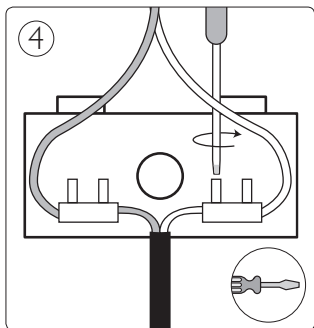
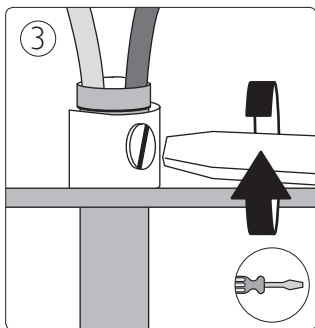


①



②







Philips Lighting Contact Centre  
Int. Business Reply Service  
I.B.R.S. / C.C.R.I. Numéro 10461  
5600 VB Eindhoven  
Pays-Bas / The Netherlands

[www.philips.com/homelighting](http://www.philips.com/homelighting)  
 +800 7445 4775

4404.018.36781  
Last update: 08/11/12