



Philips DryCare Advanced
Dryer

ThermoBalance sensor

Ionic
2200W



BHD184/00



Active heat protection, for more shine

Continuous change of hot and cold airflow provides a pleasant sensation for hair and scalp. Up to 22% more shine for the ThermoBalance setting compared with the highest setting of the product.

ThermoBalance Sensor

- ThermoBalance provides active temperature protection

Beautifully styled hair

- 2200W of fast, high performance drying power
- Cool Shot sets your style
- 3 heat and 2 speed settings for full control
- Slim airflow concentrator for a perfect brushing
- Massaging diffuser to maximize volume & boosts curls
- Turbo boost for extra fast drying

Less hair damage

- Ionic conditioning for shiny, frizz-free hair

Easy to use

- Easy storage hook for convenient storage
- 1.8m cord for maximum flexibility

PHILIPS

Highlights

ThermoBalance Sensor



ThermoBalance is an innovative Philips technology that provides smart and superior protection to your hair. The sensor diagnoses continuously the heat of air and constantly adjusts temperature for fast and healthy drying. When ThermoBalance Sensor is activated, the LED is on. You may then feel a pleasant and constant temperature changes, preventing the formation of damaging hotspots on your hair. Your hair and scalp are actively and constantly protected from over heating.

2200W of power



This 2200W professional hairdryer creates a powerful airflow. The resulting combination of power and speed makes drying and styling your hair quicker and easier.

Cool Shot sets your style



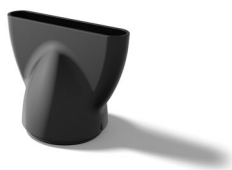
A must-have professional setting, the Cool Shot provides a burst of cold air. Use after styling to set and finish your style.

Accurate control



Easily set and control the heat and speed settings to create the perfect style. Choose from 3 heat and 2 speed settings for full control and precise drying and styling

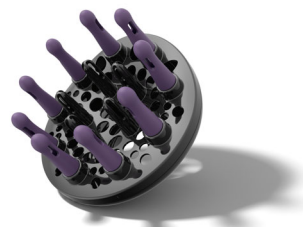
11mm narrow concentrator



The slim styling nozzle concentrate the flow of hair through the 11mm opening for precision

styling on specific areas. Great for touch ups or to set your style.

Massaging diffuser



The asymmetric massaging diffuser has a unique asymmetric design that is contoured to the head, making it easier and more intuitive to use. The diffuser spreads the flow of air across the hair, drying hair more healthy, boosting volume and reducing frizz. The rubber pins can be used to massage and stimulate the scalp and improve hair vitality. For best results, hold close to the crown and root area and let the diffuser's massaging pins add bounce and shape curls.

Turbo boost



The turbo boost button increases the airflow, to dry your hair even quicker.

Specifications

Features

- Ceramic coating: No
- Cool Shot
- Diffuser
- Dual voltage: No
- Foldable handle: No
- Hanging loop
- Ion conditioning
- Nozzle / Concentrator
- Number of attachments: 2
- Travel Pouch included: No

Service

- 2-year guarantee

Technical specifications

- Cord length: 1.8 m
- Frequency: 50-60 Hz
- Motor: DC Motor
- Power: 2200 W
- Voltage: 220-240 V
- Wattage: 2200 W



Issue date 2016-07-01

Version: 1.3.1

© 2016 Koninklijke Philips N.V.
All Rights reserved.

Specifications are subject to change without notice.
Trademarks are the property of Koninklijke Philips N.V.
or their respective owners.

www.philips.com