



PERFORMANCE

PRECISE APPLICATION,
non-drip and stays attached to the hair perfectly

RICH CONDITIONING TEXTURE,
for a maximum cosmetic effect of the hair

FRESH AND FLORAL FRAGRANCE,
for absolute comfort during the application

PERFECT FUSION BETWEEN ALL THE SHADES,
with their soft consistency in a gel-cream

CAN BE USED IN 3 DIFFERENT WAYS:

ON **BLEACHED HAIR** FOR A **MORE INTENSE RESULT**

ON **NATURAL HAIR** TO GIVE **NEW COLOR**

ON **COLORED HAIR** TO **REVIVE THE HIGHLIGHTS**



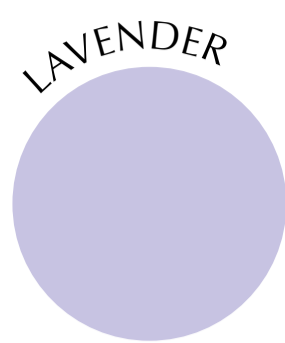
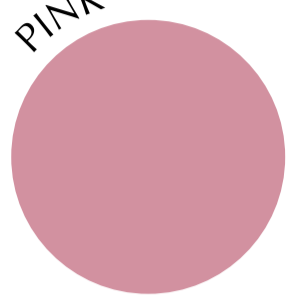
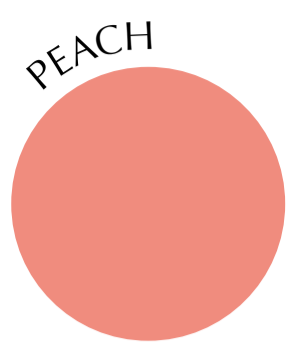
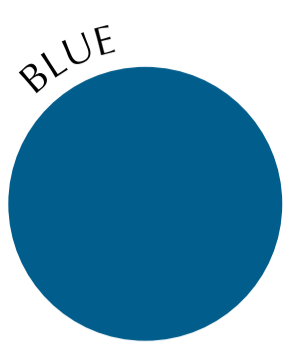
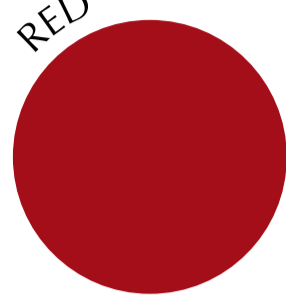
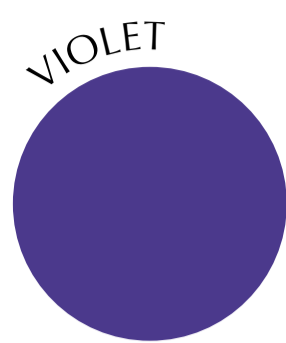
ALFAPARF
GROUP
Via C. Cantù, 1 - 20123 Milano (Italy)
Made in Italy - BEAUTY & BUSINESS SPA

Yellow



CHROMATIC
EXPLOSION
DIRECT COLORING CRAZY SHADES

CHROMATIC EXPLOSION



Mix & Create:
minimum 5:1
(5 parts of Clear
and 1 part of color)

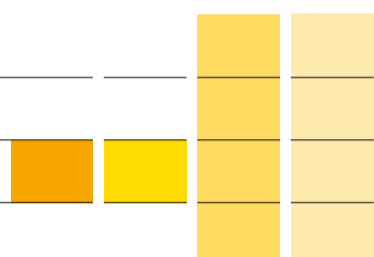
VIBRANTS

PASTELS

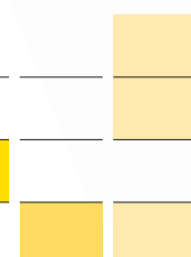
CLEAR

MELANIN
RESIDUE
IDEAL FOR
APPLICATION

VIOLET
BLUE
RED
GREEN



PEACH
LAVENDER
PINK
MINT



STARTING BASE

Medium Brown

PRODUCTS USED FOR THE TECHNICAL SERVICE

Ye Color Permanent

2 Natural Brown
4.65 Medium Mahogany Red Brown
5.3 Light Golden Brown
5.32 Light Golden Violet Brown

Ye Color Chromatic Explosion

Blue

Ye Color Bleaching Powder

Ye Color Peroxido
10 volume, 20 volume, 30 volume

FORMULAS USED

- Formula 1:**
40 g of 2 Natural + 40 g of 5.3 mixed with 120 g of Peroxido 10 volume
- Formula 2:**
30 g of Bleaching Powder mixed with 60 g of Peroxido 30 volume
- Formula 3:**
30 g of 4.65 + 30 g of 5.32 mixed with 90 g of Peroxido 20 volume
- Formula 4:**
20 g Blue



VIBRANTS

1

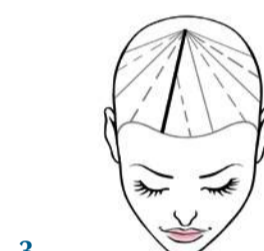
Apply Formula 1 at the roots and work the color to 3 cm over the lengths.



2

Once applied to the roots, while processing divide the hair creating 5 triangular sections originating in the fulcrum and stretching from the front hairline.

Use the natural parting as an initial reference.



3

Identify a point half way along the natural parting.

Create a triangle with its vertex at the point identified and the hairline as a base.

The side of the triangle must be parallel to the side of the section. Divide the other sections in half, creating sub-sections.



4

Isolate triangles with a base of 1 cm on the dividing lines you have just created.

The vertex must be oriented according to natural fall of the hair.

Apply Formula 2 on the lengths and ends of the selected strands.



5

Working on the same sub-sections, apply Formula 1 on the remaining lengths and ends.

Repeat in the rear section.
Process for 35 minutes.



6

Apply Formula 3 on the remaining sub-sections.



7

Once processing time is complete rinse the color mixture first, and then the bleaching mixture.

Apply Formula 4 on the lengths and ends of the triangles lightened beforehand.

Process for 10-20 minutes, then rinse.

STARTING BASE

Medium Blonde

PRODUCTS USED FOR THE TECHNICAL SERVICE

Ye Color Permanent

9.13 Very Light Golden Ash Blonde
7.13 Medium Ash Golden Blonde
6.32 Dark Golden Violet Blonde

Ye Color Chromatic Explosion

Pink
Lavender

Ye New Color Bleaching Powder

Ye Color Peroxido
10 volume, 20 volume, 30 volume

FORMULAS USED

- Formula 1:**
40 g of 7.13 mixed with 60 g of Peroxido 20 volume
- Formula 2:**
40 g of 9.13 mixed with 60 g of Peroxido 30 volume
- Formula 3:**
30 g of Bleaching Powder mixed with 60 g of Peroxido 20 volume
- Formula 4:**
10 g of 6.32 mixed with 15 g of Peroxido 10 volume
- Formula 5:**
15 g Pink
- Formula 6:**
15 g Lavender



PASTELS

1

Apply Formula 1 at the roots and work the color to 3 cm over the lengths.



2

Isolate a section in the shape of a seed on the top of the head and apply Formula 2 on the lengths and ends.



3

Create divisions concentric with the previous one.

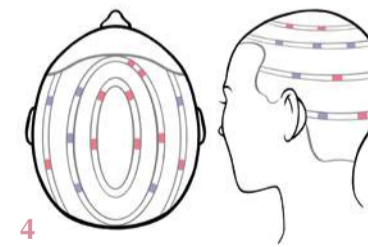
Alternate sections of 1 cm with sections of about 3 cm.

Apply Formula 3 in the 1cm sections.

In the other sections, starting from the top, apply: Formula 1, Formula 2, Formula 2, Formula 4.

Process for 40 minutes.

Rinse the color mixture first and then the bleaching mixture



4

Select sub-sections of about 1cm in the bleached sections and apply Formula 4 and Formula 5 on the lengths and ends as shown in the diagram.

Process for 10-20 minutes Rinse.