



FIND THE COMPLETE MANUAL,
INSTALLATION AND SETTING VIDEOS
UNDER: WWW.SIGMA-GR.COM/ROX10

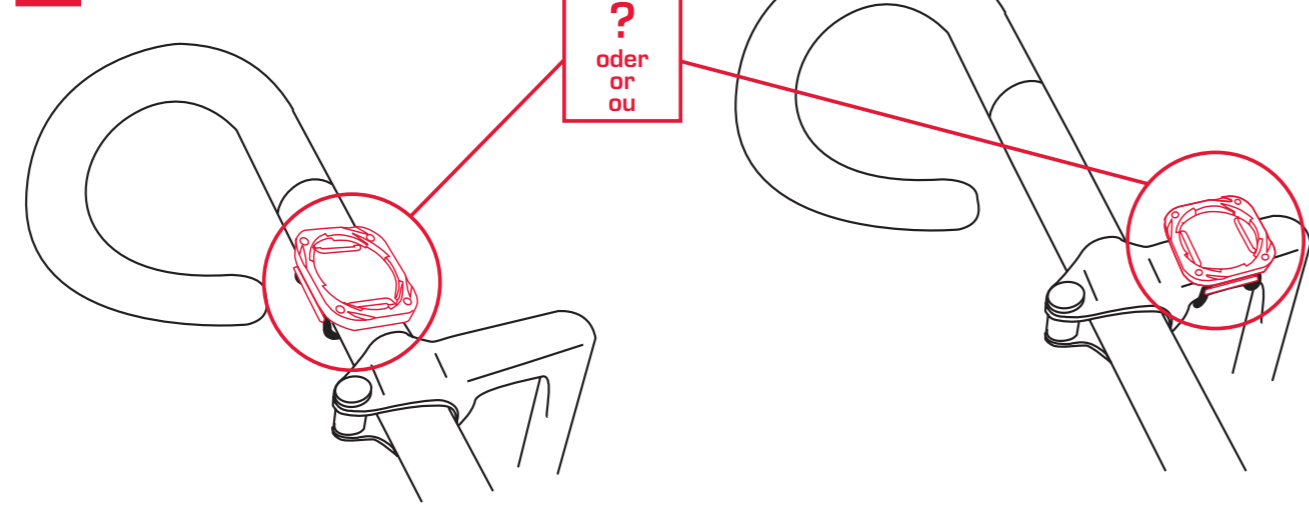
ROX 10.0 GPS

INSTALLATION ON THE BIKE

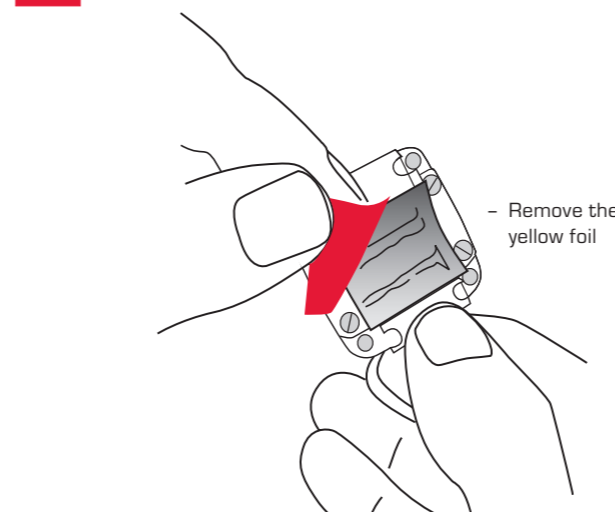
ROX 10.0 GPS INSTALLATION ON THE BIKE

1. INSTALLATION OF THE BRACKET

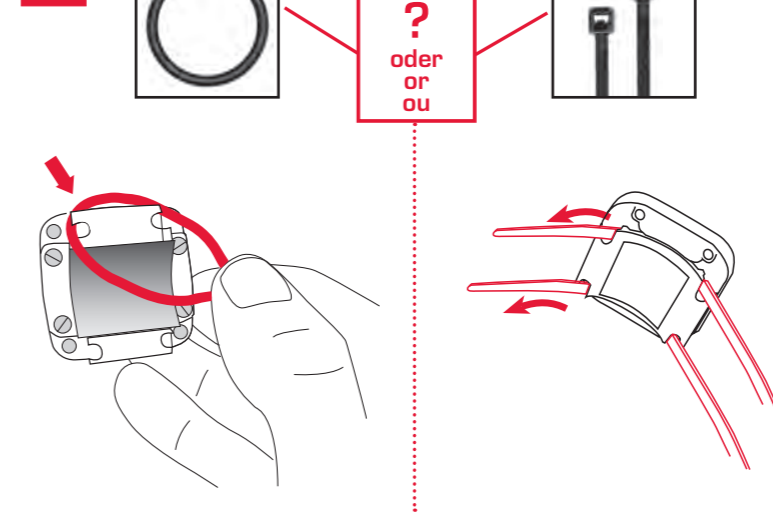
1.1 STEM OR HANDLEBAR?



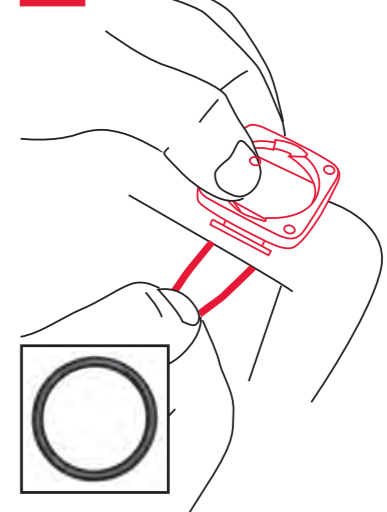
1.2 INSTALLATION OF THE BRACKET



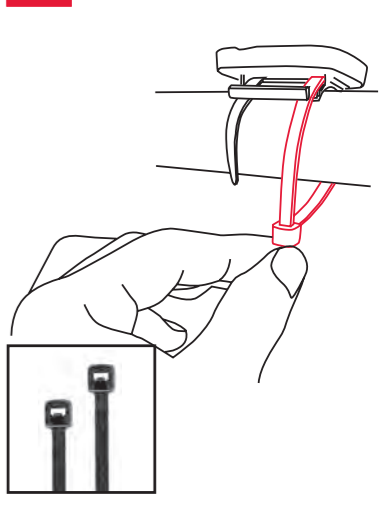
1.3



1.4 A

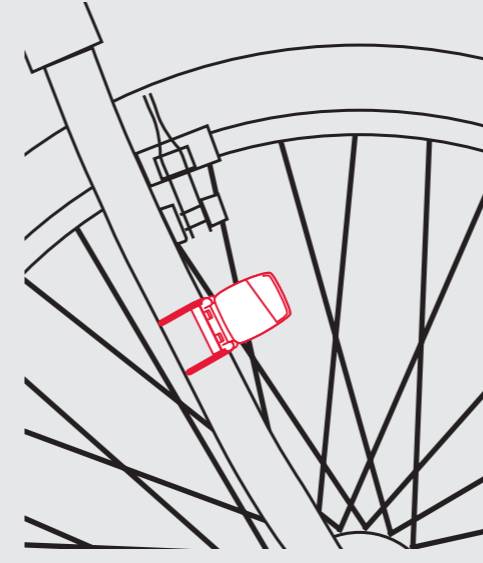
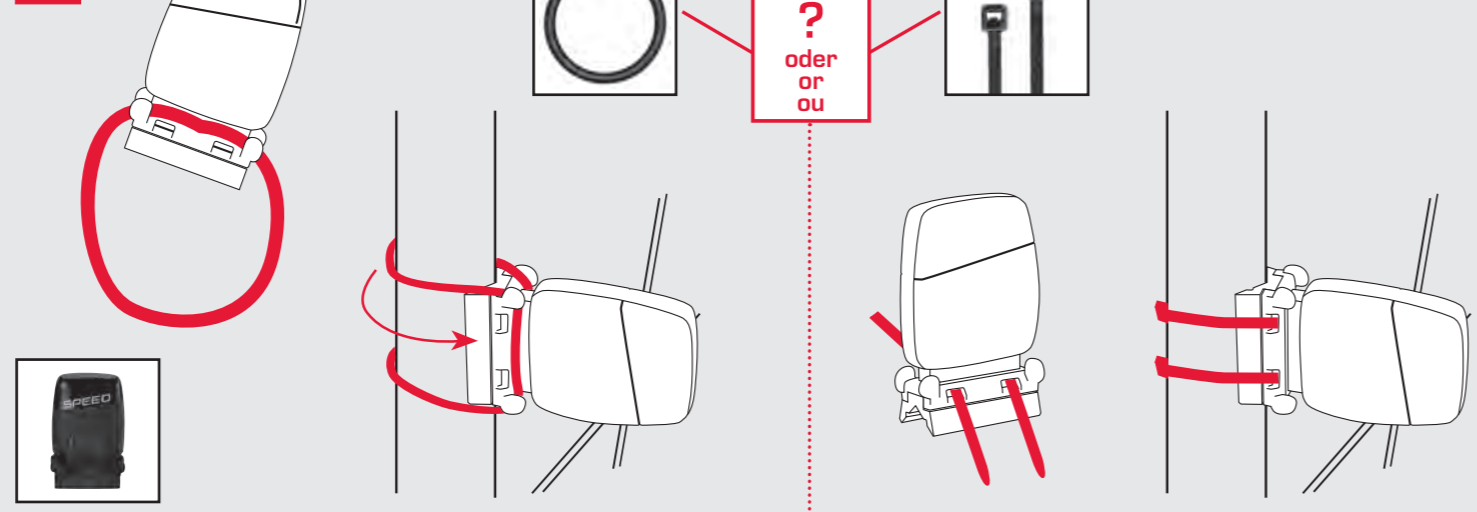


1.4 B

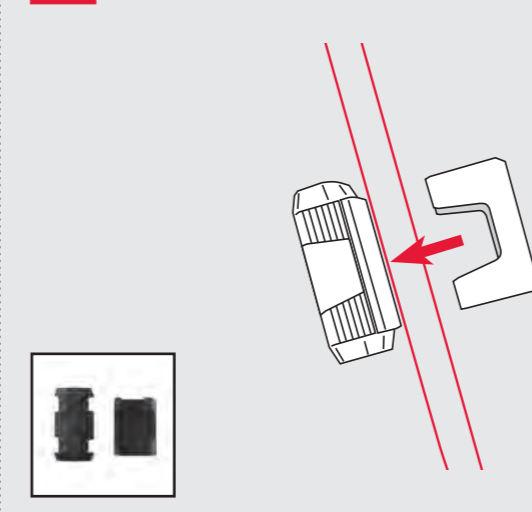


2. INSTALLATION OF THE WIRELESS SPEED TRANSMITTER

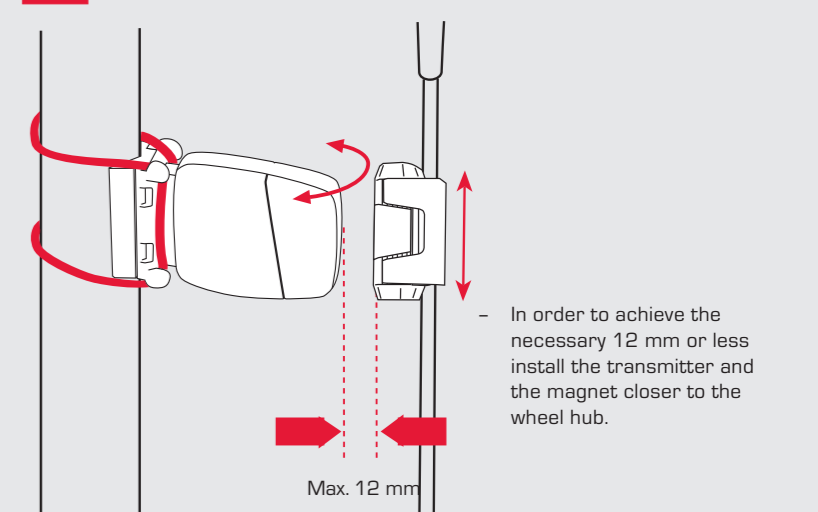
2.1



2.2 INSTALLATION OF THE POWER MAGNET

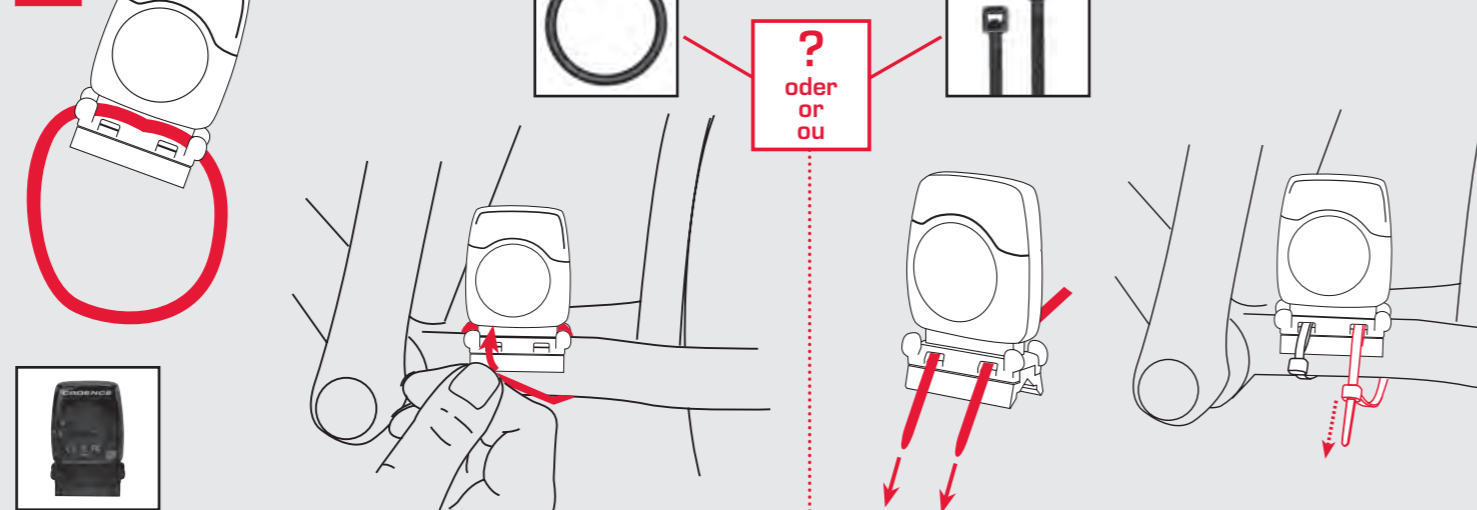


2.3 ADJUSTING OF POWER MAGNET

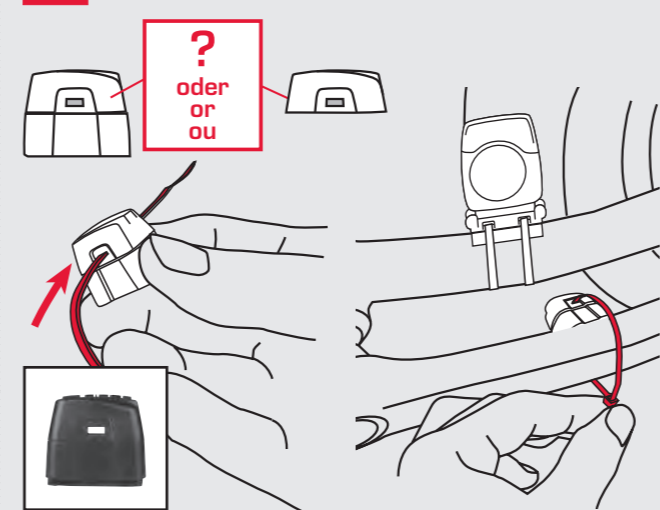


3. INSTALLATION OF THE WIRELESS CADENCE TRANSMITTER

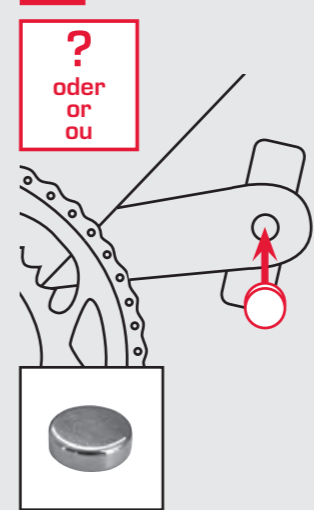
3.1



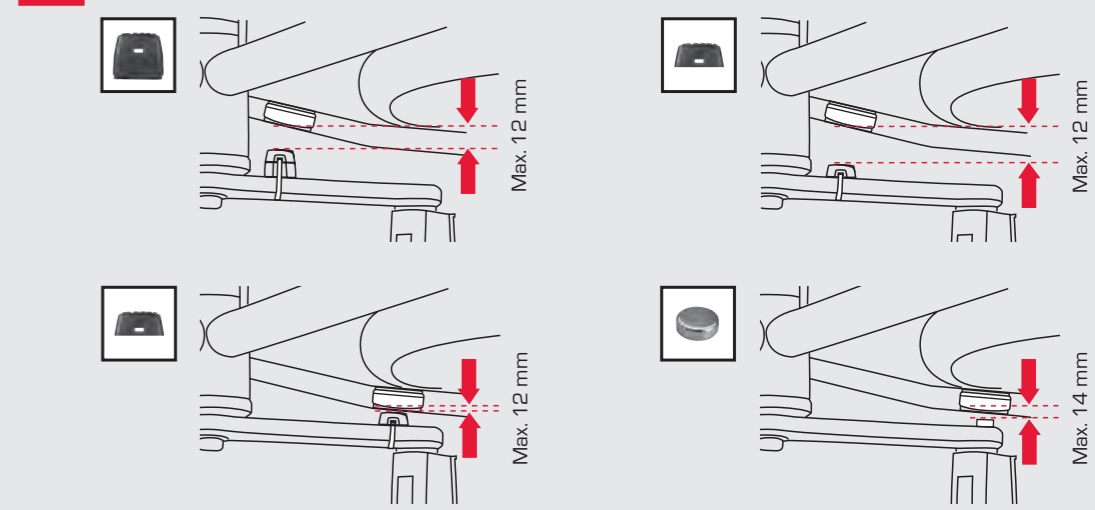
3.2 A INSTALLATION OF THE CADANCE MAGNET



3.2 B



3.3 ADJUSTING OF POWER MAGNET



081000/1



SIGMA SPORT USA
3487 Swenson Ave.
St. Charles, IL 60174, U.S.A.

SIGMA SPORT ASIA
4F, No. 192, Zhonggong 2nd Rd.,
Xitun Dist., Taichung City 407, Taiwan

SIGMA-ELEKTRO GmbH
Dr.-Julius-Leber-Strabe 15
D-67433 Neustadt/Weinstraße

This Class digital apparatus complies with Canadian ICES-003.

operation of the device.

(2) This device must accept any interference, including interference that may cause undesired

and

(1) This device may not cause interference.

Operation is subject to the following two conditions:

This device complies with Industry Canada licence-exempt RSS standard(s).

Changes or modifications not expressly approved by the party responsible for compliance could

void the user's authority to operate the equipment.

- Consult the dealer or an experienced radio/TV technician for help.

- The equipment must be installed in accordance with the manufacturer's instructions.

- Increase the separation between the equipment and receiver.

- Reorient or relocate the receiving antenna.

- If the interference persists, turn the equipment off and on, the user is encouraged to try to correct

the interference by one or more of the following measures:

NOTE: This equipment has been tested and found to comply with the limits for a Class B digital

protection against harmful interference in a residential installation. This equipment generates,

uses and can radiate radio frequency energy and, if not installed and used in accordance with

the instructions, may cause harmful interference to radio communications.

However, there is no guarantee that interference will not occur in a particular installation.

If this equipment does cause harmful interference to radio or television reception, which can

be determined by turning the equipment off and on, the user is encouraged to try to correct

the interference by one or more of the following measures:

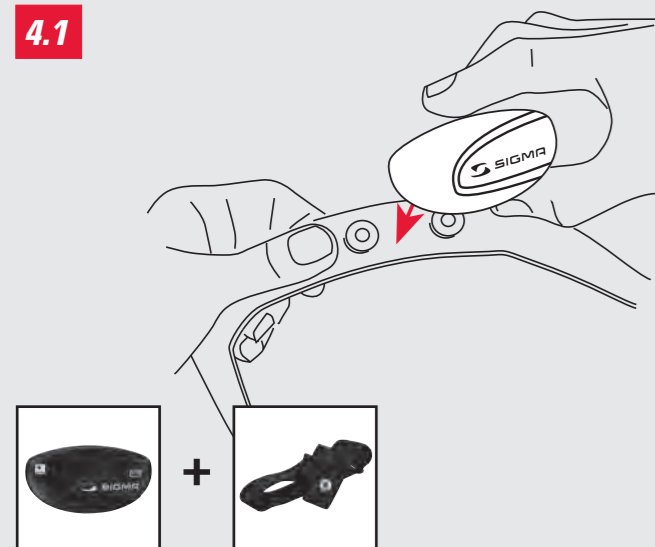
- Reorient or relocate the receiving antenna.

- Increase the separation between the equipment and receiver.

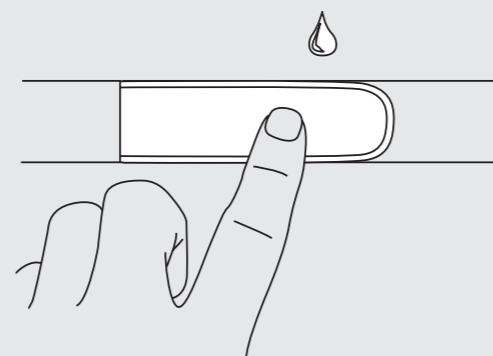
- Consult the dealer or an experienced radio/TV technician for help.

FCC STATEMENT

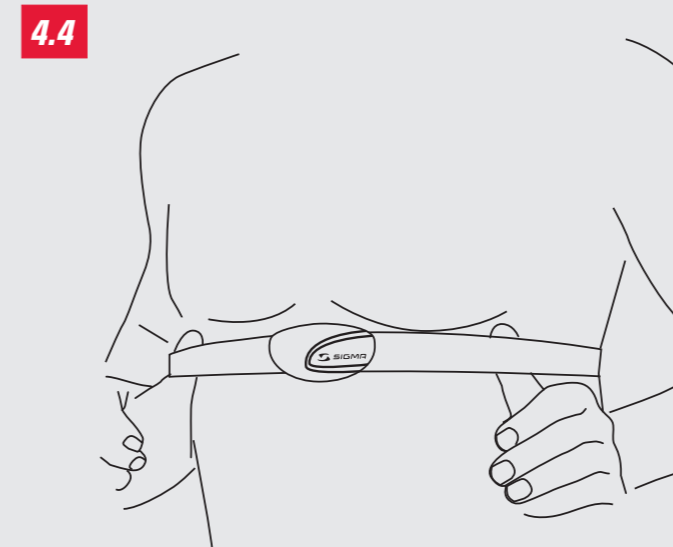
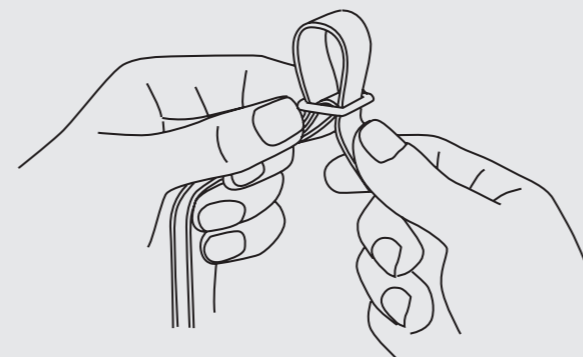
4. ATTACHING THE WIRELESS HEART RATE TRANSMITTER



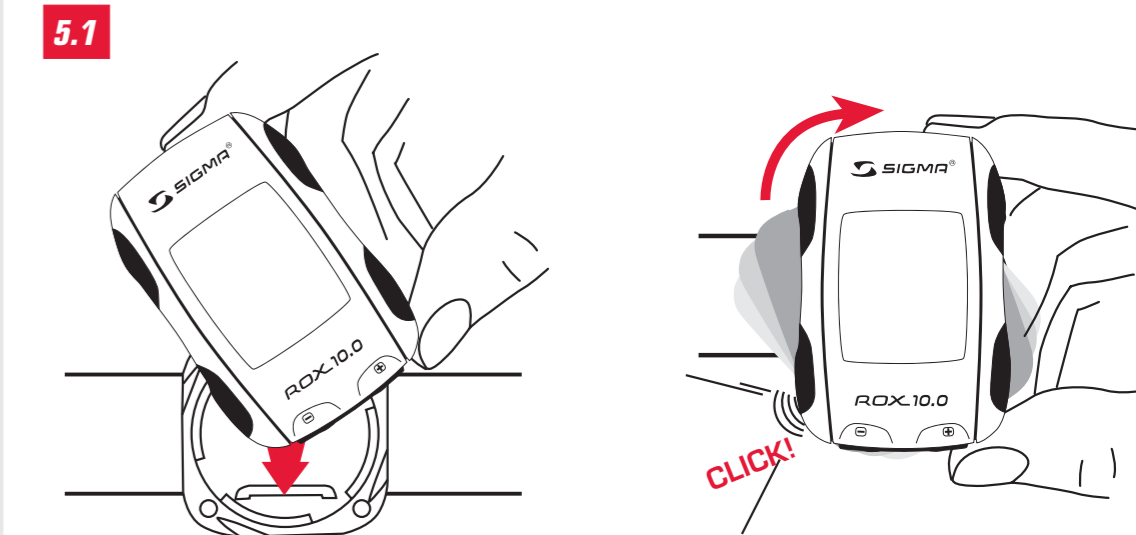
4.2 RUB WATER OR CARDIO-GEL ON THE ELECTRODES



4.3 ADJUSTING THE CHEST STRAP

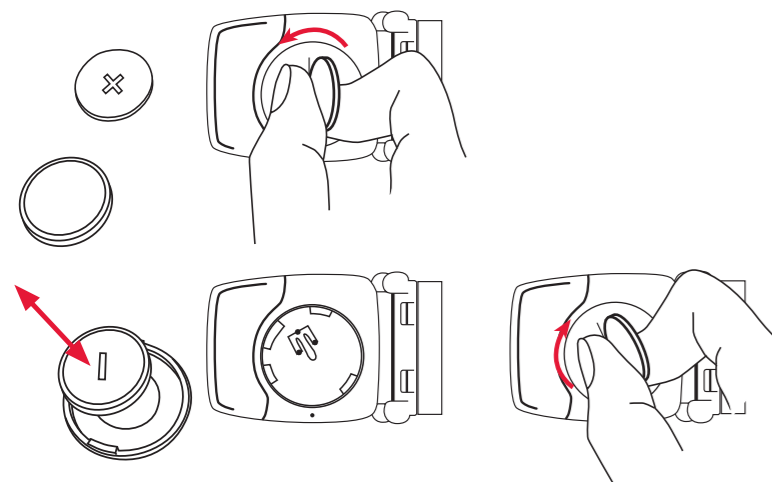


5. INSTALLING THE SIGMA ROX TO THE BRACKET

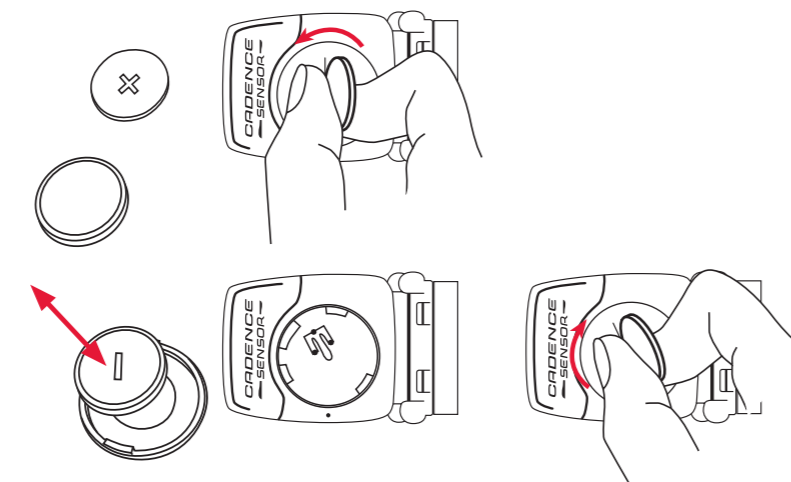


6. BATTERY CHANGE / LOAD

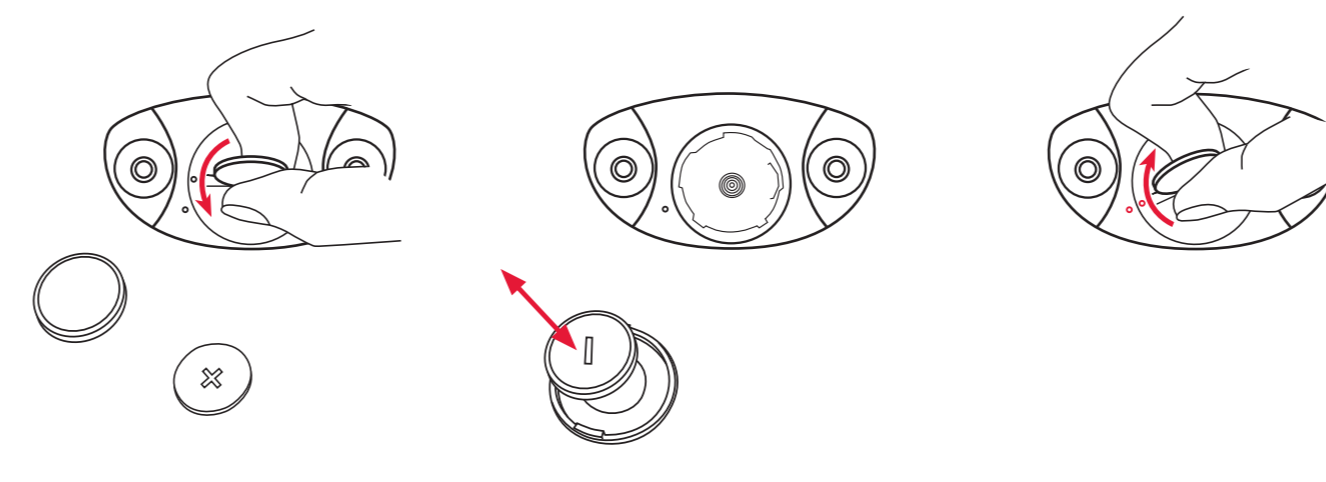
6.1 CHANGE BATTERY / SPEED TRANSMITTER (BATTERY TYPE CR 2032)



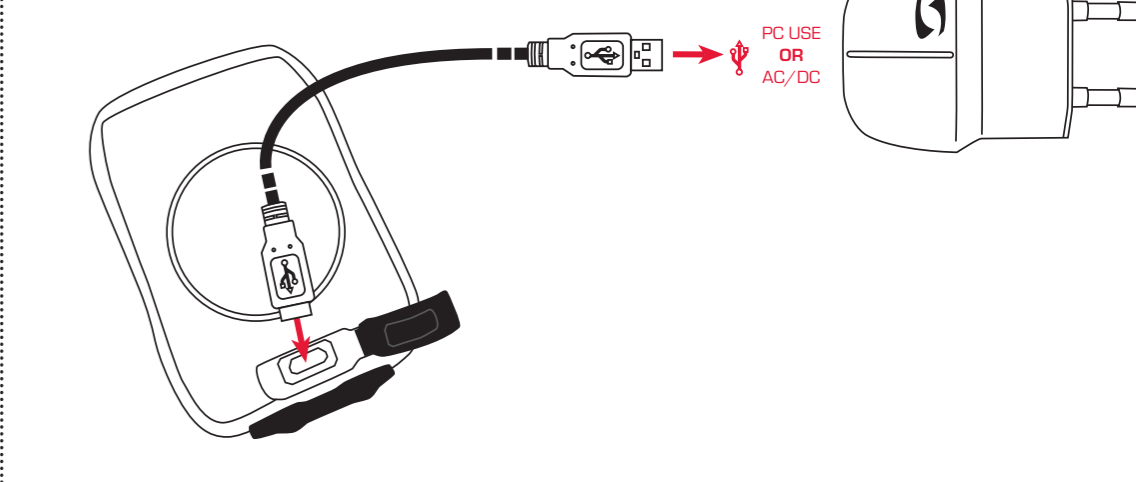
6.2 CHANGE BATTERY / CADENCE TRANSMITTER (BATTERY TYPE CR 2032)



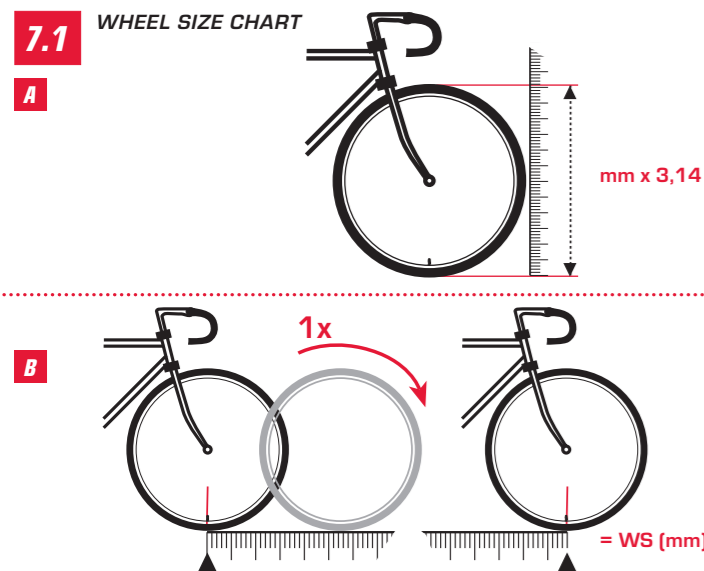
6.3 CHANGE BATTERY / HEARTRATE TRANSMITTER (BATTERY TYPE CR 2032)



6.4 LOAD BATTERY / ROX 10.0 GPS



7. WHEEL SIZE CHART



km/h:
WS = mm x 3,14

mph:
WS = mm x 3,14

km/h:
WS = mm

mph:
WS = mm

ETRTO		kmh mph
16 x 1.75 x 2		
47-305	16 x 1.90	1272
47-406	20 x 1.75	1580
37-540	24 x 1 3/8	1948
47-507	24 x 1.75	1900
37-584	26 x 1 3/8, 650 STD	2086
37-590	26 x 1 3/8, 650 x 35A	2100
40-559	26 x 1.50	2030
42-559	26 x 1.60	2025
47-559	26 x 1.75	2050
50-559	26 x 2.00	2075
54-559	26 x 2.10	2100
57-559	26 x 2.25	2120
57-584	27 1/2 x 2.25	2128

ETRTO		kmh mph
16 x 1.75 x 2		
28-630	27 x 1 1/4	2174
32-630	27 x 1 1/4	2220
40-635	28 x 1 1/2	2265
32-622	28 x 1.25, 700 x 32C	2170
35-622	28 x 1.35, 700 x 35C	2185
37-622	28 x 1.40, 700 x 35C	2200
37-622	28 x 1.40, 700 x 37C	2200
40-622	28 x 1.50, 700 x 38C	2220
42-622	28 x 1.60, 700 x 40C	2230
47-622	28 x 1.75	2250
50-622	29 x 2.00	2280
54-622	29 x 2.10	2295
57-622	29 x 2.25	2288
60-622	29 x 2.35	2330

ETRTO		kmh mph
16 x 1.75 x 2		
23-571	650 x 23C	1973
18-622	700 x 18C	2102
20-622	700 x 20C	2100
23-622	700 x 23C	2125
25-622	700 x 25C	2135
28-622	700 x 28C	2150

8. FIRST WAKE UP

- 8.1 FIRST WAKE UP
- Installation of the bracket and sensors
 - Wake up ROX 10.0 GPS
 - Press the key **ENTER** for 5 seconds. Press **ENTER** to change your language.
 - Select your language with the keys **▲** / **▼** and press **ENTER**.
 - Press the key **BACK** twice to return to the Main Menu.
 - Download the instruction manual from www.sigmasport.com or load it from the cd rom.
 - Pairing the sensors with the ROX 10.0 GPS.
 - Before using the transmitter, they have to be paired with the ROX 10.0 GPS.
 - To pair a sensor, it must be activated. (Use the magnet at ANT+ Speed sensor and ANT+ Cadence sensor). Please navigate to Settings → Bike 1-3+Totals → Bike 1 → ANT+ Pairing. Use the function keys **▲** / **▼** to select the appropriate sensor for the pairing and start the pairing with the **ENTER** key.
 - For a few moments „Search“ will be displayed, then the ID of the transmitter appears. The pairing process is complete and the sensor can be used in training. Go back to the main menu to enter the training mode.
 - Start training
- Note: Load completely before you start using this device.